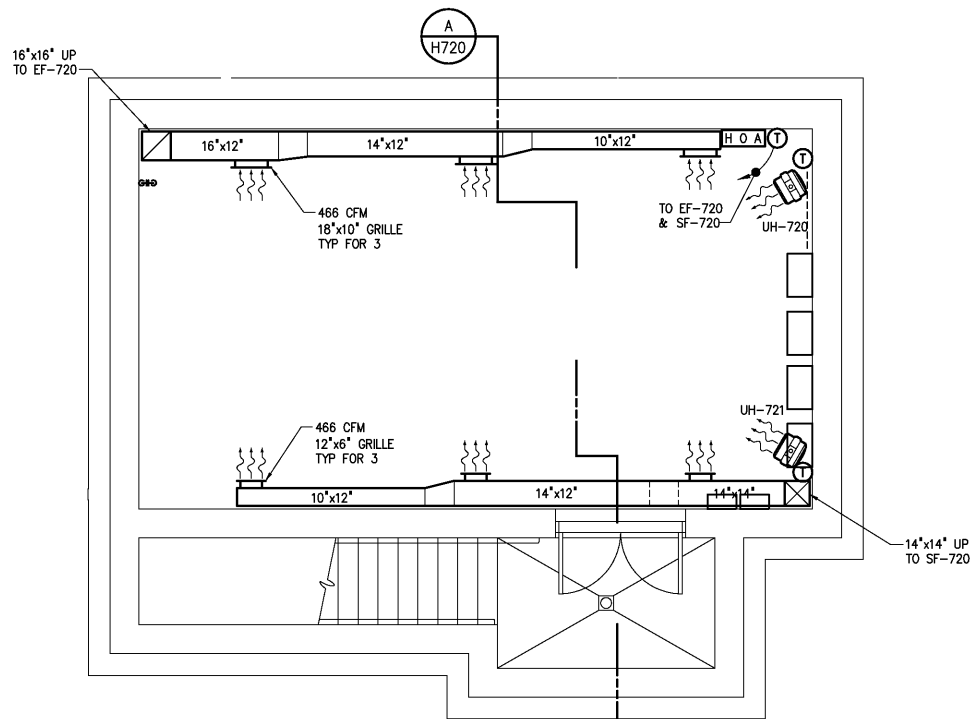
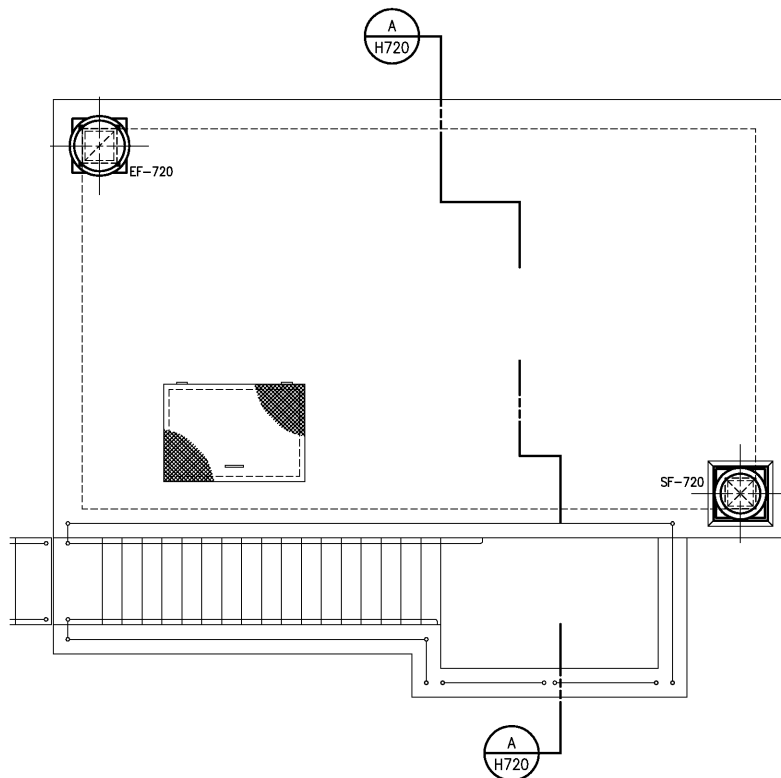
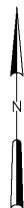


SECTION A  
1/4"=1'-0" H720



BOTTOM PLAN  
1/4"=1'-0"



TOP PLAN  
1/4"=1'-0"

NOTES:

- 1 EXHAUST GRILLES SHALL BE METAL-AIRE MODEL RHD WITH OPPOSED BLADE DAMPERS.
- 2 SUPPLY GRILLES SHALL BE METAL-AIRE MODEL H4004D WITH OPPOSED BLADE DAMPERS.
- 3 ALL EXHAUST AND SUPPLY DUCTS ELBOWS SHALL HAVE TURNING VANES.
- 4 DUCTS SHALL BE SECURELY HUNG AND SUPPORTED FROM STRUCTURE WITH STAINLESS STEEL TRAPEZE HANGERS AND STAINLESS STEEL ANCHORS.
- 5 DUCT AND DUCT HARDWARE SHALL BE OF ALUMINUM CONSTRUCTION.

				DESIGNED	H & S
				DRAWN	H & S
				CHECKED	
	RECORD DRAWINGS	MAR 2008	RLT	PROJ. ENGR.	DAN
	CONSTRUCTION	MAR 2004	RLT		
	REGULATORY APPROVAL	NOV 2003	RLT		
	PRELIMINARY DESIGN	NOV 2002	RLT		
NO.	ISSUED FOR	DATE	BY	APPROVED	

THIS DOCUMENT ORIGINALLY ISSUED FOR CONSTRUCTION AND SEALED BY ROBERT S. DIFIORE, SEAL NO. 22769

RECORD DRAWING

THIS DRAWING HAS BEEN MODIFIED TO REFLECT FIELD CHANGES REPORTED BY THE CONTRACTOR OR ANOTHER PARTY, BUT NOT VERIFIED BY THE CERTIFYING ENGINEER. THIS DOCUMENT ORIGINALLY ISSUED AND SEALED BY DAVID A. NAILOR, 025465. THIS MEDIA SHALL NOT BE CONSIDERED A CERTIFIED DOCUMENT.

THIS DOCUMENT ORIGINALLY ISSUED FOR CONSTRUCTION AND SEALED BY RONALD L. TAYLOR, SEAL NO. 024649

**HAZEN AND SAWYER**  
Environmental Engineers & Scientists  
4011 WestChase Blvd, Raleigh, North Carolina 27607

CITY OF ROANOKE  
VIRGINIA

REGIONAL WATER POLLUTION CONTROL PLANT  
WET WEATHER IMPROVEMENTS

THICKENED SLUDGE PUMP STATION  
HVAC  
PLANS AND SECTION

THE SCALE BAR SHOWN BELOW MEASURES ONE INCH LONG ON THE ORIGINAL DRAWING.

DATE JULY 2003

H & S JOB NUMBER 30788A

CONTRACT NUMBER A

DRAWING NUMBER H720