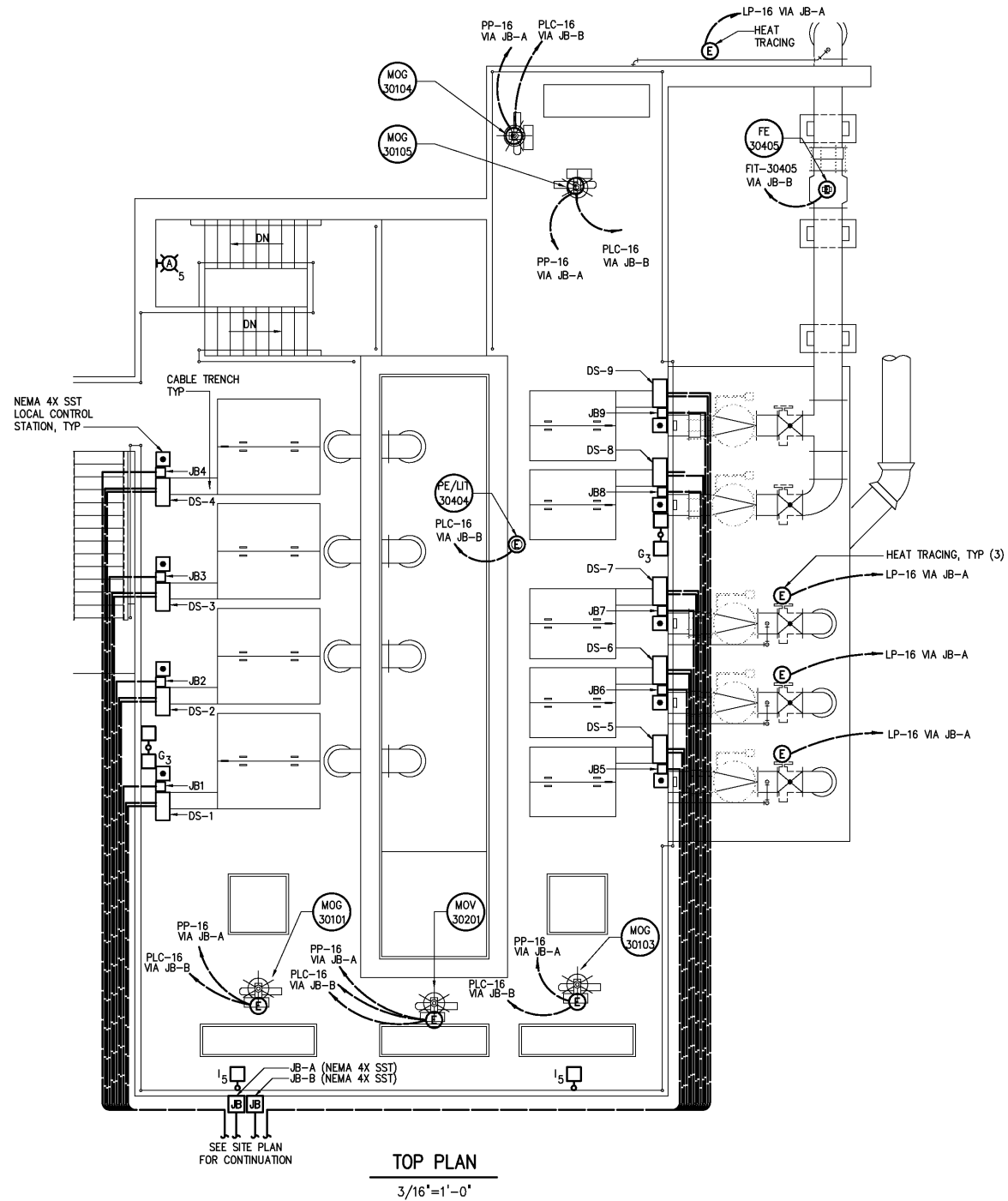
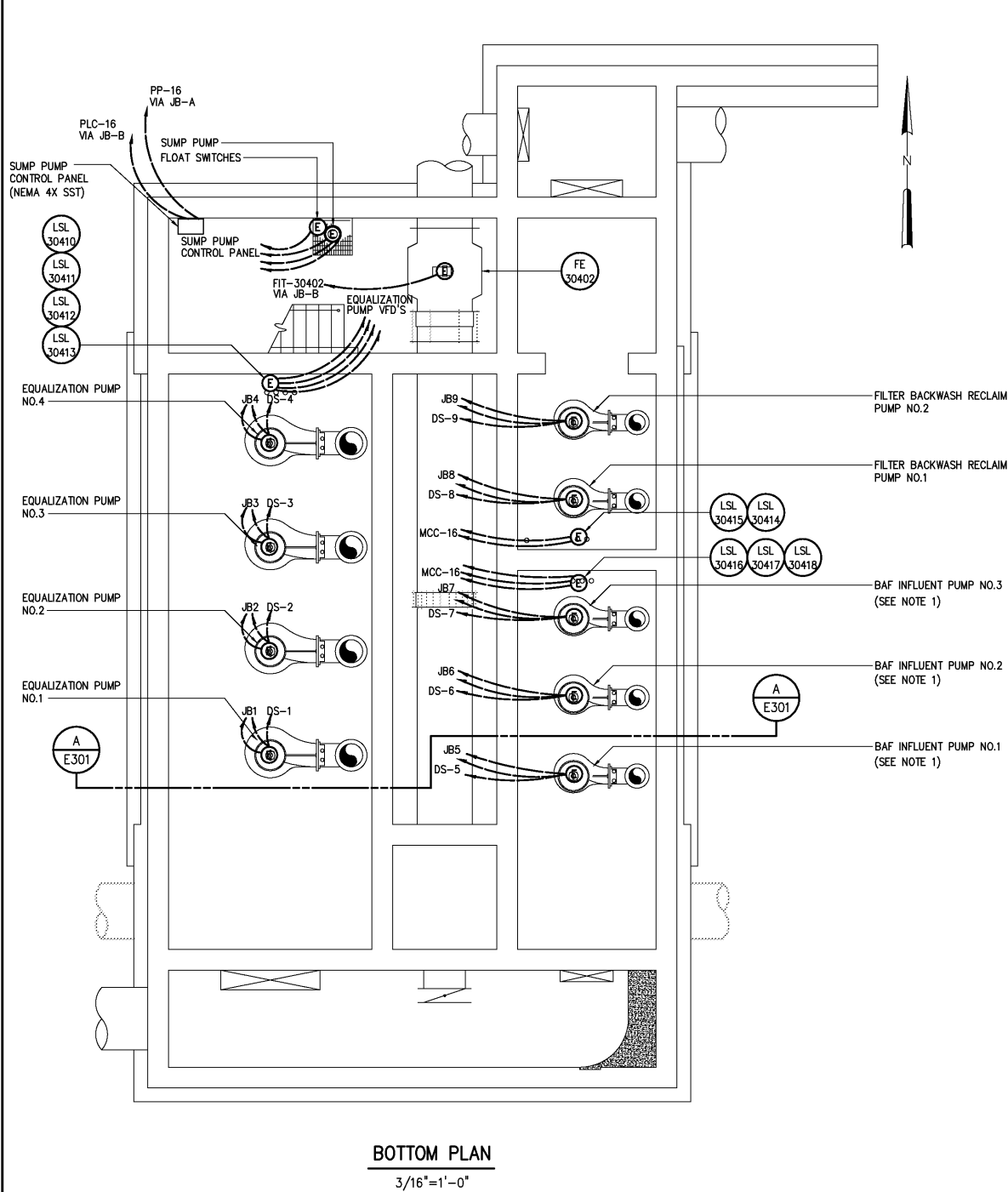


NOTES:

1 THE BAF INFLUENT PUMPS NO.1-NO.3 ARE TO BE RELOCATED FROM THE EXISTING BAF INFLUENT PUMP STATION TO THE NEW BAF/EQ PUMP STATION.



DESIGNED	BRL
DRAWN	BRL
CHECKED	
PROJ. ENGR.	DAN
APPROVED	
NO.	
ISSUED FOR	
DATE	
BY	

THIS DOCUMENT ORIGINALLY ISSUED FOR CONSTRUCTION AND SEALED BY ROBERT S. DIFIORE, SEAL NO. 22769

RECORD DRAWING

THIS DRAWING HAS BEEN MODIFIED TO REFLECT FIELD CHANGES REPORTED BY THE CONTRACTOR OR ANOTHER PARTY, BUT NOT VERIFIED BY THE CERTIFYING ENGINEER. THIS DOCUMENT ORIGINALLY ISSUED AND SEALED BY GERALD J. RATASKY, 026535. THIS MEDIA SHALL NOT BE CONSIDERED A CERTIFIED DOCUMENT.

THIS DOCUMENT ORIGINALLY ISSUED FOR CONSTRUCTION AND SEALED BY RONALD L. TAYLOR, SEAL NO. 024649

HAZEN AND SAWYER
Environmental Engineers & Scientists
4011 WestChase Blvd, Raleigh, North Carolina 27607

CITY OF ROANOKE
VIRGINIA

REGIONAL WATER POLLUTION CONTROL PLANT
WET WEATHER IMPROVEMENTS

BAF/EQ PUMP STATION
ELECTRICAL
PLANS

THE SCALE BAR SHOWN BELOW MEASURES ONE INCH LONG ON THE ORIGINAL DRAWING.	DATE JULY 2003
	H & S JOB NUMBER 30788A
	CONTRACT NUMBER A
	DRAWING NUMBER E300