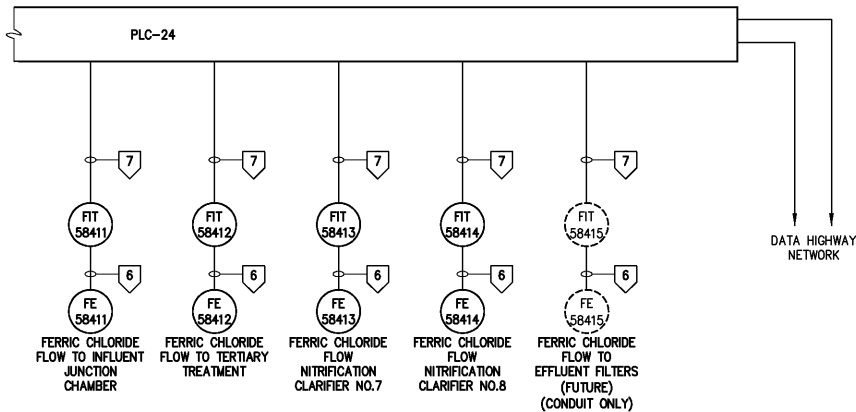
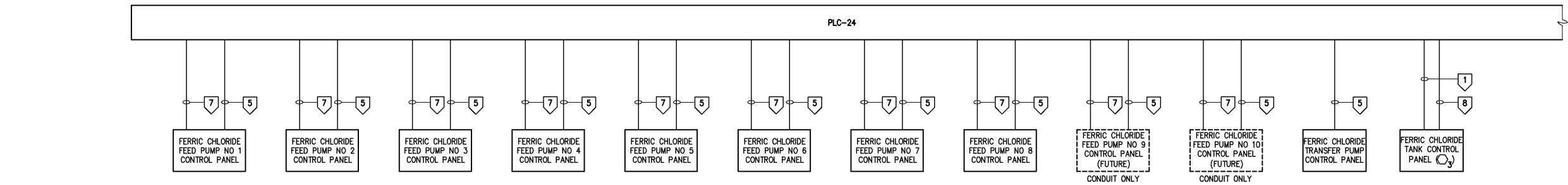


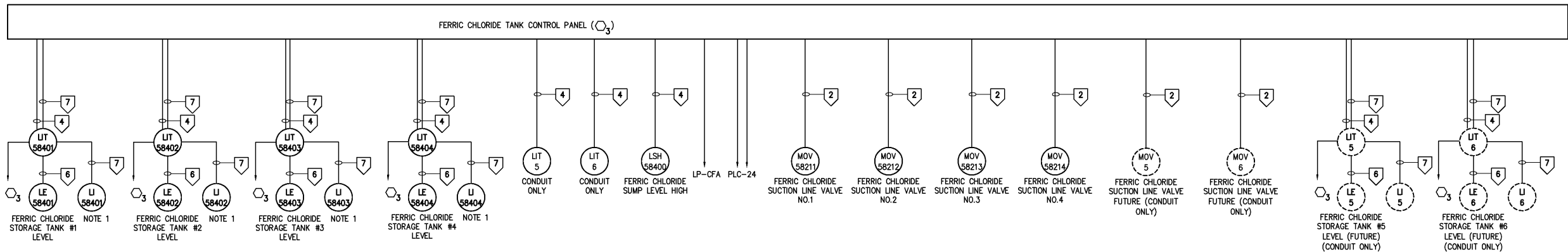
- NOTES:
1. LI-58401-LI-58404 ARE LOCATED IN THE FERRIC CHLORIDE TANK CONTROL PANEL(○₃)



PLC-24 CONTROL ONE LINE DIAGRAM

| CONDUIT AND WIRE LEGEND | |
|-------------------------------------|------------------------|
| (NUMBERS REFERENCE THIS SHEET ONLY) | |
| NO. | DESCRIPTION |
| 1 | 58 #14, #14G, 2°C |
| 2 | 12 #14, #14G, 1°C |
| 3 | NOT USED |
| 4 | 4 #14, #14G, 3/4°C |
| 5 | 10 #14, #14G, 3/4°C |
| 6 | CABLE BY SUPPLIER, 1°C |
| 7 | 2-TPS, 1°C |
| 8 | 8-TPS, 2°C |
| 9 | 3 #10, #12G, 3/4°C |
| 10 | 3 #8, #10G, 1°C |
| 11 | 3 #12, #12G, 3/4°C |

| 480 VOLTS 3ø, 4 WIRE | | PP-CF | | | | | | TYPE: MOUNT: SURFACE | | | | | | | |
|---|------|---------|------|----------------|-------------|-------|-------|-------------------------|-------|-------|----------------|------|------|------|-------------|
| MAIN BKR 225 A 3 P | | | | | | | | | | | | | | | |
| DESCRIPTION | WIRE | CKT BKR | | | VOLT AMPERE | | | VOLT AMPERE | | | CKT BKR | | | WIRE | DESCRIPTION |
| | | TRIP | POLE | NO | #A | #B | #C | #A | #B | #C | NO | POLE | TRIP | | |
| FERRIC CHLORIDE TRANSFER PUMP CONTROL PANEL | 9 | 30 | 3 | 1 3 5 | 3500 | 3500 | | 10000 | 10000 | | 2 4 6 | 3 | 40 | 10 | TX-LP-CFA |
| UH-580 | 11 | 20 | 3 | 7 9 11 | 3333 | 3333 | | 10000 | 10000 | | 8 10 12 | 3 | 40 | 10 | TX-LP-CFB |
| UH-581 | 11 | 20 | 3 | 13 15 17 | 3333 | 3333 | | | | | 14 16 18 | 3 | 20 | 10 | SPARE |
| SPARE | 10 | 20 | 3 | 19 21 23 | | | | | | | 20 22 24 | 3 | 20 | 10 | SPARE |
| SPARE | 10 | 20 | 3 | 25 27 29 | | | | | | | 26 28 30 | 3 | 20 | 10 | SPARE |
| SPARE | 10 | 20 | 3 | 31 33 35 | | | | | | | 32 34 36 | 3 | 20 | 10 | SPARE |
| SPARE | 10 | 20 | 3 | 37 39 41 | | | | | | | 38 40 42 | 3 | 20 | 10 | SPARE |
| NEMA 12 TVSS | | TOTAL | | | 10166 | 10166 | 10166 | 20000 | 20000 | 20000 | TOTAL | | | | |
| | | | | | PHASE TOTAL | | | TOTAL LOAD | | | | | | | |
| | | | | | 30166 | 30166 | 30166 | 90498 | | | | | | | |



FERRIC CHLORIDE TANK CONTROL PANEL
CONTROL ONE LINE DIAGRAM

| | | | | | | | | | | | |
|-----|---------------------|----------|-------------|-------|--|--|---------------------|--|---|----------------|--|
| | | | DESIGNED | BRL | <div>THIS DOCUMENT ORIGINALLY ISSUED FOR CONSTRUCTION AND SEALED BY ROBERT S. DIFIORE, SEAL NO. 22769</div> <div>RECORD DRAWING</div> <div>THIS DRAWING HAS BEEN MODIFIED TO REFLECT FIELD CHANGES REPORTED BY THE CONTRACTOR OR ANOTHER PARTY, BUT NOT VERIFIED BY THE CERTIFYING ENGINEER. THIS DOCUMENT ORIGINALLY ISSUED AND SEALED BY GERALD J. RATASKY, 026535. THIS MEDIA SHALL NOT BE CONSIDERED A CERTIFIED DOCUMENT.</div> <div>HAZEN AND SAWYER</div> <div>Environmental Engineers & Scientists</div> <div>4011 WestChase Blvd, Raleigh, North Carolina 27607</div> | CITY OF ROANOKE | | COAGULATION CHEMICAL FEED FACILITIES | THE SCALE BAR SHOWN BELOW MEASURES ONE INCH LONG ON THE ORIGINAL DRAWING. | DATE JULY 2003 | |
| | | | DRAWN | BRL | | H & S JOB NUMBER 30788A | | | | | |
| | | | CHECKED | | | CONTRACT NUMBER A | DRAWING NUMBER E582 | | | | |
| | | | PROJ. ENGR. | H & S | | | | | | | |
| | RECORD DRAWINGS | MAR 2008 | RLT | | <div>THIS DOCUMENT ORIGINALLY ISSUED FOR CONSTRUCTION AND SEALED BY RONALD L. TAYLOR, SEAL NO. 024649</div> <div>APPROVED</div> | REGIONAL WATER POLLUTION CONTROL PLANT | | PANEL SCHEDULE AND CONTROL SINGLE LINE DIAGRAM | | | |
| | CONSTRUCTION | MAR 2004 | RLT | | | WET WEATHER IMPROVEMENTS | | | | | |
| | REGULATORY APPROVAL | NOV 2003 | RLT | | | | | | | | |
| | PRELIMINARY DESIGN | NOV 2002 | RLT | | | | | | | | |
| NO. | ISSUED FOR | DATE | BY | | | | | | | | |