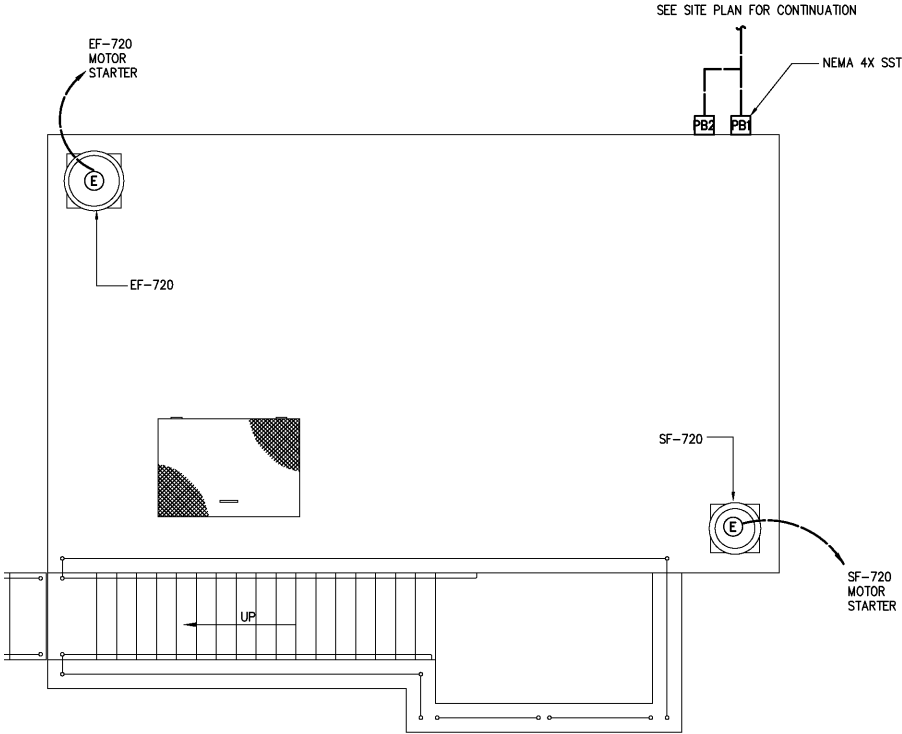
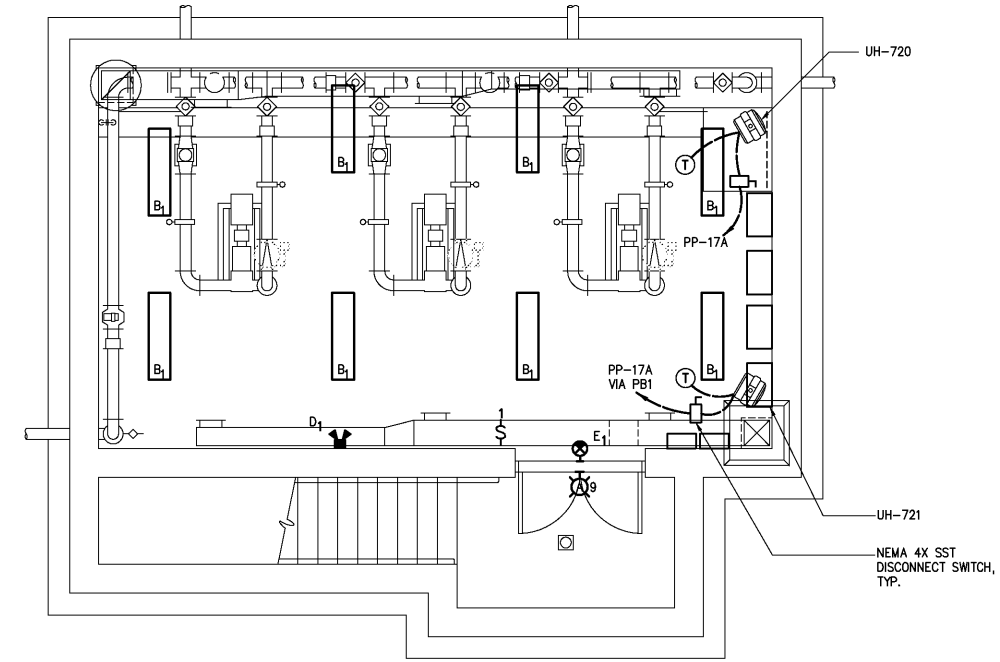


NOTES:
1. FIT 72400 IS LOCATED INSIDE POWERCENTER NO. 3

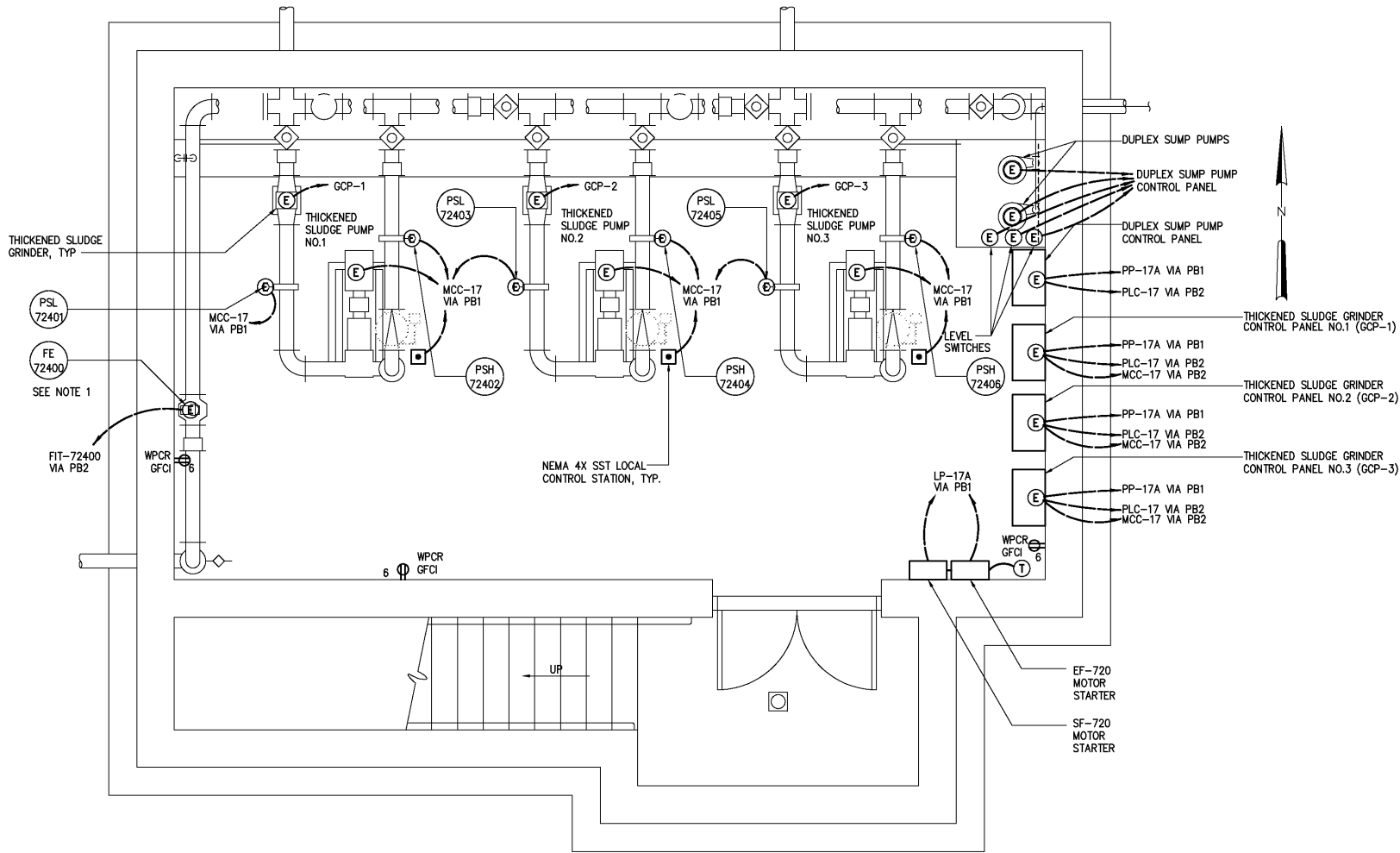
SEE SITE PLAN FOR CONTINUATION
NEMA 4X SST PULL BOX, TYP



TOP PLAN
1/4"=1'-0"



BOTTOM LIGHTING AND HVAC PLAN
1/4"=1'-0"



BOTTOM POWER PLAN
3/8"=1'-0"

DESIGNED	BRL
DRAWN	BRL
CHECKED	
PROJ. ENGR.	DAN
APPROVED	
NO.	
ISSUED FOR	DATE
RECORD DRAWINGS	MAR 2008
CONSTRUCTION	MAR 2004
REGULATORY APPROVAL	NOV 2003
PRELIMINARY DESIGN	NOV 2002

THIS DOCUMENT ORIGINALLY ISSUED FOR CONSTRUCTION AND SEALED BY ROBERT S. DIFIORE, SEAL NO. 22769

RECORD DRAWING

THIS DRAWING HAS BEEN MODIFIED TO REFLECT FIELD CHANGES REPORTED BY THE CONTRACTOR OR ANOTHER PARTY, BUT NOT VERIFIED BY THE CERTIFYING ENGINEER. THIS DOCUMENT ORIGINALLY ISSUED AND SEALED BY GERALD J. RATASKY, 026535. THIS MEDIA SHALL NOT BE CONSIDERED A CERTIFIED DOCUMENT.

THIS DOCUMENT ORIGINALLY ISSUED FOR CONSTRUCTION AND SEALED BY RONALD L. TAYLOR, SEAL NO. 024649

HAZEN AND SAWYER
Environmental Engineers & Scientists
4011 WestChase Blvd, Raleigh, North Carolina 27607

CITY OF ROANOKE
VIRGINIA

REGIONAL WATER POLLUTION CONTROL PLANT
WET WEATHER IMPROVEMENTS

THICKENED SLUDGE PUMP STATION
ELECTRICAL
PLANS

THE SCALE BAR SHOWN BELOW MEASURES ONE INCH LONG ON THE ORIGINAL DRAWING.	DATE	JULY 2003
	H & S JOB NUMBER	30788A
	CONTRACT NUMBER	A
	DRAWING NUMBER	E720