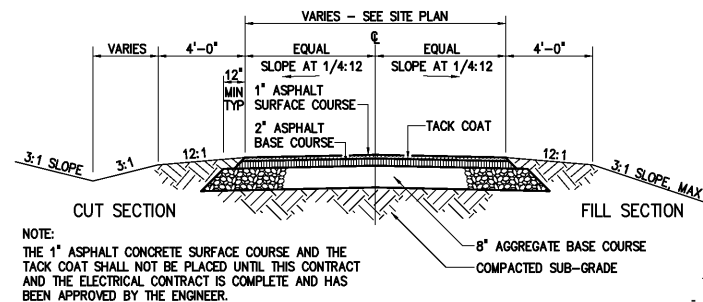
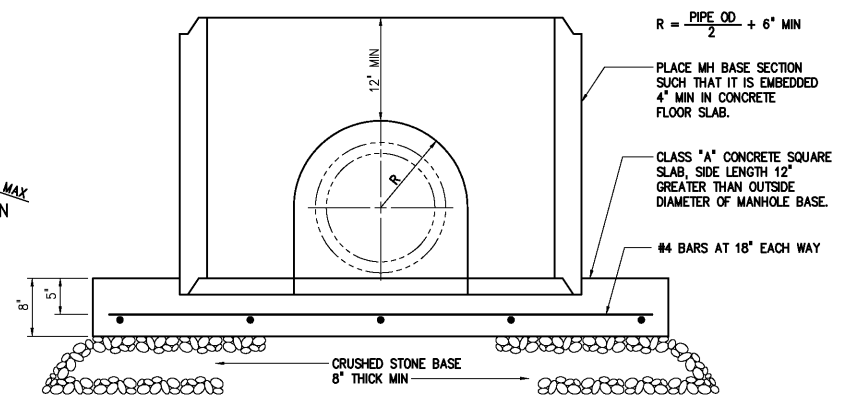


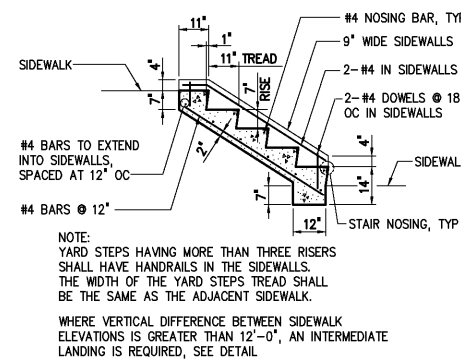
TYPICAL ROADWAY SECTION  
0251004R



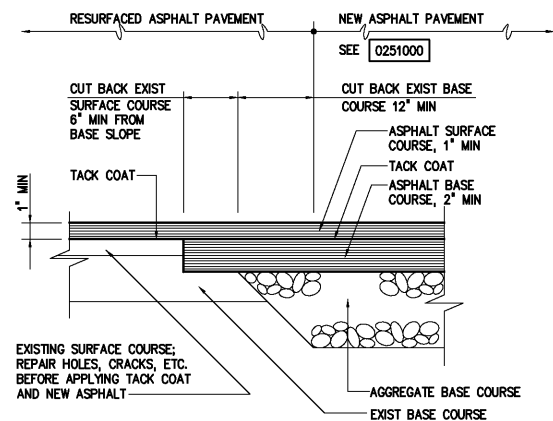
TYPICAL ROADWAY SECTION  
0251000



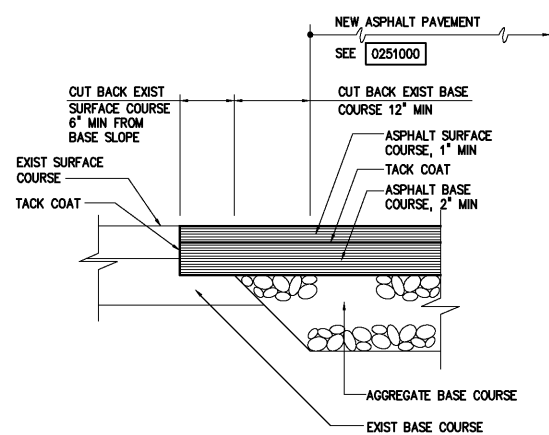
DOGHOUSE PRECAST MANHOLES  
0260102



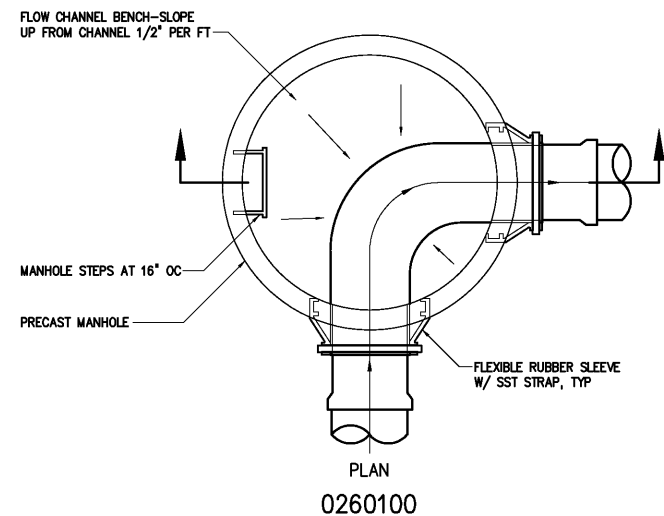
CONCRETE YARD STEPS  
0245001



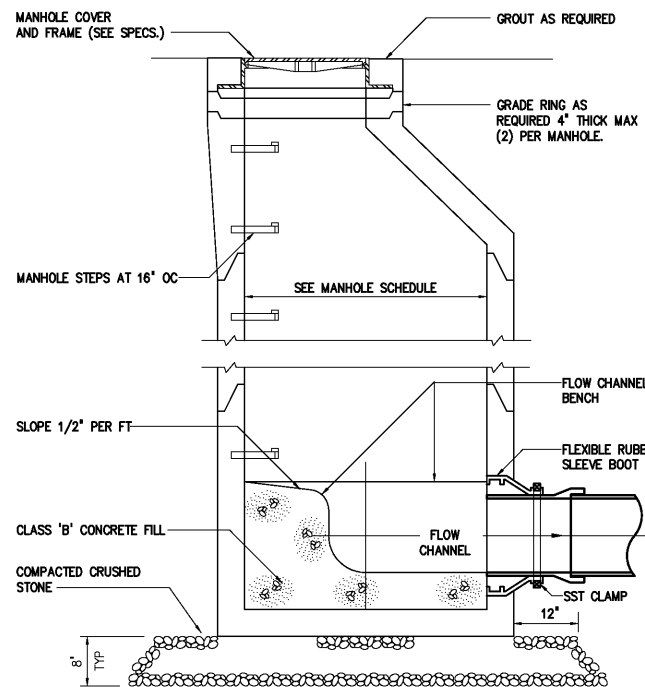
TYPICAL PAVEMENT JUNCTION WITH  
RESURFACING OF EXISTING PAVEMENT  
0251300



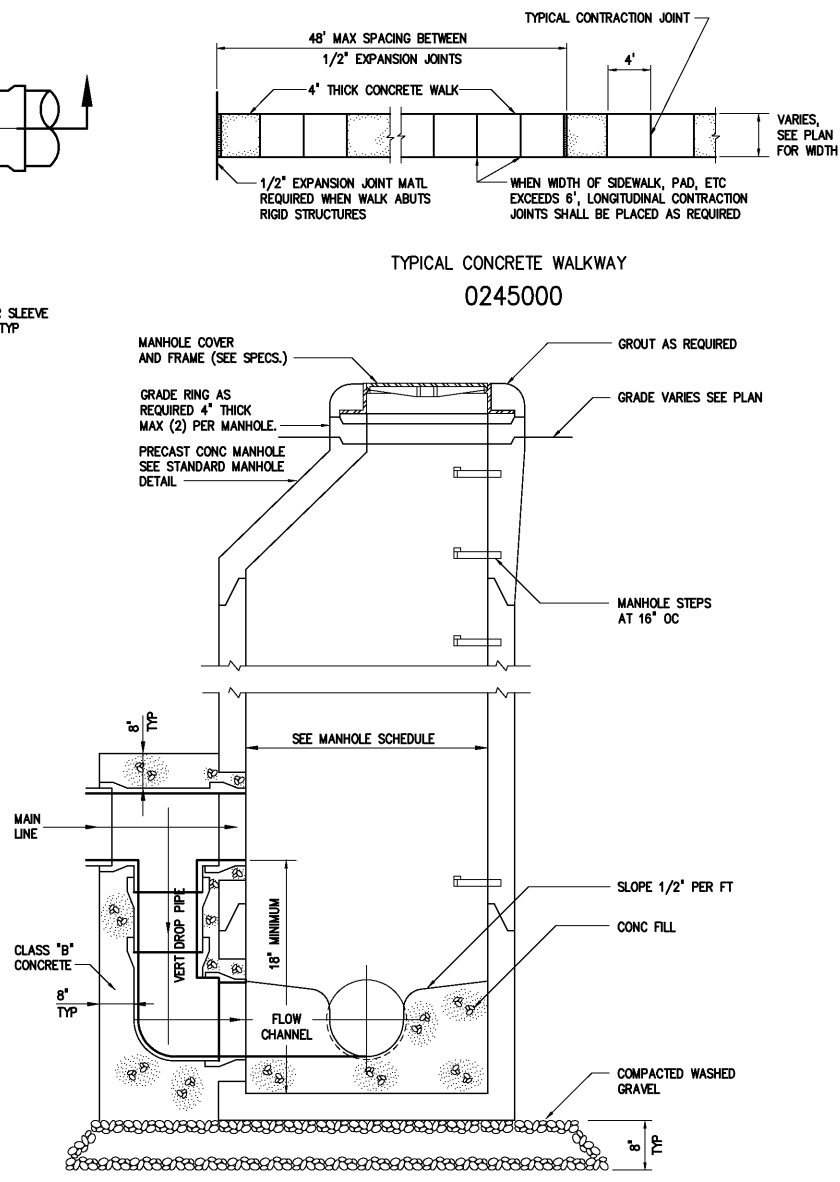
TYPICAL PAVEMENT JUNCTION  
0251301



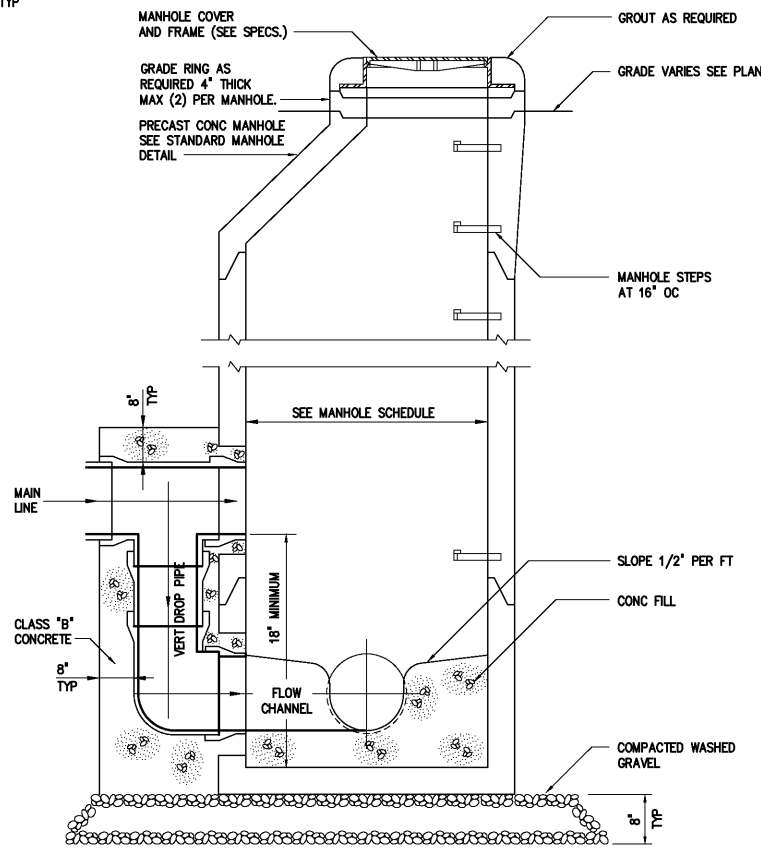
PLAN  
0260100



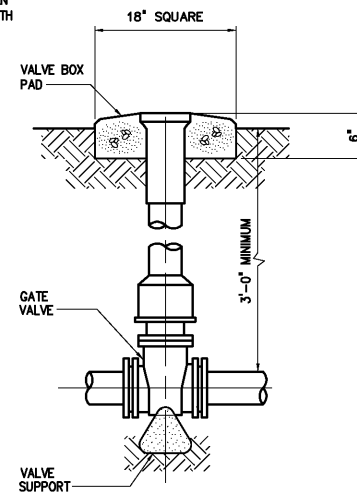
SECTION  
0260101



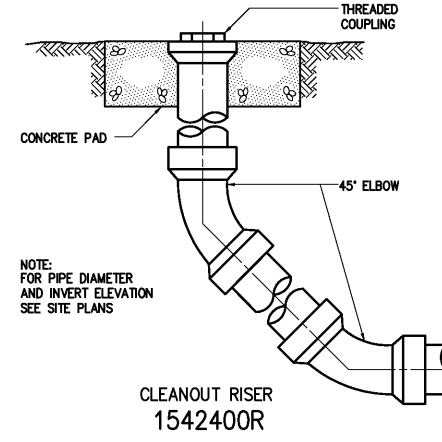
TYPICAL CONCRETE WALKWAY  
0245000



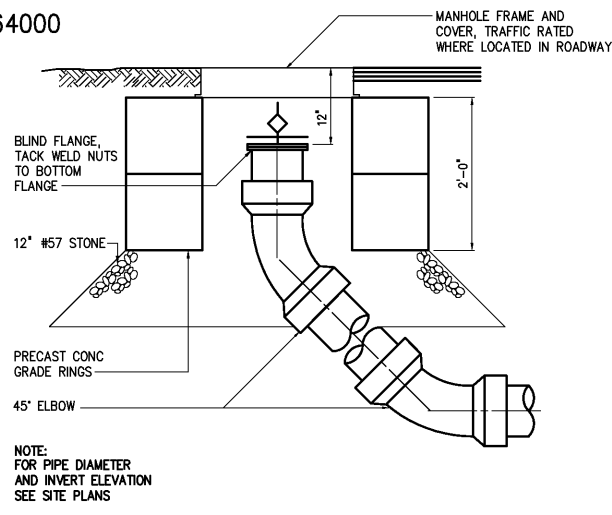
DROP MANHOLE  
0260109



VALVE BOX  
0264000



CLEANOUT RISER  
1542400R



CLEANOUT RISER  
(PRESSURIZED LINE)  
1542401R

NO. 01/07/03 4:19pm RECORD DRAWINGS CONSTRUCTION REGULATORY APPROVAL PRELIMINARY DESIGN ISSUED FOR	MAR 2008 MAR 2004 NOV 2003 NOV 2002 DATE	RLT RLT RLT RLT BY	DESIGNED DRAWN CHECKED PROJ. ENGR. APPROVED	H & S H & S H & S H & S H & S	<b>RECORD DRAWING</b> THIS DOCUMENT ORIGINALLY ISSUED FOR CONSTRUCTION AND SEALED BY ROBERT S. DIFIORE, SEAL NO. 22769 THIS DRAWING HAS BEEN MODIFIED TO REFLECT FIELD CHANGES REPORTED BY THE CONTRACTOR OR ANOTHER PARTY, BUT NOT VERIFIED BY THE CERTIFYING ENGINEER. THIS DOCUMENT ORIGINALLY ISSUED AND SEALED BY DAVID A. NAILOR, 025465. THIS MEDIA SHALL NOT BE CONSIDERED A CERTIFIED DOCUMENT.	<b>Hazen and Sawyer</b> Environmental Engineers & Scientists 4011 WestChase Blvd, Raleigh, North Carolina 27607	<b>CITY OF ROANOKE</b> VIRGINIA <b>REGIONAL WATER POLLUTION CONTROL PLANT</b> <b>WET WEATHER IMPROVEMENTS</b>	<b>MISCELLANEOUS STANDARD DETAILS</b>	THE SCALE BAR SHOWN BELOW MEASURES ONE INCH LONG ON THE ORIGINAL DRAWING. DATE JULY 2003 H & S JOB NUMBER 30788A CONTRACT NUMBER A DRAWING NUMBER D6
---	--	--------------------------------	---	---	--	---	--	---------------------------------------	--