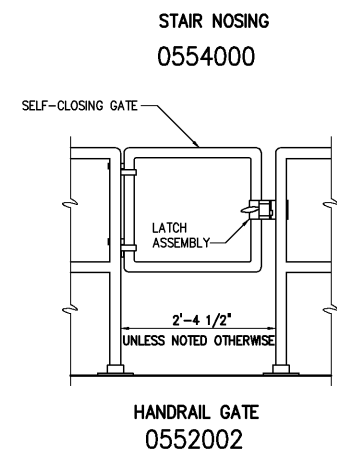
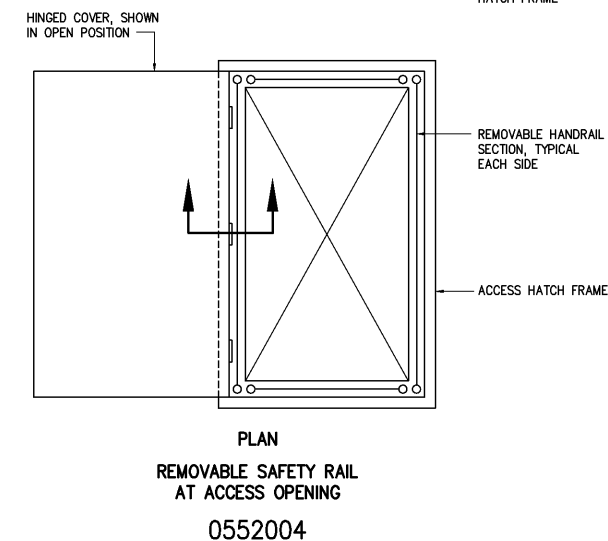
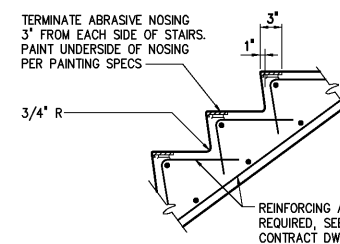
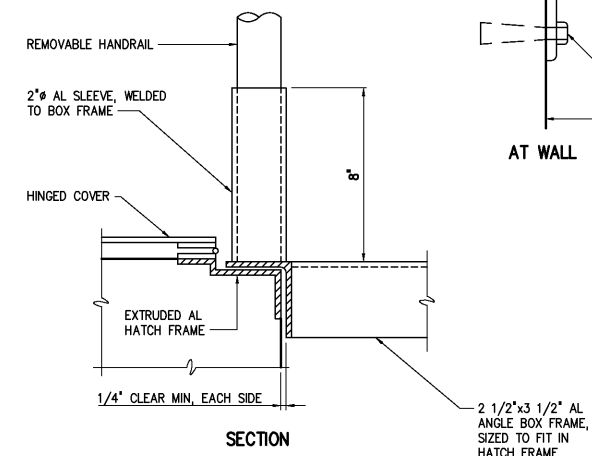
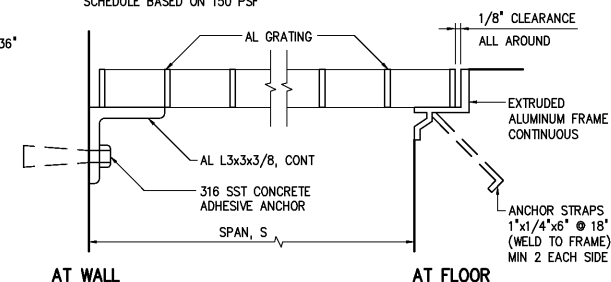


| SPAN, S | DEPTH (MIN) | CONCRETE ANCHOR (SIZE AND SPACING) |
|-------------------|-------------|------------------------------------|
| 0'-0" ≤ S ≤ 4'-0" | 1 1/2" | 1/2" x 5 1/2" @ 18" |
| 4'-0" ≤ S ≤ 5'-0" | 1 3/4" | |
| 5'-0" ≤ S ≤ 5'-6" | 2" | 5/8" x 6" @ 18" |
| 5'-6" ≤ S ≤ 6'-0" | 2 1/4" | |
| 6'-0" ≤ S ≤ 6'-6" | 2 1/2" | |

SCHEDULE BASED ON 150 PSF



| | | | | | | |
|-----|---------------------|----------|-----|--|-------------|-------|
| | | | | | DESIGNED | H & S |
| | | | | | DRAWN | H & S |
| | | | | | CHECKED | |
| | RECORD DRAWINGS | MAR 2008 | RLT | | PROJ. ENGR. | H & S |
| | CONSTRUCTION | MAR 2004 | RLT | | | |
| | REGULATORY APPROVAL | NOV 2003 | RLT | | | |
| | PRELIMINARY DESIGN | NOV 2002 | RLT | | | |
| NO. | ISSUED FOR | DATE | BY | | APPROVED | |

THIS DOCUMENT ORIGINALLY ISSUED
FOR CONSTRUCTION AND SEALED BY
ROBERT S. DiFIORE, SEAL NO. 22769

THIS DOCUMENT ORIGINALLY ISSUED
FOR CONSTRUCTION AND SEALED BY
RONALD L. TAYLOR, SEAL NO. 024649

RECORD DRAWING

THIS DRAWING HAS BEEN MODIFIED TO REFLECT FIELD
CHANGES REPORTED BY THE CONTRACTOR OR ANOTHER
PARTY, BUT NOT VERIFIED BY THE CERTIFYING ENGINEER.
THIS DOCUMENT ORIGINALLY ISSUED AND SEALED BY
CHRISTOPHER T. PHILLIPS, 033796. THIS MEDIA SHALL
NOT BE CONSIDERED A CERTIFIED DOCUMENT.

HAZEN AND SAWYER
Environmental Engineers & Scientists
4011 WestChase Blvd, Raleigh, North Carolina 27607

CITY OF ROANOKE
VIRGINIA

REGIONAL WATER POLLUTION CONTROL PLANT WET WEATHER IMPROVEMENTS

MISCELLANEOUS STANDARD DETAILS

| | | |
|---------------|------|-----------|
| THE SCALE BAR | DATE | JULY 2003 |
|---------------|------|-----------|

| | | |
|-----------------------------|---------------------|--------|
| SHOWN BELOW MEASURES ONE | H & S JOB NUMBER | 30788A |
|-----------------------------|---------------------|--------|

| | | |
|--|-------------------------|-------------------------|
| INCH LONG ON THE ORIGINAL DRAWING. | CONTRACT NUMBER A | DRAWING NUMBER D2 |
|--|-------------------------|-------------------------|