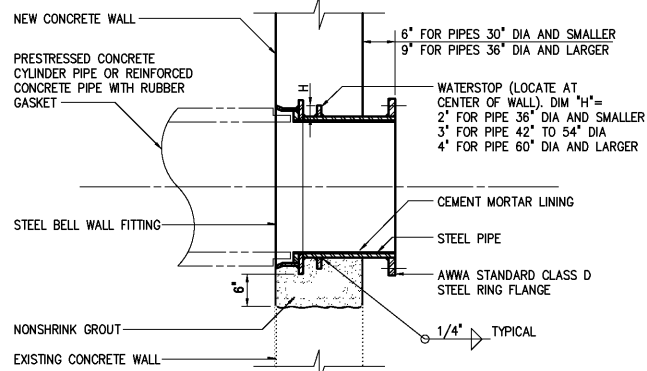
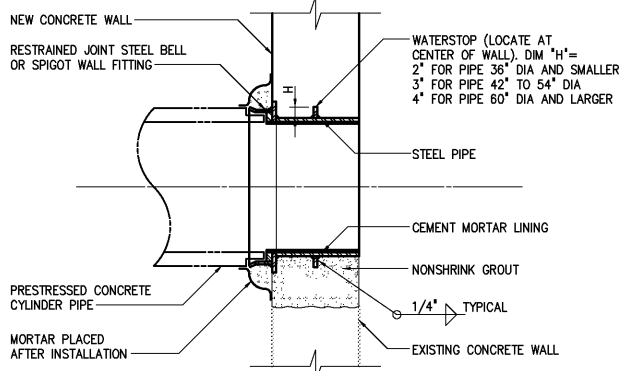


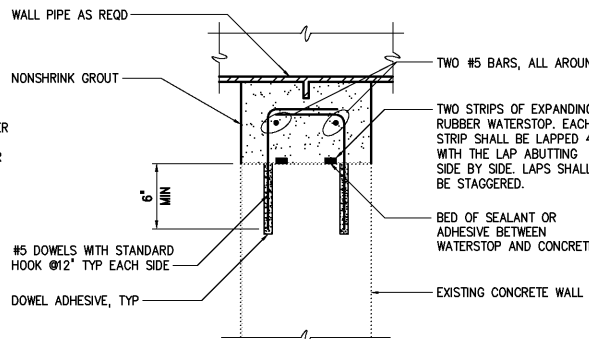
1509213



1509226

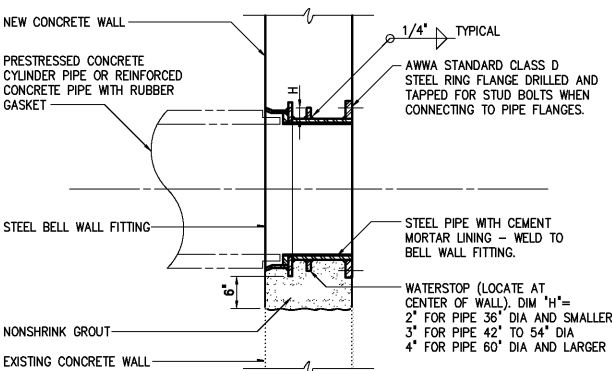


1509229

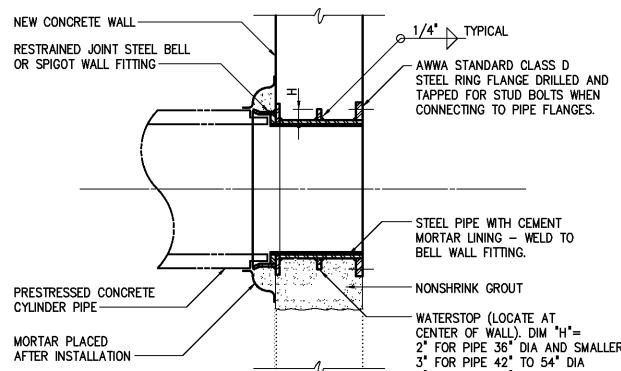


WATERSTOP
1509222

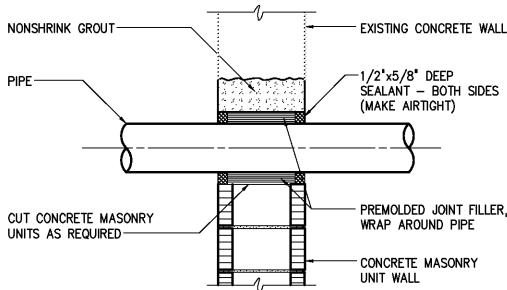
NOTES:
ALL OPENINGS SHALL BE SAWCUT OR (SINGLE) CORE DRILLED AS REQUIRED.
USE OF JACKHAMMERS OR STITCH DRILLING IS NOT PERMITTED. THE PERIMETER SURFACE OF THE OPENING SHALL BE SMOOTH.



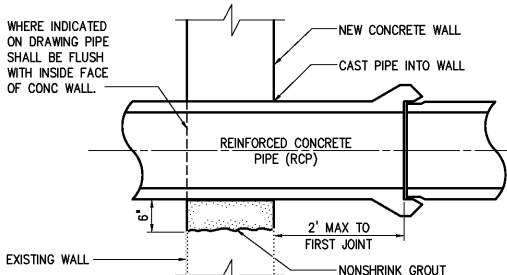
1509214



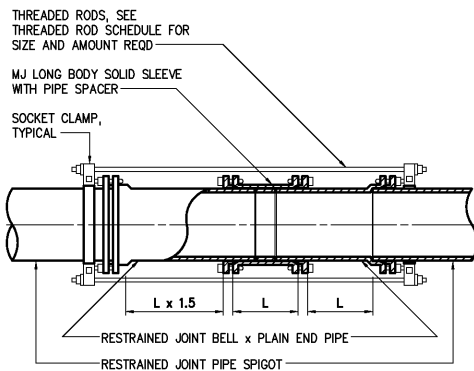
1509227



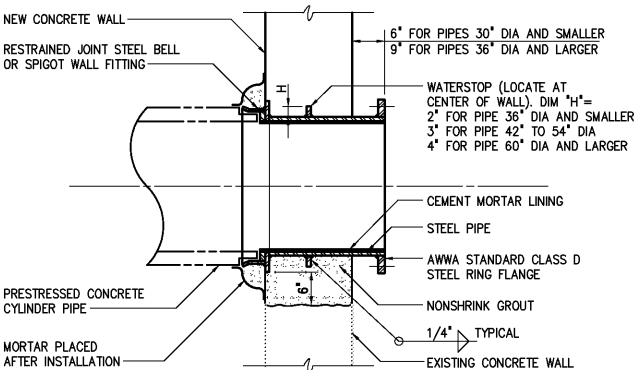
CAULKED WALL PENETRATION
1509217



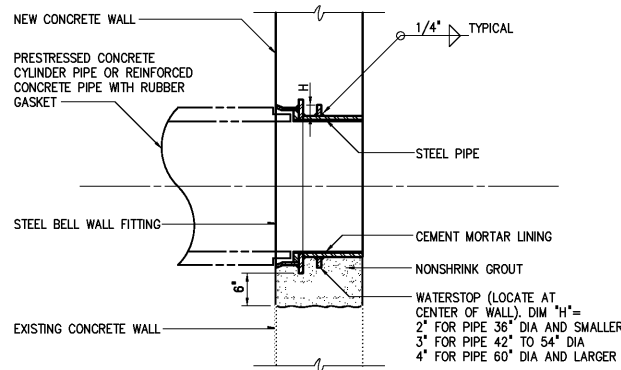
REINFORCED CONCRETE PIPE
WALL PENETRATION
1509218



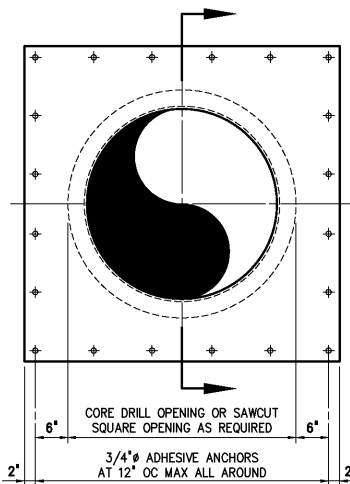
RESTRAINED MJ SOLID SLEEVE
1509221



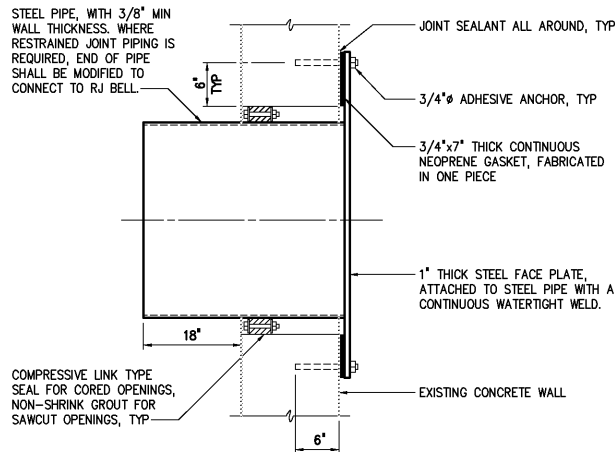
1509215



1509228



ELEVATION



SECTION

1509230

NOTES:

- 1 ALL WALL PIPES SHALL BE CAST UNLESS OTHERWISE NOTED.
- 2 PROVIDE PIPE JOINT WITHIN TWO (2) FEET OF EXTERIOR FACE OF WALL AT CONNECTION TO ALL NEW AND EXISTING STRUCTURES OR MANHOLES.
- 3 COMBINATION WATERSTOP SHALL BE REQUIRED AT ALL NEW PIPE PENETRATIONS THROUGH EXISTING CONCRETE WALLS UNLESS OTHERWISE INDICATED ON THE CONTRACT DRAWINGS. SEE COMBINATION WATERSTOP DETAIL 1509222.
- 4 ALL NEW OPENINGS IN EXISTING CONCRETE WALLS SHALL BE ACCOMPLISHED WITH A CLEAN SAW-CUT. SURFACES SHALL BE ROUGHENED BY APPROVED METHODS.

DESIGNED	H & S
DRAWN	H & S
CHECKED	
PROJ. ENGR.	H & S
APPROVED	
NO.	
RECORD DRAWINGS	MAR 2008
CONSTRUCTION	MAR 2004
REGULATORY APPROVAL	NOV 2003
PRELIMINARY DESIGN	NOV 2002
ISSUED FOR	DATE
	BY

THIS DOCUMENT ORIGINALLY ISSUED FOR CONSTRUCTION AND SEALED BY ROBERT S. DIFIORE, SEAL NO. 22769

RECORD DRAWING

THIS DRAWING HAS BEEN MODIFIED TO REFLECT FIELD CHANGES REPORTED BY THE CONTRACTOR OR ANOTHER PARTY, BUT NOT VERIFIED BY THE CERTIFYING ENGINEER. THIS DOCUMENT ORIGINALLY ISSUED AND SEALED BY DAVID A. NAILOR, 025465. THIS MEDIA SHALL NOT BE CONSIDERED A CERTIFIED DOCUMENT.

THIS DOCUMENT ORIGINALLY ISSUED FOR CONSTRUCTION AND SEALED BY RONALD L. TAYLOR, SEAL NO. 024649

HAZEN AND SAWYER
Environmental Engineers & Scientists
4011 WestChase Blvd, Raleigh, North Carolina 27607

CITY OF ROANOKE
VIRGINIA

REGIONAL WATER POLLUTION CONTROL PLANT
WET WEATHER IMPROVEMENTS

MISCELLANEOUS STANDARD DETAILS

THE SCALE BAR SHOWN BELOW MEASURES ONE INCH LONG ON THE ORIGINAL DRAWING.	DATE	JULY 2003
	H & S JOB NUMBER	30788A
	CONTRACT NUMBER	A
	DRAWING NUMBER	D12