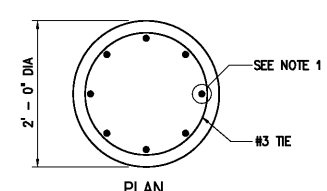
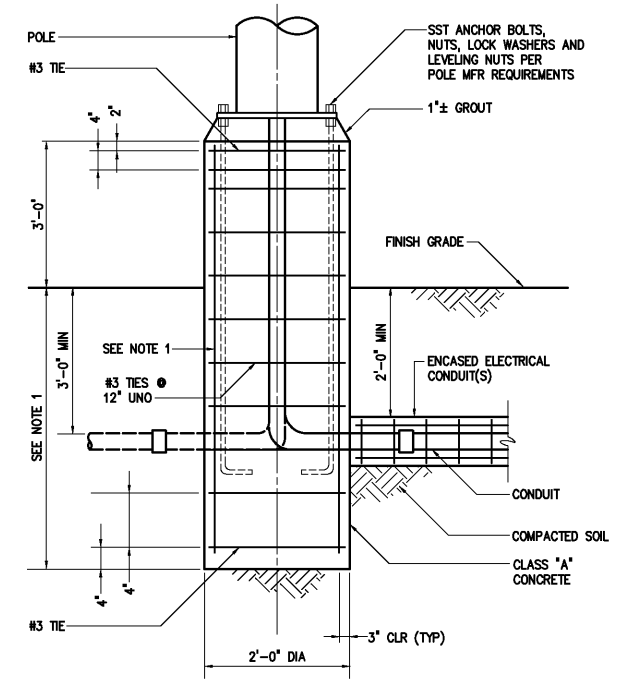


\* 1" CLEAR FOR ELEVATED SLABS  
3" CLEAR FOR SLABS ON GRADE  
OR FOOTING

CONCRETE ENCASED GROUND  
1617004



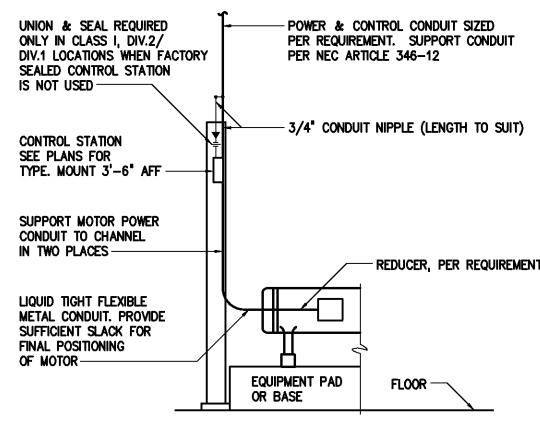
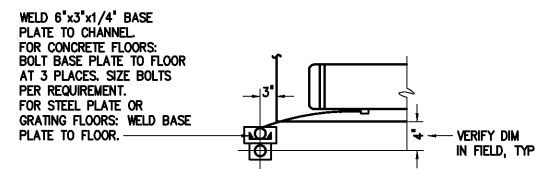
PLAN



ELEVATION

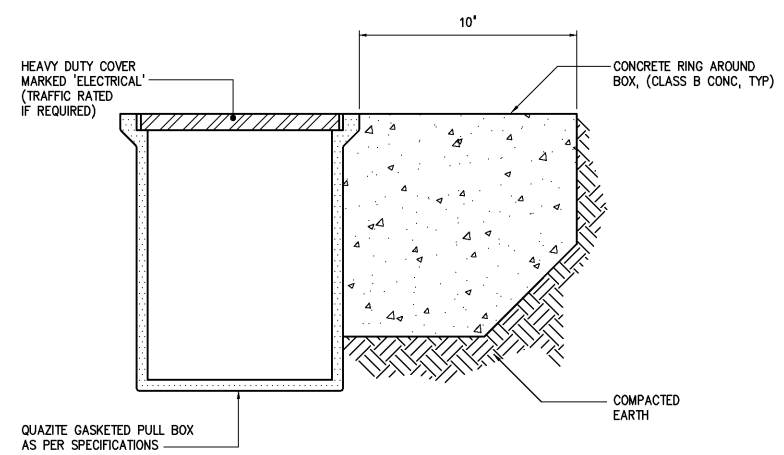
NOTES:  
1 IF NOT SPECIFIED OR SHOWN, DEPTH AND REINFORCEMENT SHALL BE DETERMINED BY POLE MANUFACTURER. LOADING SHALL BE DEAD LOAD PLUS 100 MPH WIND, STANDARD EXPOSURE PER STANDARD BUILDING CODE.

AREA LIGHTING FIXTURE MOUNTING  
1650002

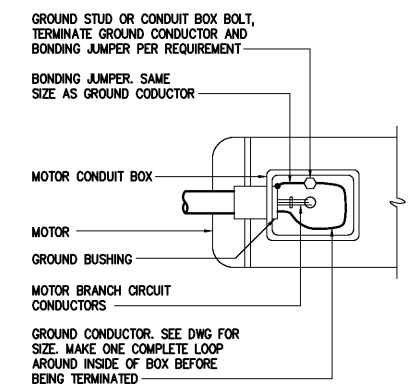


MOTOR CONDUIT INSTALLATION DETAIL  
HAZARDOUS AND NONHAZARDOUS LOCATIONS  
POWER AND CONTROL WIRE IN SAME CONDUIT

1618001

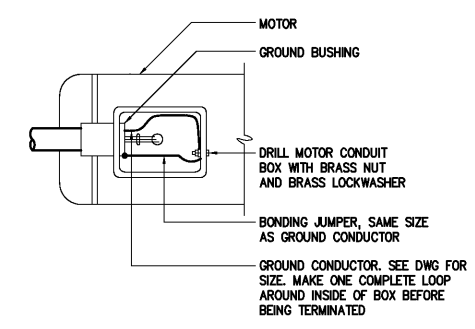


PULL BOX AND HAND HOLE (HH) INSTALLATION DETAIL  
1611803



NOTE:  
OMIT GROUND BUSHING AND BONDING JUMPER FOR MOTOR CONDUIT BOX WITH THREADED HUB

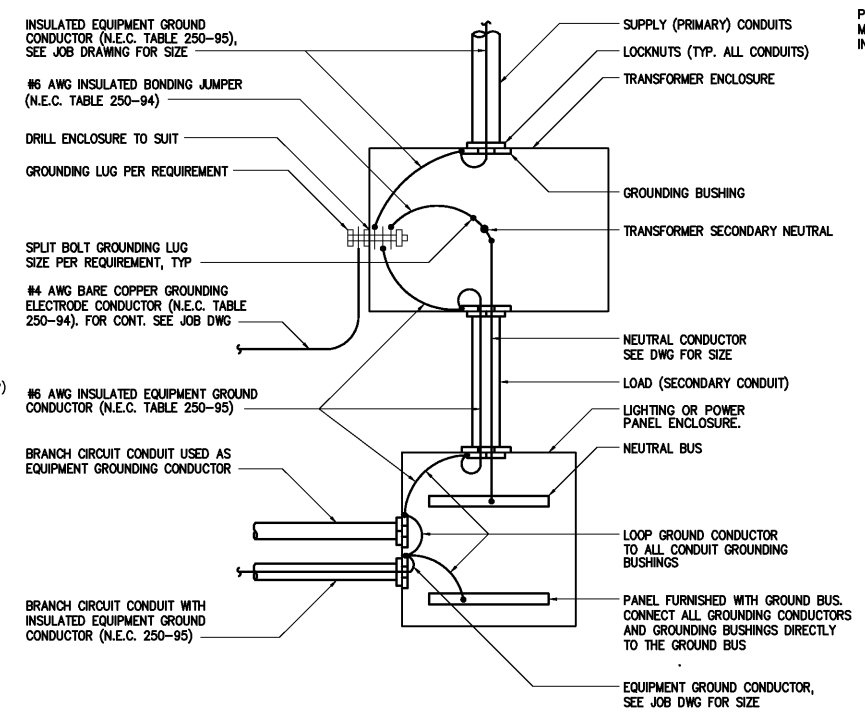
PREFERRED INSTALLATION



NOTE:  
OMIT GROUND BUSHING AND BONDING JUMPER FOR MOTOR CONDUIT BOX WITH THREADED HUB

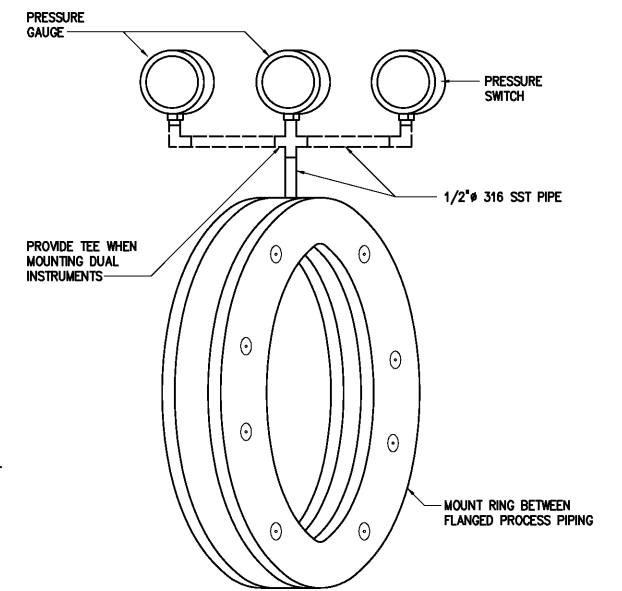
ALTERNATE INSTALLATION

LOW VOLTAGE MOTOR GROUNDING CONNECTIONS  
HAZARDOUS AND NONHAZARDOUS  
1618002

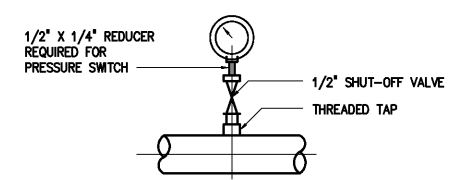


NOTES:  
1 GROUNDING CONDUCTORS SHOWN ARE FOR TRANSFORMERS UP TO 45KVA. SEE ELECT. JOB DRAWINGS FOR LARGER TRANSFORMERS OR WHEN VOLTAGE DROP REQUIRES LARGER CONDUCTORS.

LOW VOLTAGE TRANSFORMER GROUNDING INSTALLATION DETAIL  
1618003



IN-LINE ISOLATING RING DETAIL  
FOR HEAVY SOLIDS/SLURRY SERVICE  
1691006



PRESSURE GAUGE OR SWITCH  
INSTALLATION WITH THREADED TAP  
(SHOWN WITHOUT DIAPHRAGM SEAL)  
USED FOR PIPES 2" AND LARGER  
1691004

DESIGNED H & S				RECORD DRAWING		CITY OF ROANOKE VIRGINIA		DATE JULY 2003	
DRAWN H & S				THIS DRAWING HAS BEEN MODIFIED TO REFLECT FIELD CHANGES REPORTED BY THE CONTRACTOR OR ANOTHER PARTY, BUT NOT VERIFIED BY THE CERTIFYING ENGINEER.		REGIONAL WATER POLLUTION CONTROL PLANT WET WEATHER IMPROVEMENTS		H & S JOB NUMBER 30788A	
CHECKED				THIS DOCUMENT ORIGINALLY ISSUED FOR CONSTRUCTION AND SEALED BY ROBERT S. DIFIORE, SEAL NO. 22769		4011 WestChase Blvd, Raleigh, North Carolina 27607		CONTRACT NUMBER A	
PROJ. ENGR. H & S				THIS DOCUMENT ORIGINALLY ISSUED FOR CONSTRUCTION AND SEALED BY RONALD L. TAYLOR, SEAL NO. 024649				DRAWING NUMBER D16	
ISSUED FOR									
DATE BY APPROVED									
NO.									