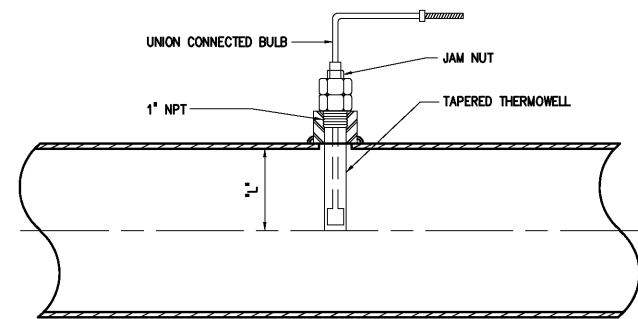
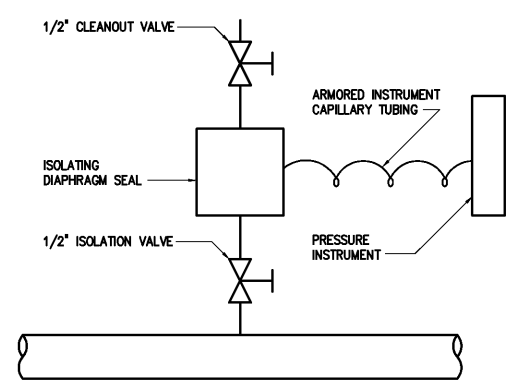


pH PROBE  
ENCLOSED CHANNEL INSERTION  
MOUNTING DETAIL  
1691009

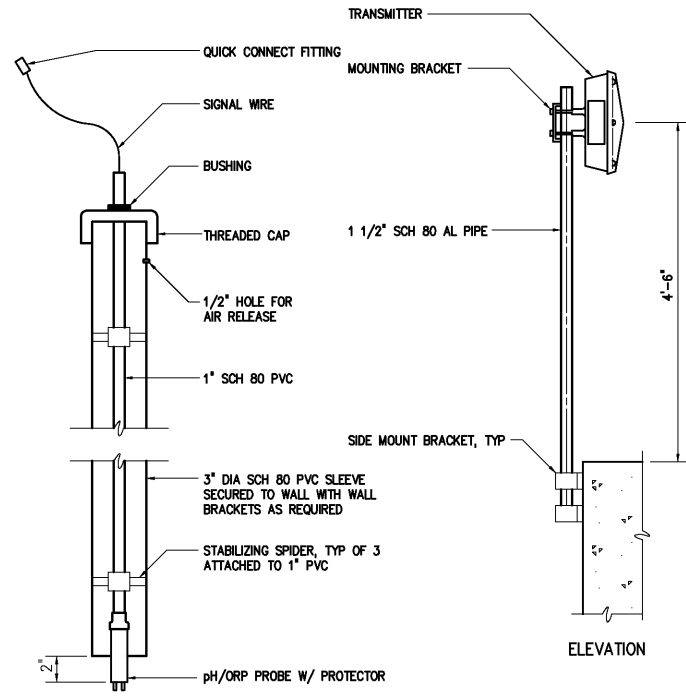
- NOTES:
- TEMPERATURE INSTRUMENT NOT SHOWN
  - INSERTION LENGTH "L" SHALL BE AS FOLLOWS:  
FOR PIPES UP TO 12 INCHES "L" SHALL EQUAL 1/3 THE DIAMETER OF THE PIPE. FOR LARGER PIPES AND VESSELS, "L" SHALL BE SIZED SO THAT IT EXTENDS 4 INCHES INTO THE PROCESS.



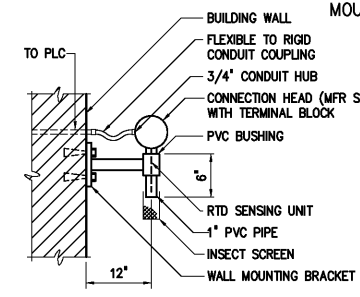
TYPICAL TEMPERATURE ELEMENT  
1696100



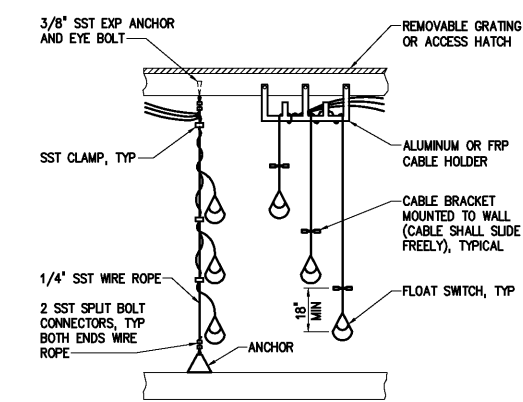
TAPPED DIAPHRAM SEAL DETAIL  
1696105



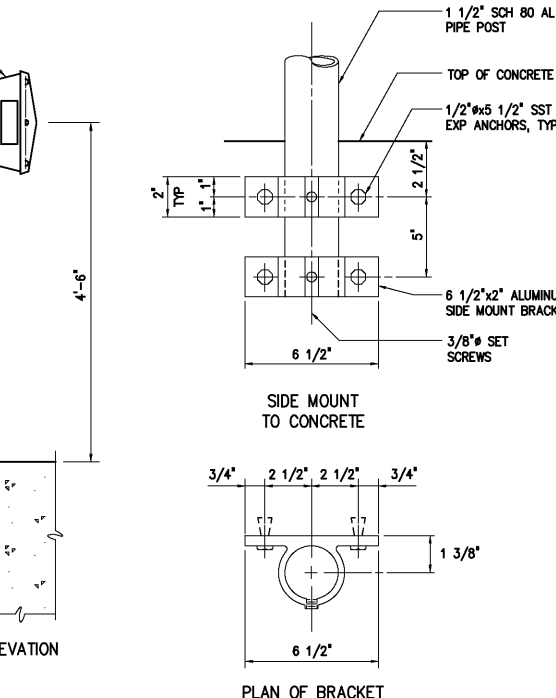
REMOVABLE pH/ORP PROBE  
IN STATIONARY SLEEVE  
1696104



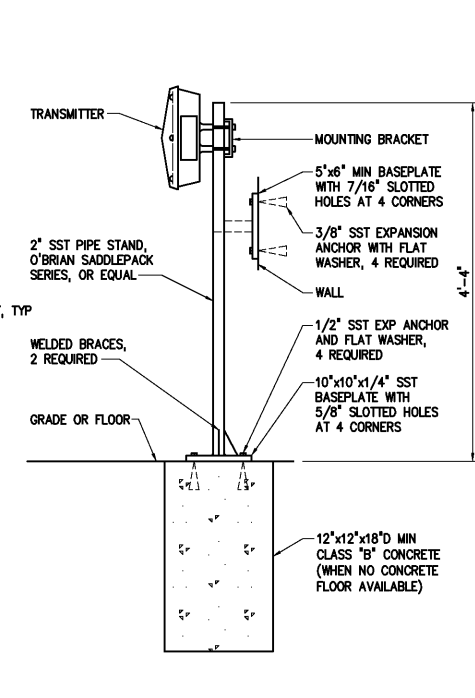
NOTE: TIP OF PROBE SHOULD NOT  
PROTRUDE FROM THE PVC PIPE.  
TYPICAL AMBIENT TEMPERATURE  
SENSING ELEMENT MOUNTED  
ON EXTERIOR WALL  
1696103



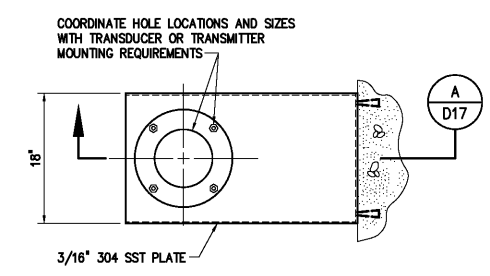
TYPICAL LEVEL SWITCH  
MOUNTING DETAILS  
1696200



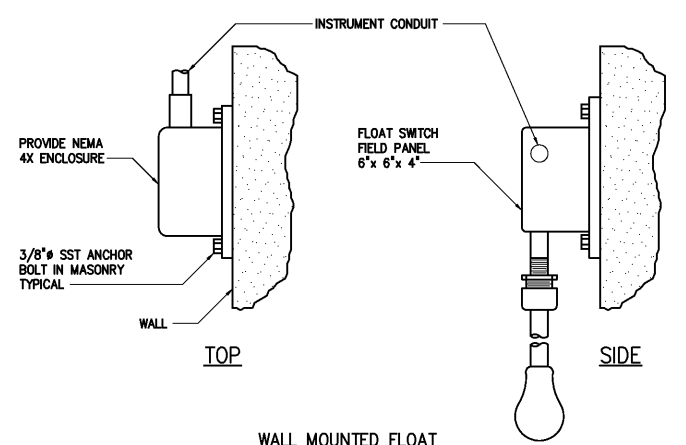
TYPICAL PIPE STAND TRANSMITTER  
MOUNTED ON SIDE WALL  
1696213



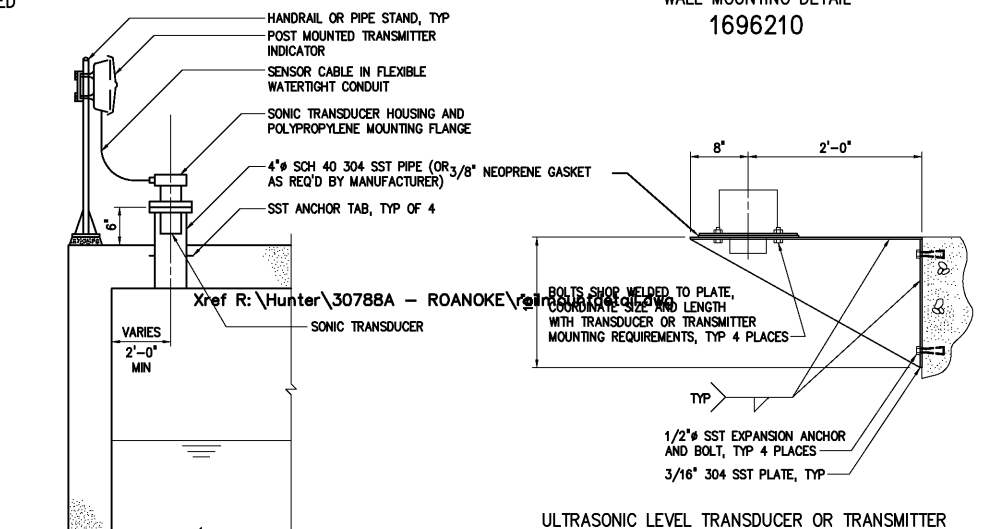
TYPICAL PIPE STAND TRANSMITTER MOUNT  
FLOOR OR WALL  
1696214



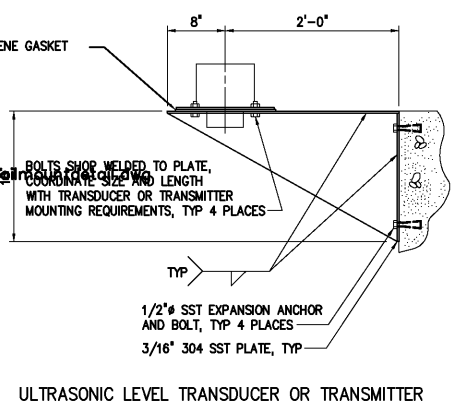
ULTRASONIC LEVEL TRANSDUCER OR TRANSMITTER  
WALL MOUNTING DETAIL  
1696210



WALL MOUNTED FLOAT  
SWITCH DETAIL  
1696203



SONIC LEVEL  
SENSOR DETAIL  
1696202



TRANSDUCER MOUNTING DETAIL  
1696215

DESIGNED	H & S
DRAWN	H & S
CHECKED	
PROJ. ENGR.	H & S
APPROVED	
NO.	
ISSUED FOR	DATE BY
RECORD DRAWINGS	MAR 2008 RLT
CONSTRUCTION	MAR 2004 RLT
REGULATORY APPROVAL	NOV 2003 RLT
PRELIMINARY DESIGN	NOV 2002 RLT

THIS DOCUMENT ORIGINALLY ISSUED FOR CONSTRUCTION AND SEALED BY ROBERT S. DIFIORE, SEAL NO. 22769	RECORD DRAWING	THIS DRAWING HAS BEEN MODIFIED TO REFLECT FIELD CHANGES REPORTED BY THE CONTRACTOR OR ANOTHER PARTY, BUT NOT VERIFIED BY THE CERTIFYING ENGINEER. THIS DOCUMENT ORIGINALLY ISSUED AND SEALED BY DANIEL B. EDWARDS, SEAL NUMBER 024960. THIS MEDIA SHALL NOT BE CONSIDERED A CERTIFIED DOCUMENT.
THIS DOCUMENT ORIGINALLY ISSUED FOR CONSTRUCTION AND SEALED BY RONALD L. TAYLOR, SEAL NO. 024649		

**Hazen and Sawyer**  
Environmental Engineers & Scientists  
4011 WestChase Blvd, Raleigh, North Carolina 27607

**CITY OF ROANOKE**  
VIRGINIA  
REGIONAL WATER POLLUTION CONTROL PLANT  
WET WEATHER IMPROVEMENTS

MISCELLANEOUS STANDARD DETAILS

THE SCALE BAR SHOWN BELOW MEASURES ONE INCH LONG ON THE ORIGINAL DRAWING.	DATE JULY 2003
H & S JOB NUMBER 30788A	
CONTRACT NUMBER A	DRAWING NUMBER D17