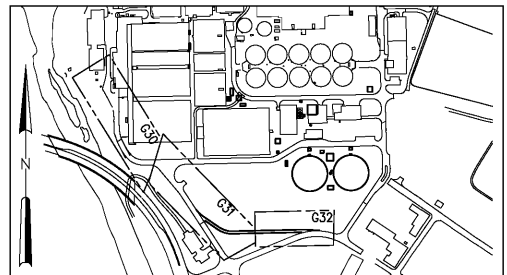
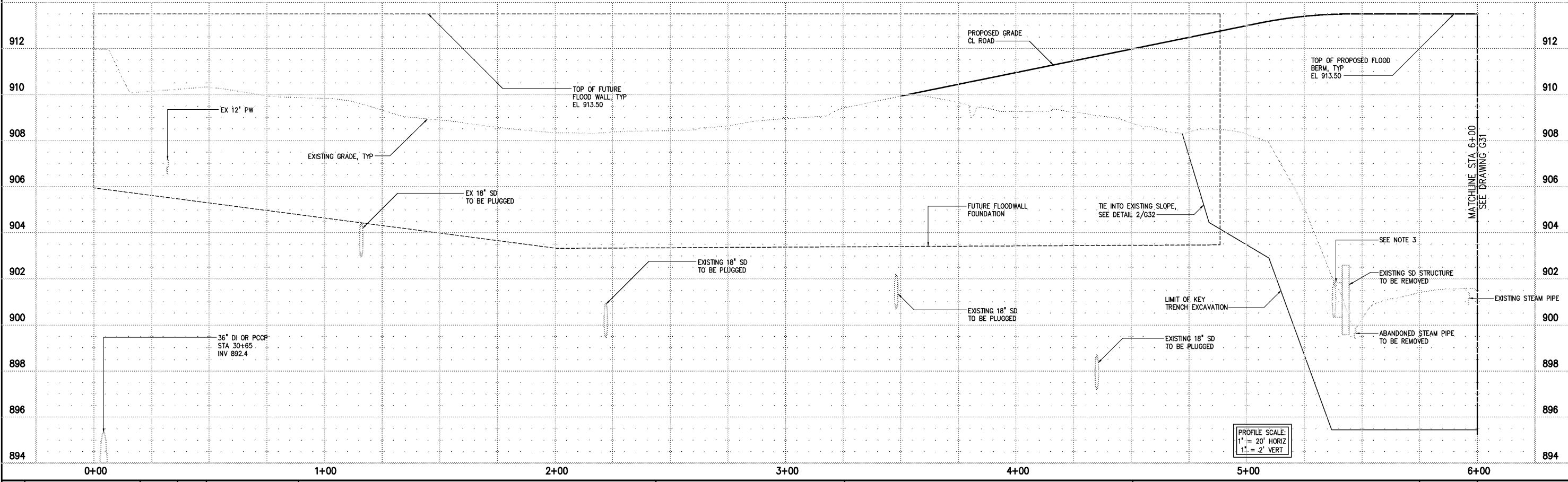
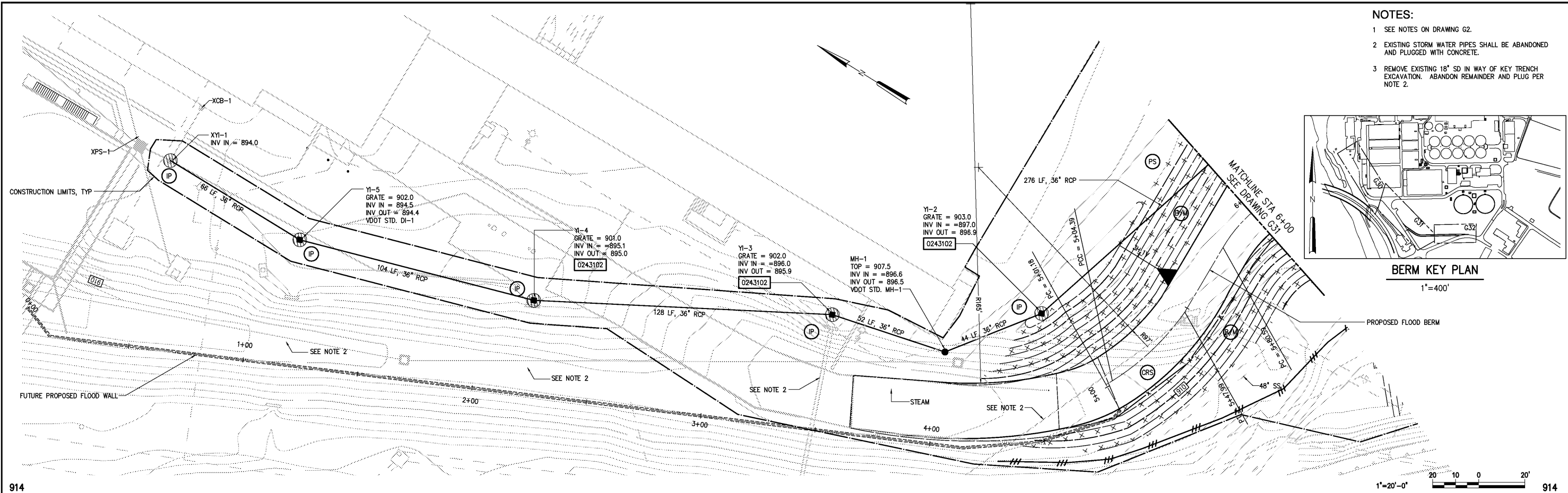


- NOTES:
- 1 SEE NOTES ON DRAWING G2.
 - 2 EXISTING STORM WATER PIPES SHALL BE ABANDONED AND PLUGGED WITH CONCRETE.
 - 3 REMOVE EXISTING 18" SD IN WAY OF KEY TRENCH EXCAVATION. ABANDON REMAINDER AND PLUG PER NOTE 2.



BERM KEY PLAN
1"=400'



DESIGNED DAN				RECORD DRAWING		CITY OF ROANOKE VIRGINIA		PLAN AND PROFILE		DATE MARCH 2004	
DRAWN JTC				THIS DRAWING HAS BEEN MODIFIED TO REFLECT FIELD CHANGES REPORTED BY THE CONTRACTOR OR ANOTHER PARTY, BUT NOT VERIFIED BY THE CERTIFYING ENGINEER. THIS DOCUMENT ORIGINALLY ISSUED AND SEALED BY DAVID A. NAILOR, 025465. THIS MEDIA SHALL NOT BE CONSIDERED A CERTIFIED DOCUMENT.		REGIONAL WATER POLLUTION CONTROL PLANT PROCESS TRAIN IMPROVEMENTS		GENERAL		H & S JOB NUMBER 30788B	
CHECKED				THIS DOCUMENT ORIGINALLY ISSUED FOR CONSTRUCTION AND SEALED BY ROBERT S. DIFIORE, SEAL NO. 22769				FLOOD PROTECTION BERM AND FLOODWALL		CONTRACT NUMBER B	
PROJ. ENGR. DAN				THIS DOCUMENT ORIGINALLY ISSUED FOR CONSTRUCTION AND SEALED BY RONALD L. TAYLOR, SEAL NO. 024649						DRAWING NUMBER G30	
APPROVED											