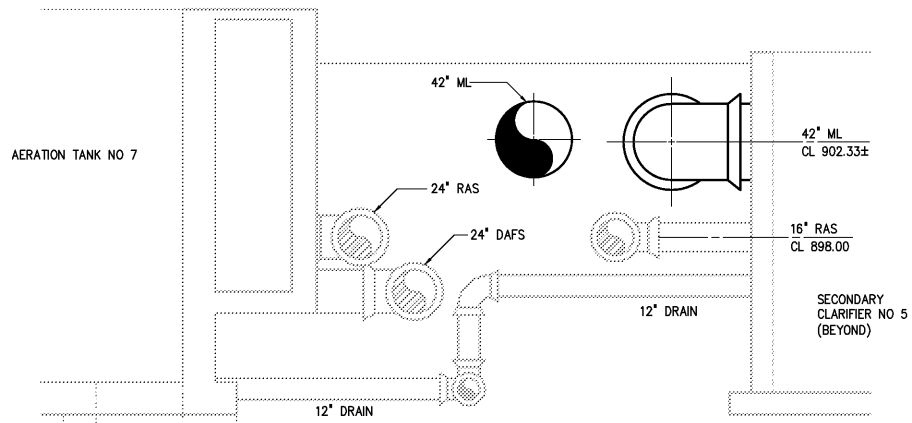
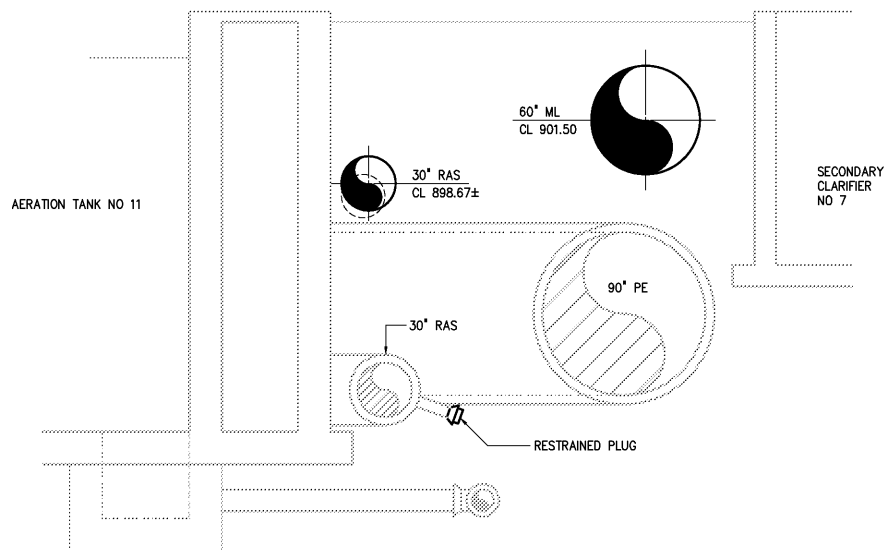


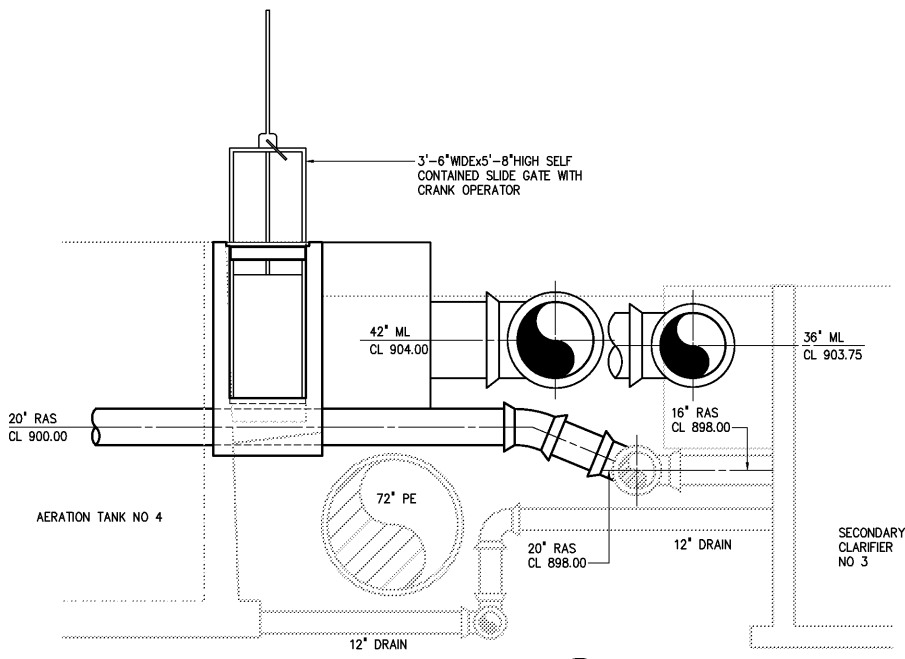
SECTION A  
1/4"=1'-0" M403



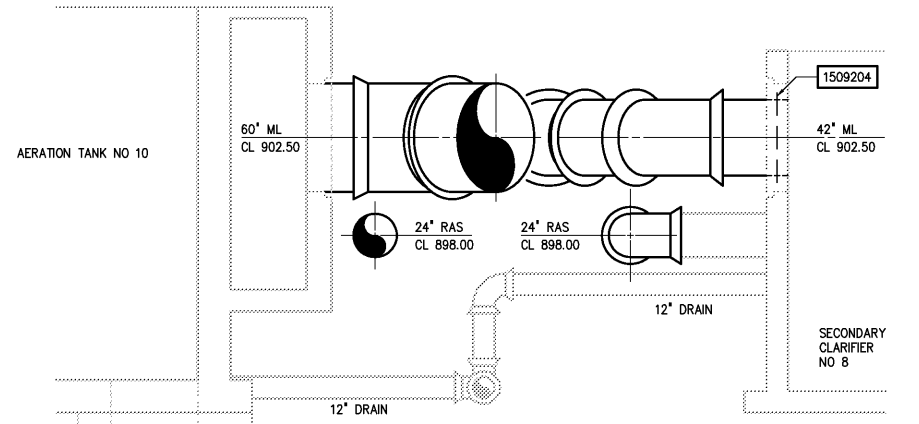
SECTION C  
1/4"=1'-0" M403



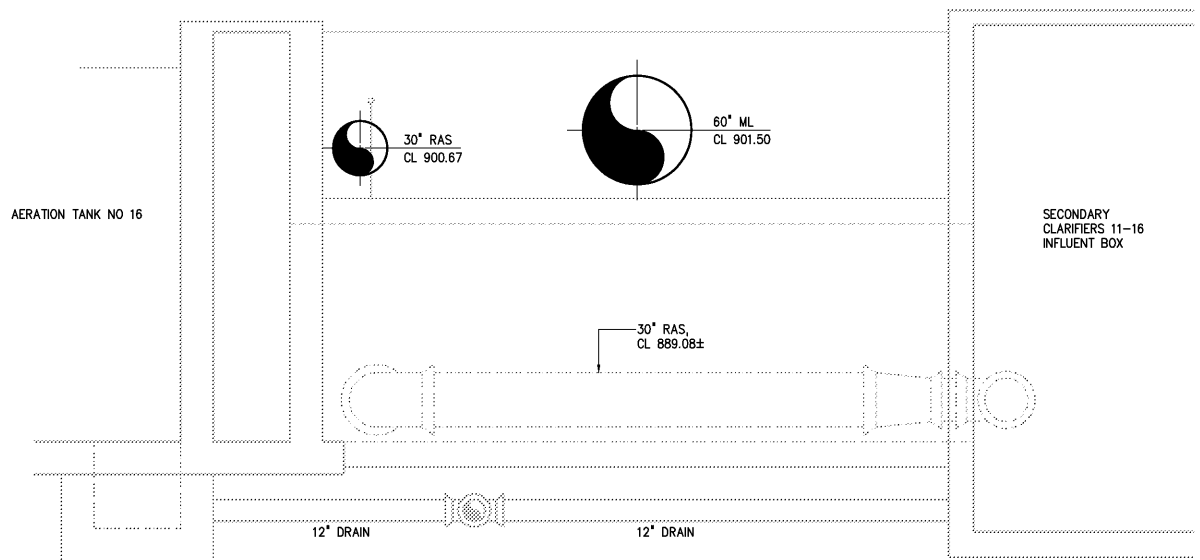
SECTION E  
1/4"=1'-0" M403



SECTION B  
1/4"=1'-0" M403



SECTION D  
1/4"=1'-0" M403



SECTION F  
1/4"=1'-0" M403

				DESIGNED	DAN	RECORD DRAWING	<p>THIS DOCUMENT ORIGINALLY ISSUED FOR CONSTRUCTION AND SEALED BY ROBERT S. DIFIORE, SEAL NO. 22769</p> <p>THIS DRAWING HAS BEEN MODIFIED TO REFLECT FIELD CHANGES REPORTED BY THE CONTRACTOR OR ANOTHER PARTY, BUT NOT VERIFIED BY THE CERTIFYING ENGINEER. THIS DOCUMENT ORIGINALLY ISSUED AND SEALED BY DAVID A. NAILOR, 025465. THIS MEDIA SHALL NOT BE CONSIDERED A CERTIFIED DOCUMENT.</p>	<p><b>Hazen and Sawyer</b> Environmental Engineers &amp; Scientists 4011 WestChase Blvd, Raleigh, North Carolina 27607</p>	CITY OF ROANOKE VIRGINIA	REGIONAL WATER POLLUTION CONTROL PLANT PROCESS TRAIN IMPROVEMENTS	AERATION TANK MODIFICATIONS  MECHANICAL  SECTIONS	THE SCALE BAR SHOWN BELOW MEASURES ONE INCH LONG ON THE ORIGINAL DRAWING.	DATE MARCH 2004	
				DRAWN	RWB								H & S JOB NUMBER	30788B
				CHECKED									CONTRACT NUMBER	DRAWING NUMBER
3	AS BUILT	OCT 2007	RLT	PROJ. ENGR.	DAN								CONTRACT NUMBER	DRAWING NUMBER
2	CONSTRUCTION	MAR 2004	RLT										B	M404
1	REGULATORY APPROVAL	NOV 2003	RLT											
NO.	ISSUED FOR	DATE	BY	APPROVED										