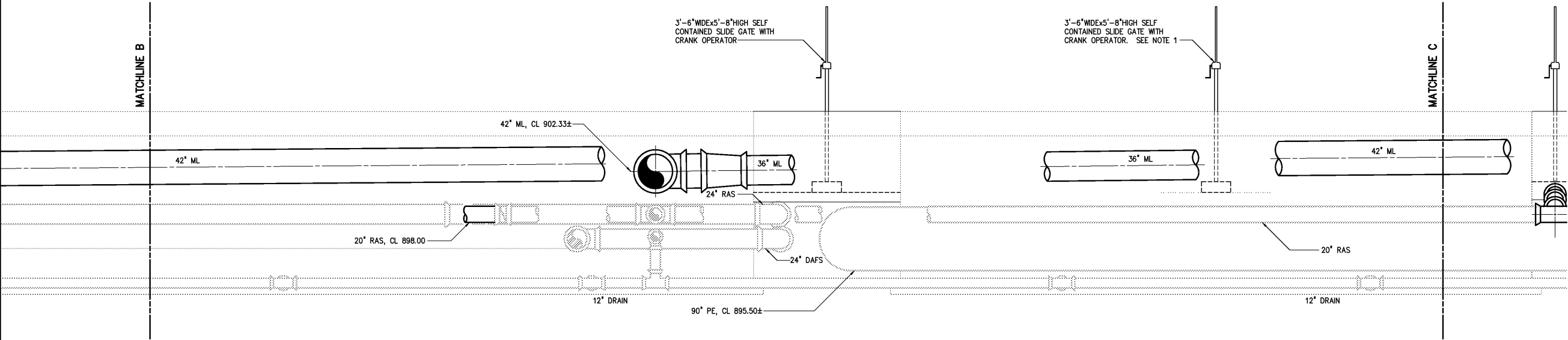
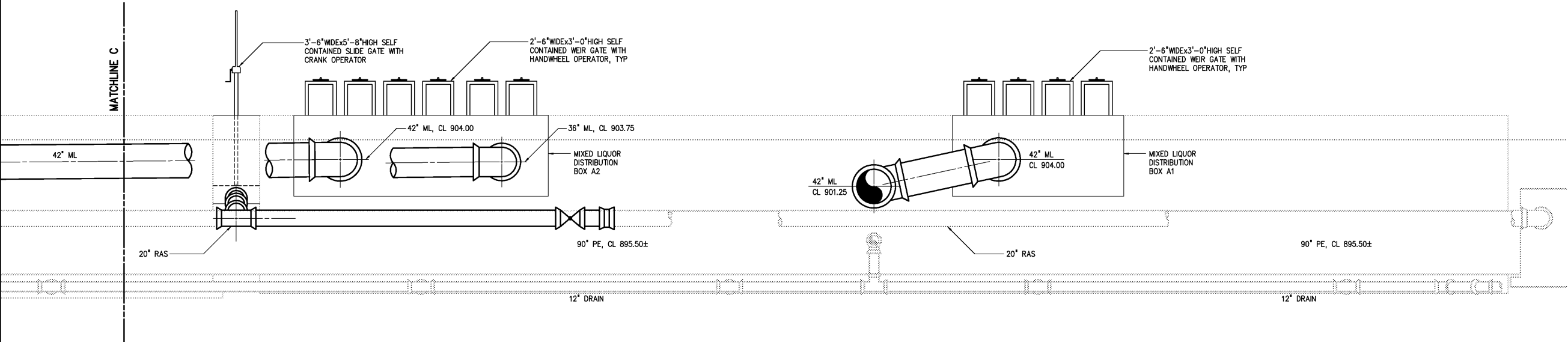


NOTES:
1 CONTRACTOR SHALL FIELD VERIFY CHANNEL DIMENSIONS PRIOR TO ORDERING THIS SLIDE GATE.



SECTION H
3/16"=1'-0" M403



SECTION H
3/16"=1'-0" M403

| | | | | | |
|-----|---------------------|----------|-----|-------------|-----|
| | | | | DESIGNED | DAN |
| | | | | DRAWN | RWB |
| | | | | CHECKED | |
| 3 | AS BUILT | OCT 2007 | RLT | PROJ. ENGR. | DAN |
| 2 | CONSTRUCTION | MAR 2004 | RLT | | |
| 1 | REGULATORY APPROVAL | NOV 2003 | RLT | | |
| NO. | ISSUED FOR | DATE | BY | APPROVED | |

THIS DOCUMENT ORIGINALLY ISSUED FOR CONSTRUCTION AND SEALED BY ROBERT S. DIFIORE, SEAL NO. 22769

RECORD DRAWING

THIS DRAWING HAS BEEN MODIFIED TO REFLECT FIELD CHANGES REPORTED BY THE CONTRACTOR OR ANOTHER PARTY, BUT NOT VERIFIED BY THE CERTIFYING ENGINEER. THIS DOCUMENT ORIGINALLY ISSUED AND SEALED BY DAVID A. NAILOR, 025465. THIS MEDIA SHALL NOT BE CONSIDERED A CERTIFIED DOCUMENT.

THIS DOCUMENT ORIGINALLY ISSUED FOR CONSTRUCTION AND SEALED BY RONALD L. TAYLOR, SEAL NO. 024649

HAZEN AND SAWYER
Environmental Engineers & Scientists
4011 WestChase Blvd, Raleigh, North Carolina 27607

CITY OF ROANOKE
VIRGINIA

REGIONAL WATER POLLUTION CONTROL PLANT
PROCESS TRAIN IMPROVEMENTS

AERATION TANK MODIFICATIONS
MECHANICAL
SECTIONS

THE SCALE BAR SHOWN BELOW MEASURES ONE INCH LONG ON THE ORIGINAL DRAWING.

| | |
|------------------|------------|
| DATE | MARCH 2004 |
| H & S JOB NUMBER | 30788B |
| CONTRACT NUMBER | B |
| DRAWING NUMBER | M406 |