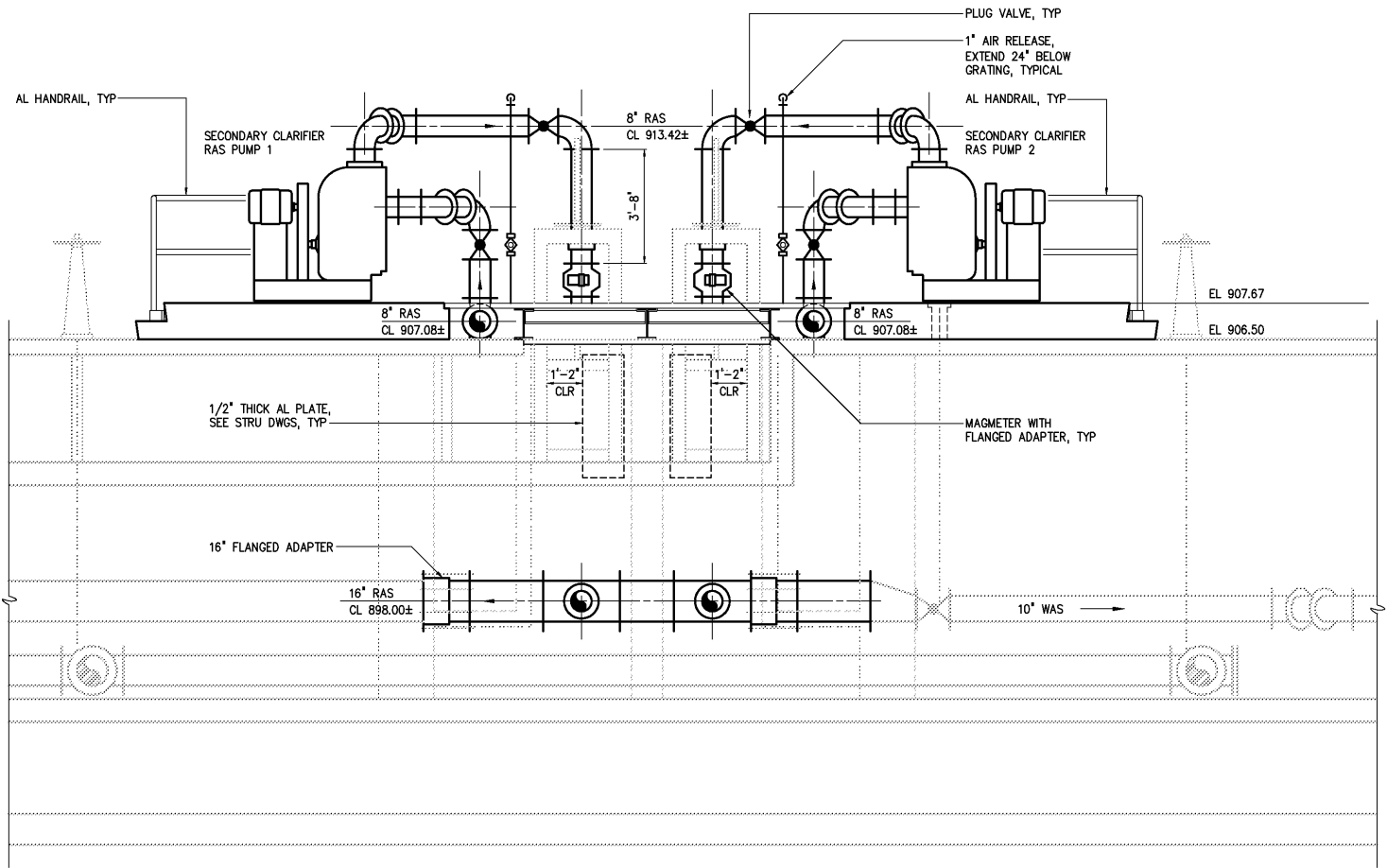
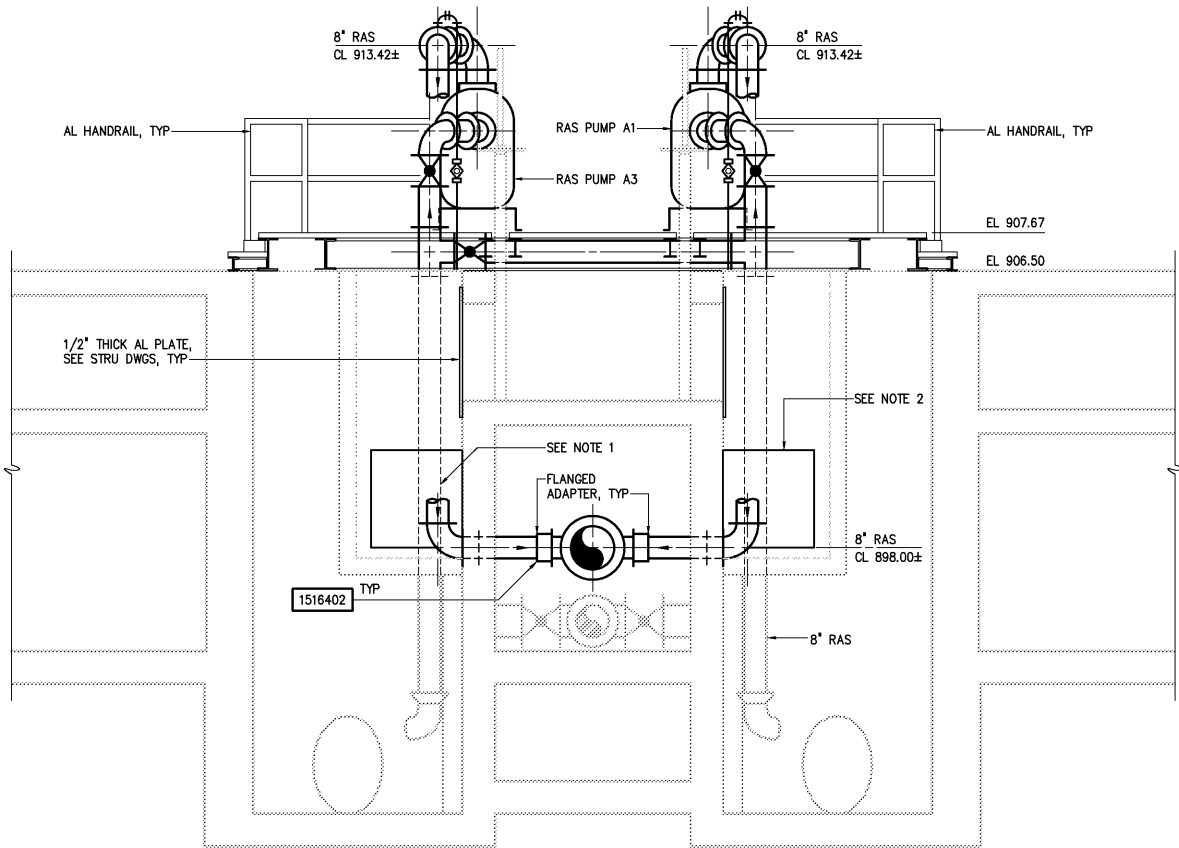


NOTES:

- 1 CONTRACTOR SHALL FURNISH AND INSTALL ALL PIPING AND APPURTENANCES AS REQUIRED TO CONNECT TO EXISTING PIPING.
- 2 CONTRACTOR MAY REMOVE PORTION OF WALL AS REQUIRED FOR PIPING MODIFICATIONS.



SECTION A  
3/8\"=1'-0\" M420



SECTION B  
3/8\"=1'-0\" M420

|     |                     |          |     |             |     |
|-----|---------------------|----------|-----|-------------|-----|
|     |                     |          |     | DESIGNED    | DAN |
|     |                     |          |     | DRAWN       | RWB |
|     |                     |          |     | CHECKED     |     |
| 3   | AS BUILT            | OCT 2007 | RLT | PROJ. ENGR. | DAN |
| 2   | CONSTRUCTION        | MAR 2004 | RLT |             |     |
| 1   | REGULATORY APPROVAL | NOV 2003 | RLT |             |     |
| NO. | ISSUED FOR          | DATE     | BY  | APPROVED    |     |

THIS DOCUMENT ORIGINALLY ISSUED FOR CONSTRUCTION AND SEALED BY ROBERT S. DIFIORE, SEAL NO. 22769

RECORD DRAWING

THIS DRAWING HAS BEEN MODIFIED TO REFLECT FIELD CHANGES REPORTED BY THE CONTRACTOR OR ANOTHER PARTY, BUT NOT VERIFIED BY THE CERTIFYING ENGINEER. THIS DOCUMENT ORIGINALLY ISSUED AND SEALED BY DAVID A. NAILOR, 025465. THIS MEDIA SHALL NOT BE CONSIDERED A CERTIFIED DOCUMENT.

THIS DOCUMENT ORIGINALLY ISSUED FOR CONSTRUCTION AND SEALED BY RONALD L. TAYLOR, SEAL NO. 024649

**HAZEN AND SAWYER**  
Environmental Engineers & Scientists  
4011 WestChase Blvd, Raleigh, North Carolina 27607

CITY OF ROANOKE  
VIRGINIA

REGIONAL WATER POLLUTION CONTROL PLANT  
PROCESS TRAIN IMPROVEMENTS

SECONDARY CLARIFIERS AND RAS PUMPING FACILITIES

MECHANICAL

SECTION - SECONDARY CLARIFIER NOS 1-4

THE SCALE BAR SHOWN BELOW MEASURES ONE INCH LONG ON THE ORIGINAL DRAWING.

DATE MARCH 2004

H & S JOB NUMBER 30788B

CONTRACT NUMBER B  
DRAWING NUMBER M421