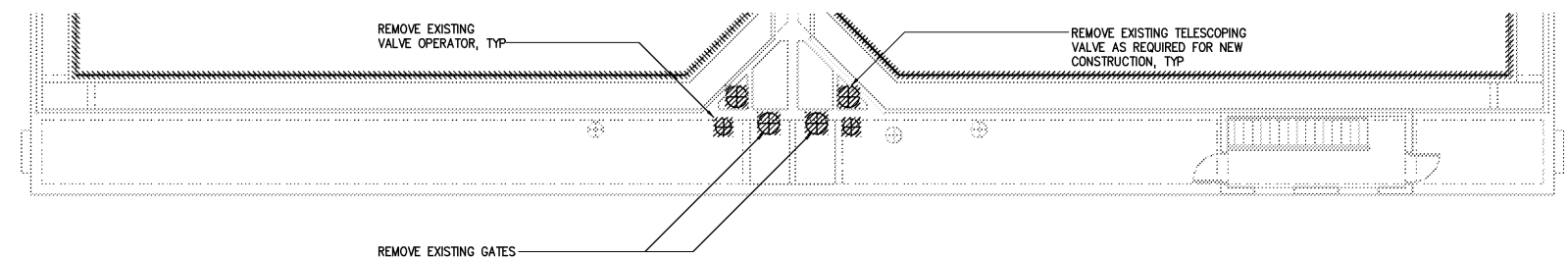


PARTIAL BOTTOM PLAN – DEMOLITION

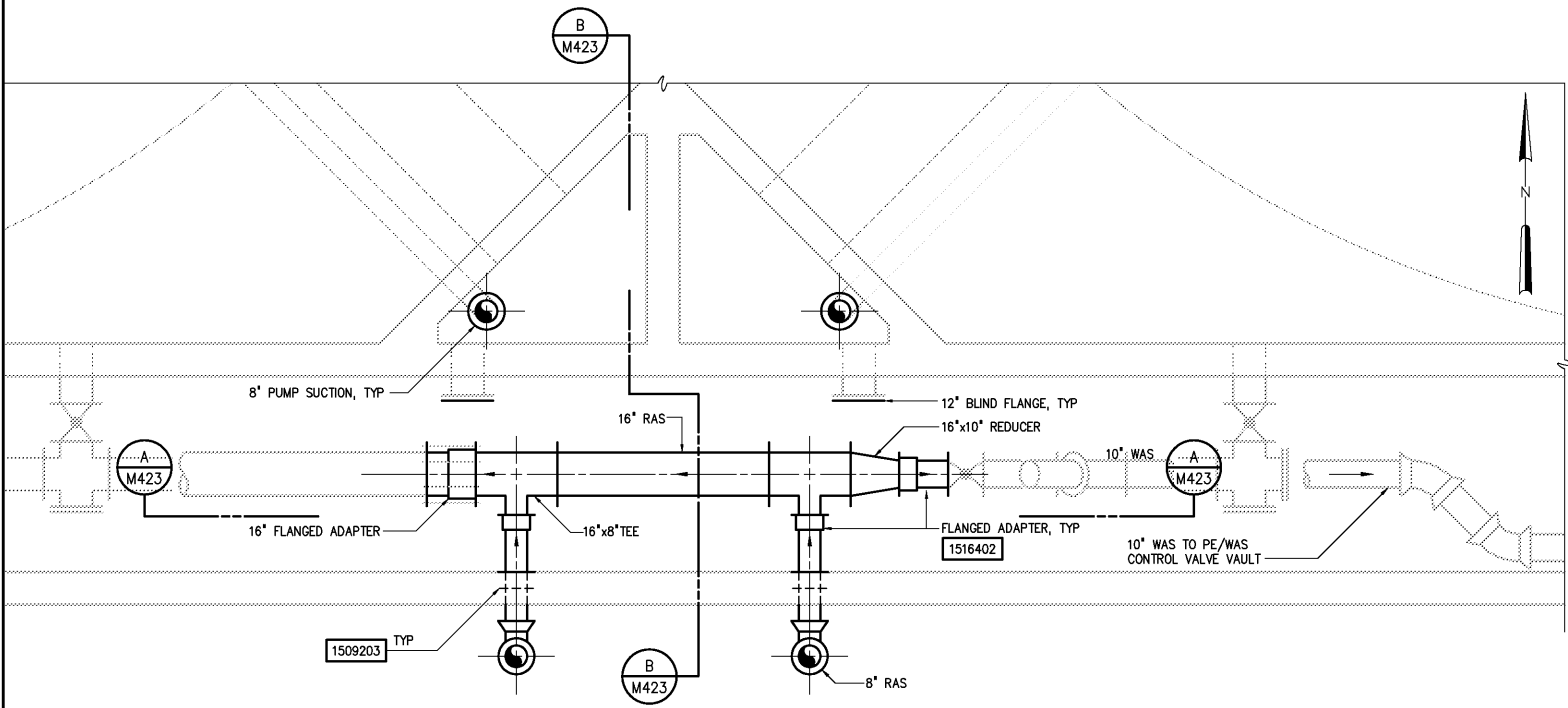
1/8"=1'-0"



PARTIAL TOP PLAN – DEMOLITION

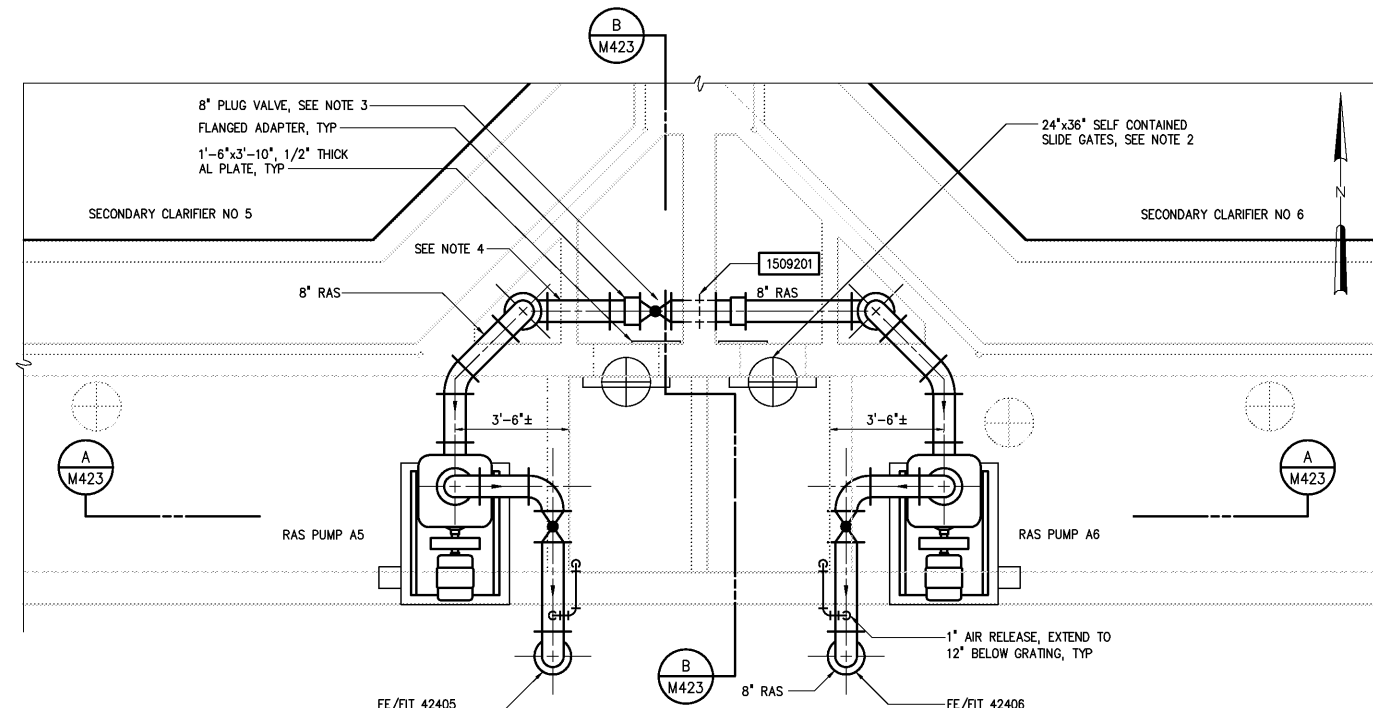
1/8"=1'-0"

- NOTES:
- 1 CONTRACTOR SHALL FURNISH AND INSTALL REDUCERS, PIPING AND APPURTENANCES AS REQUIRED TO CONNECT TO EXISTING PIPING.
  - 2 PROVIDE NEW SLIDE GATES TO REPLACE EXISTING 24"x36" SLIDE GATES (FIELD VERIFY SIZE).
  - 3 ROTATE PLUG VALVE ACTUATOR SO THAT NUT OPERATOR IS BELOW GRATING. PROVIDE OPENING IN GRATING TO OPERATE VALVE.
  - 4 REMOVE PORTION OF EXISTING WALLS AS REQUIRED TO INSTALL 8" RAS, TYPICAL TWO LOCATIONS.
  - 5 WHERE ANCHORING DEVICES AND/OR REINFORCEMENT STEEL REMAIN FOLLOWING DEMOLITION, REMOVE AND/OR BURN BACK REINFORCING STEEL 1 1/2" MINIMUM BELOW SURFACE AND VOIDS CREATED SHALL BE FILLED WITH EPOXY RESIN BINDER.



PARTIAL BOTTOM PLAN

3/8"=1'-0"



PARTIAL TOP PLAN

3/8"=1'-0"

DESIGNED	DAN
DRAWN	RWB
CHECKED	
PROJ. ENGR.	DAN
APPROVED	
NO.	
ISSUED FOR	
DATE	
BY	

THIS DOCUMENT ORIGINALLY ISSUED FOR CONSTRUCTION AND SEALED BY ROBERT S. DIFIORE, SEAL NO. 22769

THIS DOCUMENT ORIGINALLY ISSUED FOR CONSTRUCTION AND SEALED BY RONALD L. TAYLOR, SEAL NO. 024649

RECORD DRAWING

THIS DRAWING HAS BEEN MODIFIED TO REFLECT FIELD CHANGES REPORTED BY THE CONTRACTOR OR ANOTHER PARTY, BUT NOT VERIFIED BY THE CERTIFYING ENGINEER. THIS DOCUMENT ORIGINALLY ISSUED AND SEALED BY DAVID A. NAILOR, 025465. THIS MEDIA SHALL NOT BE CONSIDERED A CERTIFIED DOCUMENT.

**HAZEN AND SAWYER**  
Environmental Engineers & Scientists  
4011 WestChase Blvd, Raleigh, North Carolina 27607

CITY OF ROANOKE  
VIRGINIA

REGIONAL WATER POLLUTION CONTROL PLANT  
PROCESS TRAIN IMPROVEMENTS

SECONDARY CLARIFIERS AND RAS PUMPING FACILITIES

MECHANICAL

PARTIAL PLANS - SECONDARY CLARIFIER NOS 5-6

THE SCALE BAR SHOWN BELOW MEASURES ONE INCH LONG ON THE ORIGINAL DRAWING.	DATE	MARCH 2004
	H & S JOB NUMBER	30788B
	CONTRACT NUMBER	B
	DRAWING NUMBER	M422