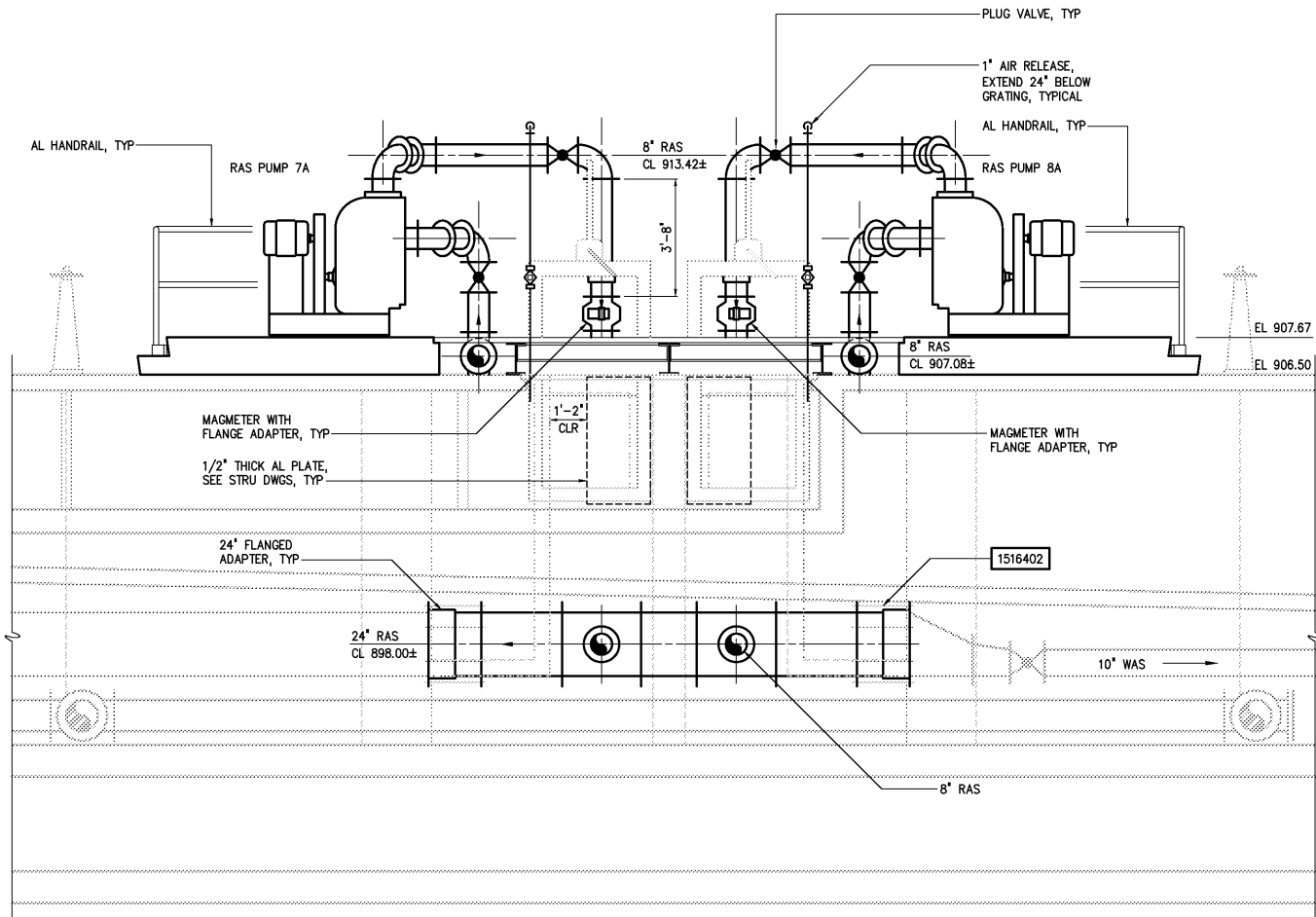
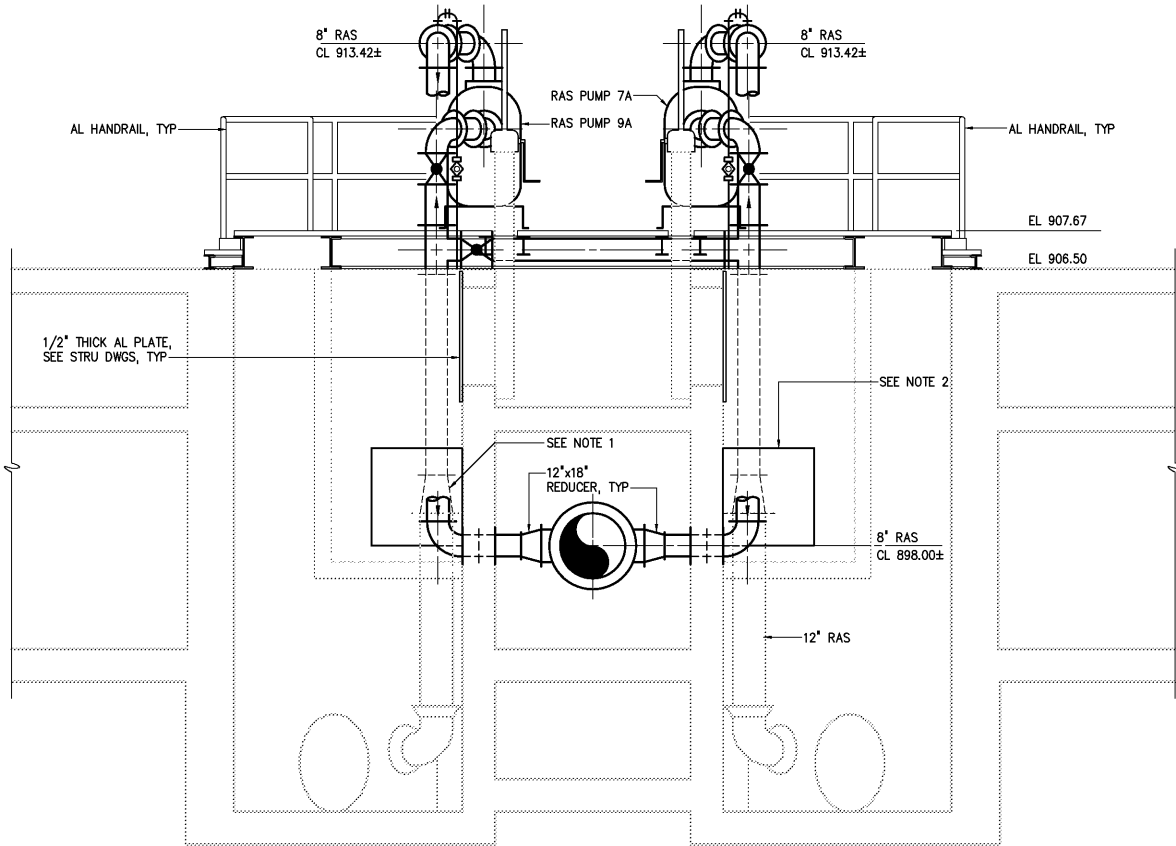


- NOTES:
- 1 CONTRACTOR SHALL FURNISH AND INSTALL ALL PIPING AND APPURTENANCES AS REQUIRED TO CONNECT TO EXISTING PIPING.
  - 2 CONTRACTOR MAY REMOVE PORTION OF WALL AS REQUIRED FOR PIPING MODIFICATIONS.
  - 3 ALL CONCRETE DEMOLITION SHOWN SHALL BE SELECTIVE DEMOLITION BY SAWCUTTING AND CAREFUL REMOVAL OF CONCRETE SHOWN TO BE REMOVED. NO OVER CUTTING OF AREAS TO BE DEMOLISHED SHALL BE PERMITTED. EXPLOSIVES AND VIBRATORY HAMMERS SHALL NOT BE USED FOR DEMOLITION WORK.
  - 4 WHERE ANCHORING DEVICES AND/OR REINFORCEMENT STEEL REMAIN FOLLOWING DEMOLITION, REMOVE AND/OR BURN BACK REINFORCING STEEL 1 1/2" MINIMUM BELOW SURFACE AND VOIDS CREATED SHALL BE FILLED WITH EPOXY RESIN BINDER.
  - 5 CONCRETE SURFACES LEFT EXPOSED FOLLOWING DEMOLITION SHALL BE SEALED WITH EPOXY RESIN COATING SUCH AS SIKAGUARD 62 BY SIKACORPORATION, "DURACOTE 240 BY TAMMS INDUSTRIES, OR APPROVED EQUAL.



SECTION A  
3/8"=1'-0" M424



SECTION B  
3/8"=1'-0" M424

|     |                     |          |     |                        |                |  |   |  |                             |  |   |   |                                |
|-----|---------------------|----------|-----|------------------------|----------------|--|---|--|-----------------------------|--|---|---|--------------------------------|
|     |                     |          |     | DESIGNED <u>DAN</u>    | RECORD DRAWING | THIS DOCUMENT ORIGINALLY ISSUED FOR CONSTRUCTION AND SEALED BY ROBERT S. DIFIORE, SEAL NO. 22769 | THIS DRAWING HAS BEEN MODIFIED TO REFLECT FIELD CHANGES REPORTED BY THE CONTRACTOR OR ANOTHER PARTY, BUT NOT VERIFIED BY THE CERTIFYING ENGINEER. THIS DOCUMENT ORIGINALLY ISSUED AND SEALED BY DAVID A. NAILOR, 025465. THIS MEDIA SHALL NOT BE CONSIDERED A CERTIFIED DOCUMENT. | HAZEN AND SAWYER<br>Environmental Engineers & Scientists<br>4011 WestChase Blvd, Raleigh, North Carolina 27607 | CITY OF ROANOKE<br>VIRGINIA | REGIONAL WATER POLLUTION CONTROL PLANT<br>PROCESS TRAIN IMPROVEMENTS | SECONDARY CLARIFIERS AND RAS PUMPING FACILITIES<br><br>MECHANICAL<br>SECTION - SECONDARY CLARIFIER NOS 7-10 | THE SCALE BAR SHOWN BELOW MEASURES ONE INCH LONG ON THE ORIGINAL DRAWING. | DATE <u>MARCH 2004</u>         |
|     |                     |          |     | DRAWN <u>RWB</u>       |                |  |   |  |                             |  |   |   | H & S JOB NUMBER <u>30788B</u> |
|     |                     |          |     | CHECKED                |                |  |   |  |                             |  |   |   | CONTRACT NUMBER <u>B</u>       |
| 3   | AS BUILT            | OCT 2007 | RLT | PROJ. ENGR. <u>DAN</u> | APPROVED       | THIS DOCUMENT ORIGINALLY ISSUED FOR CONSTRUCTION AND SEALED BY RONALD L. TAYLOR, SEAL NO. 024649 |   |  |                             |  |   |   | DRAWING NUMBER <u>M425</u>     |
| 2   | CONSTRUCTION        | MAR 2004 | RLT |                        |                |  |   |  |                             |  |   |   |                                |
| 1   | REGULATORY APPROVAL | NOV 2003 | RLT |                        |                |  |   |  |                             |  |   |   |                                |
| NO. | ISSUED FOR          | DATE     | BY  |                        |                |  |   |  |                             |  |   |   |                                |