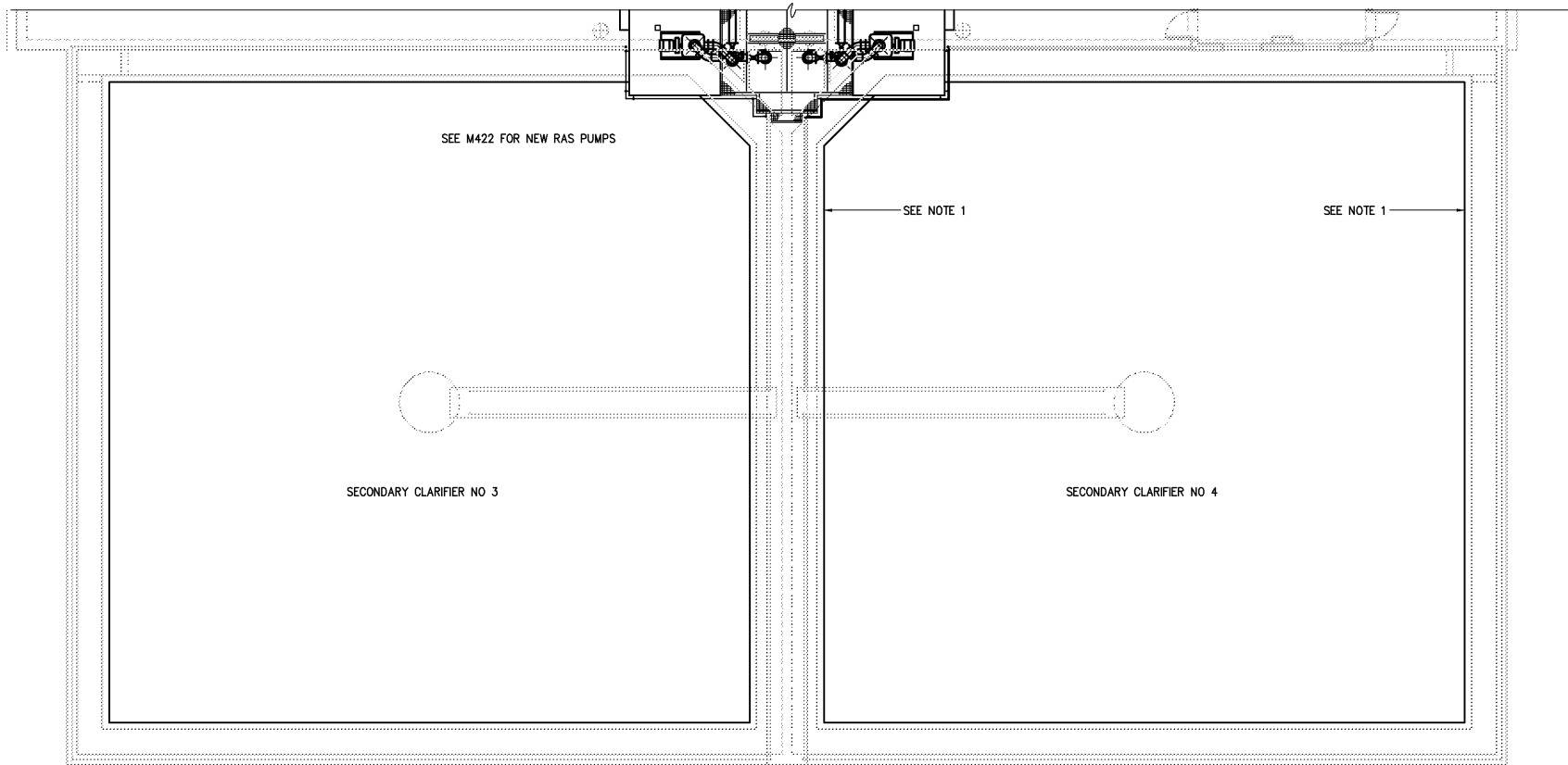


TOP PLAN – DEMOLITION

1/16"=1'-0"

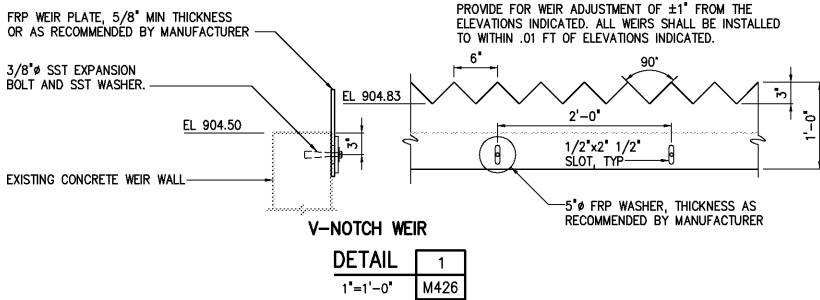


TOP PLAN

1/8"=1'-0"

NOTES:

- 1 REPLACE EXISTING WEIRS ON SECONDARY CLARIFIERS 1-6. CONTRACTOR MAY REUSE SST WEIR PLATE REMOVED FROM SECONDARY CLARIFIERS 11-16 (SEE M460 SERIES) OR SUPPLY NEW FRP WEIR. SEE DETAIL 1/M426.



NO.	ISSUED FOR	DATE	BY	DESIGNED	DAN	RECORD DRAWING	THIS DOCUMENT ORIGINALLY ISSUED FOR CONSTRUCTION AND SEALED BY ROBERT S. DIFIORE, SEAL NO. 22769	THIS DRAWING HAS BEEN MODIFIED TO REFLECT FIELD CHANGES REPORTED BY THE CONTRACTOR OR ANOTHER PARTY, BUT NOT VERIFIED BY THE CERTIFYING ENGINEER. THIS DOCUMENT ORIGINALLY ISSUED AND SEALED BY DAVID A. NAILOR, 025465. THIS MEDIA SHALL NOT BE CONSIDERED A CERTIFIED DOCUMENT.	HAZEN AND SAWYER Environmental Engineers & Scientists 4011 WestChase Blvd, Raleigh, North Carolina 27607	CITY OF ROANOKE VIRGINIA REGIONAL WATER POLLUTION CONTROL PLANT PROCESS TRAIN IMPROVEMENTS	SECONDARY CLARIFIERS AND RAS PUMPING FACILITIES MECHANICAL SECONDARY CLARIFIER NOS 1-10	THE SCALE BAR SHOWN BELOW MEASURES ONE INCH LONG ON THE ORIGINAL DRAWING.	DATE MARCH 2004 H & S JOB NUMBER 30788B CONTRACT NUMBER B DRAWING NUMBER M426
				DRAWN	RWB/BRC								
				CHECKED									
				PROJ. ENGR.	DAN								
3	AS BUILT	OCT 2007	RLT	PROJ. ENGR.	DAN	RECORD DRAWING	THIS DOCUMENT ORIGINALLY ISSUED FOR CONSTRUCTION AND SEALED BY ROBERT S. DIFIORE, SEAL NO. 22769	THIS DRAWING HAS BEEN MODIFIED TO REFLECT FIELD CHANGES REPORTED BY THE CONTRACTOR OR ANOTHER PARTY, BUT NOT VERIFIED BY THE CERTIFYING ENGINEER. THIS DOCUMENT ORIGINALLY ISSUED AND SEALED BY DAVID A. NAILOR, 025465. THIS MEDIA SHALL NOT BE CONSIDERED A CERTIFIED DOCUMENT.	HAZEN AND SAWYER Environmental Engineers & Scientists 4011 WestChase Blvd, Raleigh, North Carolina 27607	CITY OF ROANOKE VIRGINIA REGIONAL WATER POLLUTION CONTROL PLANT PROCESS TRAIN IMPROVEMENTS	SECONDARY CLARIFIERS AND RAS PUMPING FACILITIES MECHANICAL SECONDARY CLARIFIER NOS 1-10	THE SCALE BAR SHOWN BELOW MEASURES ONE INCH LONG ON THE ORIGINAL DRAWING.	DATE MARCH 2004 H & S JOB NUMBER 30788B CONTRACT NUMBER B DRAWING NUMBER M426
2	CONSTRUCTION	MAR 2004	RLT	PROJ. ENGR.	DAN								
1	REGULATORY APPROVAL	NOV 2003	RLT	PROJ. ENGR.	DAN								
NO.	ISSUED FOR	DATE	BY	PROJ. ENGR.	DAN								