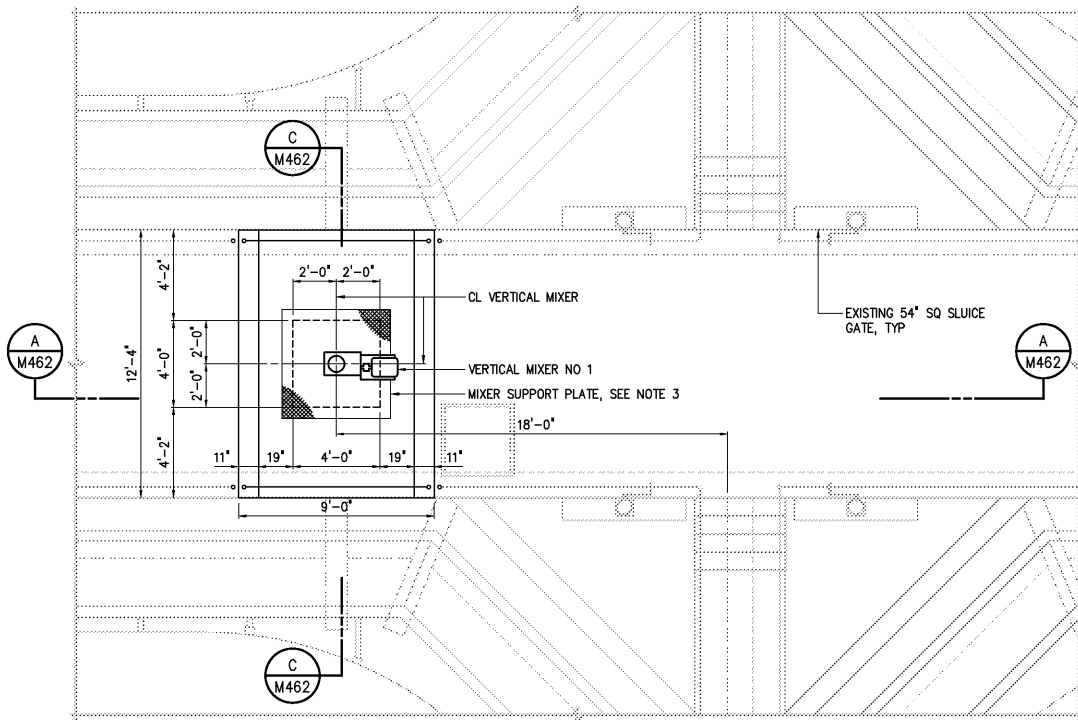
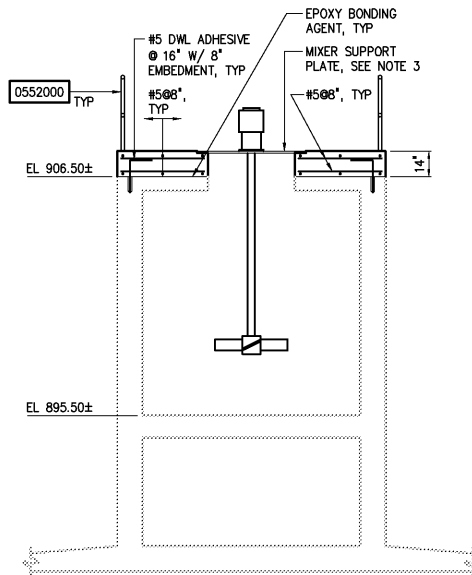


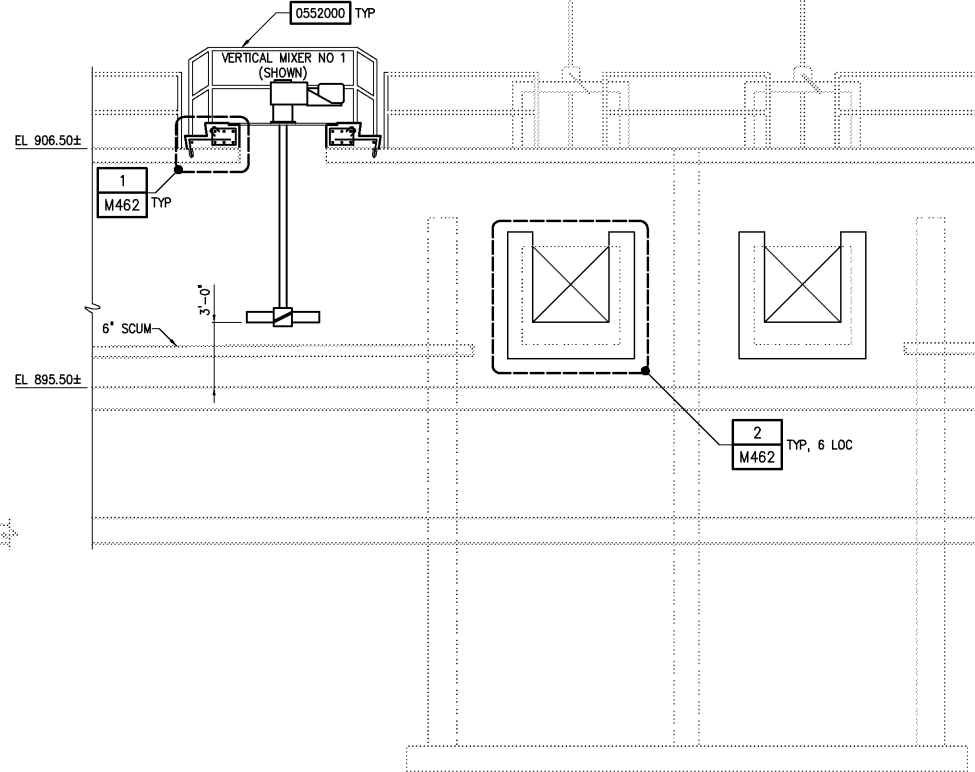
PARTIAL BOTTOM PLAN
1/4"=1'-0"



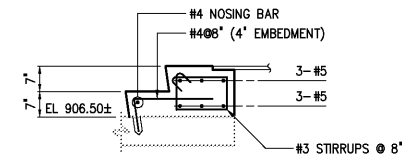
PARTIAL TOP PLAN
1/4"=1'-0"



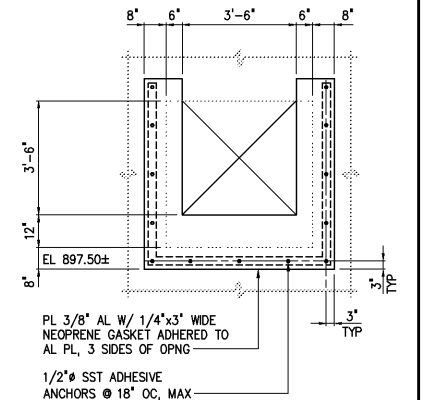
SECTION C
1/4"=1'-0" M460



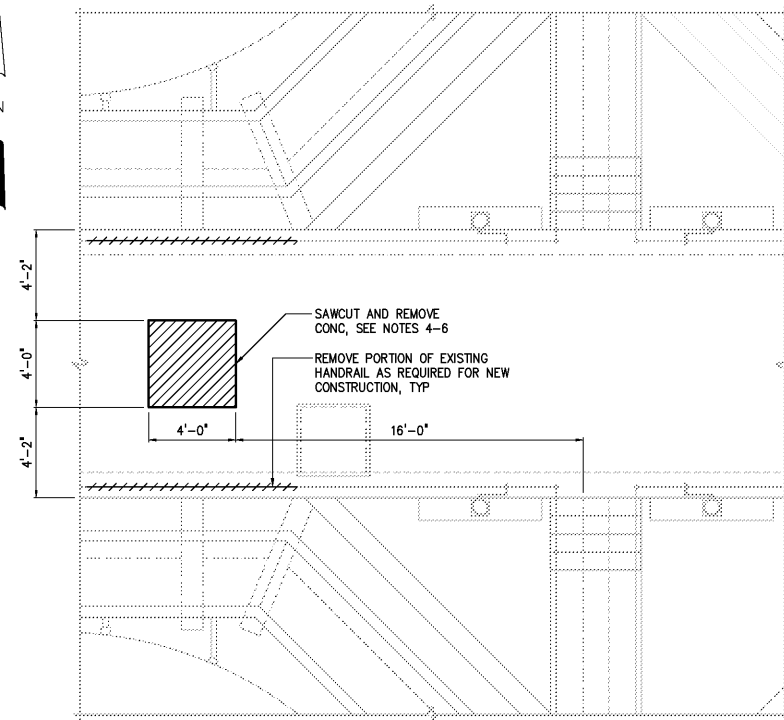
SECTION A
1/4"=1'-0" M460



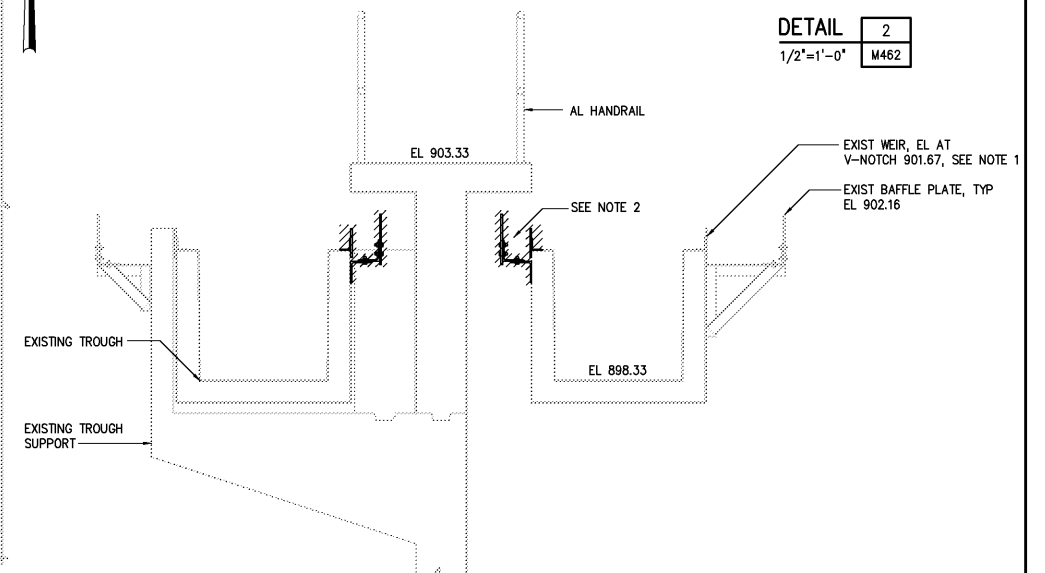
DETAIL 1
1/2"=1'-0" M462



DETAIL 2
1/2"=1'-0" M462



PARTIAL TOP PLAN - DEMOLITION
1/4"=1'-0"



SECTION B
1/2"=1'-0" M460

NOTES:

- WEIRS ON INBOARD SIDE OF TROUGHS FOR CLARIFIERS NO 11-16 SHALL BE LEVELED.
- WEIRS AND SCUM BAFFLE ON OUTBOARD SIDE OF TROUGH SHALL BE REMOVED AND REPLACED WITH FRP PLATE EXTENDING TO ELEV 902.25. FASTENING OF FRP PLATE SHALL BE SIMILAR TO DETAIL 5, S483.
- MIXER DRIVE SUPPORT PLATES SHALL BE DESIGNED BY MANUFACTURER OF EQUIPMENT. MANUFACTURER SHALL SUBMIT DESIGN DRAWINGS AND CALCULATIONS SEALED BY A PROFESSIONAL ENGINEER CURRENTLY REGISTERED IN THE STATE OF VIRGINIA. DRAWINGS AND CALCULATIONS SHALL BE SUBMITTED WITH SHOP DRAWINGS FOR ASSOCIATED EQUIPMENT. PLATES SHALL BE FABRICATED FROM EITHER ALUMINUM ALLOY 6061-T6 OR TYPE 316 STAINLESS STEEL.
- DEMOLITION SHALL BE SELECTIVE DEMOLITION BY SAW CUTTING OR CONCRETE CORING AND CAREFUL REMOVAL OF CONCRETE. NO VIBRATORY EQUIPMENT SHALL BE USED FOR CONCRETE DEMOLITION WORK.
- OVERCUTTING OF AREAS TO BE DEMOLISHED SHALL NOT BE PERMITTED UNDER ANY CIRCUMSTANCES.
- ALL REINFORCEMENT AND OTHER EMBEDMENTS EXPOSED DURING DEMOLITION WORK SHALL BE BURNED BACK 1/2" MINIMUM BELOW CONCRETE SURFACE. RESULTING VOID SHALL BE PATCHED FLUSH WITH APPROVED EPOXY RESIN BINDER.

| | | | | | |
|-----|---------------------|----------|-----|-------------|-------|
| 3 | AS BUILT | OCT 2007 | RLT | DESIGNED | DAN |
| 2 | CONSTRUCTION | MAR 2004 | RLT | DRAWN | BRC |
| 1 | REGULATORY APPROVAL | NOV 2003 | RLT | CHECKED | |
| NO. | ISSUED FOR | DATE | BY | PROJ. ENGR. | H & S |
| | | | | APPROVED | |

THIS DOCUMENT ORIGINALLY ISSUED FOR CONSTRUCTION AND SEALED BY ROBERT S. DIFIORE, SEAL NO. 22769

THIS DOCUMENT ORIGINALLY ISSUED FOR CONSTRUCTION AND SEALED BY RONALD L. TAYLOR, SEAL NO. 024649

RECORD DRAWING

THIS DRAWING HAS BEEN MODIFIED TO REFLECT FIELD CHANGES REPORTED BY THE CONTRACTOR OR ANOTHER PARTY, BUT NOT VERIFIED BY THE CERTIFYING ENGINEER. THIS DOCUMENT ORIGINALLY ISSUED AND SEALED BY DAVID A. NAILO, 025465. THIS MEDIA SHALL NOT BE CONSIDERED A CERTIFIED DOCUMENT.

HAZEN AND SAWYER
Environmental Engineers & Scientists
4011 WestChase Blvd, Raleigh, North Carolina 27607

CITY OF ROANOKE
VIRGINIA
REGIONAL WATER POLLUTION CONTROL PLANT
PROCESS TRAIN IMPROVEMENTS

SECONDARY CLARIFIERS NO 11-16 MODIFICATIONS
MECHANICAL
PARTIAL PLANS, SECTIONS AND DETAILS

| | | |
|---|-----------------|----------------|
| THE SCALE BAR SHOWN BELOW MEASURES ONE INCH LONG ON THE ORIGINAL DRAWING. | DATE | MARCH 2004 |
| H & S JOB NUMBER | CONTRACT NUMBER | DRAWING NUMBER |
| 30788B | B | M462 |