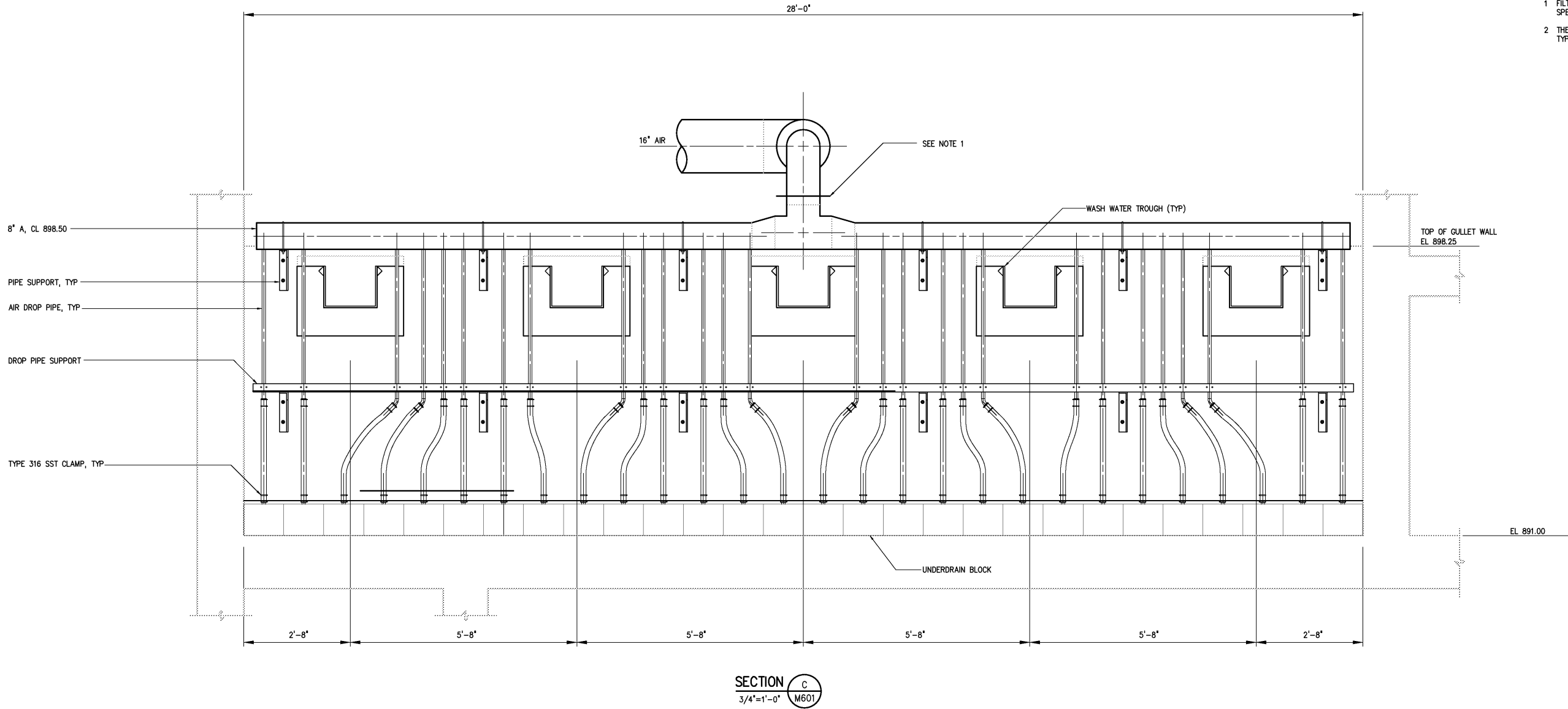


- NOTES:
- 1 FILTER EQUIPMENT CONNECTION POINT. SEE SPECIFICATION 11500.
- 2 THE AIR DROP PIPING SHOWN IN SECTION C IS TYPICAL OF BOTH CELLS IN FILTER NOS. 1-8.



				DESIGNED	MAF	RECORD DRAWING	HAZEN AND SAWYER Environmental Engineers & Scientists 4011 WestChase Blvd, Raleigh, North Carolina 27607	CITY OF ROANOKE VIRGINIA	EFFLUENT FILTER MODIFICATIONS	MECHANICAL SECTION	THE SCALE BAR SHOWN BELOW MEASURES ONE INCH LONG ON THE ORIGINAL DRAWING.	DATE	MARCH 2004	
				DRAWN	RWB							H & S JOB NUMBER	30788B	
				CHECKED								CONTRACT NUMBER	DRAWING NUMBER	
3	AS BUILT	OCT 2007	RLT	PROJ. ENGR.	DAN	THIS DRAWING HAS BEEN MODIFIED TO REFLECT FIELD CHANGES REPORTED BY THE CONTRACTOR OR ANOTHER PARTY, BUT NOT VERIFIED BY THE CERTIFYING ENGINEER. THIS DOCUMENT ORIGINALLY ISSUED AND SEALED BY DAVID A. NAILOR, 025465. THIS MEDIA SHALL NOT BE CONSIDERED A CERTIFIED DOCUMENT.								
2	CONSTRUCTION	MAR 2004	RLT											
1	REGULATORY APPROVAL	NOV 2003	RLT											
NO.	ISSUED FOR	DATE	BY	APPROVED	THIS DOCUMENT ORIGINALLY ISSUED FOR CONSTRUCTION AND SEALED BY RONALD L. TAYLOR, SEAL NO. 024649									