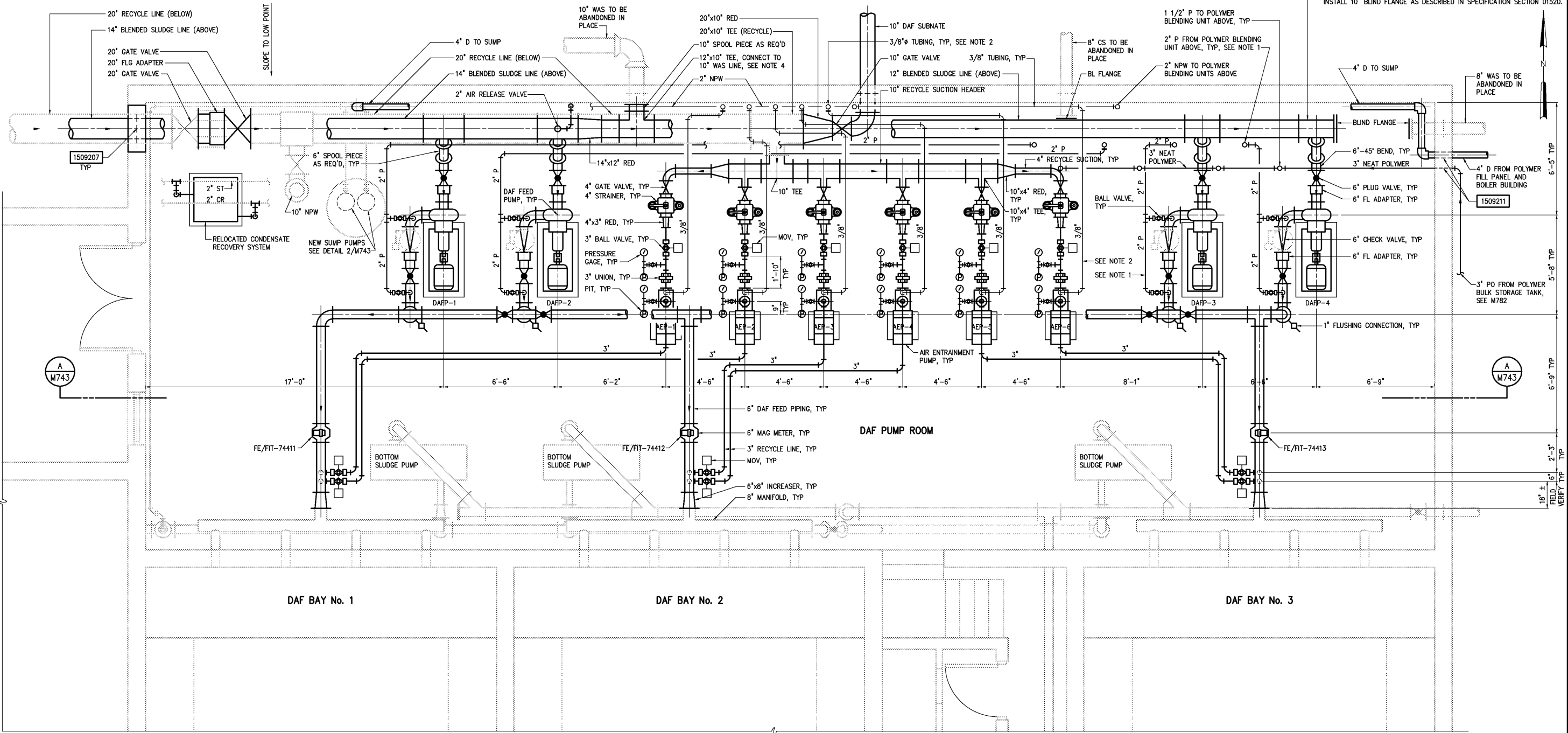


- NOTES:
- 2" POLYMER (P) SOLUTION LINE IS TAPPED INTO THE 6" DAF FEED LINE IN TWO (2) LOCATIONS AS SHOWN, TYPICAL FOR FOUR PUMPS
  - 3/8" TYPE 304 STAINLESS STEEL TUBING FROM ROTA-METER ABOVE, TYP
  - DUPLEX BASKET STRAINER SHALL BE BALL TYPE DESIGN, HAYWARD MODEL 53BTX, OR EQUAL, CARBON STEEL BODY AND CARTRIDGE, ANSI 150 LB. FLANGED CONNECTION, PTFE/BUNA N SEAT AND SEAL, STAINLESS STEEL DIVERTER BALLS. STRAINER BASKET SHALL BE 316 STAINLESS STEEL WITH 3/32" DIAMETER PERFORATIONS.
  - CONTRACTOR TO DISCONNECT NEW 12" BLENDED SLUDGE LINE FROM EXISTING 10" WAS LINE BY REMOVING 10" SPOOL PIECE AND INSTALLING BLIND FLANGE ON 10" WAS LINE. ROTATE NEW 12"x10" TEE 90° WITH 10" BRANCH UP AND INSTALL 10" BLIND FLANGE AS DESCRIBED IN SPECIFICATION SECTION 01520.



BOTTOM PLAN - PUMP ROOM  
3/8"=1'-0"

DAF Air Entrainment System Instrumentation and Control Schedule				
PUMP No.	SUCTION MOV	DISCHARGE MOV	SUCTION PIT	DISCHARGE PIT
AEP-01	MOV-74211	MOV-74201	PIT-74441	PIT-74431
AEP-02	MOV-74212	MOV-74202	PIT-74442	PIT-74432
AEP-03	MOV-74213	MOV-74203	PIT-74443	PIT-74433
AEP-04	MOV-74214	MOV-74204	PIT-74444	PIT-74434
AEP-05	MOV-74215	MOV-74205	PIT-74445	PIT-74435
AEP-06	MOV-74216	MOV-74206	PIT-74446	PIT-74436

				DESIGNED	CMB/DAN
				DRAWN	BRC
				CHECKED	
3	AS BUILT	OCT 2007	RLT	PROJ. ENGR.	H & S
2	CONSTRUCTION	MAR 2004	RLT		
1	REGULATORY APPROVAL	NOV 2003	RLT		
NO.	ISSUED FOR	DATE	BY	APPROVED	

THIS DOCUMENT ORIGINALLY ISSUED FOR CONSTRUCTION AND SEALED BY ROBERT S. DIFIORE, SEAL NO. 22769

RECORD DRAWING

THIS DRAWING HAS BEEN MODIFIED TO REFLECT FIELD CHANGES REPORTED BY THE CONTRACTOR OR ANOTHER PARTY, BUT NOT VERIFIED BY THE CERTIFYING ENGINEER. THIS DOCUMENT ORIGINALLY ISSUED AND SEALED BY CHARLES M. BULLARD, SEAL NUMBER 036668. THIS MEDIA SHALL NOT BE CONSIDERED A CERTIFIED DOCUMENT.

THIS DOCUMENT ORIGINALLY ISSUED FOR CONSTRUCTION AND SEALED BY RONALD L. TAYLOR, SEAL NO. 024649

**HAZEN AND SAWYER**  
Environmental Engineers & Scientists  
4011 WestChase Blvd, Raleigh, North Carolina 27607

CITY OF ROANOKE  
VIRGINIA  
REGIONAL WATER POLLUTION CONTROL PLANT  
PROCESS TRAIN IMPROVEMENTS

DAF THICKENER BUILDING MODIFICATIONS  
MECHANICAL  
BOTTOM PLAN

THE SCALE BAR SHOWN BELOW MEASURES ONE INCH LONG ON THE ORIGINAL DRAWING.	DATE	MARCH 2004
	H & S JOB NUMBER	30788B
	CONTRACT NUMBER	B
	DRAWING NUMBER	M741