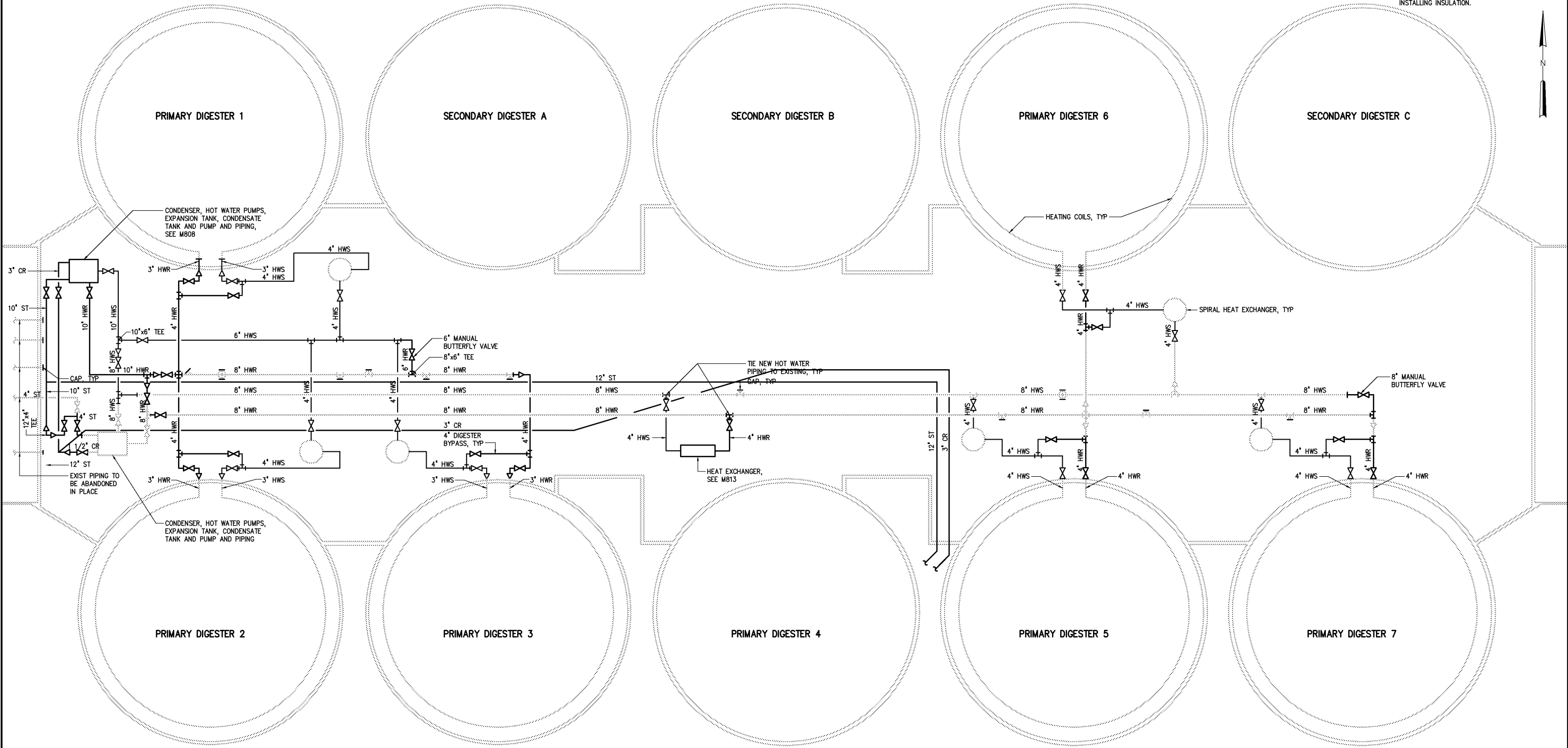
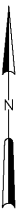


NOTES:  
1 CONTRACTOR SHALL INSULATE EXISTING HOT WATER SUPPLY (HWS) AND HOT WATER RETURN (HWR) PIPING WHICH REMAINS IN SERVICE FOLLOWING UPGRADES. INSULATION SHALL BE INSTALLED IN ACCORDANCE WITH SPECIFICATION SECTION 15290. CONTRACTOR SHALL CLEAN AND TOUCH-UP PAINT EXISTING PIPING PRIOR TO INSTALLING INSULATION.



HOT WATER SCHEMATIC  
NOT TO SCALE

PIPE LEGEND	
CR	CONDENSATE RETURN
HWS	HOT WATER SUPPLY
HWR	HOT WATER RETURN
ST	STEAM
— NEW PIPING OR EQUIPMENT	
--- EXISTING PIPING OR EQUIPMENT	

				DESIGNED	CMB/HGM
				DRAWN	HGM
				CHECKED	
3	AS BUILT	OCT 2007	RLT	PROJ. ENGR.	DAN
2	CONSTRUCTION	MAR 2004	RLT		
1	REGULATORY APPROVAL	NOV 2003	RLT		
NO.	ISSUED FOR	DATE	BY	APPROVED	

THIS DOCUMENT ORIGINALLY ISSUED FOR CONSTRUCTION AND SEALED BY ROBERT S. DIFIORE, SEAL NO. 22769

RECORD DRAWING

THIS DRAWING HAS BEEN MODIFIED TO REFLECT FIELD CHANGES REPORTED BY THE CONTRACTOR OR ANOTHER PARTY, BUT NOT VERIFIED BY THE CERTIFYING ENGINEER. THIS DOCUMENT ORIGINALLY ISSUED AND SEALED BY CHARLES M. BULLARD, SEAL NUMBER 036668. THIS MEDIA SHALL NOT BE CONSIDERED A CERTIFIED DOCUMENT.

THIS DOCUMENT ORIGINALLY ISSUED FOR CONSTRUCTION AND SEALED BY RONALD L. TAYLOR, SEAL NO. 024649

**HAZEN AND SAWYER**  
Environmental Engineers & Scientists  
4011 WestChase Blvd, Raleigh, North Carolina 27607

CITY OF ROANOKE  
VIRGINIA  
REGIONAL WATER POLLUTION CONTROL PLANT  
PROCESS TRAIN IMPROVEMENTS

DIGESTER MODIFICATIONS  
MECHANICAL  
HOT WATER SCHEMATIC

THE SCALE BAR SHOWN BELOW MEASURES ONE INCH LONG ON THE ORIGINAL DRAWING.	DATE	MARCH 2004
	H & S JOB NUMBER	30788B
	CONTRACT NUMBER	B
	DRAWING NUMBER	M803