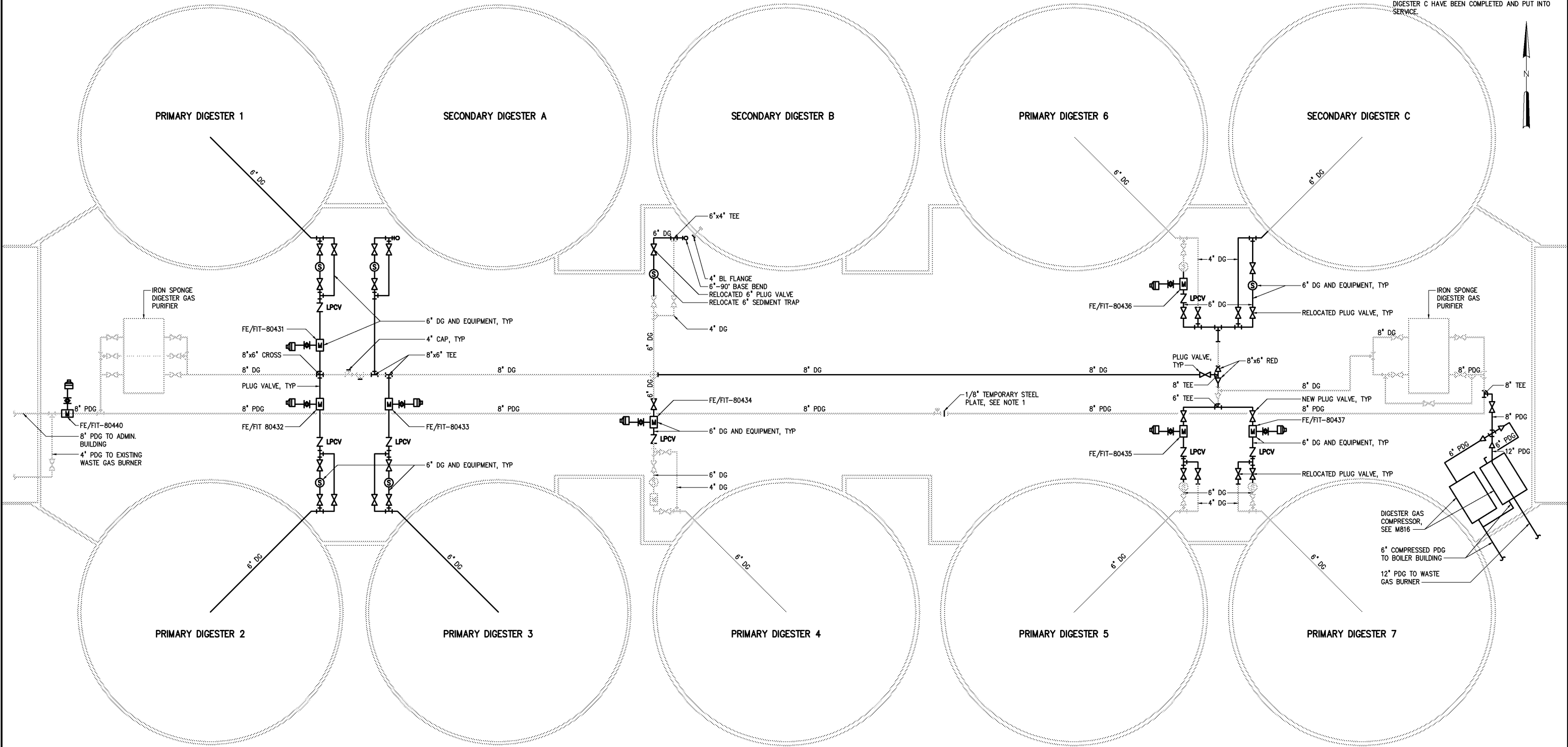


NOTES:  
1 INSERT 1/8" THICK TEMPORARY STEEL PLATE BETWEEN EXISTING 8" FLANGES. BOLT-HOLE PATTERN SHALL MATCH EXISTING FLANGES. INSTALL NEW GASKET ON EXISTING 8" TEE FLANGE. REMOVE STEEL PLATE AND RECONNECT EXISTING FLANGES INCLUDING NEW GASKET AFTER THE DIGESTER GAS SYSTEM MODIFICATIONS FOR PRIMARY DIGESTERS No. 5, 6 AND 7 AND SECONDARY DIGESTER C HAVE BEEN COMPLETED AND PUT INTO SERVICE.



DIGESTER GAS SCHEMATIC  
NOT TO SCALE

- PIPE LEGEND
- DG DIGESTER GAS
  - DGP PURIFIED DIGESTER GAS
  - M GAS METER
  - S SEDIMENT TRAP
  - LPCV LOW PRESSURE CHECK VALVE

— NEW PIPING OR EQUIPMENT  
--- EXISTING PIPING OR EQUIPMENT TO REMAIN

				DESIGNED	CMB/HGM
				DRAWN	HGM
				CHECKED	
3	AS BUILT	OCT 2007	RLT	PROJ. ENGR.	DAN
2	CONSTRUCTION	MAR 2004	RLT		
1	REGULATORY APPROVAL	NOV 2003	RLT		
NO.	ISSUED FOR	DATE	BY	APPROVED	

THIS DOCUMENT ORIGINALLY ISSUED FOR CONSTRUCTION AND SEALED BY ROBERT S. DIFIORE, SEAL NO. 22769

RECORD DRAWING

THIS DRAWING HAS BEEN MODIFIED TO REFLECT FIELD CHANGES REPORTED BY THE CONTRACTOR OR ANOTHER PARTY, BUT NOT VERIFIED BY THE CERTIFYING ENGINEER. THIS DOCUMENT ORIGINALLY ISSUED AND SEALED BY CHARLES M. BULLARD, SEAL NUMBER 036668. THIS MEDIA SHALL NOT BE CONSIDERED A CERTIFIED DOCUMENT.

THIS DOCUMENT ORIGINALLY ISSUED FOR CONSTRUCTION AND SEALED BY RONALD L. TAYLOR, SEAL NO. 024649

**HAZEN AND SAWYER**  
Environmental Engineers & Scientists  
4011 WestChase Blvd, Raleigh, North Carolina 27607

CITY OF ROANOKE  
VIRGINIA

REGIONAL WATER POLLUTION CONTROL PLANT  
PROCESS TRAIN IMPROVEMENTS

DIGESTER MODIFICATIONS  
MECHANICAL  
DIGESTER GAS SCHEMATIC

THE SCALE BAR SHOWN BELOW MEASURES ONE INCH LONG ON THE ORIGINAL DRAWING.	DATE	MARCH 2004
	H & S JOB NUMBER	30788B
	CONTRACT NUMBER	B
	DRAWING NUMBER	M805