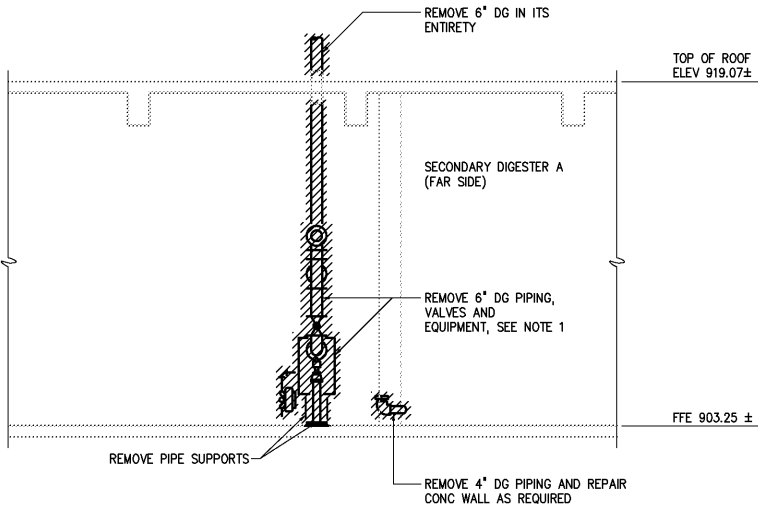
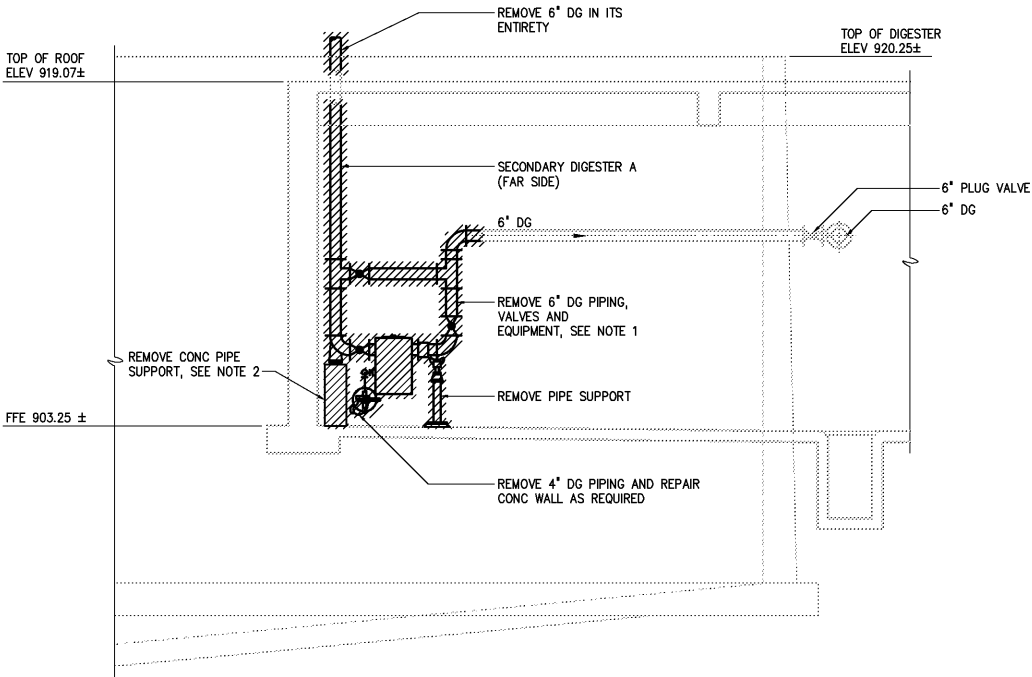


NOTES:

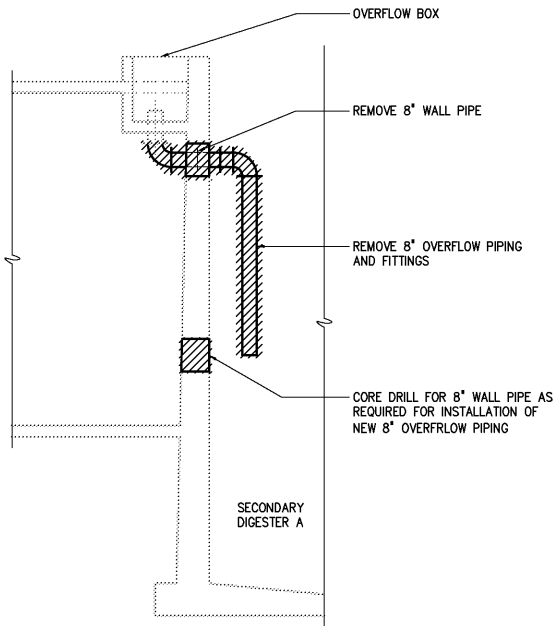
- 1 CONTRACTOR SHALL REUSE REMOVED 6" DG PIPING, VALVES AND EQUIPMENT TO ACCOMMODATE NEW 6" DG LAYOUT TO EXTENT POSSIBLE
- 2 ALL REINFORCEMENT OR OTHER METAL EMBEDMENTS EXPOSED DURING CONCRETE DEMOLITION WORK THAT WILL NOT BE CONCEALED BY FUTURE CONCRETE CONSTRUCTION SHALL BE BURNED BACK A MINIMUM OF 1/2' INTO PARENT CONCRETE. RESULTING VOID SHALL BE PATCHED FLUSH WITH EPOXY RESIN BINDER.



SECTION P
1/4"=1'-0" M812-3



SECTION Q
1/4"=1'-0" M812-3



SECTION R
1/4"=1'-0" M812-3

				DESIGNED	CMB/HGM
				DRAWN	HGM
				CHECKED	
3	AS BUILT	OCT 2007	RLT	PROJ. ENGR.	DAN
2	CONSTRUCTION	MAR 2004	RLT		
1	REGULATORY APPROVAL	NOV 2003	RLT		
NO.	ISSUED FOR	DATE	BY	APPROVED	

THIS DOCUMENT ORIGINALLY ISSUED
FOR CONSTRUCTION AND SEALED BY
ROBERT S. DIFIORE, SEAL NO. 22769

RECORD DRAWING

THIS DRAWING HAS BEEN MODIFIED TO REFLECT FIELD
CHANGES REPORTED BY THE CONTRACTOR OR ANOTHER
PARTY, BUT NOT VERIFIED BY THE CERTIFYING ENGINEER.
THIS DOCUMENT ORIGINALLY ISSUED AND SEALED BY
CHARLES M. BULLARD, SEAL NUMBER 036668. THIS MEDIA
SHALL NOT BE CONSIDERED A CERTIFIED DOCUMENT.

THIS DOCUMENT ORIGINALLY ISSUED
FOR CONSTRUCTION AND SEALED BY
RONALD L. TAYLOR, SEAL NO. 024649

HAZEN AND SAWYER
Environmental Engineers & Scientists
4011 WestChase Blvd, Raleigh, North Carolina 27607

CITY OF ROANOKE
VIRGINIA

REGIONAL WATER POLLUTION CONTROL PLANT
PROCESS TRAIN IMPROVEMENTS

DIGESTER MODIFICATIONS
MECHANICAL
SECTIONS
SECONDARY DIGESTER A

THE SCALE BAR
SHOWN BELOW
MEASURES ONE
INCH LONG ON
THE ORIGINAL
DRAWING.

DATE MARCH 2004

H & S JOB
NUMBER 30788B

CONTRACT
NUMBER B

DRAWING
NUMBER M812-3