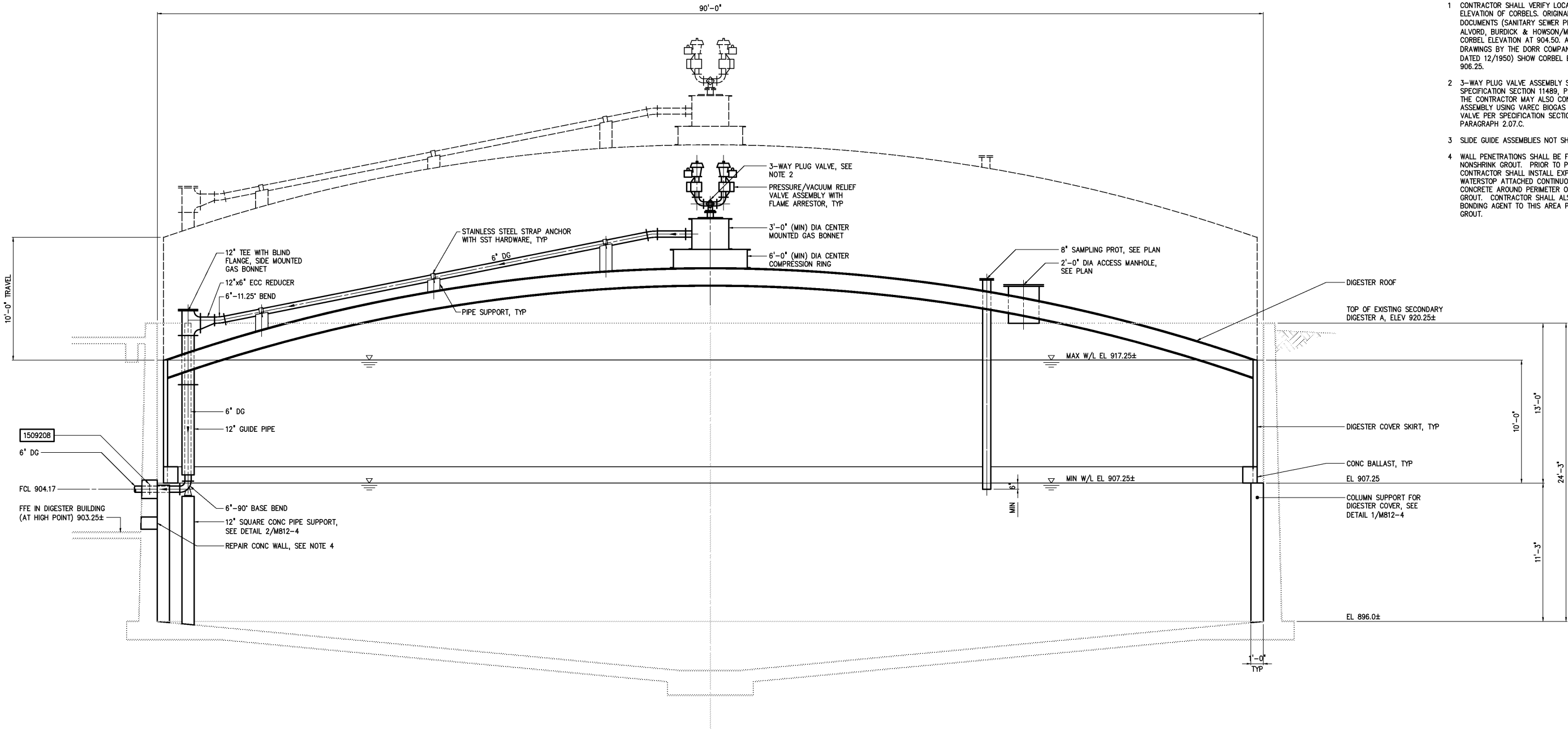


- NOTES:
- 1 CONTRACTOR SHALL VERIFY LOCATION AND ELEVATION OF CORBELS. ORIGINAL CONSTRUCTION DOCUMENTS (SANITARY SEWER PROJECT 3-1950 BY ALVORD, BURDICK & HOWSON/MATTERN) SHOW CORBEL ELEVATION AT 904.50. APPROVED SHOP DRAWINGS BY THE DORR COMPANY (SHEET 26559-2, DATED 12/1950) SHOW CORBEL ELEVATION AT 906.25.
  - 2 3-WAY PLUG VALVE ASSEMBLY SHOWN. AS PER SPECIFICATION SECTION 11489, PARAGRAPH 2.07.B THE CONTRACTOR MAY ALSO CONSIDER SIMILAR ASSEMBLY USING VAREC BIOGAS SAFETY SELECTOR VALVE PER SPECIFICATION SECTION 11489, PARAGRAPH 2.07.C.
  - 3 SLIDE GUIDE ASSEMBLIES NOT SHOWN
  - 4 WALL PENETRATIONS SHALL BE FILLED WITH NONSHRINK GROUT. PRIOR TO PLACING GROUT, CONTRACTOR SHALL INSTALL EXPANDING RUBBER WATERSTOP ATTACHED CONTINUOUSLY TO EXISTING CONCRETE AROUND PERIMETER OF AREA TO RECEIVE GROUT. CONTRACTOR SHALL ALSO APPLY EPOXYING BONDING AGENT TO THIS AREA PRIOR TO PLACING GROUT.



TYPICAL SECTION AT DIGESTER A

SECTION S  
1/4"=1'-0" M812-6

				DESIGNED	CMB/HGM
				DRAWN	HGM
				CHECKED	
3	AS BUILT	OCT 2007	RLT	PROJ. ENGR.	DAN
2	CONSTRUCTION	MAR 2004	RLT		
1	REGULATORY APPROVAL	NOV 2003	RLT		
NO.	ISSUED FOR	DATE	BY	APPROVED	

THIS DOCUMENT ORIGINALLY ISSUED FOR CONSTRUCTION AND SEALED BY ROBERT S. DIFIORE, SEAL NO. 22769

RECORD DRAWING

THIS DRAWING HAS BEEN MODIFIED TO REFLECT FIELD CHANGES REPORTED BY THE CONTRACTOR OR ANOTHER PARTY, BUT NOT VERIFIED BY THE CERTIFYING ENGINEER. THIS DOCUMENT ORIGINALLY ISSUED AND SEALED BY CHARLES M. BULLARD, SEAL NUMBER 036668. THIS MEDIA SHALL NOT BE CONSIDERED A CERTIFIED DOCUMENT.

THIS DOCUMENT ORIGINALLY ISSUED FOR CONSTRUCTION AND SEALED BY RONALD L. TAYLOR, SEAL NO. 024649

**HAZEN AND SAWYER**  
Environmental Engineers & Scientists  
4011 WestChase Blvd, Raleigh, North Carolina 27607

CITY OF ROANOKE  
VIRGINIA

REGIONAL WATER POLLUTION CONTROL PLANT  
PROCESS TRAIN IMPROVEMENTS

DIGESTER MODIFICATIONS  
MECHANICAL  
SECTIONS  
SECONDARY DIGESTER A

THE SCALE BAR SHOWN BELOW MEASURES ONE INCH LONG ON THE ORIGINAL DRAWING.	DATE MARCH 2004	H & S JOB NUMBER 30788B
	CONTRACT NUMBER B	DRAWING NUMBER M812-6