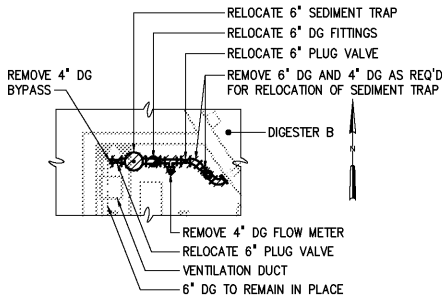
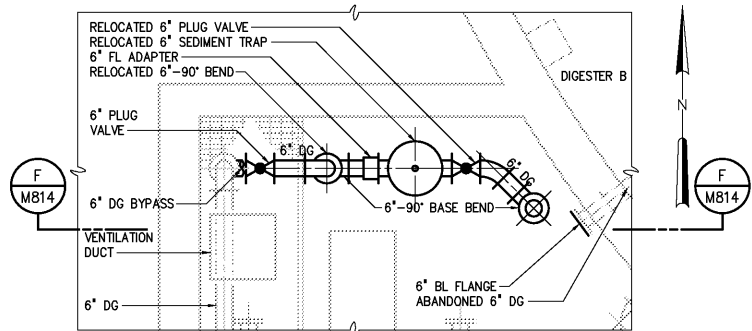


- NOTES:
- SEE NOTES 1 THROUGH 4 ON M812
 - CLEAN EXISTING 6" SEDIMENT TRAP FOR PRIMARY DIGESTER 4 PRIOR TO PLACING NEW DIGESTER PIPING INTO SERVICE
 - DIGESTER GAS FLOW METERS SHALL BE INSTALLED ON OF DIGESTER GAS PIPING

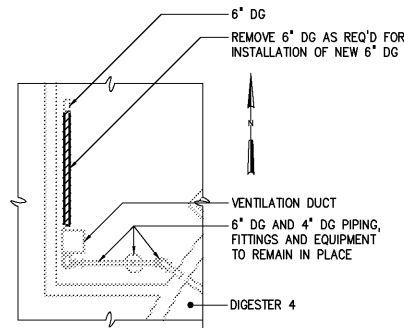


NOTE:
REMOVE CONC SUPPORT
UNDER 6"-90" BASE BEND

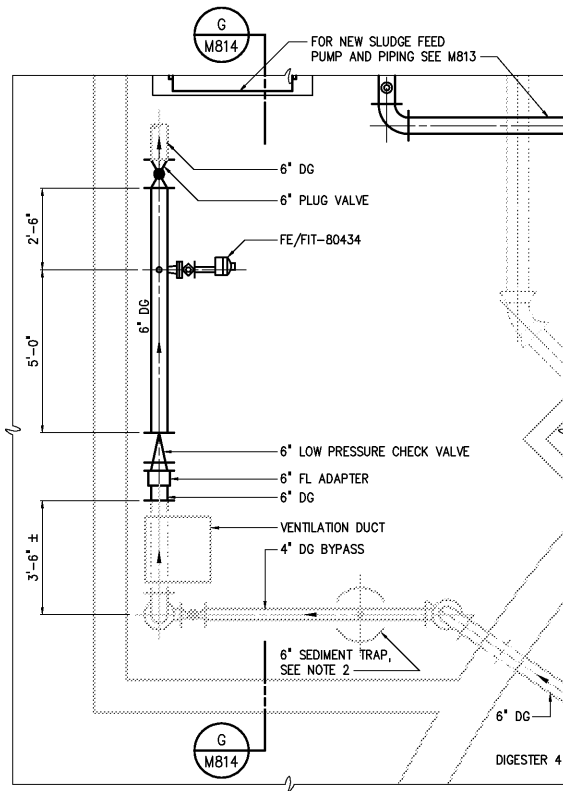
DEMOLITION PLAN
PIPE GALLERY AT DIGESTER B
1/8"=1'-0"



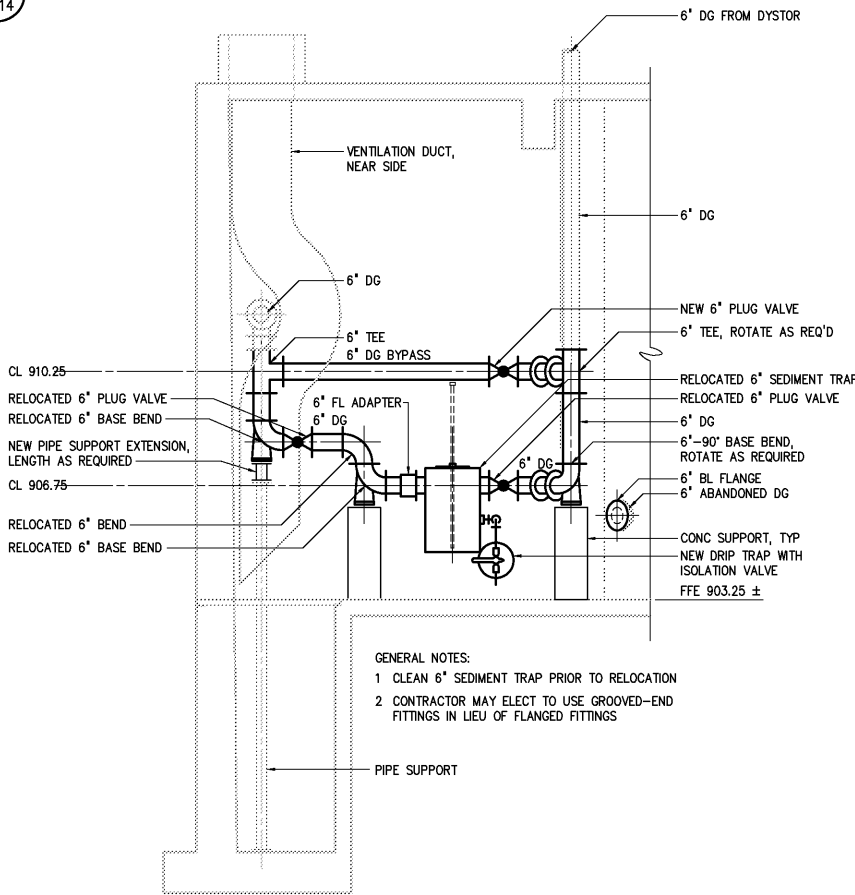
PLAN - PIPE GALLERY AT DIGESTER B
3/8"=1'-0"



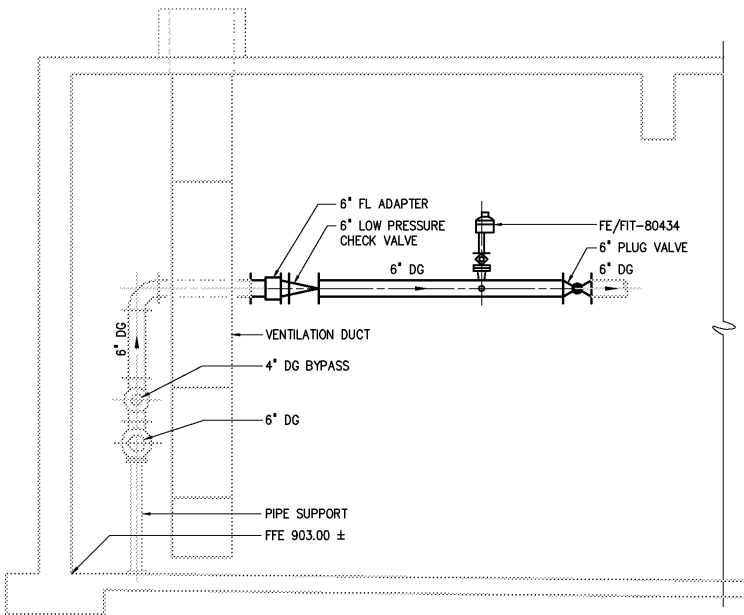
DEMOLITION PLAN
PIPE GALLERY AT DIGESTER 4
1/8"=1'-0"



PLAN - PIPE GALLERY AT DIGESTER 4
3/8"=1'-0"



**PIPE GALLERY
AT DIGESTER B**
SECTION F
3/8"=1'-0" M814



**PIPE GALLERY
AT DIGESTER 4**
SECTION G
3/8"=1'-0" M814

- GENERAL NOTES:
- CLEAN 6" SEDIMENT TRAP PRIOR TO RELOCATION
 - CONTRACTOR MAY ELECT TO USE GROOVED-END FITTINGS IN LIEU OF FLANGED FITTINGS

NO.	ISSUED FOR	DATE	BY	APPROVED
3	AS BUILT	OCT 2007	RLT	PROJ. ENGR. DAN
2	CONSTRUCTION	MAR 2004	RLT	
1	REGULATORY APPROVAL	NOV 2003	RLT	

THIS DOCUMENT ORIGINALLY ISSUED
FOR CONSTRUCTION AND SEALED BY
ROBERT S. DIFIORE, SEAL NO. 22769

RECORD DRAWING

THIS DRAWING HAS BEEN MODIFIED TO REFLECT FIELD
CHANGES REPORTED BY THE CONTRACTOR OR ANOTHER
PARTY, BUT NOT VERIFIED BY THE CERTIFYING ENGINEER.
THIS DOCUMENT ORIGINALLY ISSUED AND SEALED BY
CHARLES M. BULLARD, SEAL NUMBER 036668. THIS MEDIA
SHALL NOT BE CONSIDERED A CERTIFIED DOCUMENT.

THIS DOCUMENT ORIGINALLY ISSUED
FOR CONSTRUCTION AND SEALED BY
RONALD L. TAYLOR, SEAL NO. 024649

Hazen and Sawyer
Environmental Engineers & Scientists
4011 WestChase Blvd, Raleigh, North Carolina 27607

**CITY OF ROANOKE
VIRGINIA**
**REGIONAL WATER POLLUTION CONTROL PLANT
PROCESS TRAIN IMPROVEMENTS**

**DIGESTER MODIFICATIONS
MECHANICAL
PLANS AND SECTIONS - PIPE GALLERY
AT DIGESTERS 4 AND B**

THE SCALE BAR SHOWN BELOW MEASURES ONE INCH LONG ON THE ORIGINAL DRAWING.	DATE MARCH 2004	H & S JOB NUMBER 30788B	CONTRACT NUMBER B	DRAWING NUMBER M814
--	--------------------	-------------------------------	-------------------------	---------------------------