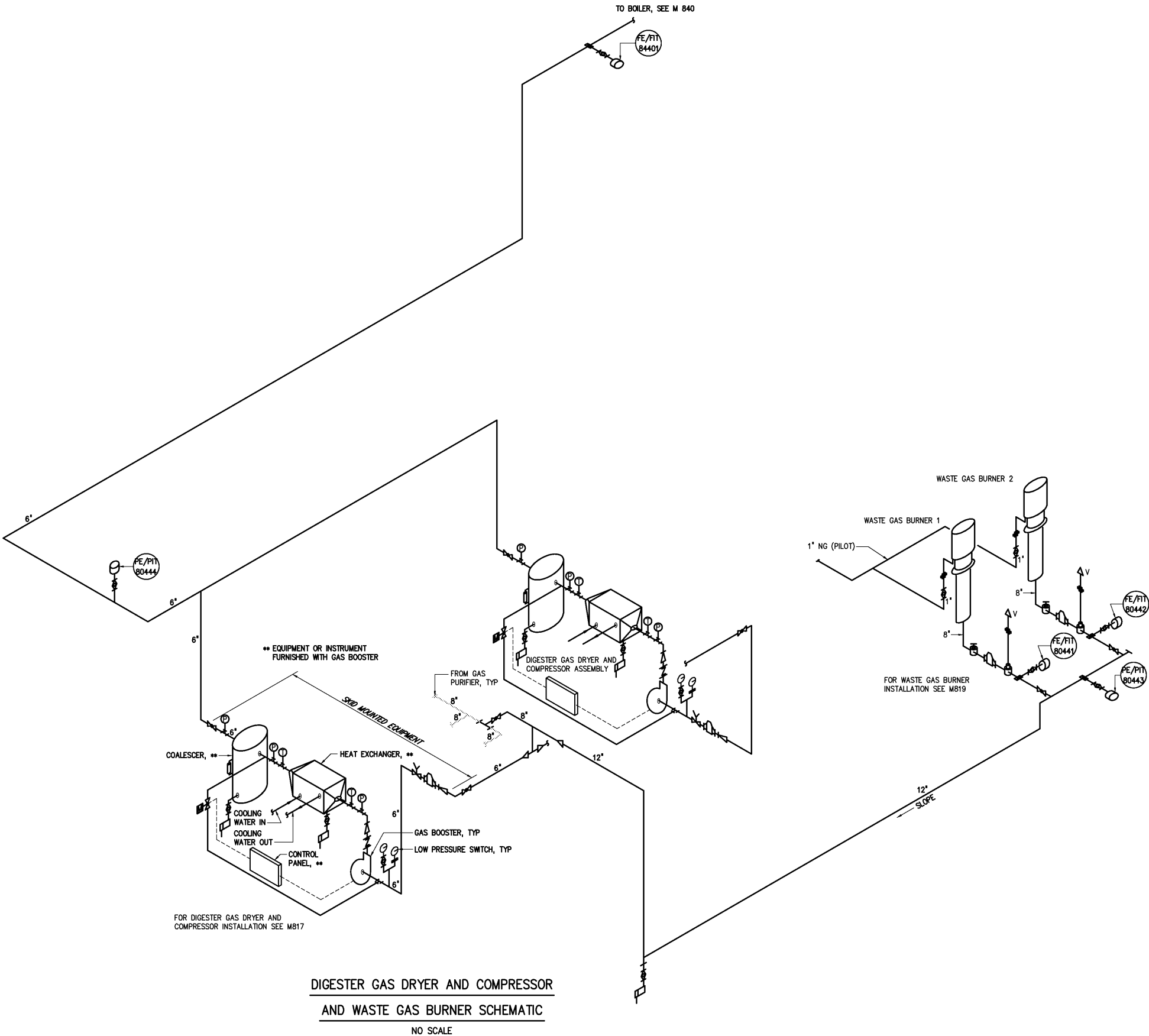


NOTES:



- LEGEND**
- ① TEMPERATURE GAGE
  - Ⓢ PRESSURE GAGE
  - Ⓢ SIGHT GLASS
  - Ⓢ MOTOR OPERATOR
  - Ⓢ BALL VALVE
  - Ⓢ PLUG VALVE
  - Ⓢ LOW PRESSURE CHECK VALVE
  - Ⓢ REDUCER
  - Ⓢ EXPANSION JOINT/VIBRATION ISOLATOR
  - Ⓢ FLAME TRAP
  - Ⓢ THERMAL SHUTOFF VALVE
  - Ⓢ PRESSURE RELIEF VALVE
  - Ⓢ EXPLOSION PRESSURE RERELIEF VALVE
  - Ⓢ FLAME CHECK
  - Ⓢ FLOW METER
  - Ⓢ PRESSURE SENSOR
  - Ⓢ PRESSURE GAGE/SWITCH
  - Ⓢ DRIP TRAP
  - Ⓢ VENT

				DESIGNED <u>CMB/HGM</u>	RECORD DRAWING	THIS DOCUMENT ORIGINALLY ISSUED FOR CONSTRUCTION AND SEALED BY ROBERT S. DIFIORE, SEAL NO. 22769	THIS DRAWING HAS BEEN MODIFIED TO REFLECT FIELD CHANGES REPORTED BY THE CONTRACTOR OR ANOTHER PARTY, BUT NOT VERIFIED BY THE CERTIFYING ENGINEER. THIS DOCUMENT ORIGINALLY ISSUED AND SEALED BY CHARLES M. BULLARD, SEAL NUMBER 036668. THIS MEDIA SHALL NOT BE CONSIDERED A CERTIFIED DOCUMENT.	HAZEN AND SAWYER Environmental Engineers & Scientists 4011 WestChase Blvd, Raleigh, North Carolina 27607	CITY OF ROANOKE VIRGINIA	DIGESTER MODIFICATIONS	THE SCALE BAR SHOWN BELOW MEASURES ONE INCH LONG ON THE ORIGINAL DRAWING.	DATE <u>MARCH 2004</u>	
				DRAWN <u>HGM</u>								H & S JOB NUMBER <u>30788B</u>	
				CHECKED									
3	AS BUILT	OCT 2007	RLT	PROJ. ENGR. <u>DAN</u>									
2	CONSTRUCTION	MAR 2004	RLT										
1	REGULATORY APPROVAL	NOV 2003	RLT						REGIONAL WATER POLLUTION CONTROL PLANT PROCESS TRAIN IMPROVEMENTS	MECHANICAL  SCHEMATIC	CONTRACT NUMBER <u>B</u>	DRAWING NUMBER <u>M818</u>	
NO.	ISSUED FOR	DATE	BY	APPROVED									