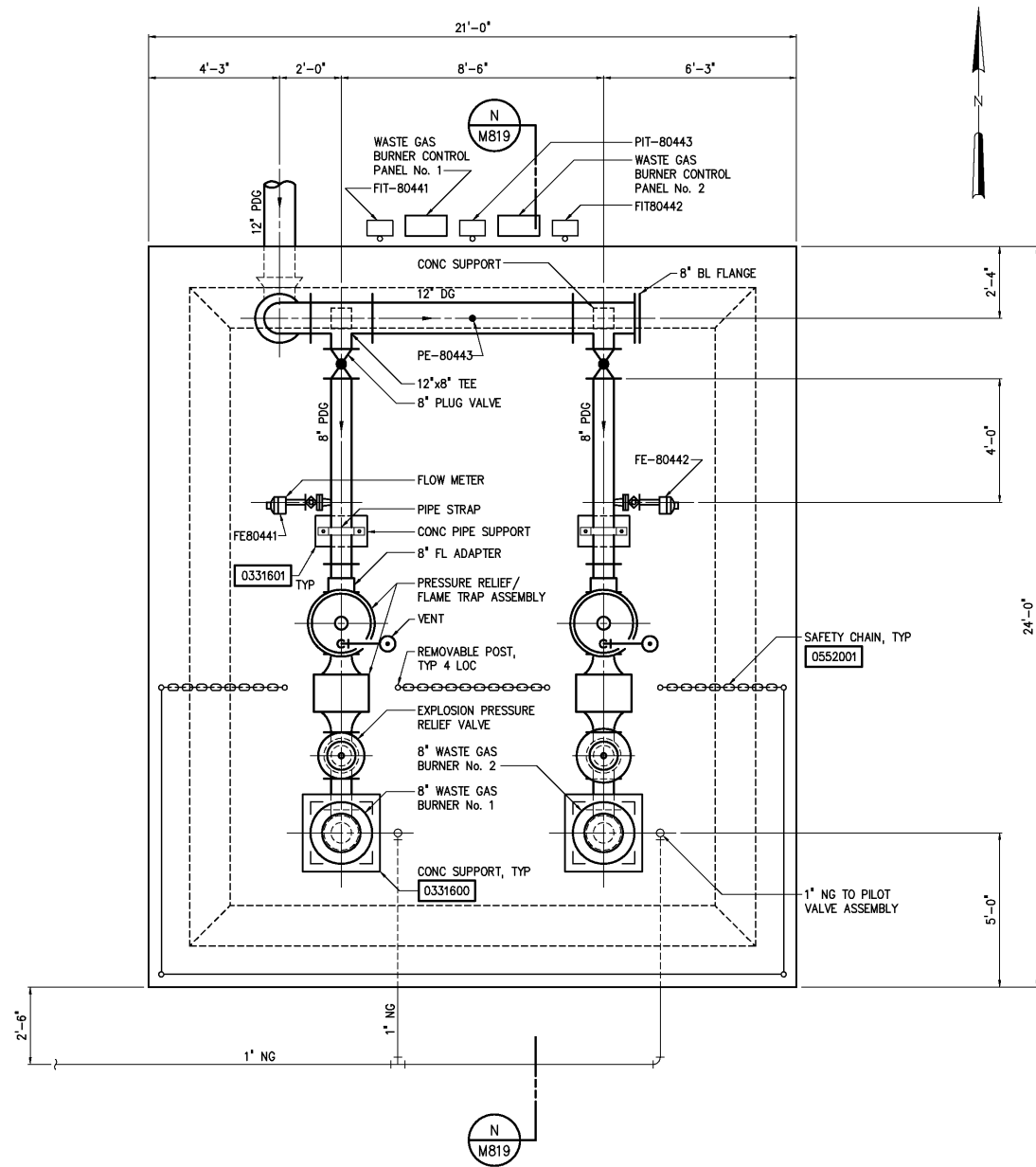
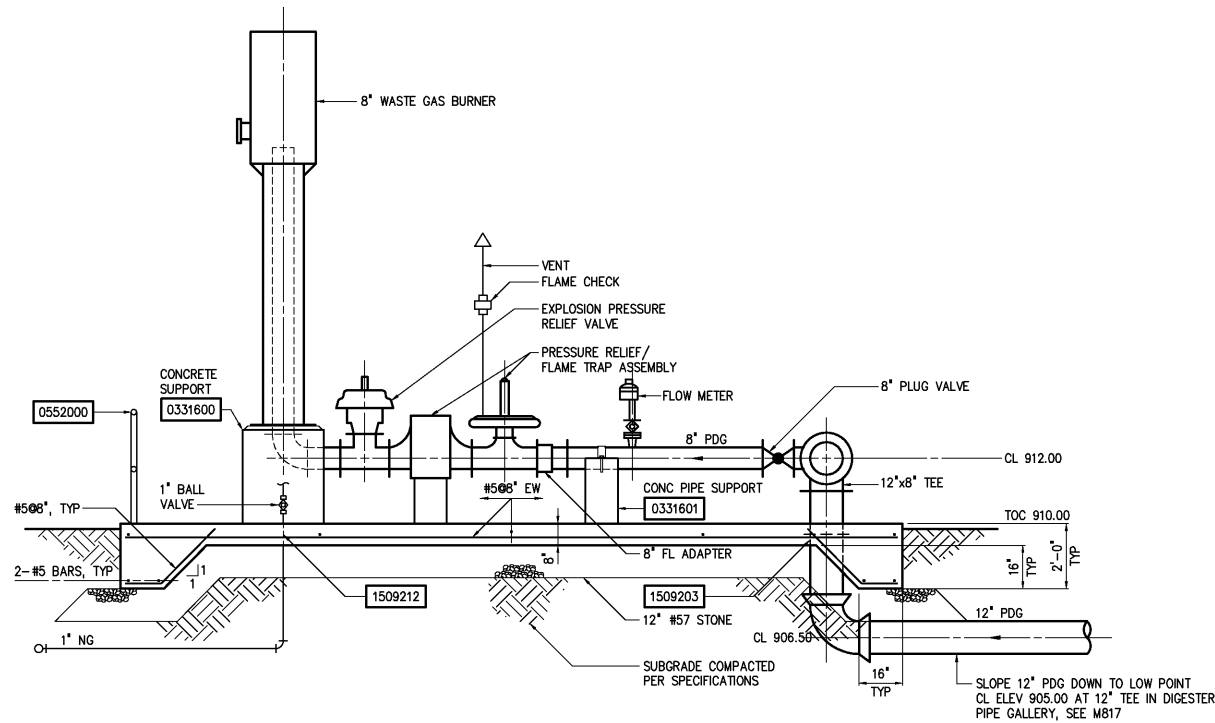


- NOTES:
- 1 FOR LOCATION OF WASTE GAS BURNER SEE G15
  - 2 FOR SCHEMATIC SEE M818
  - 3 FE-80441 AND FE-80442 SHALL BE MOUNTED ON THE CROWN OF THE DIGESTER PIPE



PLAN - WASTE GAS BURNER  
3/8"=1'-0"



				DESIGNED	CMB/HGM
				DRAWN	HGM
				CHECKED	
3	AS BUILT	OCT 2007	RLT	PROJ. ENGR.	DAN
2	CONSTRUCTION	MAR 2004	RLT		
1	REGULATORY APPROVAL	NOV 2003	RLT		
NO.	ISSUED FOR	DATE	BY	APPROVED	

THIS DOCUMENT ORIGINALLY ISSUED FOR CONSTRUCTION AND SEALED BY ROBERT S. DIFIORE, SEAL NO. 22769

THIS DOCUMENT ORIGINALLY ISSUED FOR CONSTRUCTION AND SEALED BY RONALD L. TAYLOR, SEAL NO. 024649

RECORD DRAWING

THIS DRAWING HAS BEEN MODIFIED TO REFLECT FIELD CHANGES REPORTED BY THE CONTRACTOR OR ANOTHER PARTY, BUT NOT VERIFIED BY THE CERTIFYING ENGINEER. THIS DOCUMENT ORIGINALLY ISSUED AND SEALED BY CHARLES M. BULLARD, SEAL NUMBER 036668. THIS MEDIA SHALL NOT BE CONSIDERED A CERTIFIED DOCUMENT.

**HAZEN AND SAWYER**  
Environmental Engineers & Scientists  
4011 WestChase Blvd, Raleigh, North Carolina 27607

CITY OF ROANOKE  
VIRGINIA

REGIONAL WATER POLLUTION CONTROL PLANT  
PROCESS TRAIN IMPROVEMENTS

DIGESTER MODIFICATION  
MECHANICAL  
PLAN AND SECTION - WASTE GAS BURNERS

THE SCALE BAR SHOWN BELOW MEASURES ONE INCH LONG ON THE ORIGINAL DRAWING.

DATE	MARCH 2004
H & S JOB NUMBER	30788B
CONTRACT NUMBER	B
DRAWING NUMBER	M819