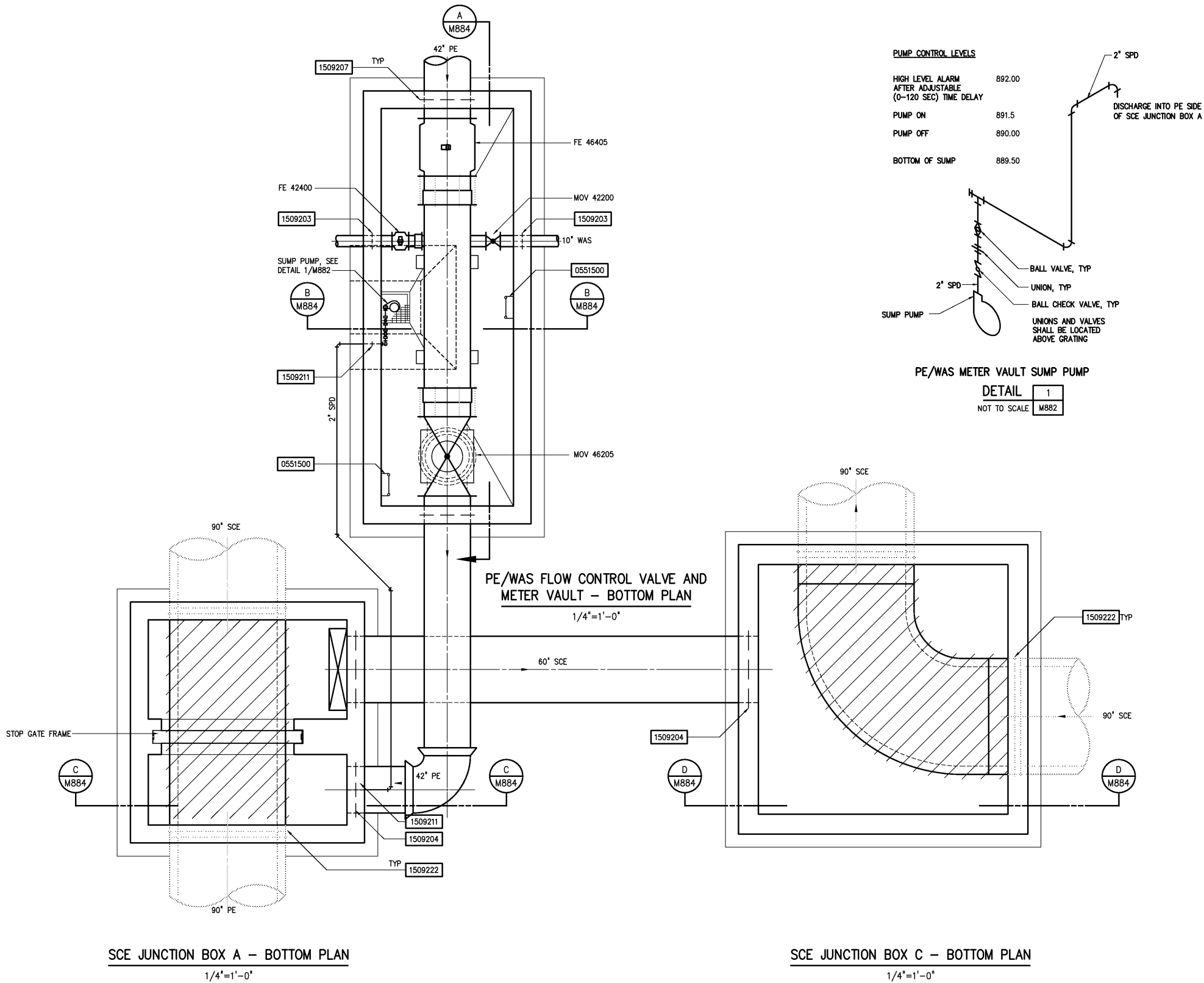


NOTES:
1 SEE SPECIFICATION SECTION 01520 FOR SEQUENCE OF CONSTRUCTION AND TIE-INS.



				DESIGNED	DAN	RECORD DRAWING	HAZEN AND SAWYER Environmental Engineers & Scientists 4011 WestChase Blvd, Raleigh, North Carolina 27607	CITY OF ROANOKE VIRGINIA	REGIONAL WATER POLLUTION CONTROL PLANT PROCESS TRAIN IMPROVEMENTS	MISCELLANEOUS YARD STRUCTURES MECHANICAL BOTTOM PLANS AND DETAIL	THE SCALE BAR SHOWN BELOW MEASURES ONE INCH LONG ON THE ORIGINAL DRAWING.	DATE MARCH 2004			
				DRAWN	RWB							THIS DOCUMENT ORIGINALLY ISSUED FOR CONSTRUCTION AND SEALED BY ROBERT S. DIFIORE, SEAL NO. 22769	THIS DRAWING HAS BEEN MODIFIED TO REFLECT FIELD CHANGES REPORTED BY THE CONTRACTOR OR ANOTHER PARTY, BUT NOT VERIFIED BY THE CERTIFYING ENGINEER. THIS DOCUMENT ORIGINALLY ISSUED AND SEALED BY DAVID A. NAILOR, 025465. THIS MEDIA SHALL NOT BE CONSIDERED A CERTIFIED DOCUMENT.	H & S JOB NUMBER	30788B
				CHECKED											
				PROJ. ENGR.	DAN							THIS DOCUMENT ORIGINALLY ISSUED FOR CONSTRUCTION AND SEALED BY RONALD L. TAYLOR, SEAL NO. 024649			
3	AS BUILT	OCT 2007	RLT												
2	CONSTRUCTION	MAR 2004	RLT												
1	REGULATORY APPROVAL	NOV 2003	RLT												
NO.	ISSUED FOR	DATE	BY	APPROVED											