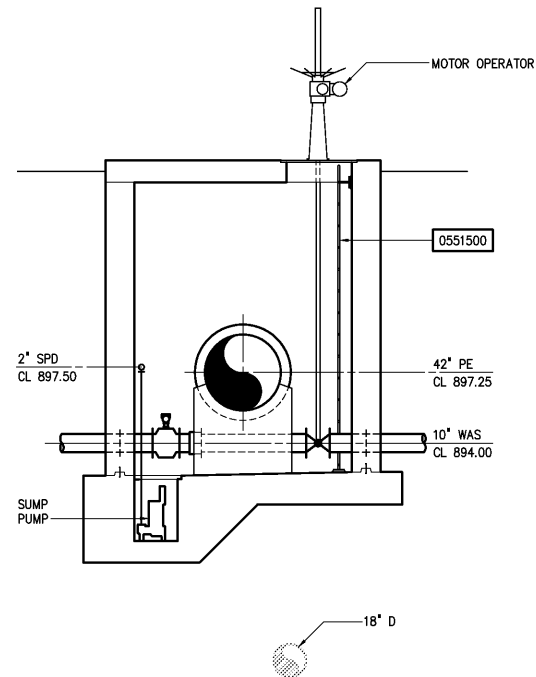


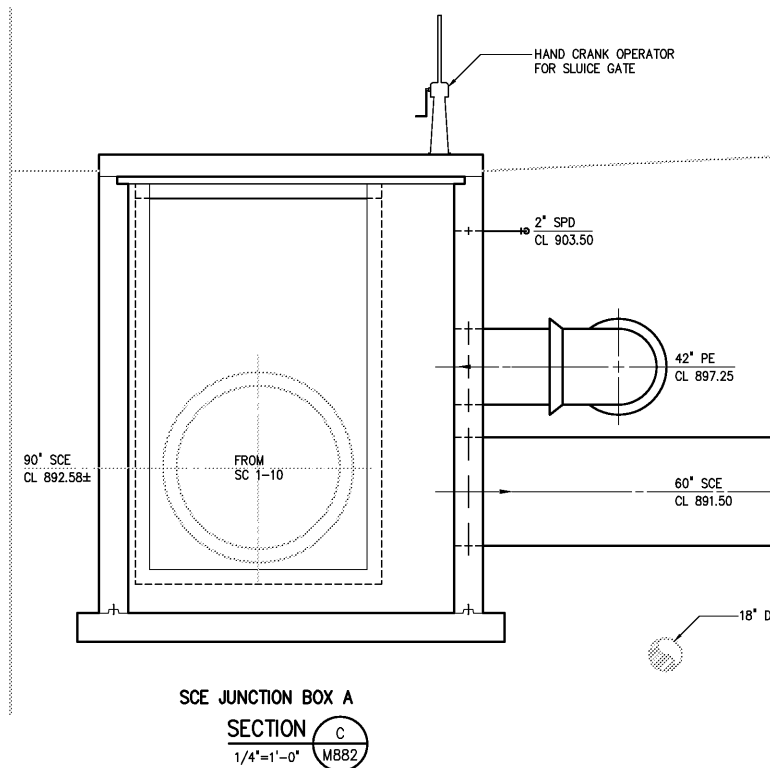
PE/WAS FLOW CONTROL VALVE
AND METER VAULT

SECTION **A**
1/4"=1'-0" M882



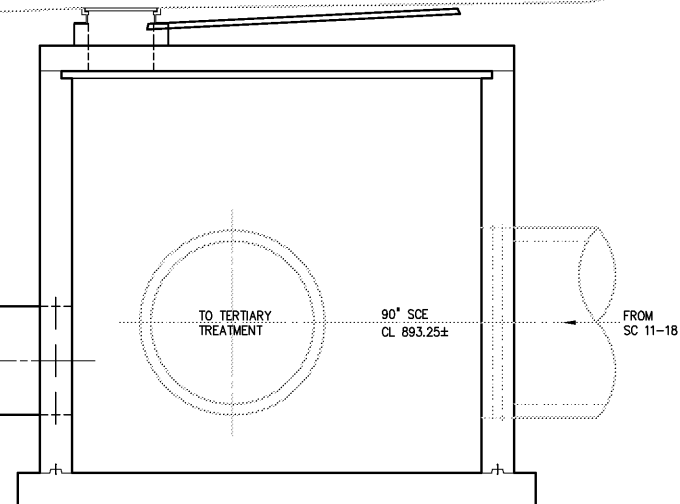
PE/WAS FLOW CONTROL VALVE
AND METER VAULT

SECTION **B**
1/4"=1'-0" M882



SCE JUNCTION BOX A

SECTION **C**
1/4"=1'-0" M882



SCE JUNCTION BOX C

SECTION **D**
1/4"=1'-0" M882

				DESIGNED	DAN	<div>THIS DOCUMENT ORIGINALLY ISSUED FOR CONSTRUCTION AND SEALED BY ROBERT S. DIFIORE, SEAL NO. 22769</div>	<div>RECORD DRAWING</div> <div>THIS DRAWING HAS BEEN MODIFIED TO REFLECT FIELD CHANGES REPORTED BY THE CONTRACTOR OR ANOTHER PARTY, BUT NOT VERIFIED BY THE CERTIFYING ENGINEER. THIS DOCUMENT ORIGINALLY ISSUED AND SEALED BY DAVID A. NAILOR, 025465. THIS MEDIA SHALL NOT BE CONSIDERED A CERTIFIED DOCUMENT.</div>	<div><div>Hazen and Sawyer</div><div>Environmental Engineers & Scientists</div><div>4011 WestChase Blvd, Raleigh, North Carolina 27607</div></div>	<div>CITY OF ROANOKE</div> <div>VIRGINIA</div>	<div>MISCELLANEOUS YARD STRUCTURES</div> <div>MECHANICAL</div> <div>SECTIONS</div>	<div>THE SCALE BAR SHOWN BELOW MEASURES ONE INCH LONG ON THE ORIGINAL DRAWING.</div>	DATE MARCH 2004	
				H & S JOB NUMBER 30788B									
3	AS BUILT	OCT 2007	RLT	PROJ. ENGR.	DAN							CONTRACT NUMBER B	DRAWING NUMBER M884
2	CONSTRUCTION	MAR 2004	RLT										
1	REGULATORY APPROVAL	NOV 2003	RLT			<div>THIS DOCUMENT ORIGINALLY ISSUED FOR CONSTRUCTION AND SEALED BY RONALD L. TAYLOR, SEAL NO. 024649</div>							
NO.	ISSUED FOR	DATE	BY	APPROVED									