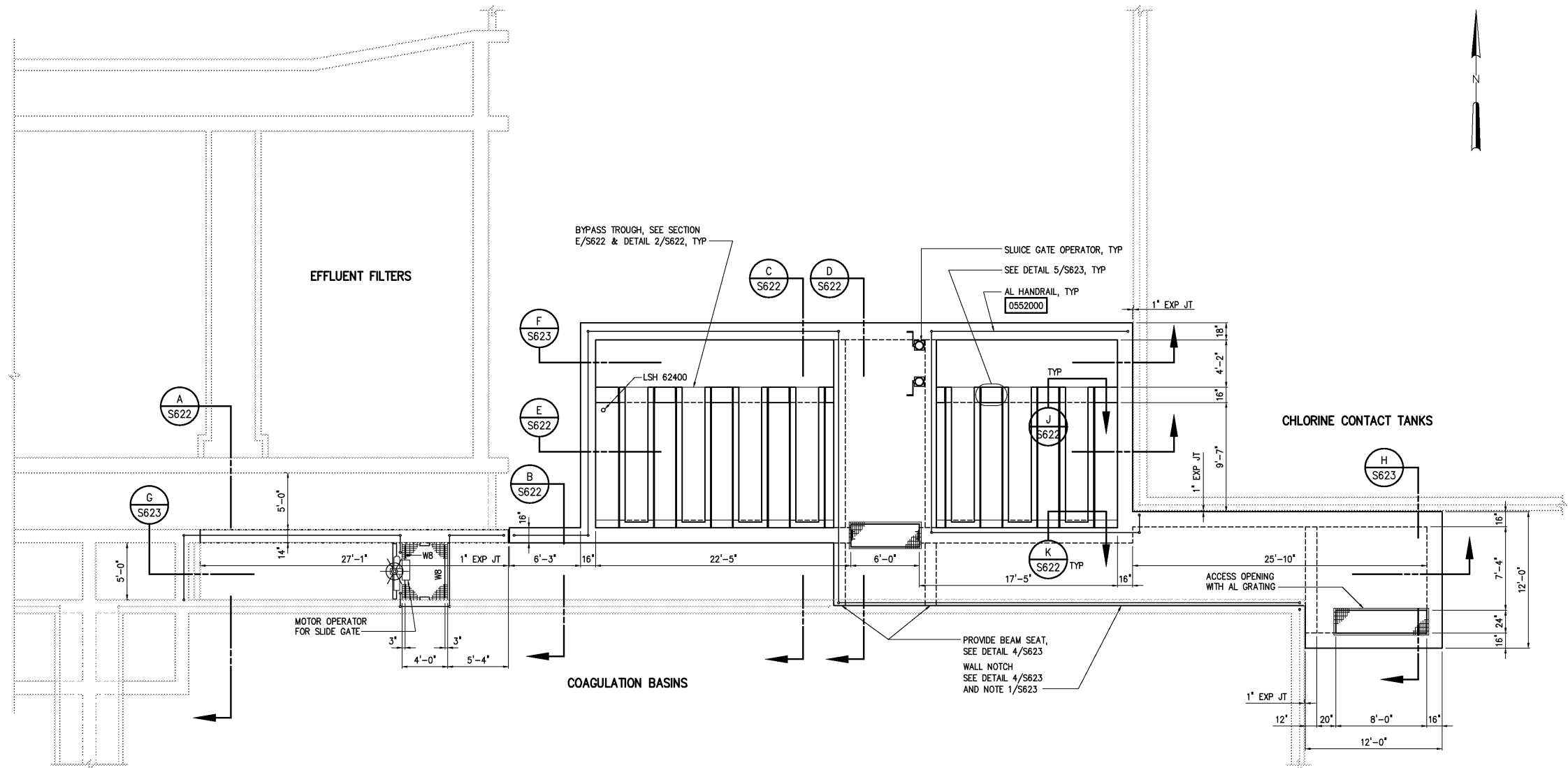


NOTES:
1 WB INDICATES AL WBx7.02.



TOP PLAN
3/16"=1'-0"

				DESIGNED _____ WGL	RECORD DRAWING	<div>Hazen and Sawyer</div> <div>Environmental Engineers & Scientists</div> <div>4011 WestChase Blvd, Raleigh, North Carolina 27607</div>	<div>CITY OF ROANOKE</div> <div>VIRGINIA</div>	<div>FILTER BYPASS</div> <div>STRUCTURAL</div> <div>TOP PLAN</div>	<div>THE SCALE BAR</div> <div>SHOWN BELOW</div> <div>MEASURES ONE</div> <div>INCH LONG ON</div> <div>THE ORIGINAL</div> <div>DRAWING.</div>	DATE _____ MARCH 2004
			DRAWN _____ RWB/DDZ	H & S JOB NUMBER 30788B						
			CHECKED _____	CONTRACT NUMBER B						
3	AS BUILT	OCT 2007	RLT	PROJ. ENGR. _____ DAN	DRAWING NUMBER S621					
2	CONSTRUCTION	MAR 2004	RLT							
1	REGULATORY APPROVAL	NOV 2003	RLT							
NO.	ISSUED FOR	DATE	BY	APPROVED _____						
				THIS DOCUMENT ORIGINALLY ISSUED FOR CONSTRUCTION AND SEALED BY ROBERT S. DIFIORE, SEAL NO. 22769		THIS DRAWING HAS BEEN MODIFIED TO REFLECT FIELD CHANGES REPORTED BY THE CONTRACTOR OR ANOTHER PARTY, BUT NOT VERIFIED BY THE CERTIFYING ENGINEER. THIS DOCUMENT ORIGINALLY ISSUED AND SEALED BY CHRISTOPHER T. PHILLIPS, 033796. THIS MEDIA SHALL NOT BE CONSIDERED A CERTIFIED DOCUMENT.				
				THIS DOCUMENT ORIGINALLY ISSUED FOR CONSTRUCTION AND SEALED BY RONALD L. TAYLOR, SEAL NO. 024649						