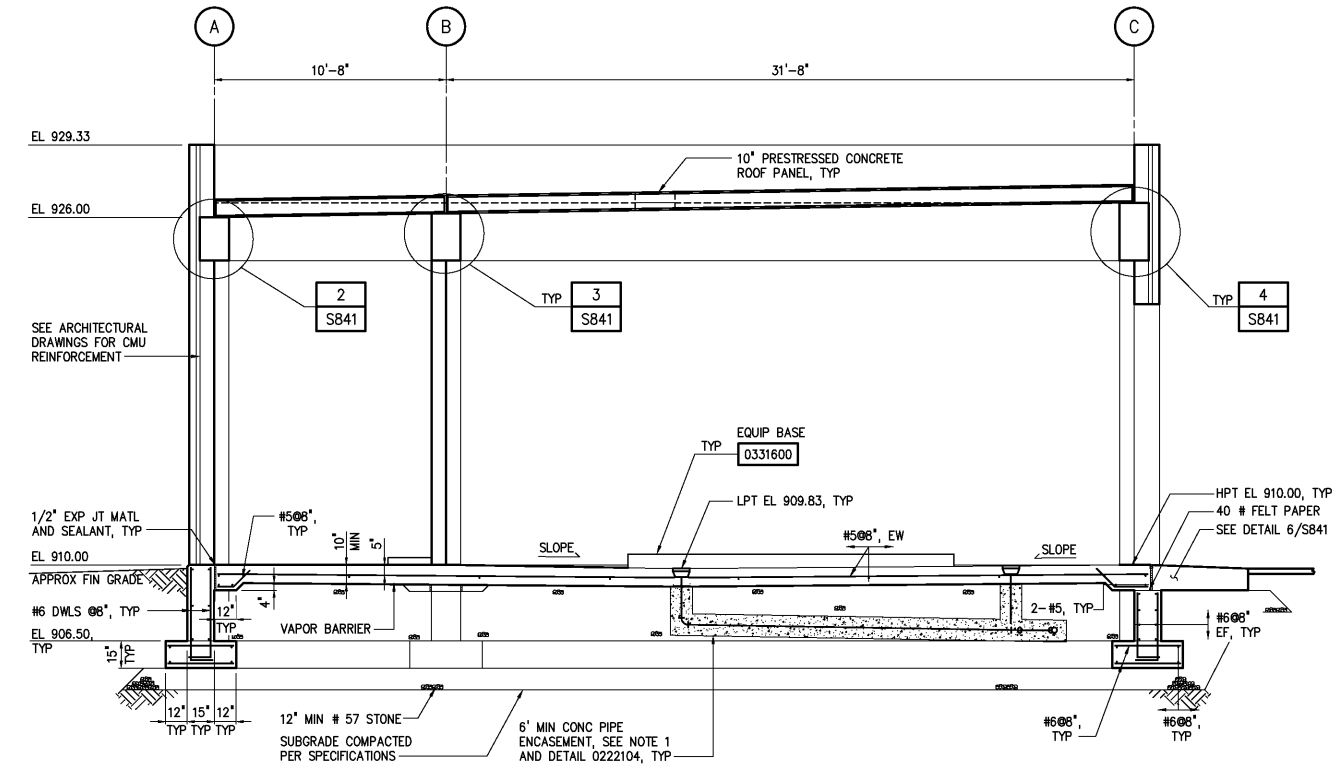
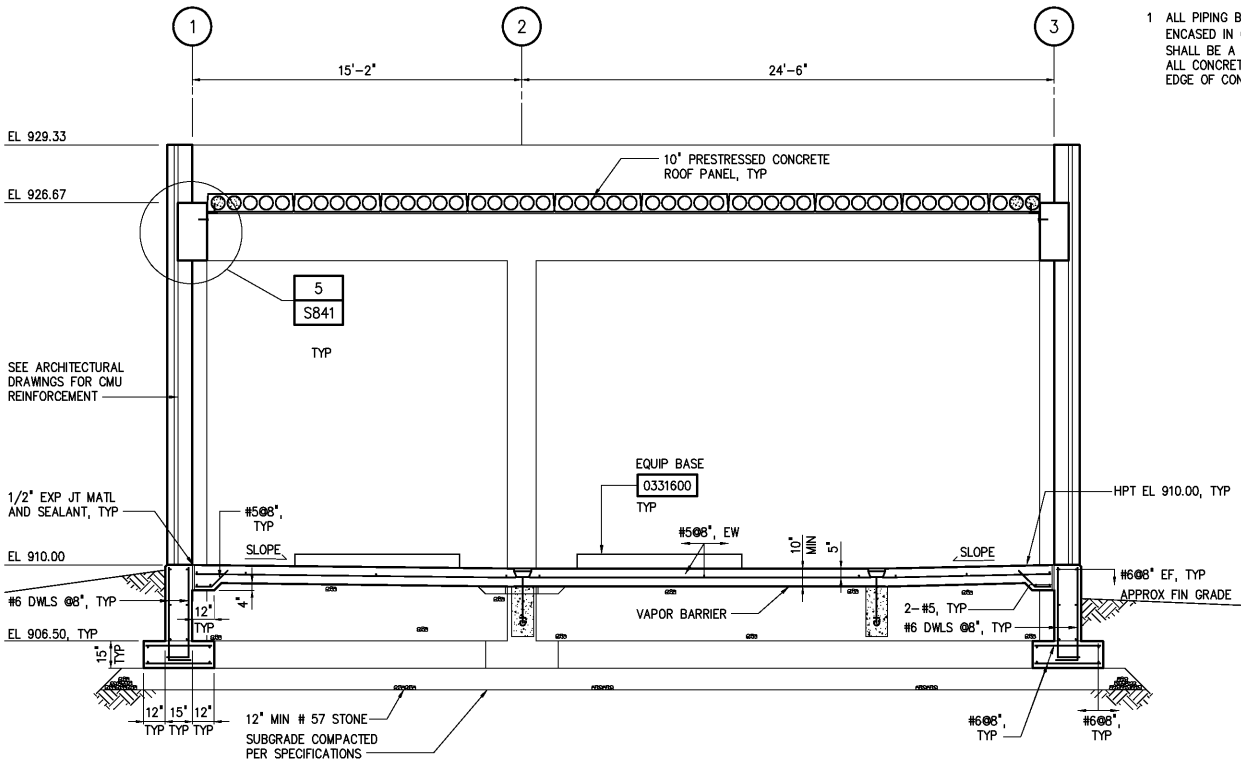


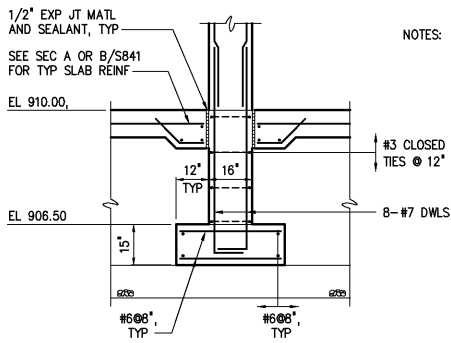
NOTES:
1 ALL PIPING BELOW BOILER BUILDING SHALL BE ENCASED IN CLASS "B" CONCRETE. ENCASEMENT SHALL BE A MINIMUM OF 6" THICK AROUND PIPE. ALL CONCRETE ENCASEMENT SHALL EXTEND OUT TO EDGE OF CONCRETE SLAB.



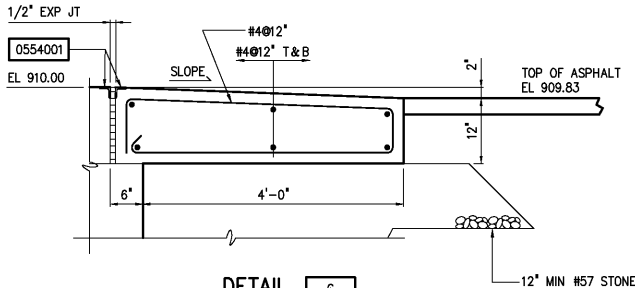
SECTION A
1/4"=1'-0" S840



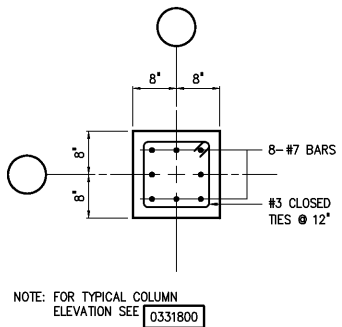
SECTION B
1/4"=1'-0" S840



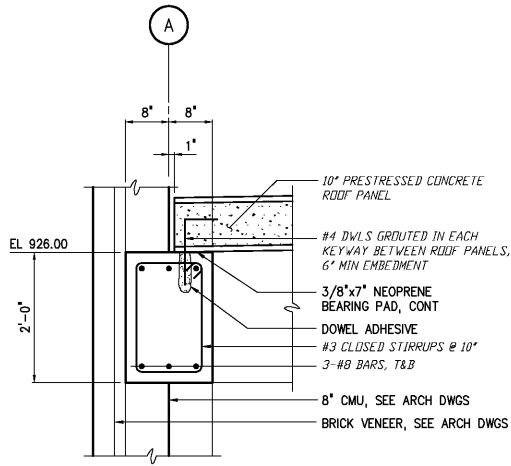
SECTION C
3/8"=1'-0" S840



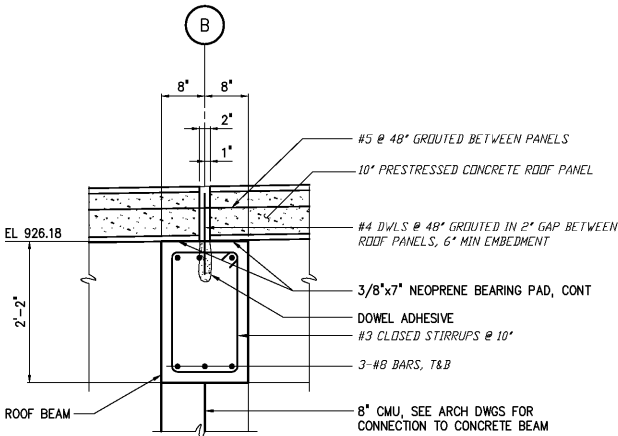
DETAIL 6
3/4"=1'-0" S841



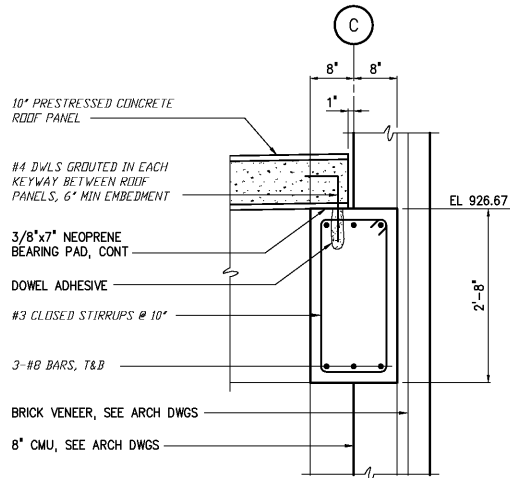
TYPICAL COLUMN
DETAIL 1
3/4"=1'-0" S840



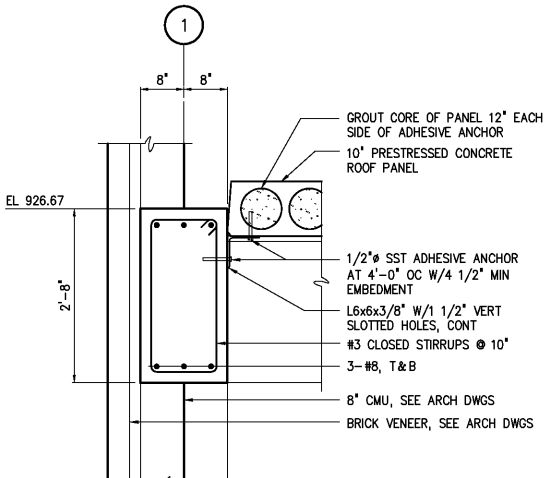
DETAIL 2
3/4"=1'-0" S841



DETAIL 3
3/4"=1'-0" S841



DETAIL 4
3/4"=1'-0" S841



DETAIL 5
3/4"=1'-0" S841

3	AS BUILT	OCT 2007	RLT
2	CONSTRUCTION	MAR 2004	RLT
1	REGULATORY APPROVAL	NOV 2003	RLT
NO.	ISSUED FOR	DATE	BY

DESIGNED	WGL/DDZ
DRAWN	DDZ
CHECKED	
PROJ. ENGR.	DAN
APPROVED	

THIS DOCUMENT ORIGINALLY ISSUED FOR CONSTRUCTION AND SEALED BY ROBERT S. DIFIORE, SEAL NO. 22769

THIS DOCUMENT ORIGINALLY ISSUED FOR CONSTRUCTION AND SEALED BY RONALD L. TAYLOR, SEAL NO. 024649

RECORD DRAWING

THIS DRAWING HAS BEEN MODIFIED TO REFLECT FIELD CHANGES REPORTED BY THE CONTRACTOR OR ANOTHER PARTY, BUT NOT VERIFIED BY THE CERTIFYING ENGINEER. THIS DOCUMENT ORIGINALLY ISSUED AND SEALED BY CHRISTOPHER T. PHILLIPS, 033796. THIS MEDIA SHALL NOT BE CONSIDERED A CERTIFIED DOCUMENT.

HAZEN AND SAWYER
Environmental Engineers & Scientists
4011 WestChase Blvd, Raleigh, North Carolina 27607

CITY OF ROANOKE
VIRGINIA
REGIONAL WATER POLLUTION CONTROL PLANT
PROCESS TRAIN IMPROVEMENTS

BOILER BUILDING
STRUCTURAL
SECTIONS AND DETAILS

THE SCALE BAR SHOWN BELOW MEASURES ONE INCH LONG ON THE ORIGINAL DRAWING.	DATE MARCH 2004
H & S JOB NUMBER CONTRACT NUMBER B	30788B DRAWING NUMBER S841