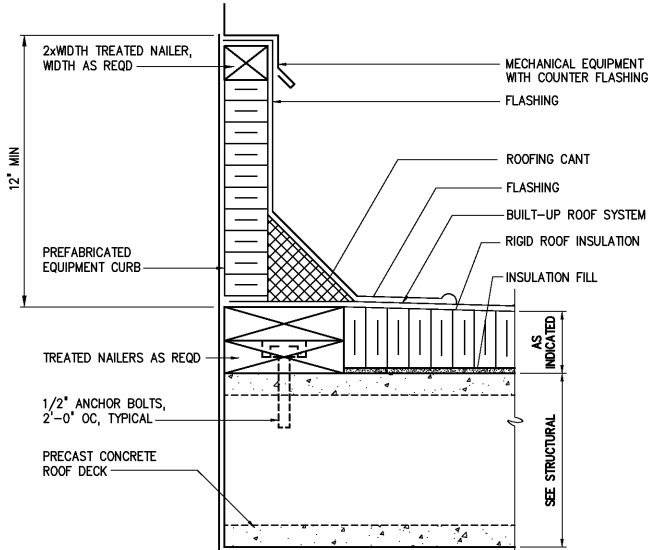


ALL ROOFING MEMBRANE DETAILS SHALL BE IN ACCORDANCE WITH MANUFACTURER'S RECOMMENDATIONS

PIPE THRU ROOF – TEMP 180° AND ABOVE

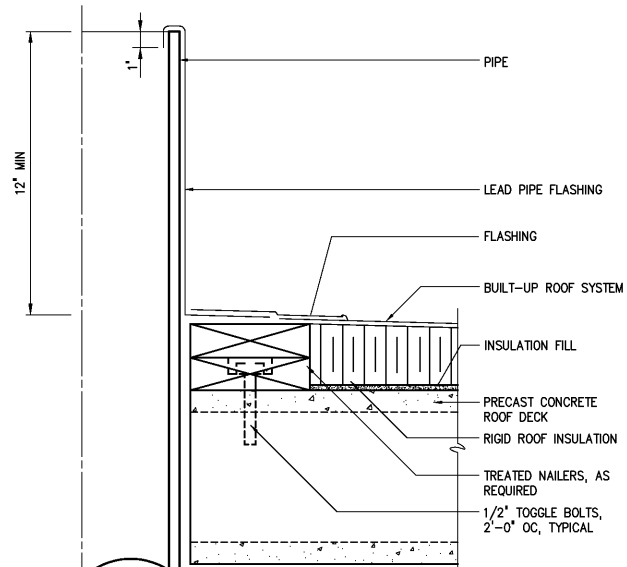
DETAIL	18
3\"=1'-0"	A3



ALL ROOFING DETAILS SHALL BE IN ACCORDANCE WITH MANUFACTURER'S RECOMMENDATIONS

EQUIPMENT CURB

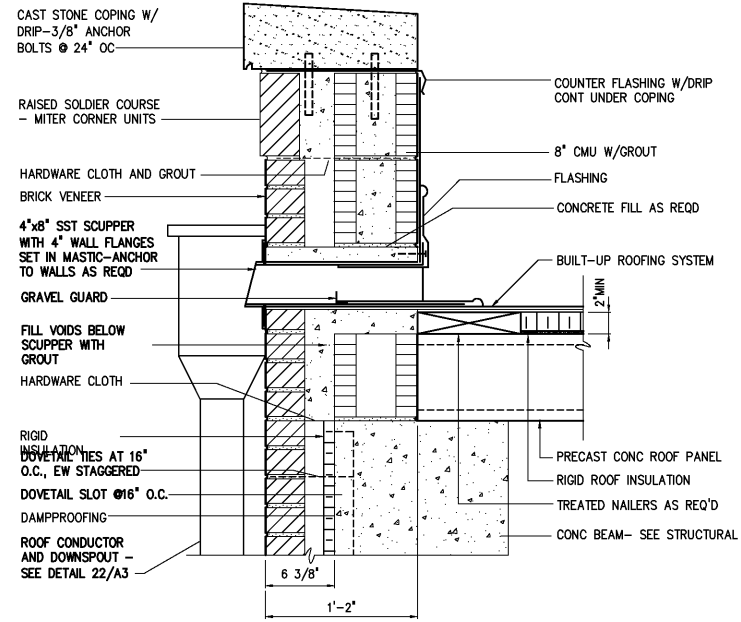
DETAIL	19
3\"=1'-0"	A3



ALL ROOFING DETAILS SHALL BE IN ACCORDANCE WITH MANUFACTURER'S RECOMMENDATIONS

PIPE THRU ROOF

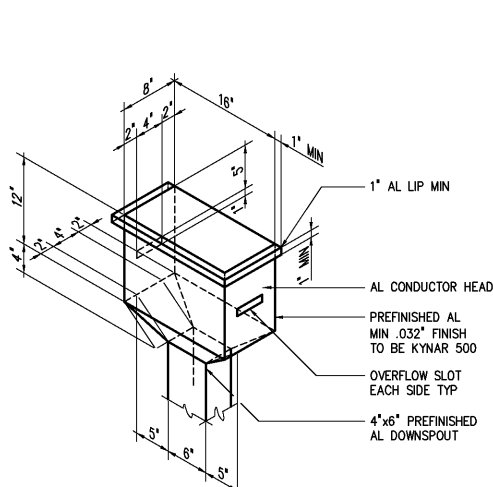
DETAIL	20
3\"=1'-0"	A3



ALL ROOFING DETAILS SHALL BE IN ACCORDANCE WITH MANUFACTURER'S RECOMMENDATIONS

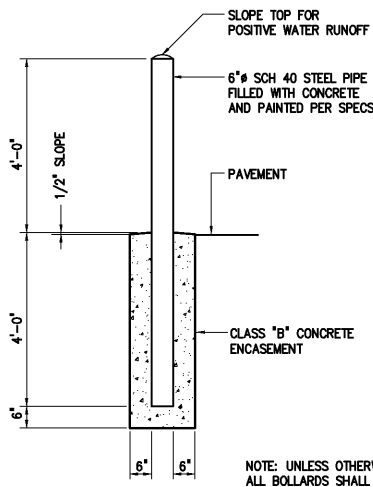
SCUPPER DETAIL

DETAIL	21
1 1/2\"=1'-0"	A3



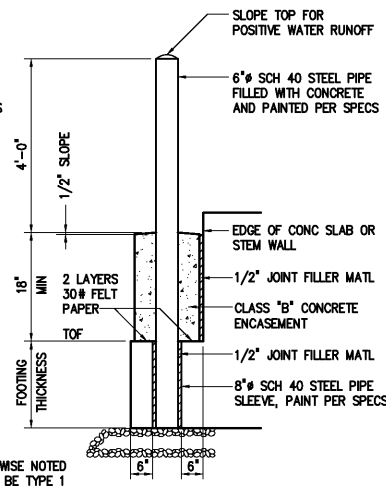
CONDUCTOR HEAD
0763009

DETAIL	22
1 1/2\"=1'-0"	A3



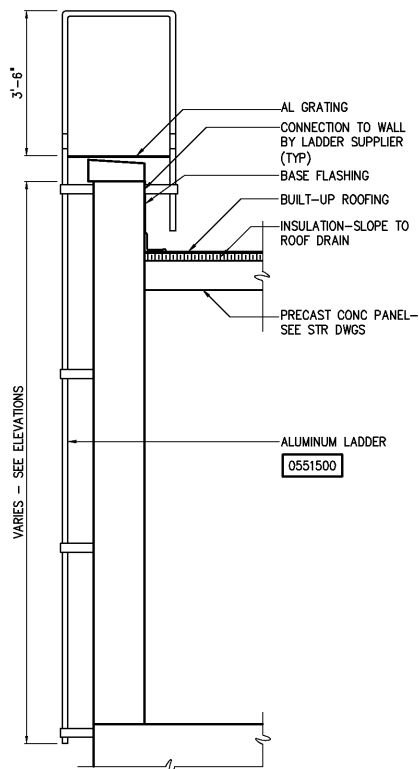
BOLLARD TYPE 1

0245100



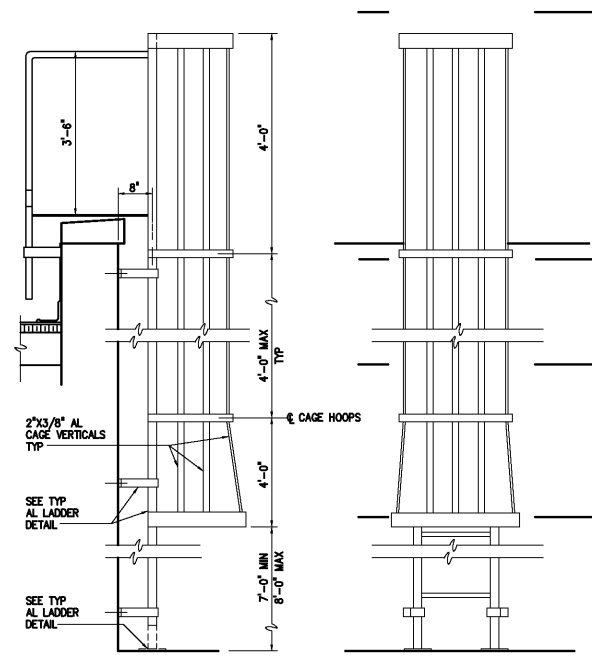
BOLLARD TYPE 2

DETAIL	23
1 1/2\"=1'-0"	A3



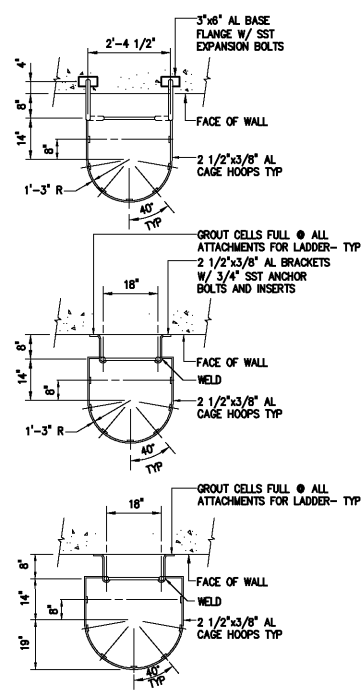
ROOF LADDER AND CAGE

DETAIL	24
NTS	A3



CAGE FOR ALUM LADDER

0551501



0551502

				DESIGNED WHR	<p>THIS DOCUMENT ORIGINALLY ISSUED FOR CONSTRUCTION AND SEALED BY ROBERT S. DIFIORE, SEAL NO. 22769</p> <p>THIS DOCUMENT ORIGINALLY ISSUED FOR CONSTRUCTION AND SEALED BY RONALD L. TAYLOR, SEAL NO. 024649</p>	<p>RECORD DRAWING</p> <p>THIS DRAWING HAS BEEN MODIFIED TO REFLECT FIELD CHANGES REPORTED BY THE CONTRACTOR OR ANOTHER PARTY, BUT NOT VERIFIED BY THE CERTIFYING ENGINEER. THIS DOCUMENT ORIGINALLY ISSUED AND SEALED BY WILLIAM H. RUSSELL, SEAL NUMBER 008532. THIS MEDIA SHALL NOT BE CONSIDERED A CERTIFIED DOCUMENT.</p>	<p>Hazen and Sawyer Environmental Engineers & Scientists 4011 WestChase Blvd, Raleigh, North Carolina 27607</p>	<p>CITY OF ROANOKE VIRGINIA</p> <p>REGIONAL WATER POLLUTION CONTROL PLANT PROCESS TRAIN IMPROVEMENTS</p>	<p>ARCHITECTURAL MISCELLANEOUS DETAILS</p>	<p>THE SCALE BAR SHOWN BELOW MEASURES ONE INCH LONG ON THE ORIGINAL DRAWING.</p>	DATE MARCH 2004	
				DRAWN ALB							H & S JOB NUMBER 30788B	
				CHECKED							CONTRACT NUMBER B	DRAWING NUMBER A3
3	AS BUILT	OCT 2007	RLT	PROJ. ENGR. DAN								
2	CONSTRUCTION	MAR 2004	RLT									
1	REGULATORY APPROVAL	NOV 2003	RLT									
NO.	ISSUED FOR	DATE	BY	APPROVED								