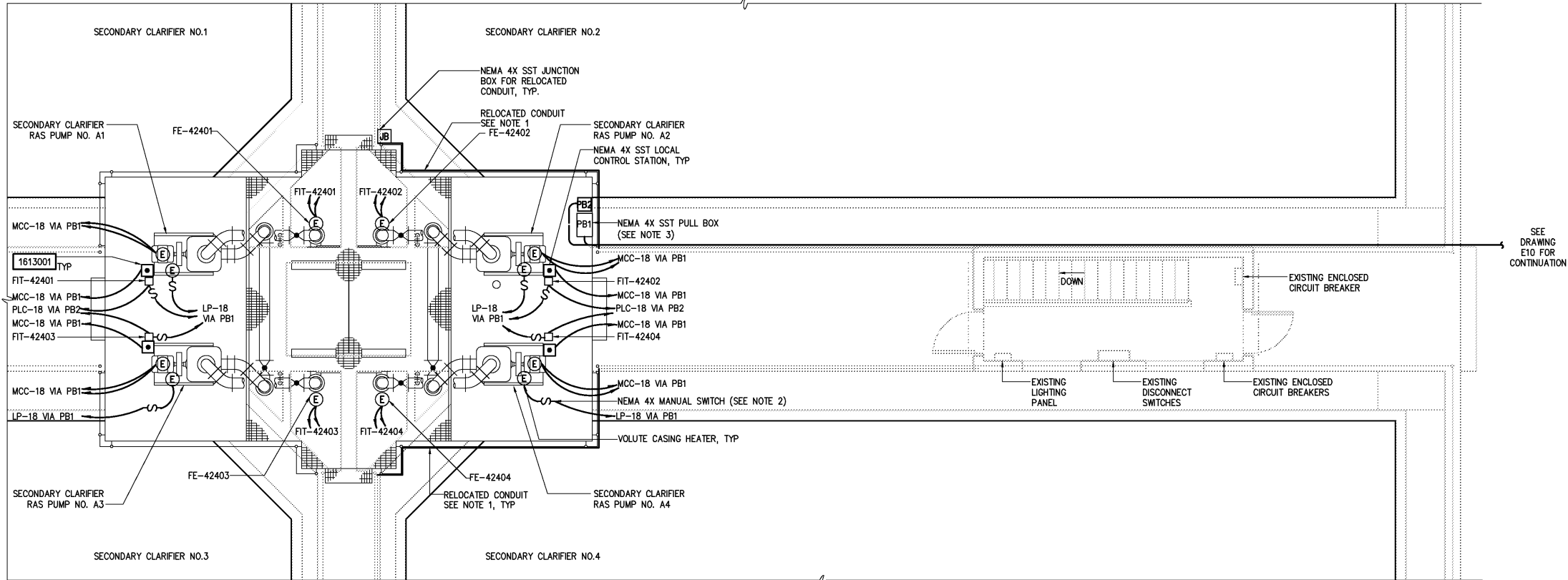


- NOTES:
- 1 THE CONTRACTOR SHALL FURNISH AND INSTALL A NEW CONDUIT ALONG THE NEW HANDRAIL AS SHOWN ON THIS DRAWING TO REPLACE THE CONDUIT TO BE RELOCATED AS SHOWN ON DRAWING E420.
 - 2 THE MANUAL SWITCH FOR THE VOLUTE CASING HEATERS SHALL BE CROUSE HINDS NSSC SERIES WITHOUT OVERLOAD PROTECTION OR EQUAL.
 - 3 THE CONTRACTOR SHALL FURNISH AND INSTALL A METAL BARRIER IN PB1 TO ISOLATE POWER WIRING AND CONTROL WIRING.



PARTIAL TOP PLAN
1/4"=1'-0"

				DESIGNED _____ BRL	RECORD DRAWING	THIS DOCUMENT ORIGINALLY ISSUED FOR CONSTRUCTION AND SEALED BY ROBERT S. DIFIORE, SEAL NO. 22769	THIS DRAWING HAS BEEN MODIFIED TO REFLECT FIELD CHANGES REPORTED BY THE CONTRACTOR OR ANOTHER PARTY, BUT NOT VERIFIED BY THE CERTIFYING ENGINEER. THIS DOCUMENT ORIGINALLY ISSUED AND SEALED BY GERALD J. RATASKY, 026535. THIS MEDIA SHALL NOT BE CONSIDERED A CERTIFIED DOCUMENT.	HAZEN AND SAWYER Environmental Engineers & Scientists 4011 WestChase Blvd, Raleigh, North Carolina 27607	CITY OF ROANOKE VIRGINIA	SECONDARY CLARIFIERS AND RAS PUMPING FACILITIES	THE SCALE BAR SHOWN BELOW MEASURES ONE INCH LONG ON THE ORIGINAL DRAWING.	DATE MARCH 2004	
				DRAWN _____ BRL								H & S JOB NUMBER 30788B	
				CHECKED _____								CONTRACT NUMBER B	DRAWING NUMBER E421
3	AS BUILT	OCT 2007	RLT	PROJ. ENGR. _____ DAN	APPROVED	RONALD L. TAYLOR, SEAL NO. 024649							
2	CONSTRUCTION	MAR 2004	RLT										
1	REGULATORY APPROVAL	NOV 2003	RLT										
NO.	ISSUED FOR	DATE	BY										