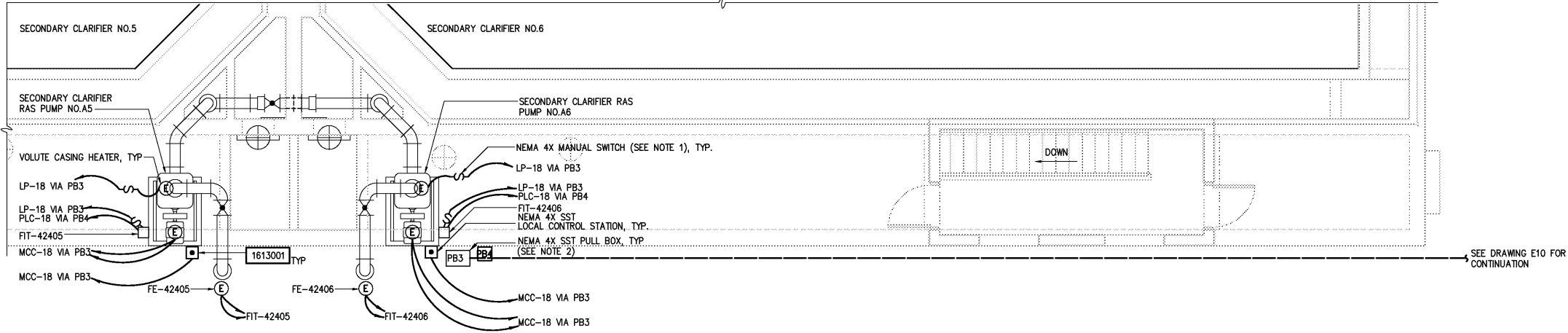
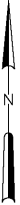
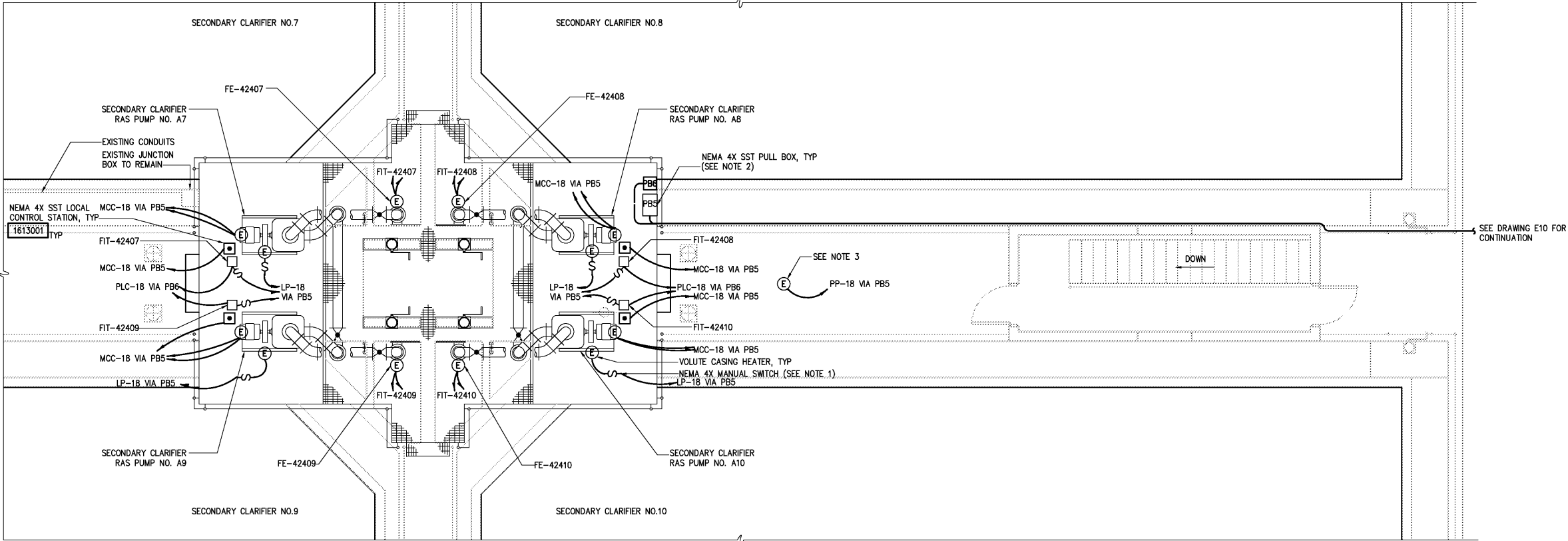


- NOTES:
- 1 THE MANUAL SWITCH FOR THE VOLUTE CASING HEATERS SHALL BE CROUSE HINDS NSSC SERIES WITHOUT OVERLOADS OR EQUAL.
 - 2 THE CONTRACTOR SHALL FURNISH AND INSTALL A METAL BARRIER IN PB3 AND PB5 TO ISOLATE POWER WIRING AND CONTROL WIRING.
 - 3 APPROXIMATE LOCATION OF EXISTING SCUM PUMP MOTOR CONTROLLERS LOCATED BELOW IN PIPE GALLERY.



PARTIAL TOP PLAN
1/4"=1'-0"



PARTIAL TOP PLAN
1/4"=1'-0"

DESIGNED	BRL
DRAWN	BRL
CHECKED	
PROJ. ENGR.	DAN
APPROVED	
NO.	
3	AS BUILT
2	CONSTRUCTION
1	REGULATORY APPROVAL
NO.	ISSUED FOR
	DATE
	BY

THIS DOCUMENT ORIGINALLY ISSUED FOR CONSTRUCTION AND SEALED BY ROBERT S. DIFIORE, SEAL NO. 22769

RECORD DRAWING

THIS DRAWING HAS BEEN MODIFIED TO REFLECT FIELD CHANGES REPORTED BY THE CONTRACTOR OR ANOTHER PARTY, BUT NOT VERIFIED BY THE CERTIFYING ENGINEER. THIS DOCUMENT ORIGINALLY ISSUED AND SEALED BY GERALD J. RATASKY, 026535. THIS MEDIA SHALL NOT BE CONSIDERED A CERTIFIED DOCUMENT.

THIS DOCUMENT ORIGINALLY ISSUED FOR CONSTRUCTION AND SEALED BY RONALD L. TAYLOR, SEAL NO. 024649

HAZEN AND SAWYER
Environmental Engineers & Scientists
4011 WestChase Blvd, Raleigh, North Carolina 27607

CITY OF ROANOKE
VIRGINIA
REGIONAL WATER POLLUTION CONTROL PLANT
PROCESS TRAIN IMPROVEMENTS

SECONDARY CLARIFIERS AND RAS PUMPING FACILITIES
ELECTRICAL
PARTIAL TOP PLANS

THE SCALE BAR SHOWN BELOW MEASURES ONE INCH LONG ON THE ORIGINAL DRAWING.	DATE MARCH 2004
H & S JOB NUMBER 30788B	CONTRACT NUMBER B
DRAWING NUMBER E422	