

NOTES:

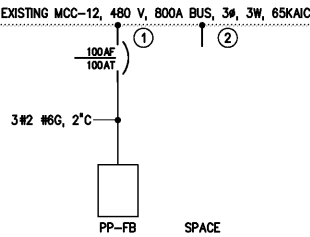
- 1 THE CONTRACTOR SHALL FURNISH AND INSTALL A NEW MOLDED CASE CIRCUIT BREAKER UNIT IN THIS MCC SECTION AS INDICATED ON THE PARTIAL MCC-12 ELEVATION AND PARTIAL SINGLE LINE DIAGRAM ON THIS DRAWING.
- 2 THE MOTOR STARTER FOR THE FILTER BACKWASH PUMP NO.1 IS LOCATED IN MCC-2. THE MOTOR STARTERS FOR FILTER BACKWASH PUMPS NO.2 AND NO.3 ARE LOCATED IN MCC-3. THE CONTRACTOR SHALL FURNISH AND INSTALL A 24VDC PILOT RELAY IN EACH FILTER BACKWASH PUMP MOTOR STARTER SO THAT START/STOP CONTROL OF THE PUMP WILL BE BY NEW PLC-FM WHEN THE EXISTING MOTOR STARTERS ARE IN "REMOTE". THE CONTRACTOR SHALL WIRE THE EXISTING RUN, AUTO, AND FAIL SIGNALS (DRY CONTACT) FROM EACH FILTER BACKWASH PUMP MOTOR STARTER TO PLC-FM.
- 3 THE CONTRACTOR SHALL FIELD VERIFY THE LOCATION OF THE EXISTING FILTER LEVEL INSTRUMENTS.

EXISTING CIRCUIT BREAKER, TYP.

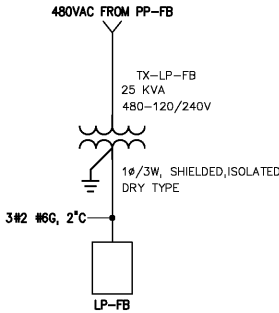
METERING					
CIRCUIT BREAKER CONTROL	SPACE	SPACE	SPACE		
MAIN CIRCUIT BREAKER	AIR SCOUR BLOWER NO.1	AIR SCOUR BLOWER NO.2	AIR SCOUR BLOWER NO.3	①	②

MCC-12 PARTIAL ELEVATION

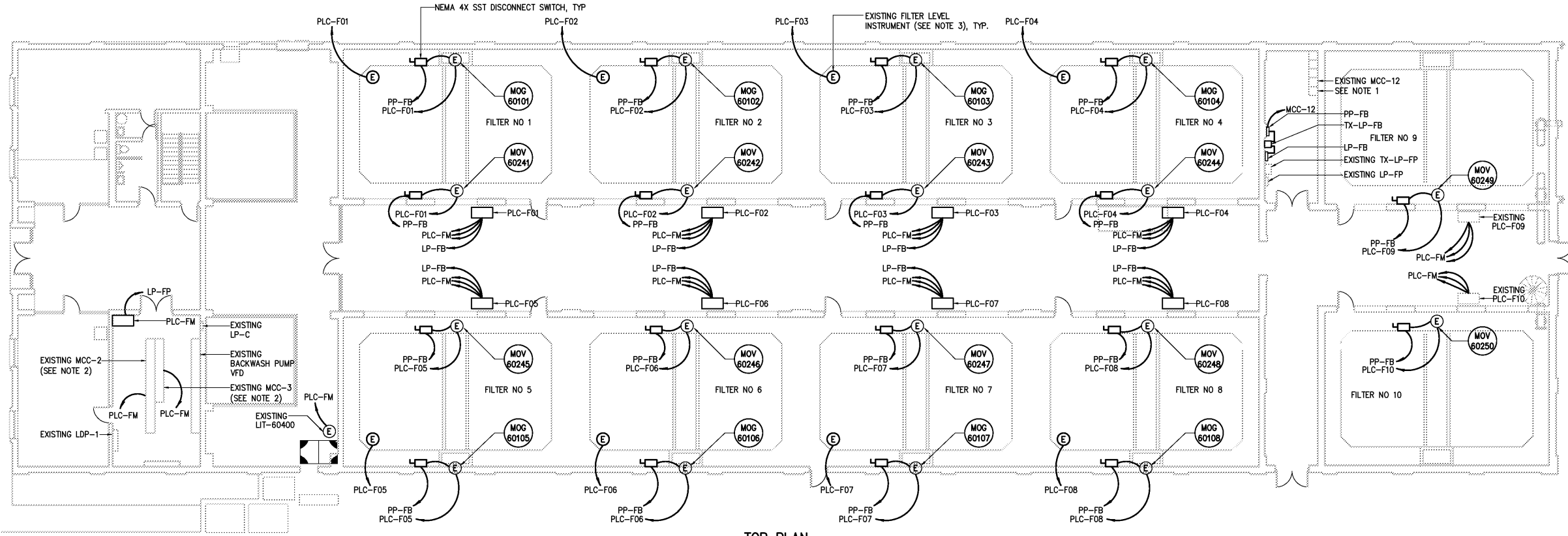
NO SCALE



MCC-12 PARTIAL SINGLE LINE DIAGRAM

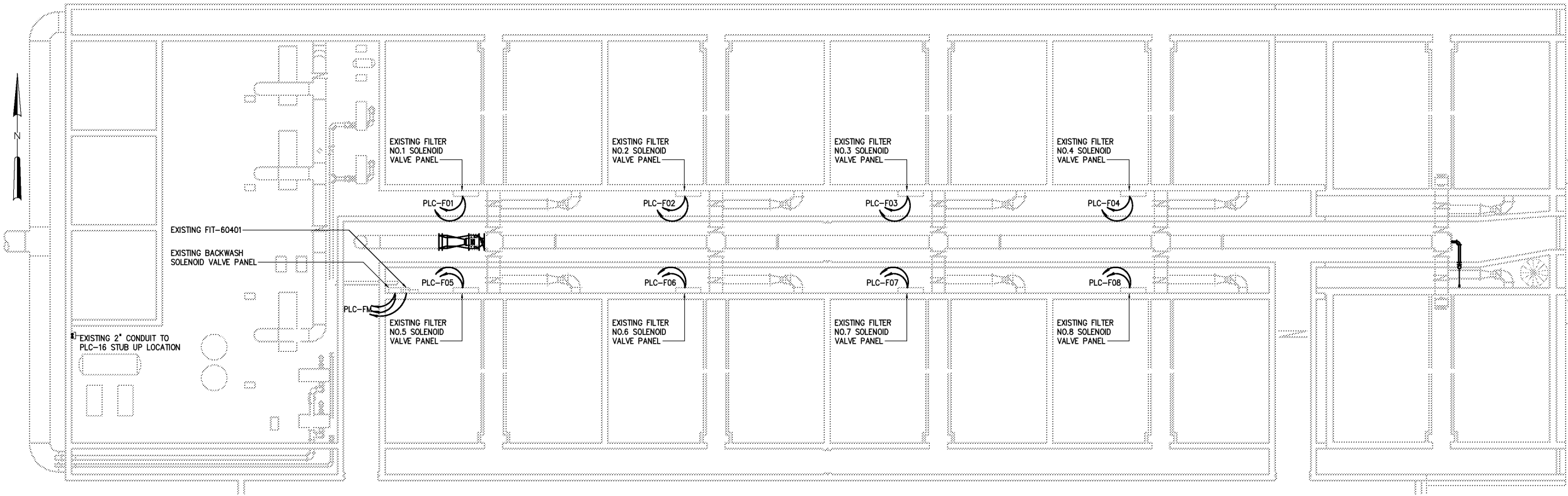


TX-LP-FB WIRING DIAGRAM



TOP PLAN

3/32"=1'-0"



BOTTOM PLAN

3/32"=1'-0"

NO.	DATE	BY	APPROVED
3	APRIL 2004	RLT	
2	MAR 2004	RLT	
1	NOV 2003	RLT	
NO.	DATE	BY	APPROVED

DESIGNED BRL

DRAWN BRL

CHECKED

PROJ. ENGR. DAN

APPROVED

RECORD DRAWING

THIS DOCUMENT ORIGINALLY ISSUED FOR CONSTRUCTION AND SEALED BY ROBERT S. DIFIORE, SEAL NO. 22769

THIS DOCUMENT ORIGINALLY ISSUED FOR CONSTRUCTION AND SEALED BY RONALD L. TAYLOR, SEAL NO. 024649

THIS DRAWING HAS BEEN MODIFIED TO REFLECT FIELD CHANGES REPORTED BY THE CONTRACTOR OR ANOTHER PARTY, BUT NOT VERIFIED BY THE CERTIFYING ENGINEER. THIS DOCUMENT ORIGINALLY ISSUED AND SEALED BY GERALD J. RATASKY, 026535. THIS MEDIA SHALL NOT BE CONSIDERED A CERTIFIED DOCUMENT.

HAZEN AND SAWYER
Environmental Engineers & Scientists
4011 WestChase Blvd, Raleigh, North Carolina 27607

CITY OF ROANOKE
VIRGINIA

REGIONAL WATER POLLUTION CONTROL PLANT
PROCESS TRAIN IMPROVEMENTS

EFFLUENT FILTER MODIFICATIONS

ELECTRICAL

TOP AND BOTTOM PLAN, ELEVATION AND DIAGRAMS

THE SCALE BAR SHOWN BELOW MEASURES ONE INCH LONG ON THE ORIGINAL DRAWING.	DATE MARCH 2004	H & S JOB NUMBER 30788B
	CONTRACT NUMBER B	DRAWING NUMBER E601