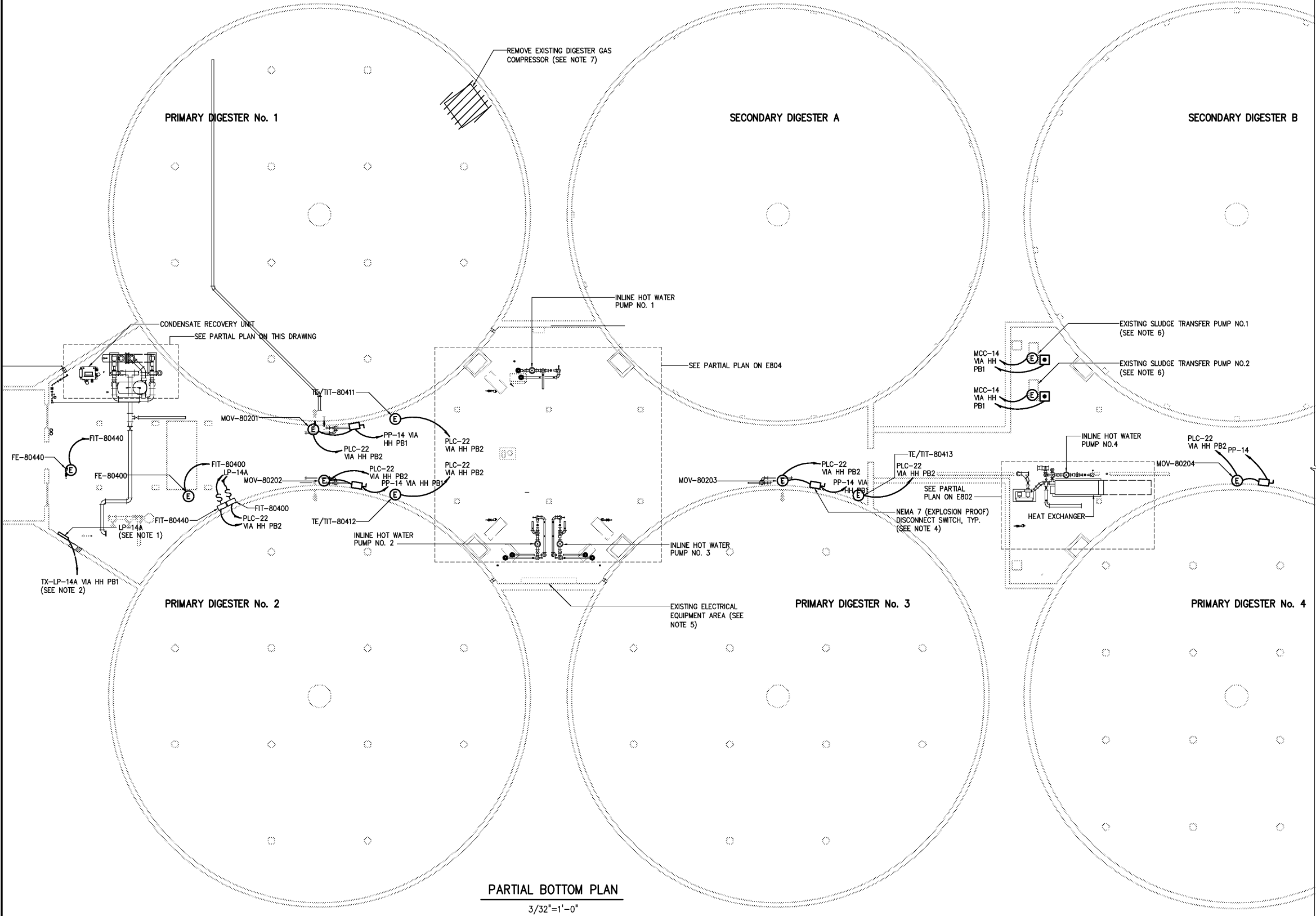
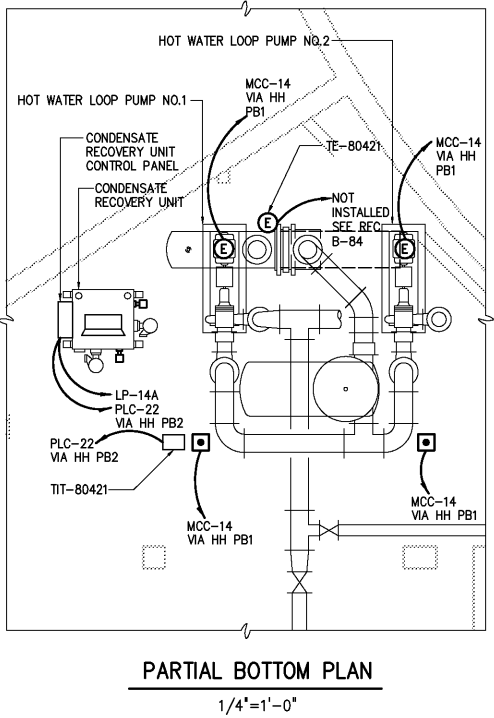


NOTES:

- 1 ALL ELECTRICAL EQUIPMENT INSTALLED IN THE DIGESTER BUILDING SHALL BE RATED FOR USE IN CLASS 1, DIVISION 1, GROUP D ENVIRONMENT.
- 2 MCC-14 AND TX-LP-14A ARE LOCATED IN THE DIGESTER BOILER BUILDING ELECTRICAL ROOM. REFERENCE DRAWING E840.
- 3 REFERENCE DRAWING E801 FOR LOCATIONS OF PB1 AND PB2. REFERENCE DRAWING E840 FOR LOCATION OF TX-LP-14A.
- 4 THE CONTRACTOR SHALL FURNISH AND INSTALL NEMA 7 DISCONNECT SWITCHES FOR ALL 480 VAC MOTOR OPERATED VALVES, 120 VAC MOTOR OPERATED VALVES, AND 120 VAC INSTRUMENTS. DISCONNECT SWITCHES FOR 120 VAC LOADS SHALL BE 1-POLE, 20A, CROUSE-HINDS TYPE "EDS" OR EQUAL. DISCONNECT SWITCHES FOR 480 VAC LOADS SHALL BE 3-POLE, 30A, CROUSE-HINDS TYPE "EBM" OR EQUAL.
- 5 THE CONTRACTOR SHALL REMOVE THE EXISTING NEMA 7 MOTOR STARTERS, DISCONNECT SWITCHES, AND ALL ASSOCIATED WIRE AND CONDUIT FOR THE EXISTING SLUDGE RECIRCULATION PUMPS NO.1-NO.3 LOCATED IN THIS AREA. REFERENCE DRAWING E804 FOR THE EXISTING SLUDGE RECIRCULATION PUMPS NO.1-NO.3 LOCATIONS. THESE EXISTING PUMPS WILL BE CONTROLLED FROM THE NEW MCC-14.
- 6 THE CONTRACTOR SHALL REMOVE THE EXISTING NEMA 7 MOTOR STARTER, DISCONNECT SWITCH, AND ALL ASSOCIATED WIRE AND CONDUIT FOR THE EXISTING SLUDGE TRANSFER PUMPS NO.1 AND NO.2. THE CONTRACTOR SHALL FIELD VERIFY THE LOCATIONS OF THESE DEVICES. THESE EXISTING PUMPS WILL BE CONTROLLED FROM THE NEW MCC-14.
- 7 THE CONTRACTOR SHALL DISCONNECT AND REMOVE THE EXISTING DIGESTER GAS COMPRESSOR LOCATED ABOVE PRIMARY DIGESTER NO.1. THE CONTRACTOR SHALL ALSO REMOVE THE EXISTING NEMA 7 MOTOR STARTER, DISCONNECT SWITCH, AND ALL WIRE AND CONDUIT ASSOCIATED WITH THE EXISTING DIGESTER GAS COMPRESSOR. THE CONTRACTOR SHALL FIELD VERIFY THE LOCATIONS OF THE EXISTING NEMA 7 MOTOR STARTERS AND DISCONNECT SWITCHES.



SEE DRAWING E801 FOR CONTINUATION



				DESIGNED	BRL
				DRAWN	BRL
				CHECKED	
3	AS BUILT	OCT 2007	RLT	PROJ. ENGR.	DAN
2	CONSTRUCTION	MAR 2004	RLT		
1	REGULATORY APPROVAL	NOV 2003	RLT		
NO.	ISSUED FOR	DATE	BY	APPROVED	

THIS DOCUMENT ORIGINALLY ISSUED FOR CONSTRUCTION AND SEALED BY ROBERT S. DIFIORE, SEAL NO. 22769

THIS DOCUMENT ORIGINALLY ISSUED FOR CONSTRUCTION AND SEALED BY RONALD L. TAYLOR, SEAL NO. 024649

RECORD DRAWING

THIS DRAWING HAS BEEN MODIFIED TO REFLECT FIELD CHANGES REPORTED BY THE CONTRACTOR OR ANOTHER PARTY, BUT NOT VERIFIED BY THE CERTIFYING ENGINEER. THIS DOCUMENT ORIGINALLY ISSUED AND SEALED BY GERALD J. RATASKY, 026535. THIS MEDIA SHALL NOT BE CONSIDERED A CERTIFIED DOCUMENT.

HAZEN AND SAWYER
Environmental Engineers & Scientists
4011 WestChase Blvd, Raleigh, North Carolina 27607

CITY OF ROANOKE
VIRGINIA

REGIONAL WATER POLLUTION CONTROL PLANT
PROCESS TRAIN IMPROVEMENTS

DIGESTER MODIFICATIONS
ELECTRICAL
PARTIAL BOTTOM PLANS

THE SCALE BAR SHOWN BELOW MEASURES ONE INCH LONG ON THE ORIGINAL DRAWING.	DATE	MARCH 2004
	H & S JOB NUMBER	30788B
	CONTRACT NUMBER	B
	DRAWING NUMBER	E800