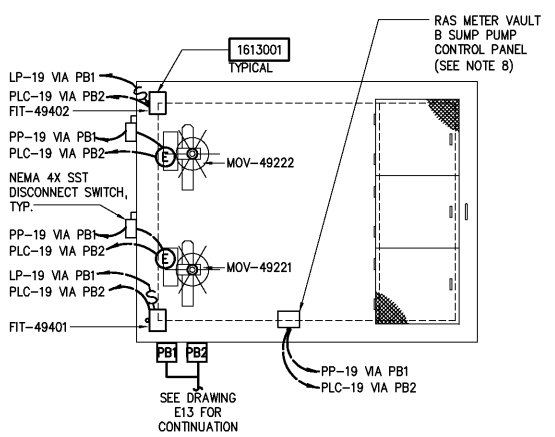


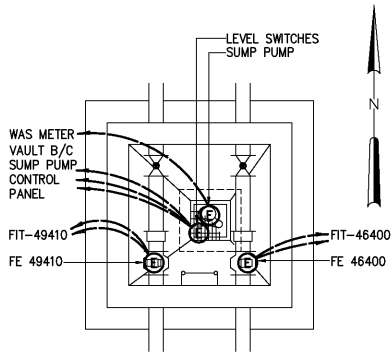
**RAS METER VAULT B
BOTTOM PLAN**

1/4"=1'-0"



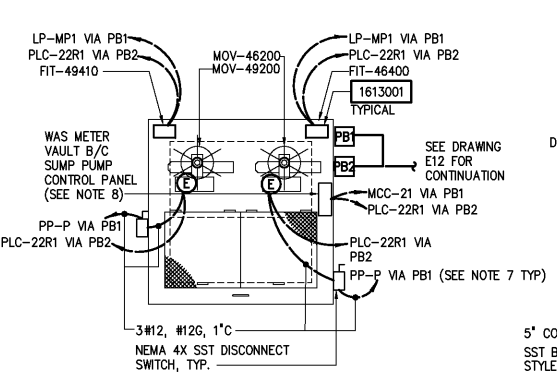
**RAS METER VAULT B
TOP PLAN**

1/4"=1'-0"



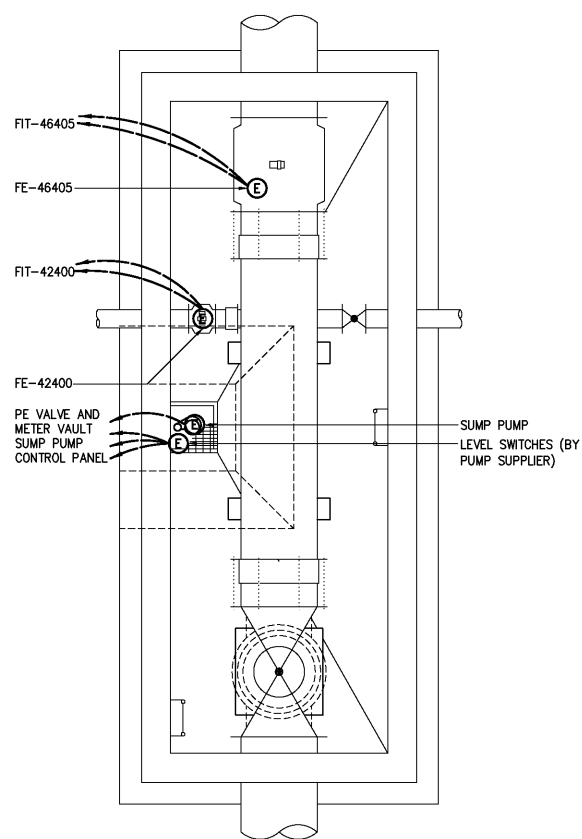
**WAS METER VAULT B/C
BOTTOM PLAN**

1/4"=1'-0"



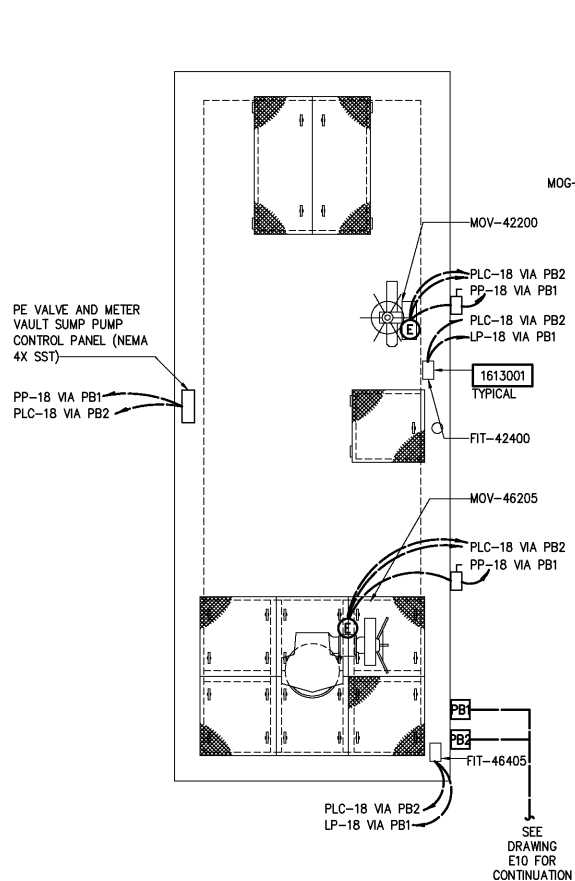
**WAS METER VAULT B/C
TOP PLAN**

1/4"=1'-0"



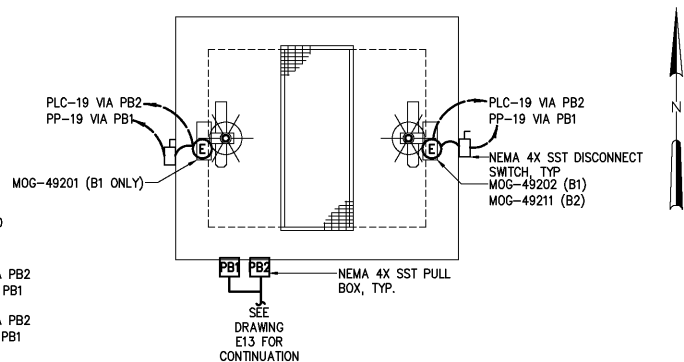
**PE VALVE AND
METER VAULT - BOTTOM PLAN**

1/4"=1'-0"



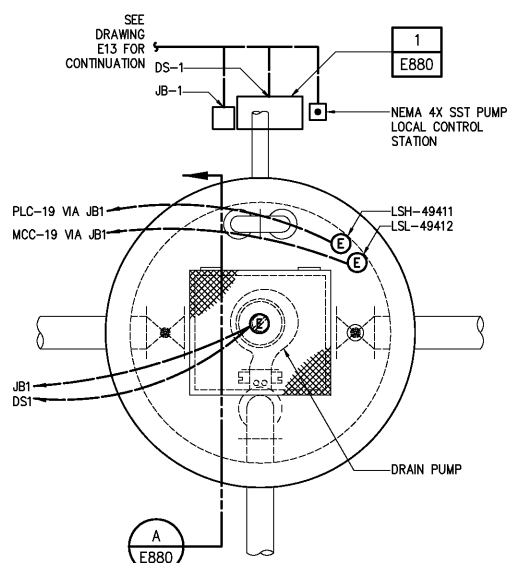
**PE VALVE AND
METER VAULT - TOP PLAN**

1/4"=1'-0"



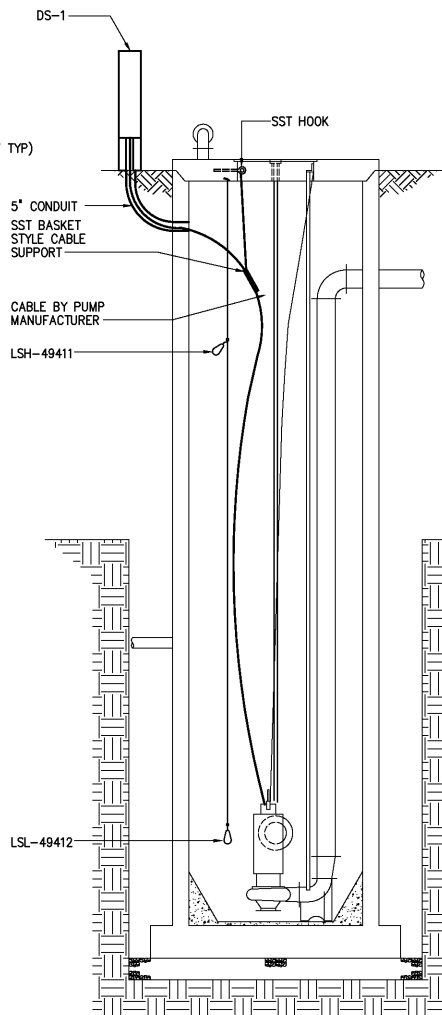
**SCE JUNCTION BOX B1 (B2 SIMILAR)
TOP PLAN**

1/4"=1'-0"

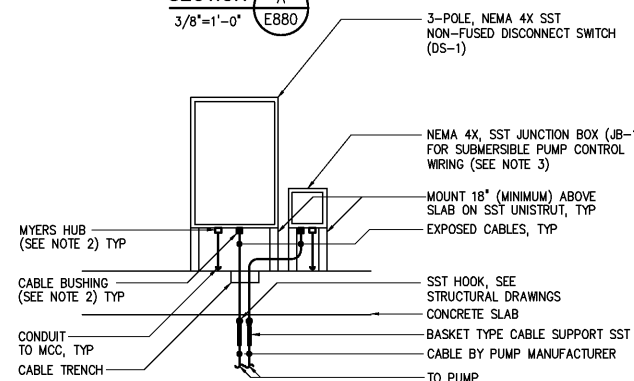


**SECONDARY CLARIFIER DRAIN
PUMP STATION - TOP PLAN**

3/8"=1'-0"



**SECTION A
3/8"=1'-0"**



SUBMERSIBLE PUMP CONNECTION

**DETAIL 1
NTS**

NOTES:

- 1 SEE JUNCTION BOX B2 (NOT SHOWN) WILL BE SIMILAR TO SCE JUNCTION BOX B1.
- 2 THE CONTRACTOR SHALL COORDINATE THE SIZE AND QUANTITY OF SUBMERSIBLE POWER AND CONTROL CABLE REQUIRED WITH THE SUBMERSIBLE PUMP MANUFACTURER. THE CONTRACTOR SHALL FURNISH AND INSTALL CABLE BUSHINGS AS NECESSARY AT THE POINTS WHERE THE SUBMERSIBLE PUMP CABLES ENTER THE DISCONNECT SWITCHES AND JUNCTION BOXES TO MAINTAIN NEMA 4X INTEGRITY. THE CONTRACTOR SHALL FURNISH AND INSTALL ALL CABLE SUPPORTS, CONDUIT, ETC., AS REQUIRED TO SUPPORT AND INSTALL ALL CABLE BY THE PUMP MANUFACTURER. THE OPENINGS IN THE DISCONNECT SWITCHES SHALL BE SIZED SO THAT THE CABLES AND THEIR TERMINATIONS MAY BE COMPLETELY REMOVED FROM THE DISCONNECT ASSEMBLY.
- 3 THE CONTRACTOR SHALL FURNISH AND INSTALL A NEMA 4X SST JUNCTION BOX WITH A TERMINAL STRIP INSIDE FOR TERMINATION OF THE SUBMERSIBLE PUMP CONTROL WIRING. THE CONTRACTOR SHALL COORDINATE TERMINAL STRIP SIZE WITH THE PUMP SUPPLIER AND THE WIRING REQUIREMENTS INDICATED IN THE CONTRACT DRAWINGS. THE TERMINAL STRIP SHALL CONTAIN AT LEAST 25% SPARE TERMINALS.
- 4 THE CONTROL WIRE JUNCTION BOX IS NOT SHOWN IN SECTION-A FOR CLARITY. THE CONTROL WIRE AND CABLE TO EACH CONTROL WIRE JUNCTION BOX SHALL BE INSTALLED SIMILAR TO THE WIRE AND CABLE SHOWN IN SECTION-A.
- 5 THE CONTRACTOR SHALL ROUTE THE CABLE FROM THE SUBMERSIBLE PUMPS TO THE NEMA 4X SST DISCONNECT SWITCHES AND CONTROL WIRE JUNCTION BOXES PER DETAIL 1/E880 ON THIS SHEET.
- 6 THE CONTRACTOR SHALL COORDINATE THE NUMBER OF TERMINATIONS REQUIRED ON THE LOAD SIDE OF THE DISCONNECT SWITCH TO TERMINATE THE CONDUCTORS SUPPLIED WITH THE SUBMERSIBLE PUMPS. THE DISCONNECT SWITCH MAY NEED TO BE FURNISHED WITH A LUG KIT TO PROPERLY TERMINATE THE CONDUCTORS SUPPLIED WITH THE SUBMERSIBLE PUMPS. ANY MODIFICATIONS TO THE DISCONNECT SWITCHES SHALL NOT VIOLATE THE MINIMUM BENDING RADIUS OF THE SUBMERSIBLE PUMP CONDUCTORS AS REQUIRED BY THE NEC.
- 7 THE CONTRACTOR SHALL FURNISH AND INSTALL A NEW 20AT, 3-POLE, 65KAIC, 480VAC CIRCUIT BREAKER IN THE EXISTING PP-P TO SUPPLY POWER TO MOV-46200 & MOV-49200. REFERENCE DRAWING E742 FOR PP-P LOCATION. PP-P IS A 100A, 480/277VAC, 65KAIC, CUTLER HAMMER PRL-2A PANELBOARD.
- 8 THE CONTRACTOR SHALL FURNISH AND INSTALL ALL SUMP PUMP CONTROL PANELS AND DISCONNECT SWITCHES 36" ABOVE THE SLAB ON 2" STAINLESS STEEL UNISTRUT.

				DESIGNED	BRL
				DRAWN	BRL
				CHECKED	
3	AS BUILT	OCT 2007	RLT	PROJ. ENGR.	DAN
2	CONSTRUCTION	MAR 2004	RLT		
1	REGULATORY APPROVAL	NOV 2003	RLT		
NO.	ISSUED FOR	DATE	BY	APPROVED	

THIS DOCUMENT ORIGINALLY ISSUED FOR CONSTRUCTION AND SEALED BY ROBERT S. DIFIORE, SEAL NO. 22769

RECORD DRAWING

THIS DRAWING HAS BEEN MODIFIED TO REFLECT FIELD CHANGES REPORTED BY THE CONTRACTOR OR ANOTHER PARTY, BUT NOT VERIFIED BY THE CERTIFYING ENGINEER. THIS DOCUMENT ORIGINALLY ISSUED AND SEALED BY GERALD J. RATASKY, 026535. THIS MEDIA SHALL NOT BE CONSIDERED A CERTIFIED DOCUMENT.

THIS DOCUMENT ORIGINALLY ISSUED FOR CONSTRUCTION AND SEALED BY RONALD L. TAYLOR, SEAL NO. 024649

HAZEN AND SAWYER
Environmental Engineers & Scientists
4011 WestChase Blvd, Raleigh, North Carolina 27607

**CITY OF ROANOKE
VIRGINIA**

**REGIONAL WATER POLLUTION CONTROL PLANT
PROCESS TRAIN IMPROVEMENTS**

**MISCELLANEOUS YARD STRUCTURES
ELECTRICAL
PLANS, SECTIONS AND DETAILS**

THE SCALE BAR SHOWN BELOW MEASURES ONE INCH LONG ON THE ORIGINAL DRAWING.	DATE	MARCH 2004
	H & S JOB NUMBER	30788B
	CONTRACT NUMBER	B
	DRAWING NUMBER	E880