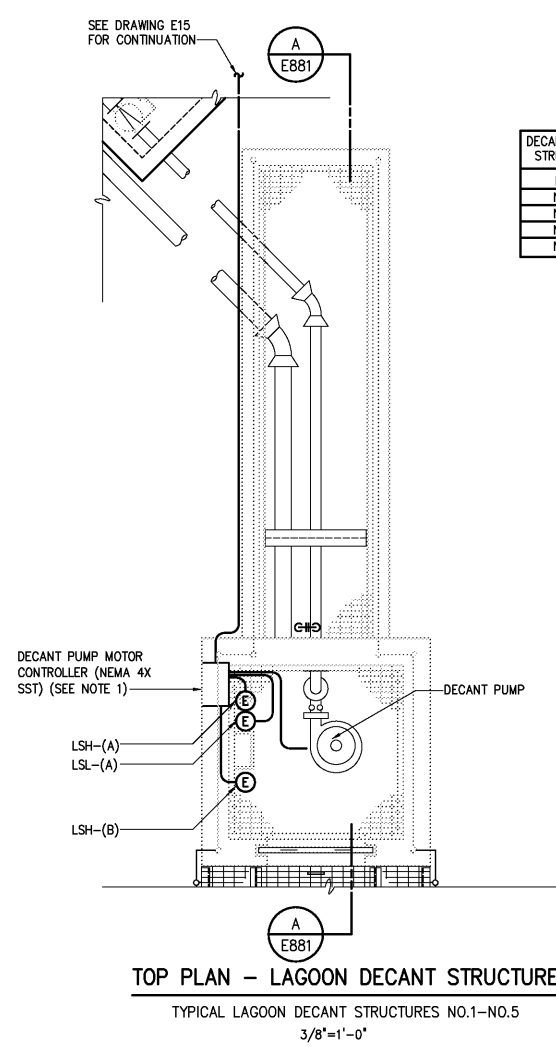
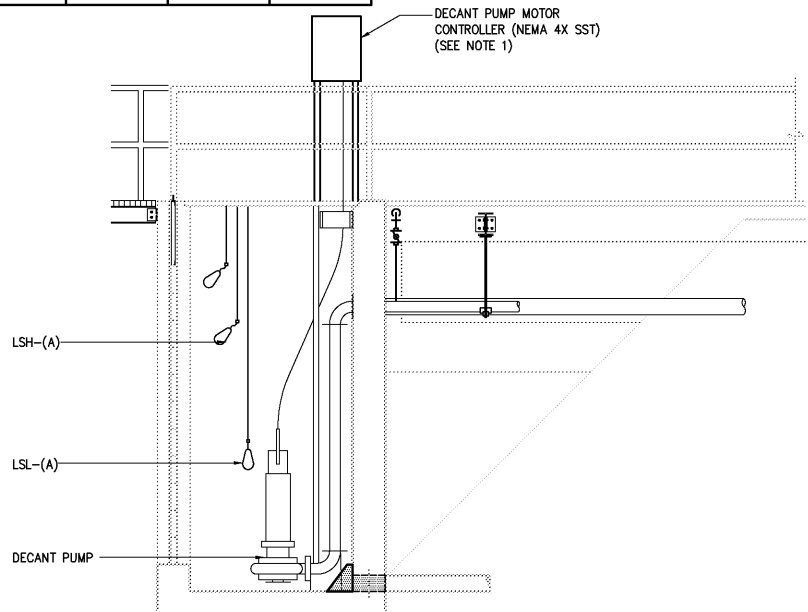


DECANT PUMP
TYPICAL DECANT PUMPS NO.1-NO.5
ELEMENTARY CONTROL SCHEMATIC

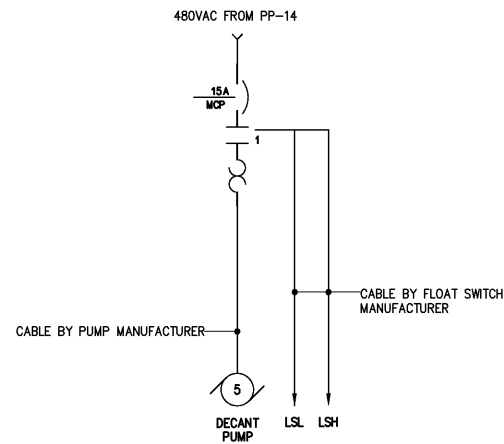
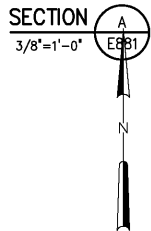


TOP PLAN - LAGOON DECANT STRUCTURE
TYPICAL LAGOON DECANT STRUCTURES NO.1-NO.5
3/8"=1'-0"

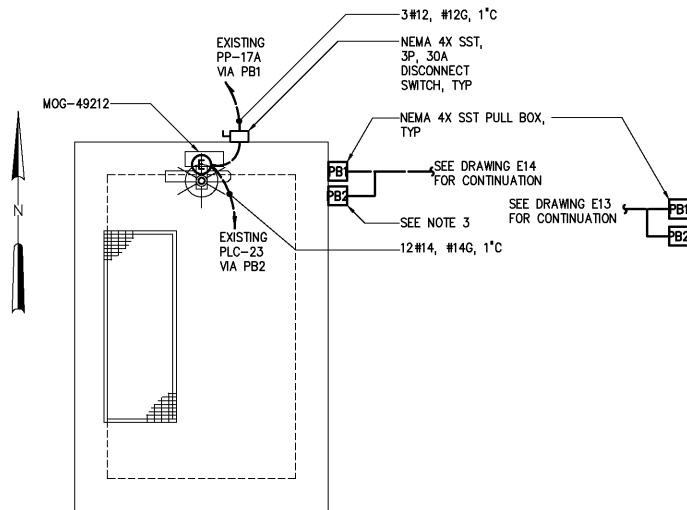
DECANT PUMP STRUCTURE	LSL-A	LSH-A	LSH-B
NO.1	88401	88411	88421
NO.2	88402	88412	88422
NO.3	88403	88413	88423
NO.4	88404	88414	88424
NO.5	88405	88415	88425



LAGOON DECANT STRUCTURE

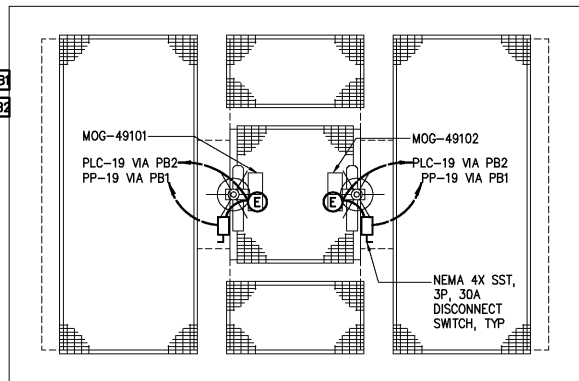


DECANT PUMP MOTOR CONTROLLER WIRING DIAGRAM
TYPICAL FOR DECANT PUMP NO.1-NO.5 MOTOR CONTROLLERS

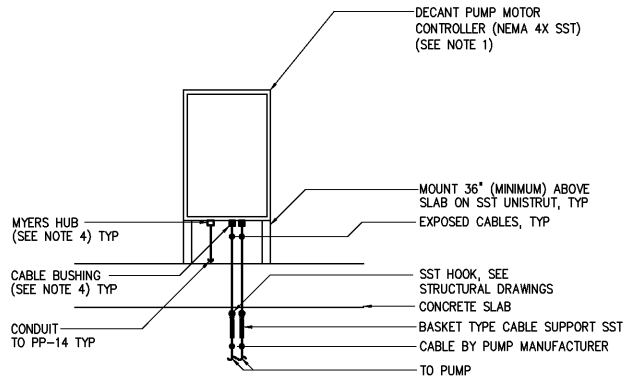


**SCE JUNCTION BOX D
TOP PLAN (SEE NOTE 2)**
1/4"=1'-0"

NOTE: REFERENCE DRAWING E14 FOR THE LOCATION OF THE EXISTING PP-17B AND EXISTING PLC-23.



MIXED LIQUOR DISTRIBUTION BOX B - TOP PLAN
1/4"=1'-0"



SUBMERSIBLE PUMP CONNECTION

DETAIL	1
NTS	E881

NOTES:

- 1 THE CONTRACTOR SHALL FURNISH AND INSTALL THE DECANT PUMP MOTOR CONTROLLER 36" ABOVE THE SLAB ON 2" STAINLESS STEEL UNISTRUT. THE DECANT PUMP MOTOR CONTROLLER SHALL BE FURNISHED AND INSTALLED PER DETAIL 1/E881 ON THIS SHEET.
- 2 THE CONTRACTOR SHALL SUPPLY MOG-49212 FROM AN EXISTING SPARE 20AT CIRCUIT BREAKER IN THE EXISTING PP-17B LOCATED IN THE EXISTING DISINFECTION BUILDING. THE DISINFECTION BUILDING WILL BE CONSTRUCTED UNDER PHASE A.
- 3 COIL SPARE #14 WIRES IN THIS JUNCTION BOX. THESE WIRES WILL BE USED FOR A NEW MOTOR OPERATED GATE TO BE INSTALLED IN THE FUTURE.
- 4 THE CONTRACTOR SHALL COORDINATE THE SIZE AND QUANTITY OF SUBMERSIBLE POWER AND CONTROL CABLE REQUIRED WITH THE SUBMERSIBLE PUMP MANUFACTURER. THE CONTRACTOR SHALL FURNISH AND INSTALL CABLE BUSHINGS AS NECESSARY AT THE POINTS WHERE THE SUBMERSIBLE PUMP CABLES ENTER THE MOTOR CONTROLLER TO MAINTAIN NEMA 4X INTEGRITY. THE CONTRACTOR SHALL FURNISH AND INSTALL ALL CABLE SUPPORTS, CONDUIT, ETC. AS REQUIRED TO SUPPORT AND INSTALL ALL CABLE BY THE PUMP MANUFACTURER. THE OPENINGS IN THE MOTOR CONTROLLER SHALL BE SIZED SO THAT THE CABLES AND THEIR TERMINATIONS MAY BE COMPLETELY REMOVED FROM THE MOTOR CONTROLLER ASSEMBLY.
- 5 THE CONTRACTOR SHALL FURNISH AND INSTALL ALL MOTOR CONTROLLERS AND DISCONNECT SWITCHES 36" ABOVE THE SLAB ON 2" STAINLESS STEEL UNISTRUT.

				DESIGNED	BRL
				DRAWN	BRL
				CHECKED	
3	AS BUILT	OCT 2007	RLT	PROJ. ENGR.	DAN
2	CONSTRUCTION	MAR 2004	RLT		
1	REGULATORY APPROVAL	NOV 2003	RLT		
NO.	ISSUED FOR	DATE	BY	APPROVED	

THIS DOCUMENT ORIGINALLY ISSUED FOR CONSTRUCTION AND SEALED BY ROBERT S. DIFIORE, SEAL NO. 22769

RECORD DRAWING

THIS DRAWING HAS BEEN MODIFIED TO REFLECT FIELD CHANGES REPORTED BY THE CONTRACTOR OR ANOTHER PARTY, BUT NOT VERIFIED BY THE CERTIFYING ENGINEER. THIS DOCUMENT ORIGINALLY ISSUED AND SEALED BY GERALD J. RATASKY, 026535. THIS MEDIA SHALL NOT BE CONSIDERED A CERTIFIED DOCUMENT.

THIS DOCUMENT ORIGINALLY ISSUED FOR CONSTRUCTION AND SEALED BY RONALD L. TAYLOR, SEAL NO. 024649

HAZEN AND SAWYER
Environmental Engineers & Scientists
4011 WestChase Blvd, Raleigh, North Carolina 27607

CITY OF ROANOKE
VIRGINIA

**REGIONAL WATER POLLUTION CONTROL PLANT
PROCESS TRAIN IMPROVEMENTS**

MISCELLANEOUS YARD STRUCTURES

ELECTRICAL

PLANS, DIAGRAMS, & ELEMENTARY CONTROL SCHEMATIC

THE SCALE BAR SHOWN BELOW MEASURES ONE INCH LONG ON THE ORIGINAL DRAWING.	DATE	MARCH 2004
	H & S JOB NUMBER	30788B
	CONTRACT NUMBER	B
	DRAWING NUMBER	E881