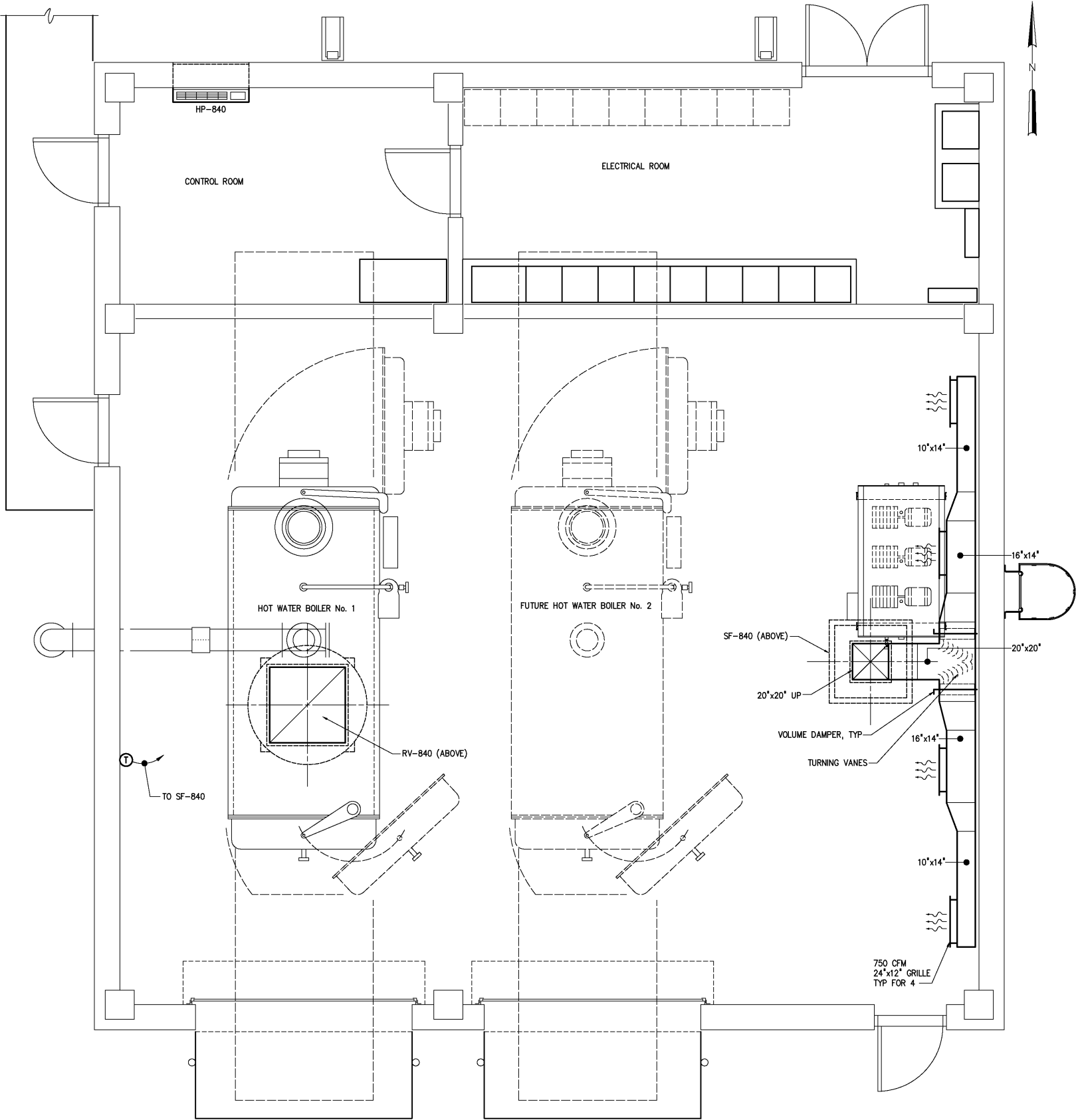


- NOTES:
- 1 DUCT AND DUCT HARDWARE SHALL BE ALUMINUM CONSTRUCTION.
  - 2 DUCTS SHALL BE SECURELY HUNG AND SUPPORTED FROM BUILDING STRUCTURE WITH ANGLES AND RODS. USE OF STRAP OR STRAP HANGERS IS PROHIBITED.
  - 3 SUPPLY GRILLES SHALL BE METAL AIRE SERIES H4004D WITH OPPOSED BLADE DAMPERS.



TOP PLAN  
3/8"=1'-0"

PACKAGE TERMINAL HEAT PUMP									
MARK	LOCATION	TOTAL COOLING CAPACITY	CFM	FAN HP	VOLTAGE	PHASE	MANUFACTURER	MODEL	REMARKS
BOILER BUILDING									
HP-840	CONTROL ROOM	7,300	195	1/2	208/230	1	TRANE	PTH007	1,2,3,4,5,6
REMARKS: 1. 1.6 KW HEATER. 2. 60 CFM OUTSIDE AIR, POWER OUTSIDE VENT. 3. WALL SLEEVE, DRAIN KIT, EXTENDED SLEEVE WITH BLOCKS INSTALLED PER MFR RECOMMENDATIONS. 4. OUTDOOR GRILLE. 5. CIRCUIT BREAKER KIT. 6. CONDENSATE REMOVAL PUMP.									

VENTILATION SCHEDULE											
MARK	LOCATION	FAN TYPE	DRIVE TYPE	CFM	SP	HP	RPM	VOLTAGE	MANUFACTURER	MODEL NO	REMARKS
BOILER BUILDING											
SF-840	ROOF	CENTRIFUGAL	BELT	3,000	0.375	1/2	498	460	GREENHECK	RSFP-150-5	1,3,5,6,7,8,9,10,11,14
RV-840	ROOF	-	-	3,000	0.016	-	-	-	GREENHECK	GRSR-42	2,5,6,7
REMARKS: 1. HEAVY DUTY NEMA-4X DISCONNECT SWITCH, HEAVY DUTY MOUNTED AND WIRED. 2. GRAVITY DAMPERS. 3. UL 705. 4. STAINLESS STEEL SHAFT AND FASTENERS. 5. HI-PRO POLYESTER COATING ENTIRE UNIT. 6. STAINLESS STEEL BIRDSCREEN. 7. 12" HIGH ROOF CURB, LINER, 1.5" INSUL.. 8. TEFC MOTOR. 9. ALUMINUM RUB RING. 10. MOTORIZED DAMPER. 11. CURB ADAPTOR. 12. CONCRETE CURB. 13. CLASS 1 DIVISION 1 GROUP D EXPLOSION PROOF DISCONNECT SWITCH, MOUNTED AND WIRED. 14. 1" WASHABLE ALUMINUM FILTER. 15. CLASS 1 DIVISION 1 GROUP D EXPLOSION PROOF MOTOR WITH THERMAL OVERLOADS. 16. GRIP NOTCHED BELTS.											

				DESIGNED	CMB	RECORD DRAWING	HAZEN AND SAWYER Environmental Engineers & Scientists 4011 WestChase Blvd, Raleigh, North Carolina 27607	CITY OF ROANOKE VIRGINIA	BOILER BUILDING  HVAC  TOP PLAN AND SCHEDULES	THE SCALE BAR SHOWN BELOW MEASURES ONE INCH LONG ON THE ORIGINAL DRAWING.	DATE MARCH 2004	
				DRAWN	HGM						H & S JOB NUMBER	30788B
				CHECKED							CONTRACT NUMBER	DRAWING NUMBER
				PROJ. ENGR.	DAN						B	H840
3	AS BUILT	OCT 2007	RLT	THIS DOCUMENT ORIGINALLY ISSUED FOR CONSTRUCTION AND SEALED BY RONALD L. TAYLOR, SEAL NO. 024649	THIS DRAWING HAS BEEN MODIFIED TO REFLECT FIELD CHANGES REPORTED BY THE CONTRACTOR OR ANOTHER PARTY, BUT NOT VERIFIED BY THE CERTIFYING ENGINEER. THIS DOCUMENT ORIGINALLY ISSUED AND SEALED BY CHARLES M. BULLARD, SEAL NUMBER 036668. THIS MEDIA SHALL NOT BE CONSIDERED A CERTIFIED DOCUMENT.							
2	CONSTRUCTION	MAR 2004	RLT									
1	REGULATORY APPROVAL	NOV 2003	RLT									
NO.	ISSUED FOR	DATE	BY					APPROVED				