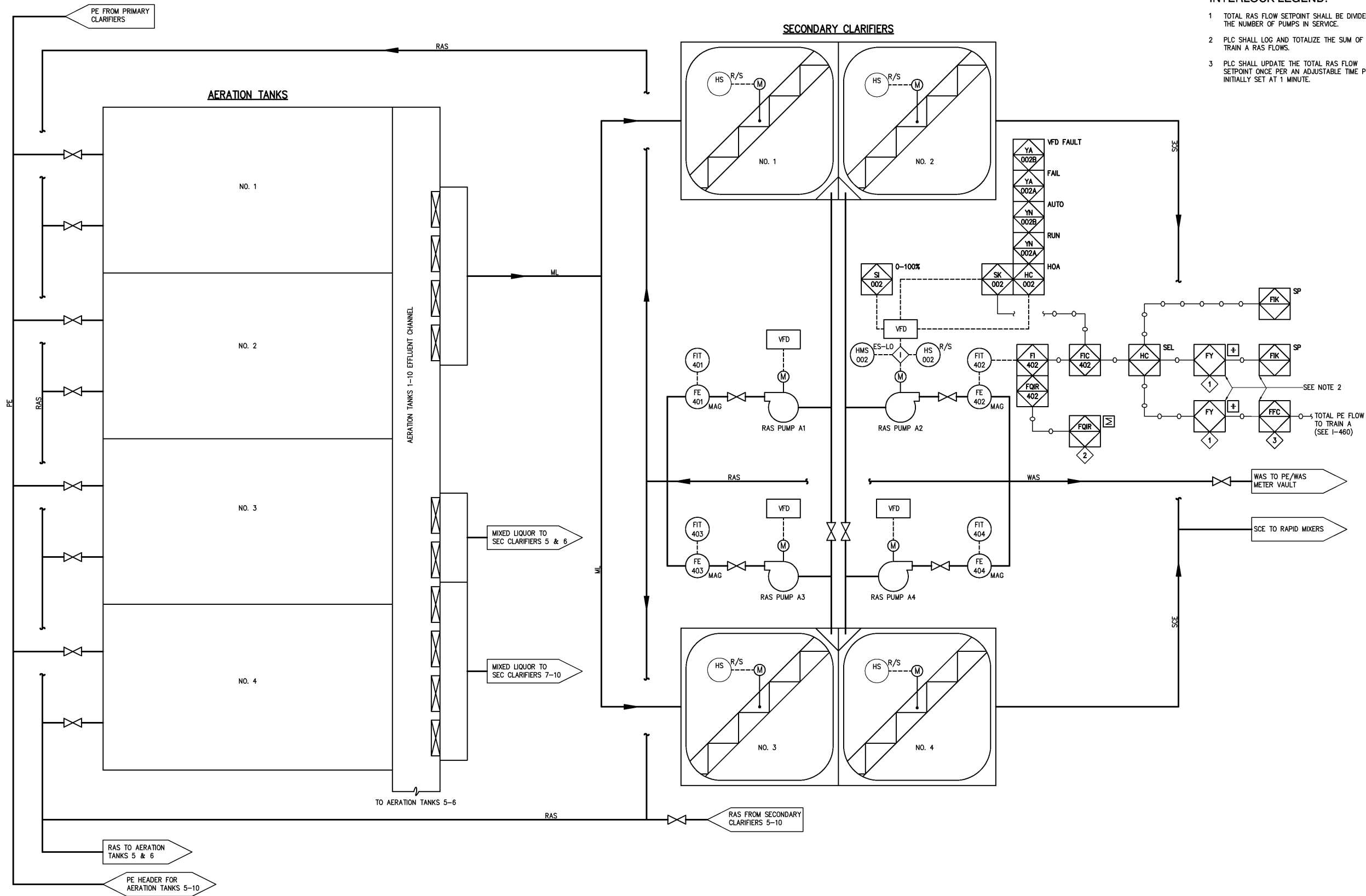


SECONDARY TREATMENT FLOW DIAGRAM



- NOTES:
- 1 ALL SECONDARY TREATMENT TRAIN A TAG NUMBERS ARE PRECEDED BY "42".
  - 2 THESE SOFTWARE FUNCTIONS ARE COMMON TO ALL TRAIN A RAS PUMPS.
- INTERLOCK LEGEND:
- 1 TOTAL RAS FLOW SETPOINT SHALL BE DIVIDED BY THE NUMBER OF PUMPS IN SERVICE.
  - 2 PLC SHALL LOG AND TOTALIZE THE SUM OF ALL TRAIN A RAS FLOWS.
  - 3 PLC SHALL UPDATE THE TOTAL RAS FLOW SETPOINT ONCE PER AN ADJUSTABLE TIME PERIOD INITIALLY SET AT 1 MINUTE.

DESIGNED	DBE	THIS DOCUMENT ORIGINALLY ISSUED FOR CONSTRUCTION AND SEALED BY ROBERT S. DIFIORE, SEAL NO. 22769	RECORD DRAWING	HAZEN AND SAWYER Environmental Engineers & Scientists 4011 WestChase Blvd, Raleigh, North Carolina 27607	CITY OF ROANOKE VIRGINIA	INSTRUMENTATION AND CONTROL SECONDARY TREATMENT TRAIN A - SHEET 1 PROCESS AND INSTRUMENTATION DIAGRAM	THE SCALE BAR SHOWN BELOW MEASURES ONE INCH LONG ON THE ORIGINAL DRAWING.	DATE MARCH 2004
DRAWN	JAD	THIS DOCUMENT ORIGINALLY ISSUED FOR CONSTRUCTION AND SEALED BY RONALD L. TAYLOR, SEAL NO. 024649			REGIONAL WATER POLLUTION CONTROL PLANT PROCESS TRAIN IMPROVEMENTS			H & S JOB NUMBER 30788B
CHECKED								CONTRACT NUMBER B
PROJ. ENGR.	DAN							DRAWING NUMBER 1420
NO.	AS BUILT	OCT 2007	RLT					
2	CONSTRUCTION	MAR 2004	RLT					
1	REGULATORY APPROVAL	NOV 2003	RLT					
NO.	ISSUED FOR	DATE	BY	APPROVED				