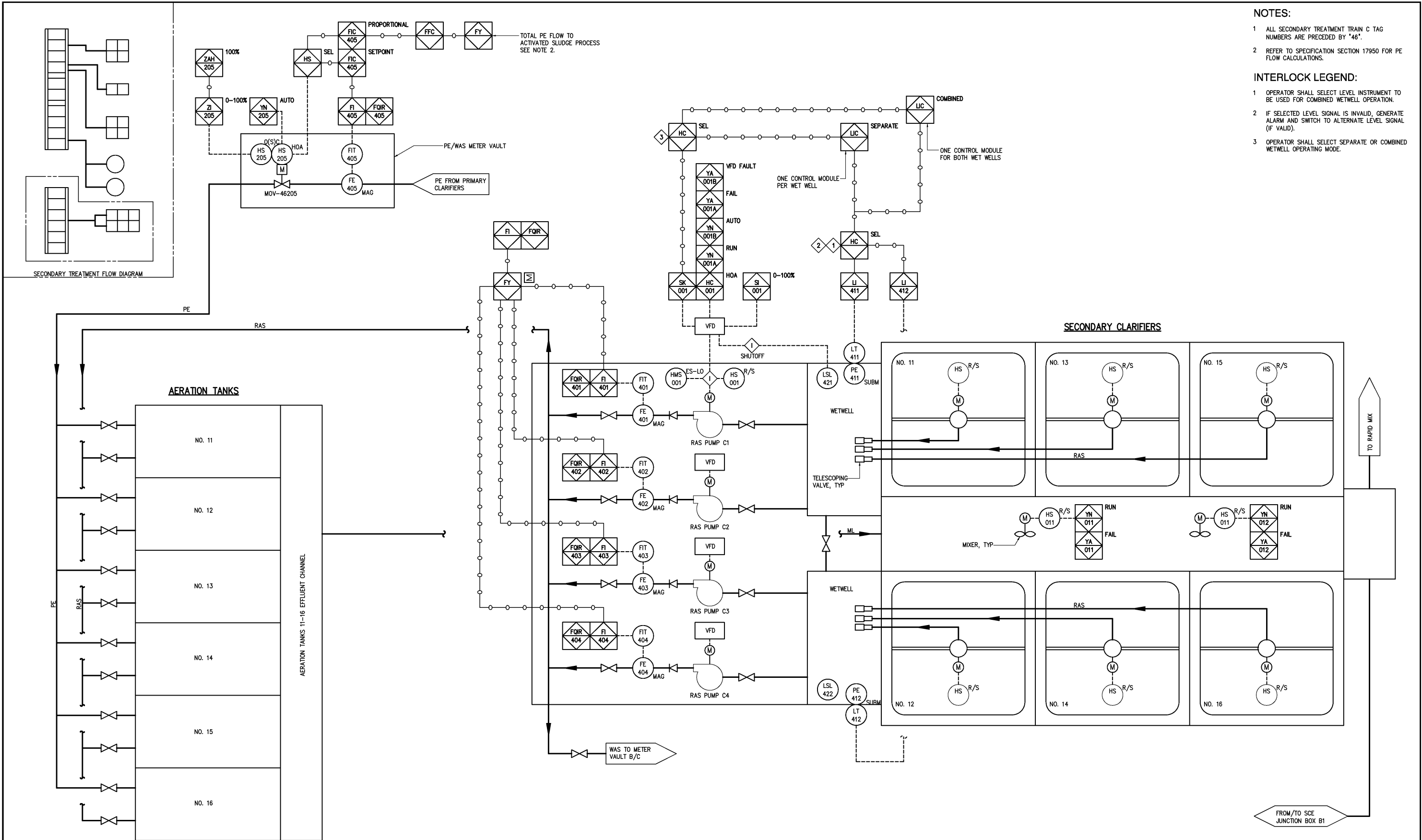


NOTES:

- 1 ALL SECONDARY TREATMENT TRAIN C TAG NUMBERS ARE PRECEDED BY "46".
- 2 REFER TO SPECIFICATION SECTION 17950 FOR PE FLOW CALCULATIONS.

INTERLOCK LEGEND:

- 1 OPERATOR SHALL SELECT LEVEL INSTRUMENT TO BE USED FOR COMBINED WETWELL OPERATION.
- 2 IF SELECTED LEVEL SIGNAL IS INVALID, GENERATE ALARM AND SWITCH TO ALTERNATE LEVEL SIGNAL (IF VALID).
- 3 OPERATOR SHALL SELECT SEPARATE OR COMBINED WETWELL OPERATING MODE.



| | | | | | | | | | | | | | |
|---------------------|--|--|--|--|--|--|--|--|--|--|--|------------------------|--|
| DESIGNED DBE | | | | RECORD DRAWING | | CITY OF ROANOKE VIRGINIA | | INSTRUMENTATION AND CONTROL SECONDARY TREATMENT TRAIN C PROCESS AND INSTRUMENTATION DIAGRAM | | THE SCALE BAR SHOWN BELOW MEASURES ONE INCH LONG ON THE ORIGINAL DRAWING. | | DATE MARCH 2004 | |
| DRAWN JAD | | | | THIS DOCUMENT ORIGINALLY ISSUED FOR CONSTRUCTION AND SEALED BY ROBERT S. DIFIORE, SEAL NO. 22769 | | HAZEN AND SAWYER Environmental Engineers & Scientists 4011 WestChase Blvd, Raleigh, North Carolina 27607 | | REGIONAL WATER POLLUTION CONTROL PLANT PROCESS TRAIN IMPROVEMENTS | | H & S JOB NUMBER 30788B | | CONTRACT NUMBER B | |
| CHECKED | | | | THIS DRAWING HAS BEEN MODIFIED TO REFLECT FIELD CHANGES REPORTED BY THE CONTRACTOR OR ANOTHER PARTY, BUT NOT VERIFIED BY THE CERTIFYING ENGINEER. THIS DOCUMENT ORIGINALLY ISSUED AND SEALED BY DANIEL B. EDWARDS, SEAL NUMBER 024980. THIS MEDIA SHALL NOT BE CONSIDERED A CERTIFIED DOCUMENT. | | | | | | | | DRAWING NUMBER 1460 | |
| PROJ. ENGR. DAN | | | | THIS DOCUMENT ORIGINALLY ISSUED FOR CONSTRUCTION AND SEALED BY RONALD L. TAYLOR, SEAL NO. 024649 | | | | | | | | | |
| APPROVED | | | | | | | | | | | | | |
| NO. | | | | | | | | | | | | | |
| AS BUILT | | | | | | | | | | | | | |
| CONSTRUCTION | | | | | | | | | | | | | |
| REGULATORY APPROVAL | | | | | | | | | | | | | |
| ISSUED FOR | | | | | | | | | | | | | |
| DATE BY | | | | | | | | | | | | | |
| OCT 2007 RLT | | | | | | | | | | | | | |
| MAR 2004 RLT | | | | | | | | | | | | | |
| NOV 2003 RLT | | | | | | | | | | | | | |
| NO. | | | | | | | | | | | | | |