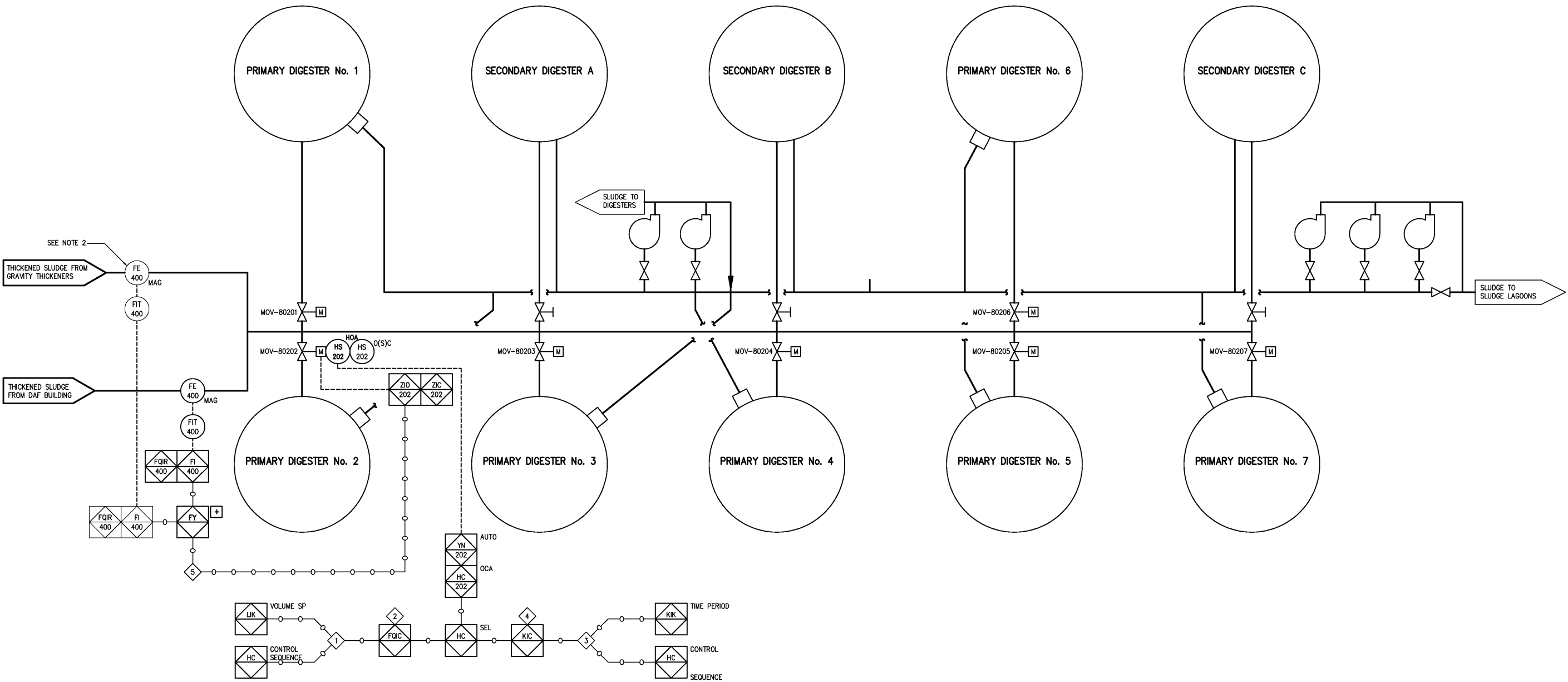


- NOTES:
- 1 ALL ANAEROBIC DIGESTER TAG NUMBERS ARE PRECEDED BY "80".
 - 2 EXISTING FLOW METER 72400 MEASURING THICKENED SLUDGE FLOW FROM THE GRAVITY THICKENERS WAS INSTALLED UNDER CONTRACT A.
- INTERLOCK LEGEND:
- 1 OPERATOR SHALL SELECT VALVE CONTROL SEQUENCE AND VOLUME SETPOINT.
 - 2 LEADING VALVE SHALL REMAIN OPEN UNTIL VOLUME SETPOINT IS REACHED. ONCE THE SETPOINT IS REACHED, OPEN LAGGING VALVE FIRST AND THEN CLOSE LEADING VALVE.
 - 3 OPERATOR SHALL SELECT VALVE CONTROL SEQUENCE AND TIME PERIOD FOR VALVES TO REMAIN OPEN.
 - 4 LEADING VALVE SHALL REMAIN OPEN FOR SPECIFIED TIME PERIOD. ONCE THE TIME PERIOD EXPIRES, OPEN LAGGING VALVE FIRST AND THEN CLOSE LEADING VALVE.
 - 5 PLC SHALL MONITOR AND TOTALIZE SLUDGE FLOW.



				DESIGNED _____ DBE	RECORD DRAWING	<div>HAZEN AND SAWYER</div> <div>Environmental Engineers & Scientists</div> <div>4011 WestChase Blvd, Raleigh, North Carolina 27607</div>	<div>CITY OF ROANOKE</div> <div>VIRGINIA</div>	<div>INSTRUMENTATION AND CONTROL</div> <div>DIGESTER SLUDGE FEED SYSTEM</div> <div>PROCESS AND INSTRUMENTATION DIAGRAM</div>	<div>THE SCALE BAR SHOWN BELOW MEASURES ONE INCH LONG ON THE ORIGINAL DRAWING.</div>	DATE MARCH 2004	
			DRAWN _____ JAD	H & S JOB NUMBER 30788B							
			CHECKED _____	CONTRACT NUMBER B						DRAWING NUMBER 1800	
			PROJ. ENGR. _____ DAN								
3	AS BUILT	OCT 2007	RLT	THIS DOCUMENT ORIGINALLY ISSUED FOR CONSTRUCTION AND SEALED BY ROBERT S. DIFIORE, SEAL NO. 22769							
2	CONSTRUCTION	MAR 2004	RLT								
1	REGULATORY APPROVAL	NOV 2003	RLT								
NO.	ISSUED FOR	DATE	BY								
				APPROVED _____	THIS DRAWING HAS BEEN MODIFIED TO REFLECT FIELD CHANGES REPORTED BY THE CONTRACTOR OR ANOTHER PARTY, BUT NOT VERIFIED BY THE CERTIFYING ENGINEER.	THIS DOCUMENT ORIGINALLY ISSUED AND SEALED BY DANIEL B. EDWARDS, SEAL NUMBER 024960. THIS MEDIA SHALL NOT BE CONSIDERED A CERTIFIED DOCUMENT.					