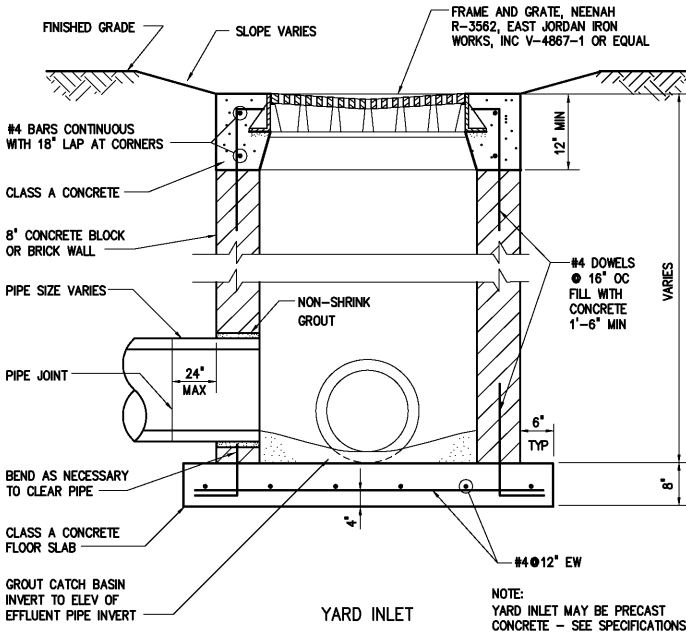


NOTES:

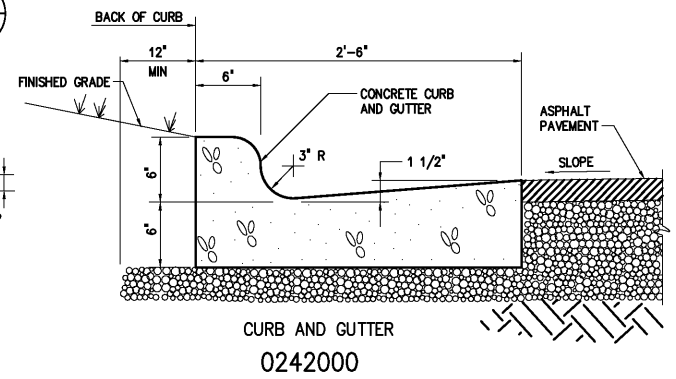
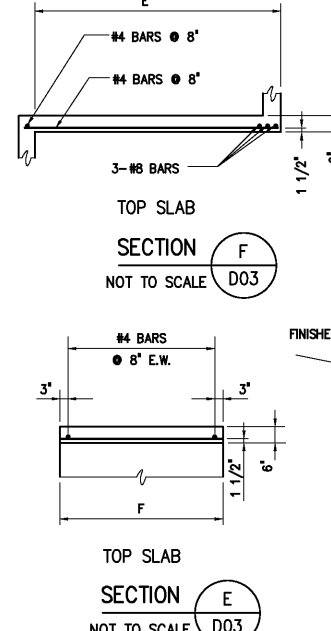
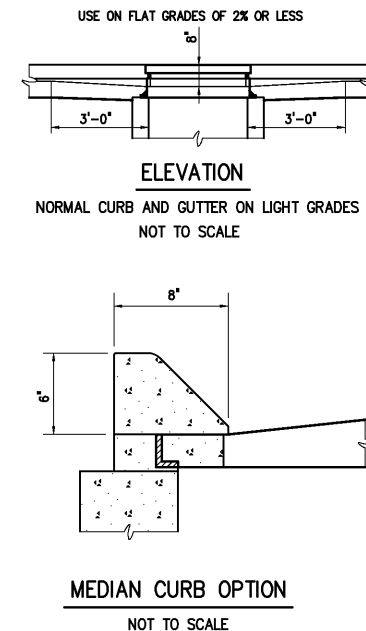
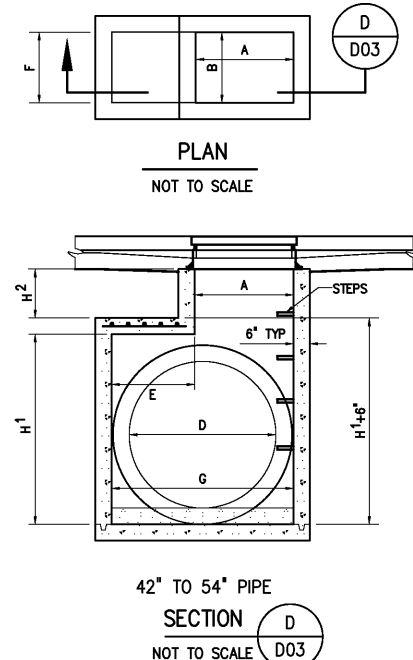
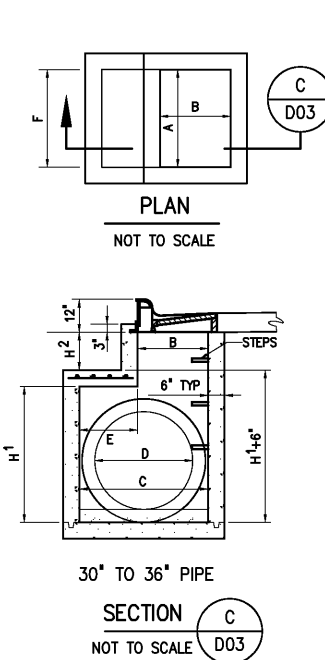
MINIMUM DIMENSIONS FOR CONCRETE CURB INLETS

DIMENSIONS OF BOX AND PIPE								COVER DIMENSIONS	
PIPE	SPAN	WIDTH	WIDTH	SPAN	HEIGHT	HEIGHT		E	F
D	A	B	C	G	MIN H <sup>1</sup>	H <sup>2</sup>			
12"	3'-0"	2'-2"	—	—	2'-6"	—	—	—	—
15"	3'-0"	2'-2"	—	—	2'-9"	—	—	—	—
18"	3'-0"	2'-2"	—	—	3'-1"	—	—	—	—
24"	3'-0"	2'-2"	—	—	3'-7"	—	—	—	—
30"	3'-0"	2'-2"	3'-4"	3'-4"	3'-6"	—	—	1'-8"	4'-0"
36"	3'-0"	2'-2"	3'-10"	3'-10"	4'-1"	—	—	2'-2"	4'-0"
42"	3'-0"	2'-2"	—	4'-5"	4'-10"	—	—	1'-11"	3'-2"
48"	3'-0"	2'-2"	—	5'-0"	5'-4"	—	—	2'-6"	3'-2"
54"	3'-0"	2'-2"	—	5'-7"	5'-11"	—	—	3'-1"	3'-2"

- CONCRETE CURB INLET NOTES:
- CLASS "A" CONCRETE TO BE USED THROUGHOUT.
  - ALL WALLS SHALL BE REINFORCED WITH #4 BARS @ 12" EACH WAY PLACED AT MID-DEPTH. BARS SHALL BE BENT AT CORNERS WITH STD. 90° HOOKS. BOTTOM SLAB SHALL BE REINFORCED WITH #5 AT 12" EACH WAY AT MID-DEPTH.
  - ALL CURB INLETS OVER 3'-6" IN DEPTH TO BE PROVIDED WITH STEPS 14" OC. STEPS SHALL BE IN ACCORDANCE WITH SPECIFICATIONS.
  - FOR 8'-0" IN HEIGHT OR LESS USE 6" WALLS AND BOTTOM SLAB. OVER 8'-0" AND UP TO 15'-0" USE 8" WALLS AND BOTTOM SLAB.

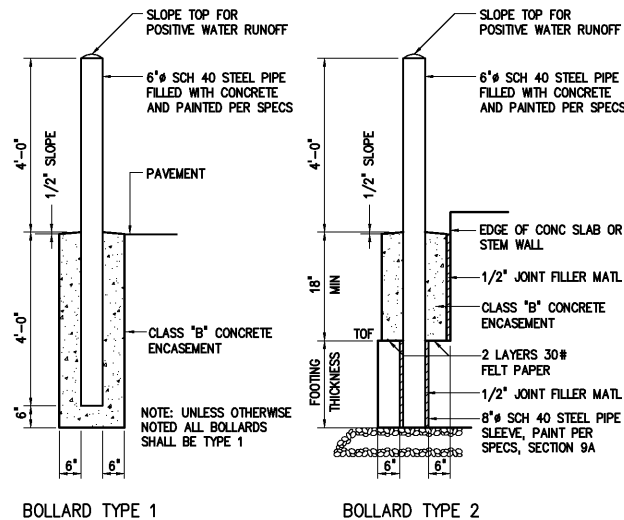


0243102

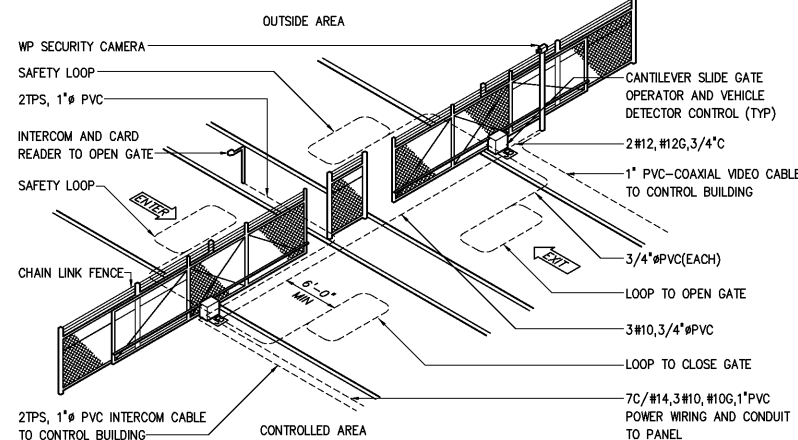


STANDARD CONCRETE CURB INLET  
12" THROUGH 54" PIPE

0243104

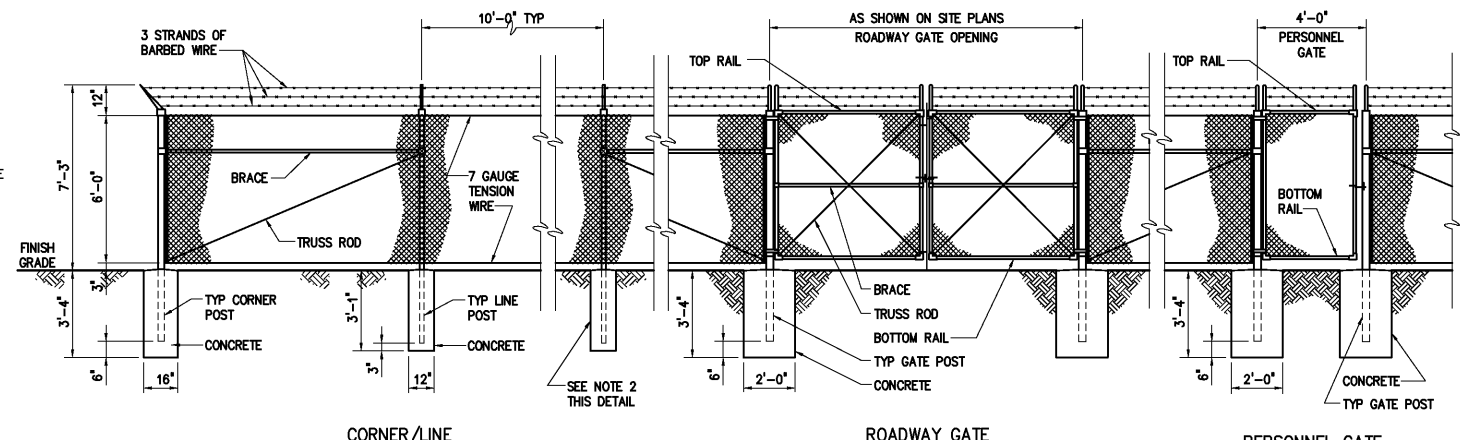


0245100



DETAIL 1

NOT TO SCALE



0244400

- NOTES: 1 PROVIDE LATCHING DEVICES TO HOLD GATES IN OPEN POSITION. SLIDING GATES SHALL BE AS SPECIFIED.
- 2 IF ROCK IS ENCOUNTERED WHEN SETTING POSTS, DRILL HOLES 4 INCHES LARGER IN DIAMETER THAN POSTS AND BACKFILL TO GRADE WITH CLASS "B" CONCRETE.

DESIGNED	H & S
DRAWN	H & S
CHECKED	
PROJ. ENGR.	H & S
APPROVED	

THIS DOCUMENT ORIGINALLY ISSUED FOR CONSTRUCTION AND SEALED BY ROBERT S. DIFIORE, SEAL NO. 22769

THIS DOCUMENT ORIGINALLY ISSUED FOR CONSTRUCTION AND SEALED BY RONALD L. TAYLOR, SEAL NO. 024649

RECORD DRAWING

THIS DRAWING HAS BEEN MODIFIED TO REFLECT FIELD CHANGES REPORTED BY THE CONTRACTOR OR ANOTHER PARTY, BUT NOT VERIFIED BY THE CERTIFYING ENGINEER. THIS DOCUMENT ORIGINALLY ISSUED AND SEALED BY DAVID A. NAILOR, 025465. THIS MEDIA SHALL NOT BE CONSIDERED A CERTIFIED DOCUMENT.

**HAZEN AND SAWYER**  
Environmental Engineers & Scientists  
4011 WestChase Blvd, Raleigh, North Carolina 27607

CITY OF ROANOKE  
VIRGINIA  
REGIONAL WATER POLLUTION CONTROL PLANT  
PROCESS TRAIN IMPROVEMENTS

MISCELLANEOUS STANDARD DETAILS

THE SCALE BAR SHOWN BELOW MEASURES ONE INCH LONG ON THE ORIGINAL DRAWING.	DATE	MARCH 2004
	H & S JOB NUMBER	30788B
	CONTRACT NUMBER	B
	DRAWING NUMBER	D5