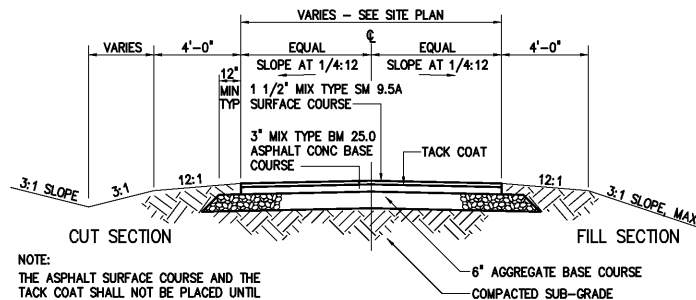
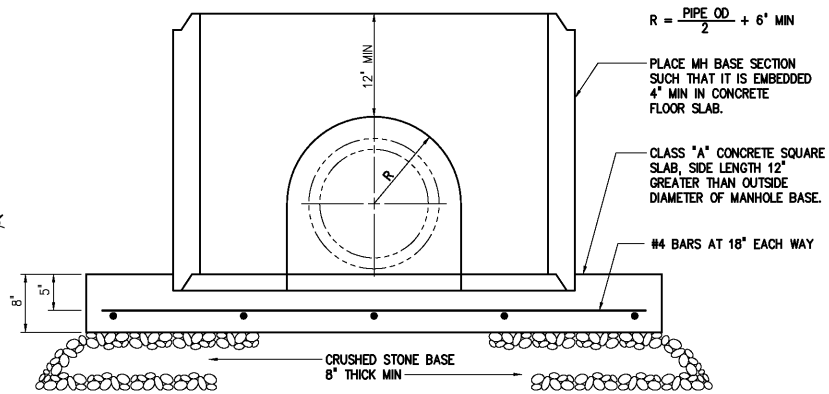


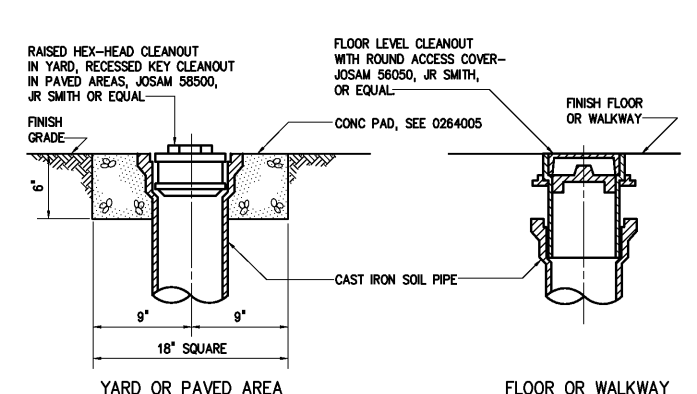
TYPICAL ROADWAY SECTION
0251004R



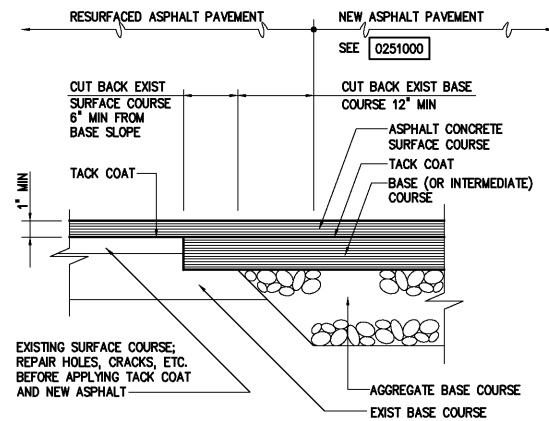
TYPICAL ROADWAY SECTION
0251000R



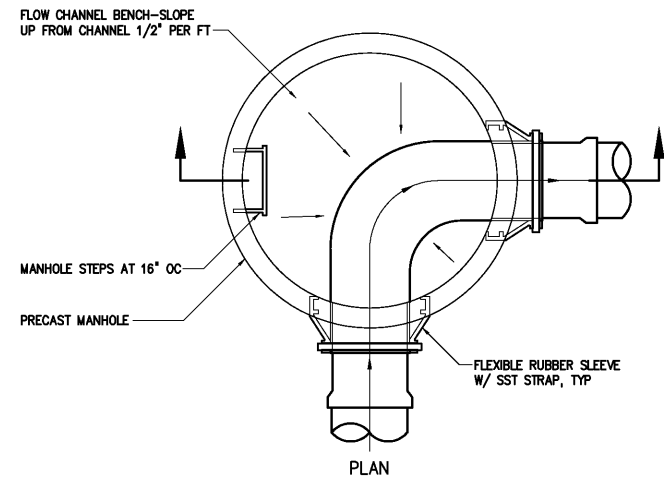
DOGHOUSE PRECAST MANHOLES
0260102



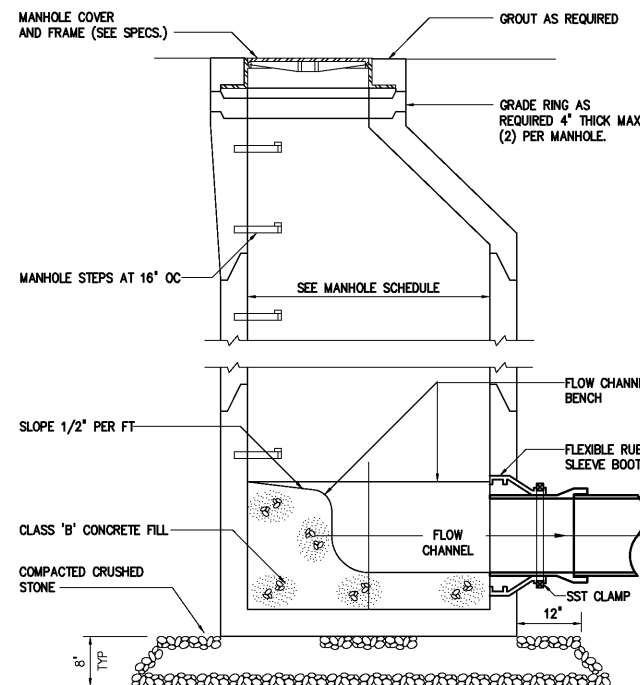
CLEANOUTS
1542300



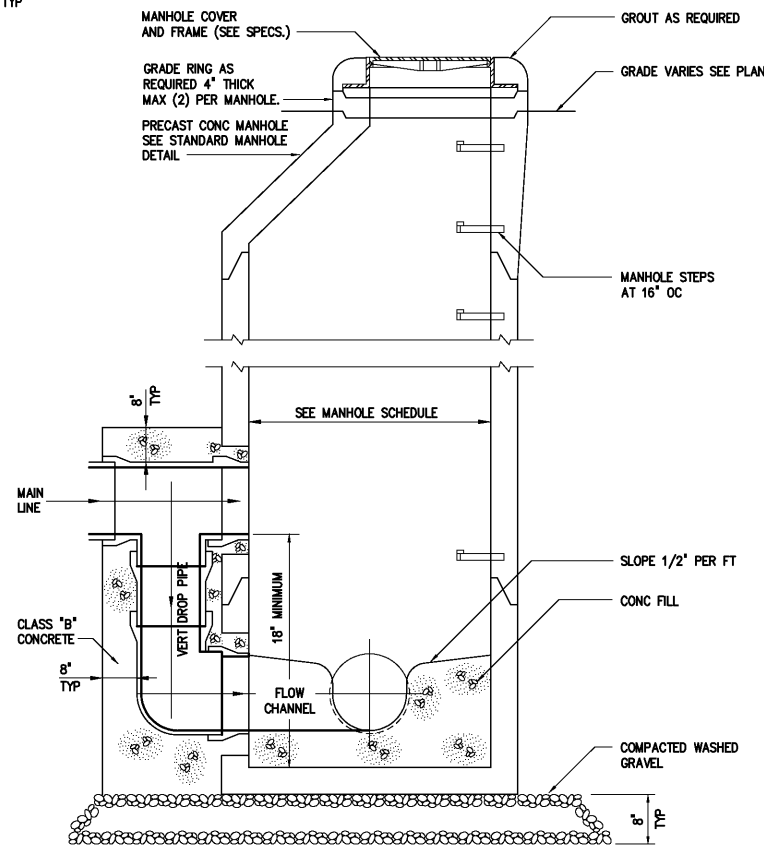
TYPICAL PAVEMENT JUNCTION WITH
RESURFACING OF EXISTING PAVEMENT
0251300



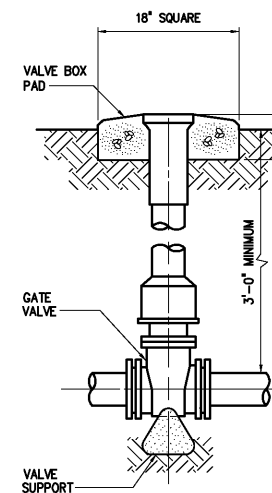
PLAN
0260100



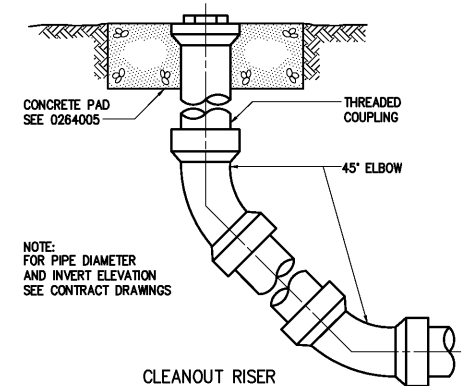
SECTION
0260101



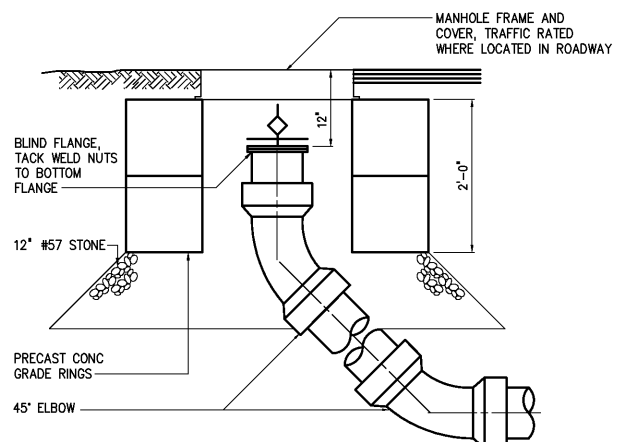
DROP MANHOLE
0260109



VALVE BOX
0264000



CLEANOUT RISER
1542400



CLEANOUT RISER
(PRESSURIZED LINE)
1542401R

				DESIGNED	H & S
				DRAWN	H & S
				CHECKED	
3	AS BUILT	OCT 2007	RLT	PROJ. ENGR.	H & S
2	CONSTRUCTION	MAR 2004	RLT		
1	REGULATORY APPROVAL	NOV 2003	RLT		
NO.	ISSUED FOR	DATE	BY	APPROVED	

THIS DOCUMENT ORIGINALLY ISSUED
FOR CONSTRUCTION AND SEALED BY
ROBERT S. DIFIORE, SEAL NO. 22769

RECORD DRAWING

THIS DRAWING HAS BEEN MODIFIED TO REFLECT FIELD
CHANGES REPORTED BY THE CONTRACTOR OR ANOTHER
PARTY, BUT NOT VERIFIED BY THE CERTIFYING ENGINEER.
THIS DOCUMENT ORIGINALLY ISSUED AND SEALED BY
DAVID A. NAILOR, 025465. THIS MEDIA SHALL NOT BE
CONSIDERED A CERTIFIED DOCUMENT.

THIS DOCUMENT ORIGINALLY ISSUED
FOR CONSTRUCTION AND SEALED BY
RONALD L. TAYLOR, SEAL NO. 024649

Hazen and Sawyer
Environmental Engineers & Scientists
4011 WestChase Blvd, Raleigh, North Carolina 27607

CITY OF ROANOKE
VIRGINIA

REGIONAL WATER POLLUTION CONTROL PLANT
PROCESS TRAIN IMPROVEMENTS

MISCELLANEOUS STANDARD DETAILS

THE SCALE BAR SHOWN BELOW MEASURES ONE INCH LONG ON THE ORIGINAL DRAWING.	DATE MARCH 2004
H & S JOB NUMBER 30788B	CONTRACT NUMBER B
DRAWING NUMBER D6	