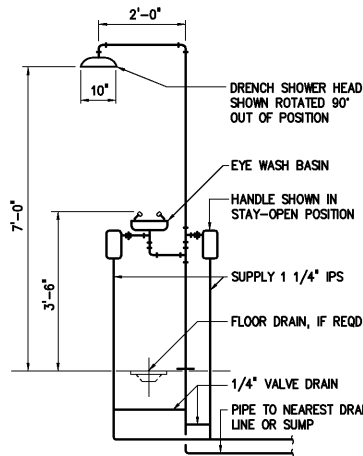


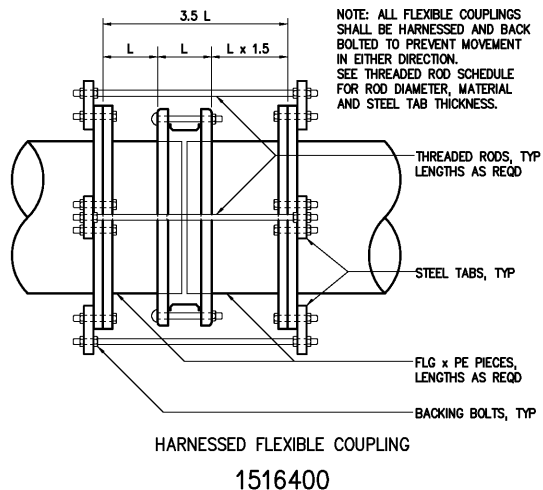
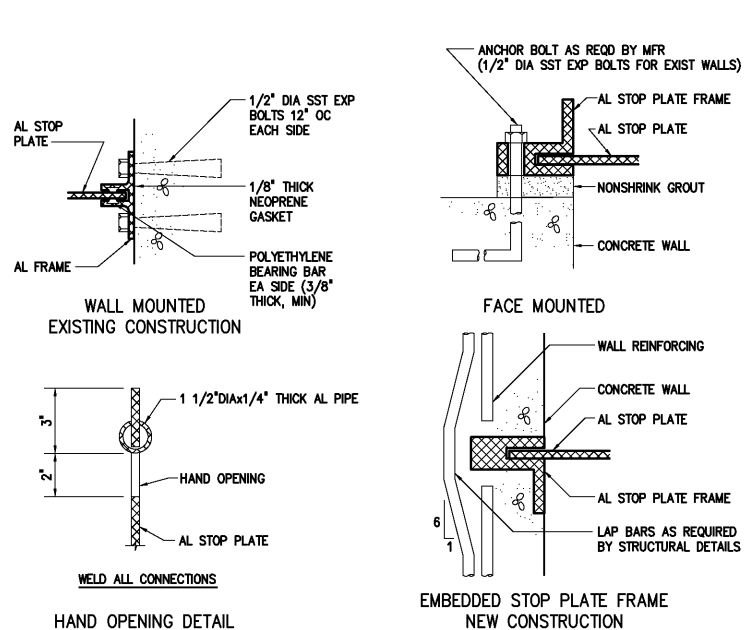
1513400R



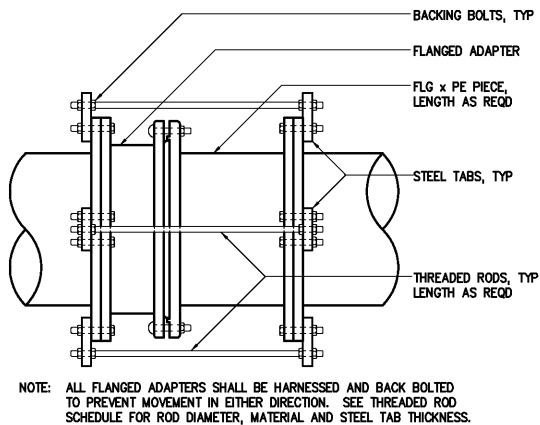
EMERGENCY SHOWER AND EYEWASH
1545100

THREADED ROD SCHEDULE												
DESIGN PRESSURE (DIMENSIONS IN INCHES)												
PIPE SIZE	50 PSI	100 PSI	150 PSI	200 PSI	250 PSI	300 PSI	350 PSI					
BOLTS NO-DIA	TAB THK	BOLTS NO-DIA	TAB THK	BOLTS NO-DIA	TAB THK	BOLTS NO-DIA	TAB THK	BOLTS NO-DIA	TAB THK	BOLTS NO-DIA	TAB THK	BOLTS NO-DIA
4,6	2-3/4	1	2-3/4	1	2-3/4	1	2-3/4	1	2-3/4	1	2-3/4	1
8	2-3/4	1 1/4	2-3/4	1 1/4	2-3/4	1 1/4	2-3/4	1 1/4	2-3/4	1 1/4	2-3/4	1 1/4
10	2-3/4	1 1/4	2-3/4	1 1/4	2-3/4	1 1/4	2-3/4	1 1/4	2-3/4	1 1/4	2-3/4	1 1/4
12	2-3/4	1 1/4	2-3/4	1 1/4	2-3/4	1 1/4	2-3/4	1 1/4	2-3/4	1 1/4	2-3/4	1 1/4
14	2-3/4	1 1/2	2-3/4	1 1/2	2-3/4	1 1/2	2-3/4	1 1/2	2-3/4	1 1/2	2-3/4	1 1/2
16	2-3/4	1 1/2	2-3/4	1 1/2	2-3/4	1 1/2	2-3/4	1 1/2	2-3/4	1 1/2	2-3/4	1 1/2
18	2-3/4	1 3/4	2-3/4	1 3/4	2-3/4	1 3/4	2-3/4	1 3/4	2-3/4	1 3/4	2-3/4	1 3/4
20	2-3/4	1 3/4	2-3/4	1 3/4	2-3/4	1 3/4	2-3/4	1 3/4	2-3/4	1 3/4	2-3/4	1 3/4
24	2-3/4	2	2-3/4	2	2-3/4	2	2-3/4	2	2-3/4	2	2-3/4	2
30	4-1	2 1/4	4-1	2 1/4	4-1	2 1/4	4-1	2 1/4	4-1	2 1/4	4-1	2 1/4
36	4-1	2 1/2	4-1	2 1/2	4-1	2 1/2	4-1	2 1/2	4-1	2 1/2	4-1	2 1/2
42	4-1 1/4	2 3/4	4-1 1/4	2 3/4	4-1 1/4	2 3/4	4-1 1/4	2 3/4	4-1 1/4	2 3/4	4-1 1/4	2 3/4
48	4-1 1/4	2 3/4	4-1 1/4	2 3/4	4-1 1/4	2 3/4	4-1 1/4	2 3/4	4-1 1/4	2 3/4	4-1 1/4	2 3/4
54	4-1 1/4	3	4-1 1/4	3	4-1 1/4	3	4-1 1/4	3	4-1 1/4	3	4-1 1/4	3

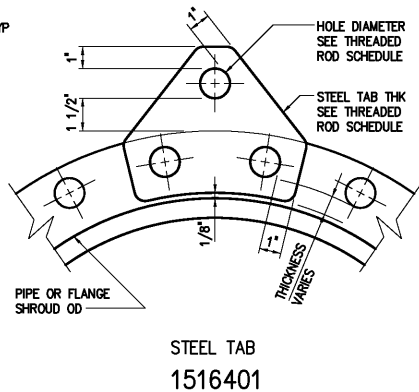
1. THREADED RODS FOR ALL PIPE DIAMETERS IN THE SHADED AREA SHALL BE ASTM A193 (GRADE B7).
2. ALL OTHER THREADED RODS SHALL BE ASTM A36. ALL TABS SHALL BE ASTM A572 GR50.
3. ASTM A193 (GRADE B7) RODS SHALL BE LABELED AND BUNDLED SEPARATELY.
4. THIS SCHEDULE SHALL APPLY FOR HARNESSSED FLANGED ADAPTERS, HARNESSSED FLEXIBLE COUPLINGS AND ALL MECHANICAL JOINT COUPLINGS, SLEEVES ETC. THAT ARE REQUIRED TO BE HARNESSSED.
5. RODS THREADED AT ENDS (INCLUDING NUTS) SHALL BE EQUALLY SPACED AROUND PIPE BETWEEN ALL MECHANICAL JOINT FITTINGS (TEE, VALVES, BEND, PLUG, ETC.) OR AS OTHERWISE SHOWN ON THE CONTRACT DRAWINGS. THREADED RODS SHALL BE AS SHOWN IN THE THREADED ROD SCHEDULE. SEE NOTE 6.
6. RODS, NUTS, ETC., IN CONTACT WITH SOIL SHALL BE PAINTED WITH TWO COATS COAL TAR (MIN 26 DRY MIL THICKNESS) TNEDEC 46-465 HI-BUILD OR EQUAL.



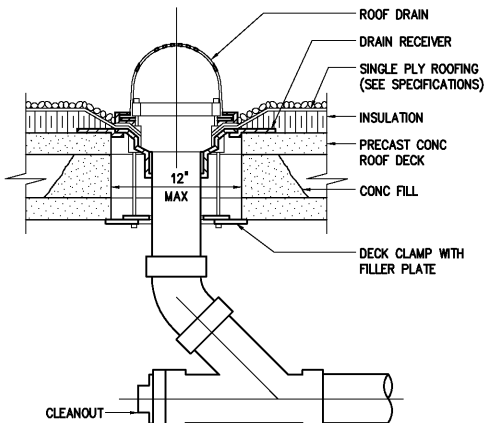
1516400



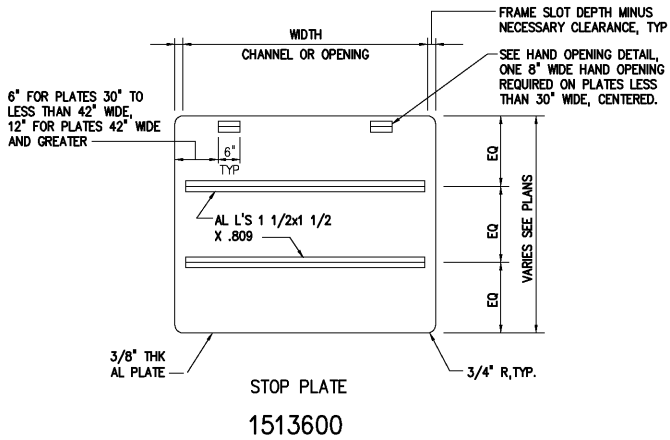
1516402



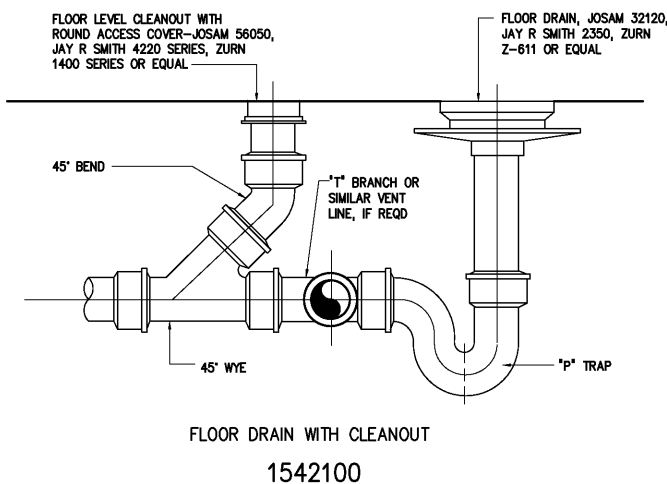
STEEL TAB
1516401



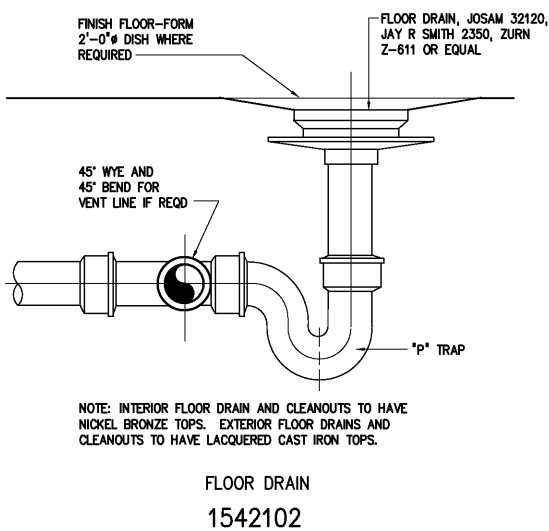
ROOF DRAIN
1542201



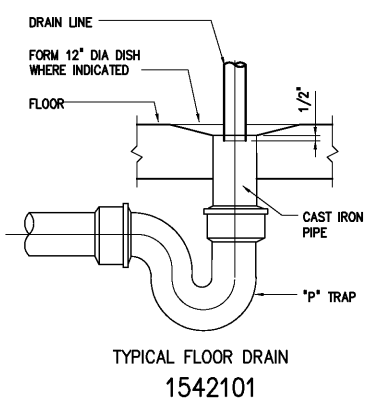
STOP PLATE
1513600



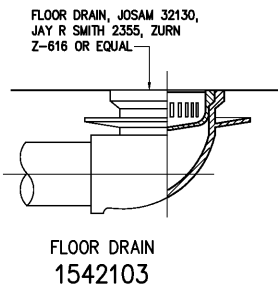
FLOOR DRAIN WITH CLEANOUT
1542100



FLOOR DRAIN
1542102



TYPICAL FLOOR DRAIN
1542101



FLOOR DRAIN
1542103

3	AS BUILT	OCT 2007	RLT	DESIGNED	H & S
2	CONSTRUCTION	MAR 2004	RLT	DRAWN	H & S
1	REGULATORY APPROVAL	NOV 2003	RLT	CHECKED	
NO.	ISSUED FOR	DATE	BY	PROJ. ENGR.	H & S
				APPROVED	

THIS DOCUMENT ORIGINALLY ISSUED FOR CONSTRUCTION AND SEALED BY ROBERT S. DIFIORE, SEAL NO. 22769

THIS DOCUMENT ORIGINALLY ISSUED FOR CONSTRUCTION AND SEALED BY RONALD L. TAYLOR, SEAL NO. 024649

RECORD DRAWING

THIS DRAWING HAS BEEN MODIFIED TO REFLECT FIELD CHANGES REPORTED BY THE CONTRACTOR OR ANOTHER PARTY, BUT NOT VERIFIED BY THE CERTIFYING ENGINEER. THIS DOCUMENT ORIGINALLY ISSUED AND SEALED BY DAVID A. NAILOR, 025465. THIS MEDIA SHALL NOT BE CONSIDERED A CERTIFIED DOCUMENT.

Hazen and Sawyer
Environmental Engineers & Scientists
4011 WestChase Blvd, Raleigh, North Carolina 27607

CITY OF ROANOKE
VIRGINIA

REGIONAL WATER POLLUTION CONTROL PLANT
PROCESS TRAIN IMPROVEMENTS

MISCELLANEOUS STANDARD DETAILS

THE SCALE BAR SHOWN BELOW MEASURES ONE INCH LONG ON THE ORIGINAL DRAWING.	DATE	MARCH 2004
	H & S JOB NUMBER	30788B
	CONTRACT NUMBER	B
	DRAWING NUMBER	D14