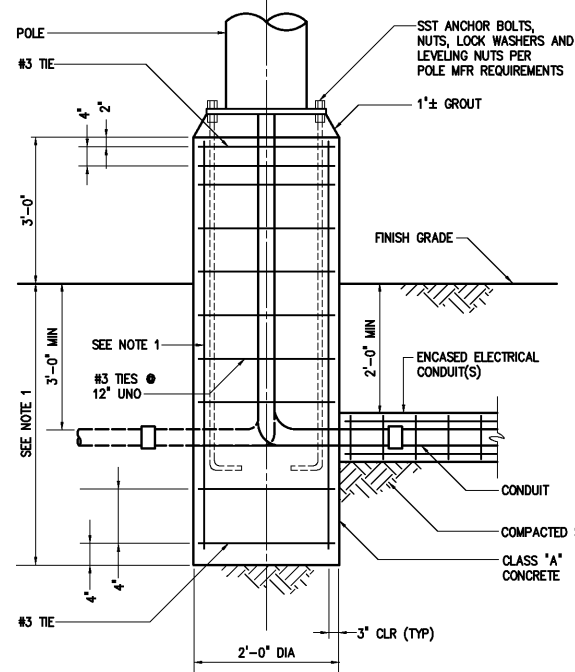
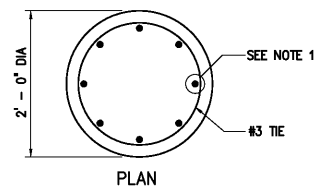


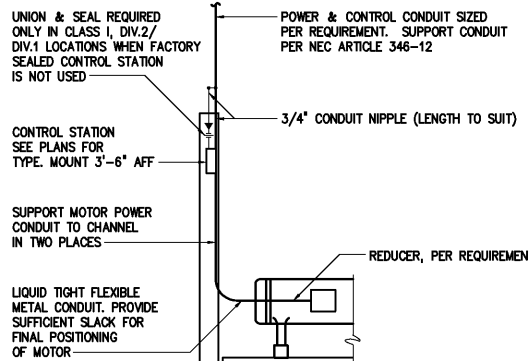
CONCRETE ENCASED GROUND
1617004



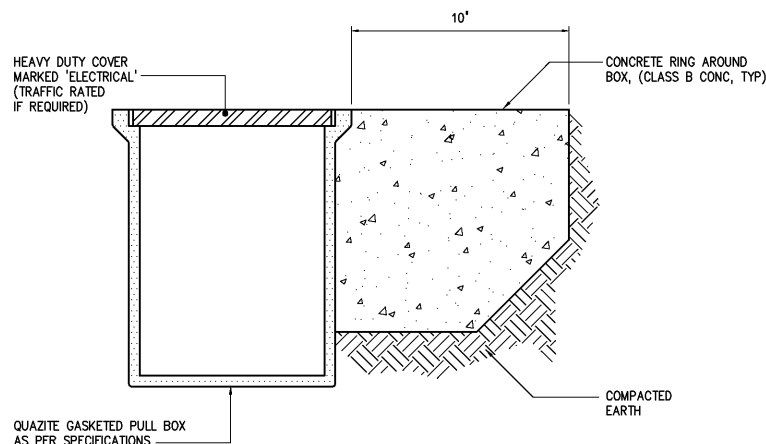
NOTES:
1 IF NOT SPECIFIED OR SHOWN, DEPTH AND REINFORCEMENT SHALL BE DETERMINED BY POLE MANUFACTURER. LOADING SHALL BE DEAD LOAD PLUS 100 MPH WIND, STANDARD EXPOSURE PER STANDARD BUILDING CODE.

AREA LIGHTING FIXTURE MOUNTING
1615002

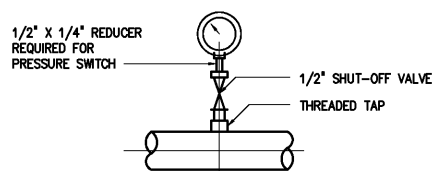
WELD 6"x3"x1/4" BASE PLATE TO CHANNEL FOR CONCRETE FLOORS: BOLT BASE PLATE TO FLOOR AT 3 PLACES. SIZE BOLTS PER REQUIREMENT. FOR STEEL PLATE OR GRATING FLOORS: WELD BASE PLATE TO FLOOR.



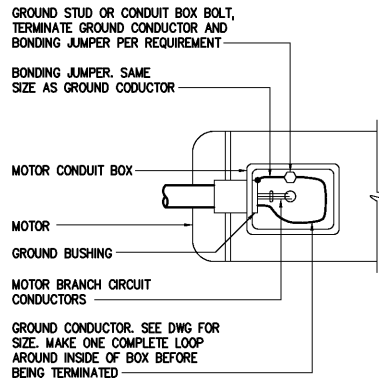
MOTOR CONDUIT INSTALLATION DETAIL
HAZARDOUS AND NONHAZARDOUS LOCATIONS
POWER AND CONTROL WIRE IN SAME CONDUIT
1618001



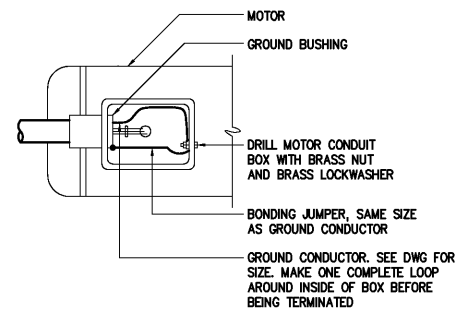
PULL BOX AND HAND HOLE (HH) INSTALLATION DETAIL
1611803



PRESSURE GAUGE OR SWITCH
INSTALLATION WITH THREADED TAP
(SHOWN WITHOUT DIAPHRAGM SEAL)
USED FOR PIPES 2" AND LARGER
1691004

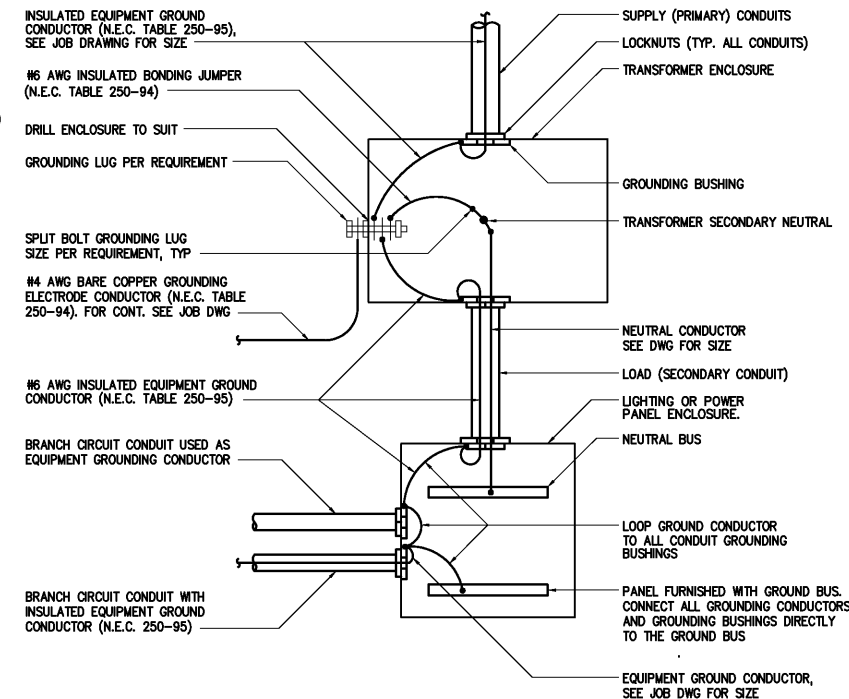


NOTE:
OMIT GROUND BUSHING AND BONDING JUMPER FOR MOTOR CONDUIT BOX WITH THREADED HUB
PREFERRED INSTALLATION



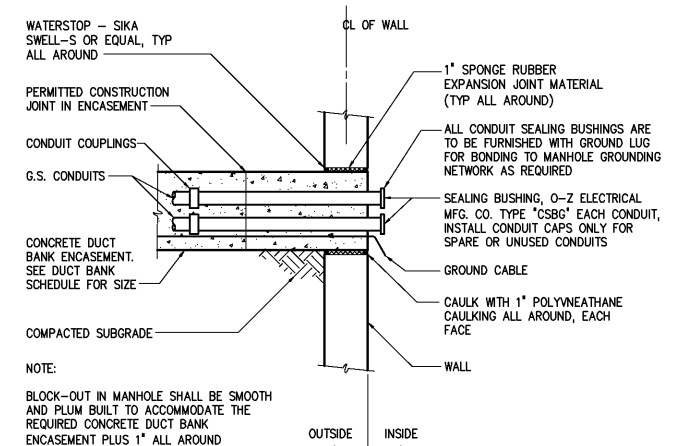
NOTE:
OMIT GROUND BUSHING AND BONDING JUMPER FOR MOTOR CONDUIT BOX WITH THREADED HUB
ALTERNATE INSTALLATION

LOW VOLTAGE MOTOR GROUNDING CONNECTIONS
HAZARDOUS AND NONHAZARDOUS
1618002

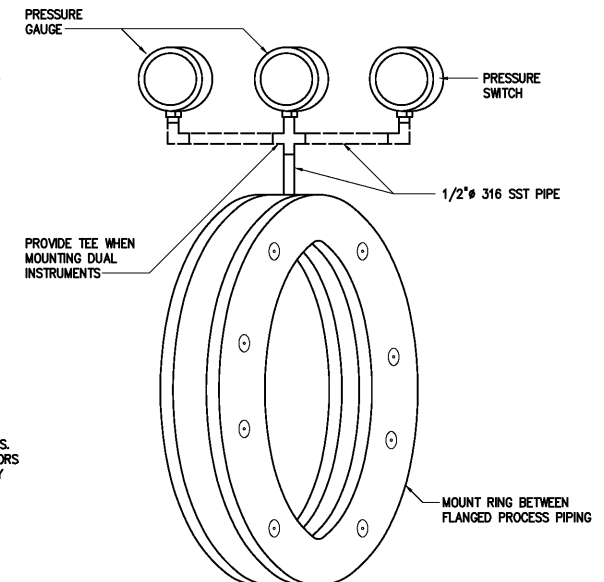


NOTES:
1 GROUNDING CONDUCTORS SHOWN ARE FOR TRANSFORMERS UP TO 45KVA. SEE ELECT. JOB DRAWINGS FOR LARGER TRANSFORMERS OR WHEN VOLTAGE DROP REQUIRES LARGER CONDUCTORS.

LOW VOLTAGE TRANSFORMER GROUNDING INSTALLATION DETAIL
1618003



DUCT BANK TERMINATION AT MANHOLE
1611804



IN-LINE ISOLATING RING DETAIL
FOR HEAVY SOLIDS/SLURRY SERVICE
1691006

				DESIGNED	H & S
				DRAWN	H & S
				CHECKED	
3	AS BUILT	OCT 2007	RLT	PROJ. ENGR.	H & S
2	CONSTRUCTION	MAR 2004	RLT		
1	REGULATORY APPROVAL	NOV 2003	RLT		
NO.	ISSUED FOR	DATE	BY	APPROVED	

THIS DOCUMENT ORIGINALLY ISSUED FOR CONSTRUCTION AND SEALED BY ROBERT S. DIFIORE, SEAL NO. 22769

RECORD DRAWING

THIS DRAWING HAS BEEN MODIFIED TO REFLECT FIELD CHANGES REPORTED BY THE CONTRACTOR OR ANOTHER PARTY, BUT NOT VERIFIED BY THE CERTIFYING ENGINEER. THIS DOCUMENT ORIGINALLY ISSUED AND SEALED BY GERALD J. RATASKY, 026535. THIS MEDIA SHALL NOT BE CONSIDERED A CERTIFIED DOCUMENT.

THIS DOCUMENT ORIGINALLY ISSUED FOR CONSTRUCTION AND SEALED BY RONALD L. TAYLOR, SEAL NO. 024649

HAZEN AND SAWYER
Environmental Engineers & Scientists
4011 WestChase Blvd, Raleigh, North Carolina 27607

CITY OF ROANOKE
VIRGINIA
REGIONAL WATER POLLUTION CONTROL PLANT
PROCESS TRAIN IMPROVEMENTS

MISCELLANEOUS STANDARD DETAILS

THE SCALE BAR SHOWN BELOW MEASURES ONE INCH LONG ON THE ORIGINAL DRAWING.	DATE	MARCH 2004
H & S JOB NUMBER	CONTRACT NUMBER	DRAWING NUMBER
	B	D16