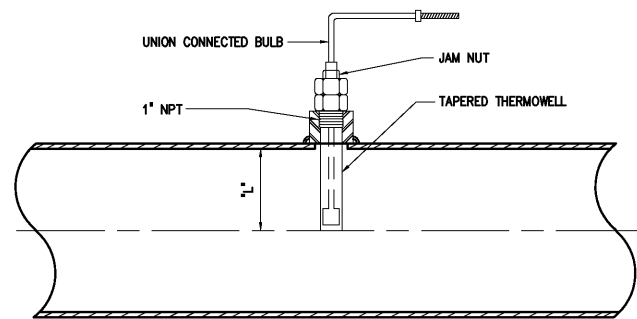
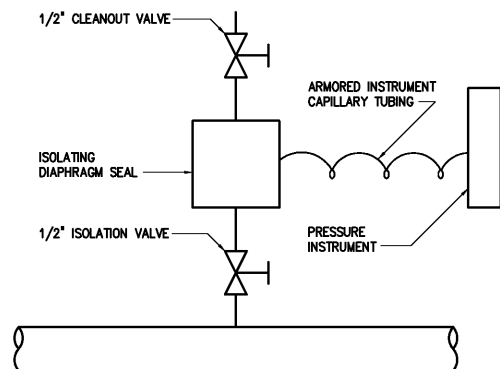


pH PROBE
ENCLOSED CHANNEL INSERTION
MOUNTING DETAIL
1691009

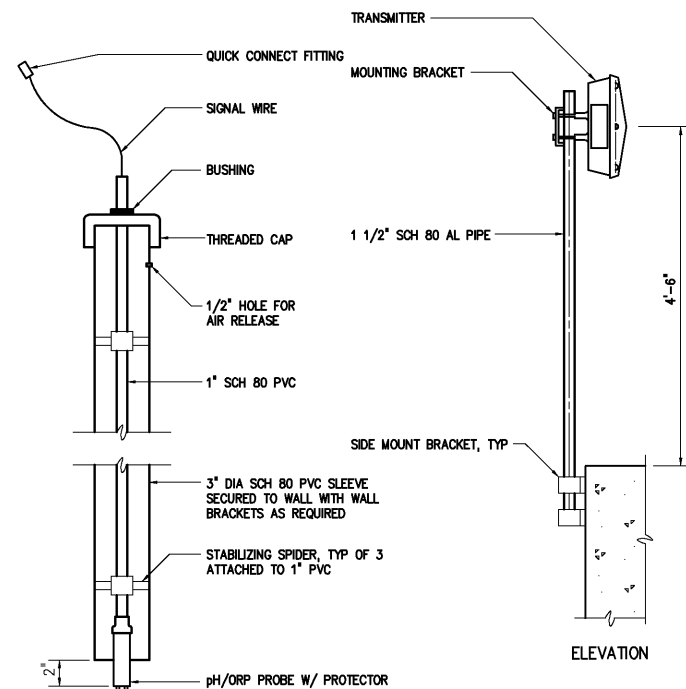
- NOTES:
- TEMPERATURE INSTRUMENT NOT SHOWN
 - INSERTION LENGTH "L" SHALL BE AS FOLLOWS:
FOR PIPES UP TO 12 INCHES "L" SHALL EQUAL 1/3 THE DIAMETER OF THE PIPE. FOR LARGER PIPES AND VESSELS, "L" SHALL BE SIZED SO THAT IT EXTENDS 4 INCHES INTO THE PROCESS.



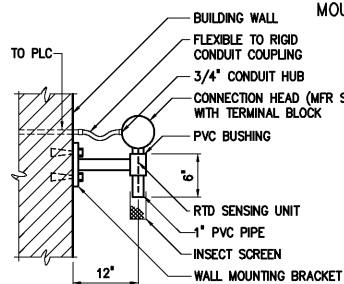
TYPICAL TEMPERATURE ELEMENT
1696100



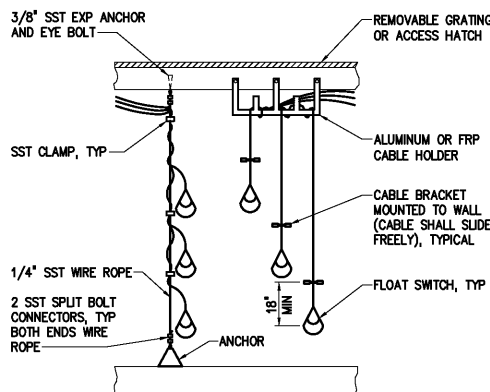
TAPPED DIAPHRAM SEAL DETAIL
1696105



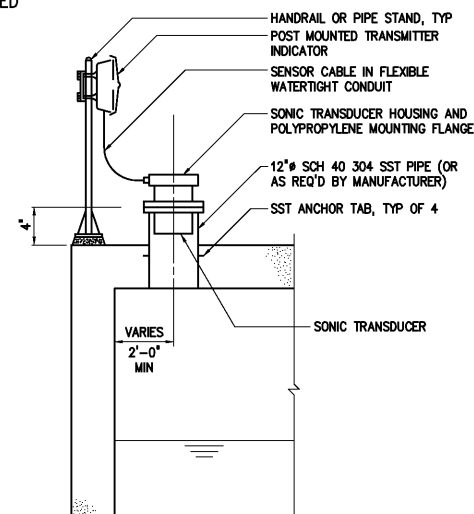
REMOVABLE pH/ORP PROBE
IN STATIONARY SLEEVE
1696104



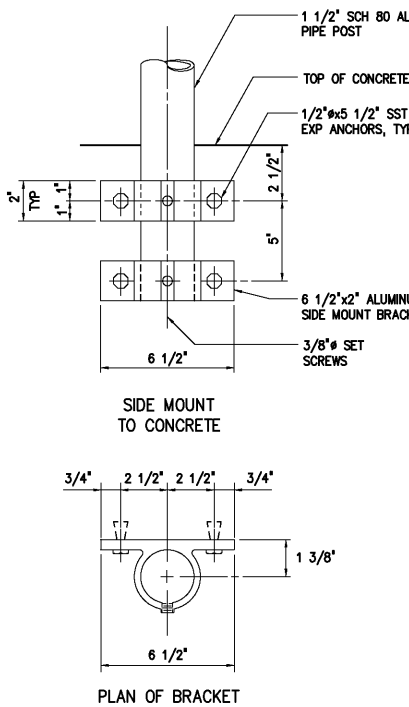
NOTE: TIP OF PROBE SHOULD NOT PROTRUDE FROM THE PVC PIPE.
TYPICAL AMBIENT TEMPERATURE
SENSING ELEMENT MOUNTED
ON EXTERIOR WALL
1696103



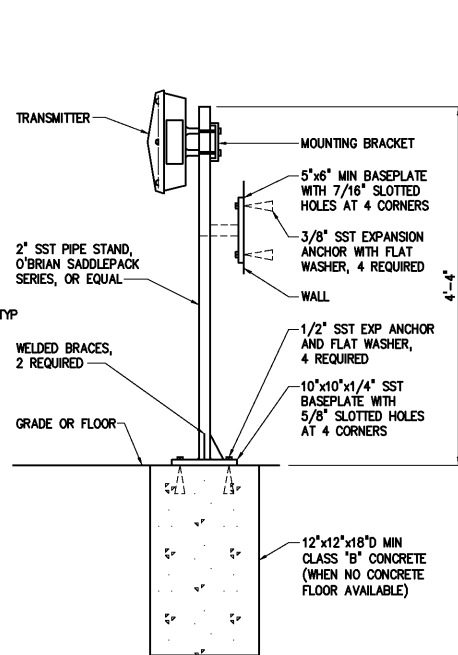
TYPICAL LEVEL SWITCH
MOUNTING DETAILS
1696200



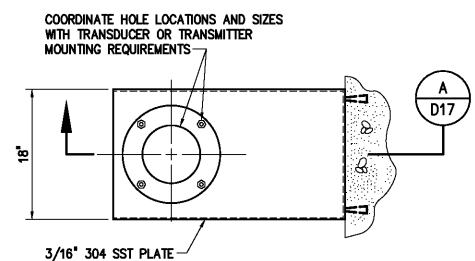
SONIC LEVEL
SENSOR DETAIL
1696202



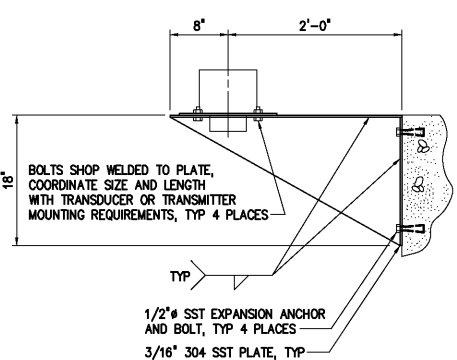
TYPICAL PIPE STAND TRANSMITTER
MOUNTED ON SIDE WALL
1696213



TYPICAL PIPE STAND TRANSMITTER
FLOOR OR WALL
1696214

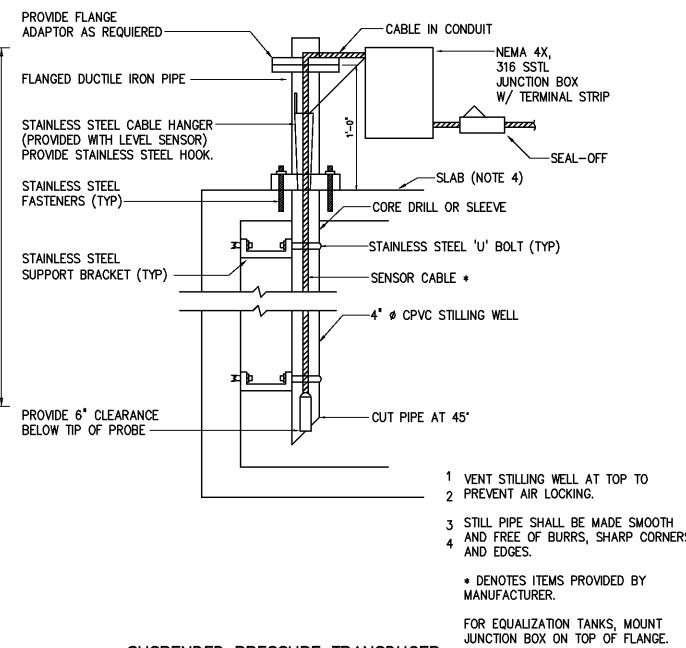


ULTRASONIC LEVEL TRANSDUCER OR TRANSMITTER
WALL MOUNTING DETAIL
1696210

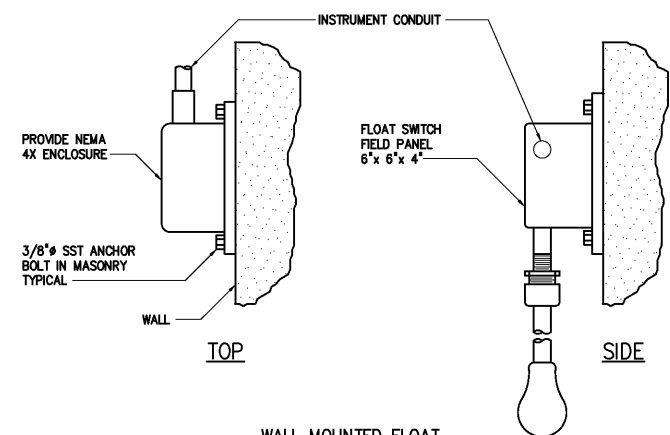


ULTRASONIC LEVEL TRANSDUCER OR TRANSMITTER
WALL MOUNTING DETAIL

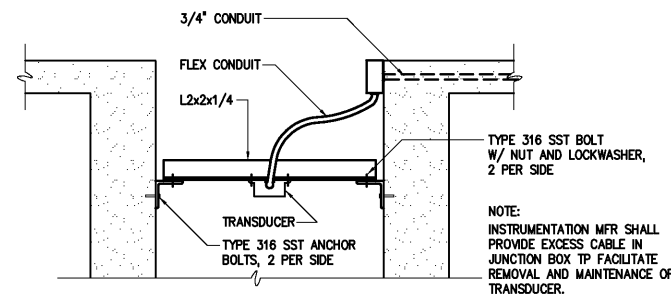
SECTION A
NTS D17



SUSPENDED PRESSURE TRANSDUCER
LEVEL INSTRUMENT WETWELL INSTALLATION
1696221



WALL MOUNTED FLOAT
SWITCH DETAIL
1696203



TRANSDUCER MOUNTING DETAIL
1696215

					DESIGNED	H & S
					DRAWN	H & S
					CHECKED	
3	AS BUILT	OCT 2007	RLT		PROJ. ENGR.	H & S
2	CONSTRUCTION	MAR 2004	RLT			
1	REGULATORY APPROVAL	NOV 2003	RLT			
NO.	ISSUED FOR	DATE	BY		APPROVED	

THIS DOCUMENT ORIGINALLY ISSUED FOR CONSTRUCTION AND SEALED BY ROBERT S. DIFIORE, SEAL NO. 22769

RECORD DRAWING

THIS DRAWING HAS BEEN MODIFIED TO REFLECT FIELD CHANGES REPORTED BY THE CONTRACTOR OR ANOTHER PARTY, BUT NOT VERIFIED BY THE CERTIFYING ENGINEER. THIS DOCUMENT ORIGINALLY ISSUED AND SEALED BY DANIEL B. EDWARDS, SEAL NUMBER 024980. THIS MEDIA SHALL NOT BE CONSIDERED A CERTIFIED DOCUMENT.

THIS DOCUMENT ORIGINALLY ISSUED FOR CONSTRUCTION AND SEALED BY RONALD L. TAYLOR, SEAL NO. 024649

Hazen and Sawyer
Environmental Engineers & Scientists
4011 WestChase Blvd, Raleigh, North Carolina 27607

CITY OF ROANOKE
VIRGINIA

REGIONAL WATER POLLUTION CONTROL PLANT
PROCESS TRAIN IMPROVEMENTS

MISCELLANEOUS STANDARD DETAILS

THE SCALE BAR SHOWN BELOW MEASURES ONE INCH LONG ON THE ORIGINAL DRAWING.	DATE	MARCH 2004
	H & S JOB NUMBER	30788B
	CONTRACT NUMBER	B
	DRAWING NUMBER	D17