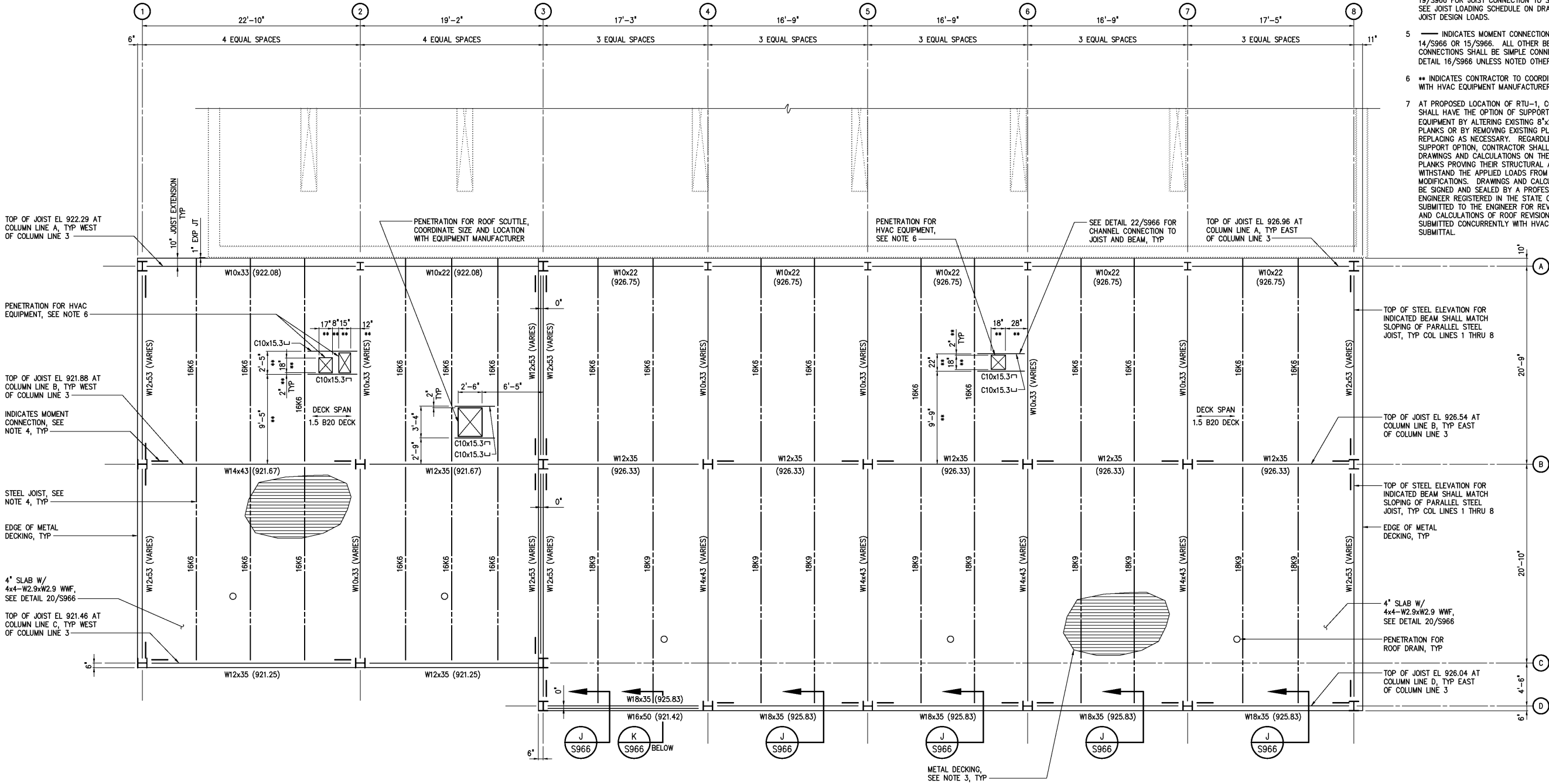


NOTES:

- 1 SEE DRAWING S966 FOR COLUMN SCHEDULE AND GENERAL STEEL NOTES.
- 2 CAMBER ALL BEAMS WHICH ARE PARALLEL TO STEEL JOISTS TO MATCH THE CAMBER OF STEEL JOISTS.
- 3 ROOF DECK PUDDLE WELD PATTERN SHALL BE 3/6/5 WITH 4 WELDED CONNECTIONS EQUALLY SPACED AT SIDE LAPS PER SPAN.
- 4 STEEL JOISTS SHALL BE FABRICATED IN ACCORDANCE WITH SPECIFICATION SECTION 05210. SEE DETAIL 19/S966 FOR JOIST CONNECTION TO STEEL BEAM. SEE JOIST LOADING SCHEDULE ON DRAWING S962 FOR JOIST DESIGN LOADS.
- 5 — INDICATES MOMENT CONNECTION PER DETAIL 14/S966 OR 15/S966. ALL OTHER BEAM CONNECTIONS SHALL BE SIMPLE CONNECTIONS PER DETAIL 16/S966 UNLESS NOTED OTHERWISE.
- 6 ** INDICATES CONTRACTOR TO COORDINATE DIMENSION WITH HVAC EQUIPMENT MANUFACTURER.
- 7 AT PROPOSED LOCATION OF RTU-1, CONTRACTOR SHALL HAVE THE OPTION OF SUPPORTING NEW HVAC EQUIPMENT BY ALTERING EXISTING 8"x24" FLEXICORE PLANKS OR BY REMOVING EXISTING PLANKS AND REPLACING AS NECESSARY. REGARDLESS OF SUPPORT OPTION, CONTRACTOR SHALL SUBMIT DESIGN DRAWINGS AND CALCULATIONS ON THE FLEXICORE PLANKS PROVING THEIR STRUCTURAL ADEQUACY TO WITHSTAND THE APPLIED LOADS FROM ANY PROPOSED MODIFICATIONS. DRAWINGS AND CALCULATIONS SHALL BE SIGNED AND SEALED BY A PROFESSIONAL ENGINEER REGISTERED IN THE STATE OF VIRGINIA AND SUBMITTED TO THE ENGINEER FOR REVIEW. DRAWINGS AND CALCULATIONS OF ROOF REVISIONS SHALL BE SUBMITTED CONCURRENTLY WITH HVAC EQUIPMENT SUBMITTAL.



ROOF PLAN

3/16"=1'-0"
TOS EL AS INDICATED

JOIST LOADING SCHEDULE

JOIST	LOAD (PLF)	UPLIFT (PLF) *
12K1	525	-
18K6	535	70
18K9	520	70

* MAXIMUM WIND UPLIFT LOAD DURING CONSTRUCTION

DESIGNED	BGS
DRAWN	BGS
CHECKED	
PROJ. ENGR.	DAN
APPROVED	
NO.	
3	RECORD DRAWING
2	CONSTRUCTION
1	REGULATORY APPROVAL
NO.	ISSUED FOR
DATE	BY
JAN 2006	RLT
JAN 2004	RLT
NOV 2003	RLT

THIS DOCUMENT ORIGINALLY ISSUED FOR CONSTRUCTION AND SEALED BY ROBERT S. DIFIORE, SEAL NO. 22769

RECORD DRAWING

THIS DRAWING HAS BEEN MODIFIED TO REFLECT FIELD CHANGES REPORTED BY THE CONTRACTOR OR ANOTHER PARTY, BUT NOT VERIFIED BY THE CERTIFYING ENGINEER. THIS DOCUMENT ORIGINALLY ISSUED AND SEALED BY CHRISTOPHER T. PHILLIPS, 033796. THIS MEDIA SHALL NOT BE CONSIDERED A CERTIFIED DOCUMENT.

THIS DOCUMENT ORIGINALLY ISSUED FOR CONSTRUCTION AND SEALED BY RONALD L. TAYLOR, SEAL NO. 024649

HAZEN AND SAWYER
Environmental Engineers & Scientists
4011 WestChase Blvd, Raleigh, North Carolina 27607

CITY OF ROANOKE
VIRGINIA

REGIONAL WATER POLLUTION CONTROL PLANT
PROCESS TRAIN IMPROVEMENTS

MAINTENANCE BUILDING MODIFICATIONS
STRUCTURAL
ROOF PLAN

THE SCALE BAR SHOWN BELOW MEASURES ONE INCH LONG ON THE ORIGINAL DRAWING.	DATE	JANUARY 2004
	H & S JOB NUMBER	30788C
	CONTRACT NUMBER	C
	DRAWING NUMBER	S962