

DETAIL	14
3/4"=1'-0"	S963

CL. COL.

3 1/2' TYP

1/4'

W12 COLUMN

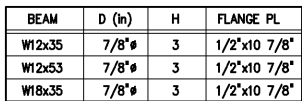
1/2"x14"x14" BASE PLATE
CENTERED ON COLUMN

4-7/8" HEADED A36 ANCHOR BOLTS
WITH 12" EMBEDMENT AND 4" PROJECTION

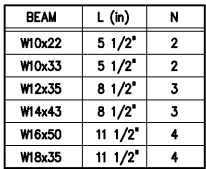
DETAIL

	17
3/4"x1'-0"	S966

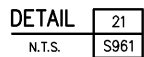
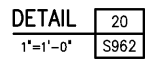
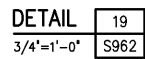
NOTE:
PROVIDE 1" NONSHRINK GROUT BENEATH
BOTTOM OF BASE PLATE



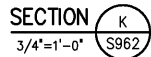
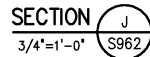
DETAIL	15
3/4"=1'-0"	S963



DETAIL	16
3/4"=1'-0"	S963



DETAIL	22
3/4"=1'-0"	S962



THIS DOCUMENT ORIGINALLY ISSUED
FOR CONSTRUCTION AND SEALED BY
RONALD L. TAYLOR, SEAL NO. 024649

THIS DRAWING HAS BEEN MODIFIED TO REFLECT FIELD CHANGES REPORTED BY THE CONTRACTOR OR ANOTHER PARTY, BUT NOT VERIFIED BY THE CERTIFYING ENGINEER. THIS DOCUMENT ORIGINALLY ISSUED AND SEALED BY CHRISTOPHER T. PHILLIPS, 033796. THIS MEDIA SHALL NOT BE CONSIDERED A CERTIFIED DOCUMENT.

REGIONAL WATER POLLUTION CONTROL PLANT PROCESS TRAIN IMPROVEMENTS

THE SCALE BAR SHOWN BELOW MEASURES ONE INCH LONG ON THE ORIGINAL DRAWING.	DATE JANUARY 2004	
	H & S JOB NUMBER 30788C	
	CONTRACT NUMBER C	DRAWING NUMBER S966