

STEEL, IRON PIPE, OR CONDUIT WITH INSUL

FIRESTOP SEALANT

CONC BLOCK WALL

CONC BLOCK WALL

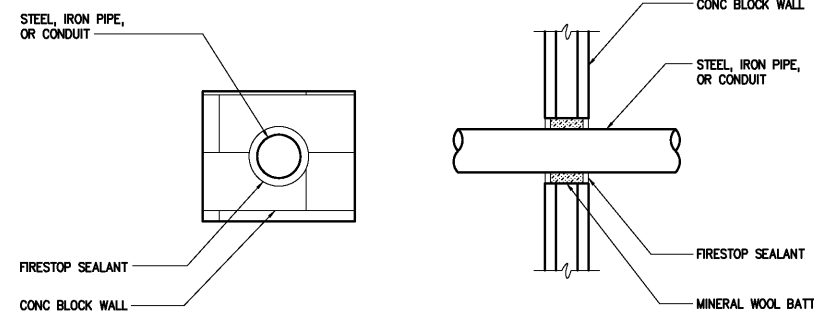
MINERAL WOOL BATT

FIRESTOP SEALANT

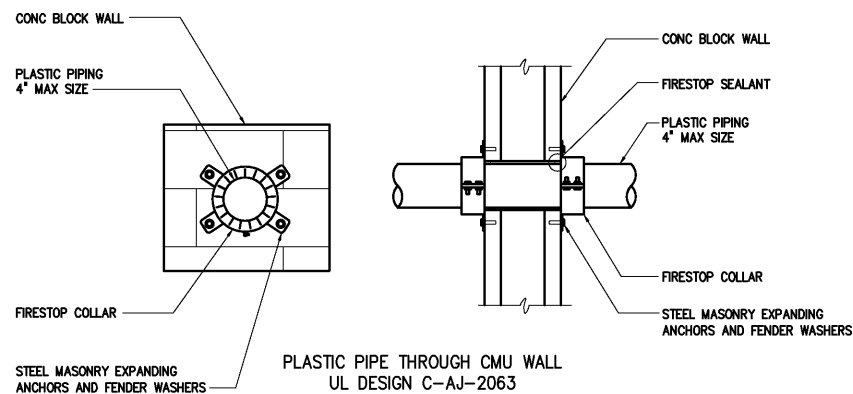
STEEL, IRON PIPE, OR CONDUIT WITH INSUL

WRAPSTRIP

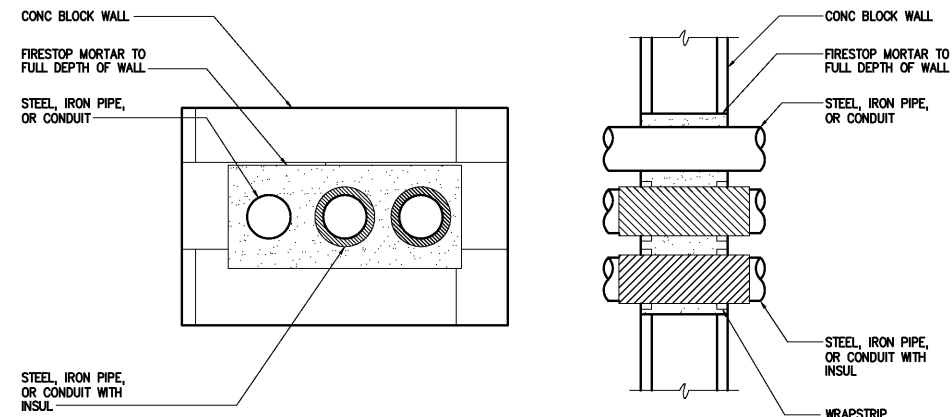
INSULATED METALLIC PIPE THROUGH CMU WALL  
UL DESIGNS C-AJ-5051 OR C-AJ-5042



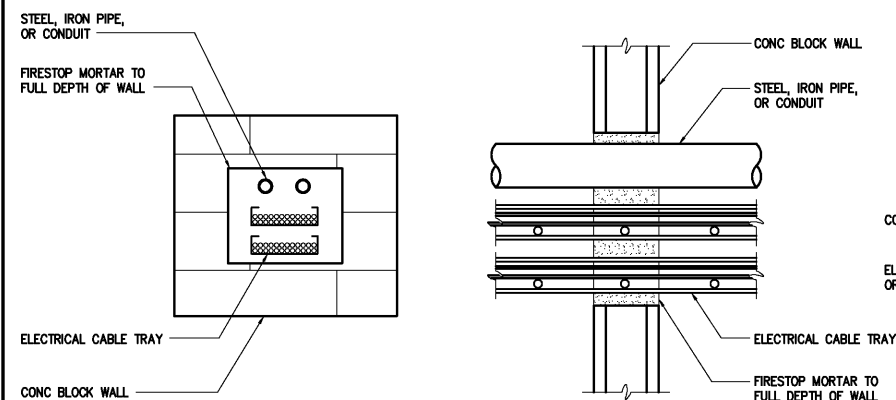
METALLIC PIPE THROUGH CMU WALL  
UL DESIGN C-AJ-1079



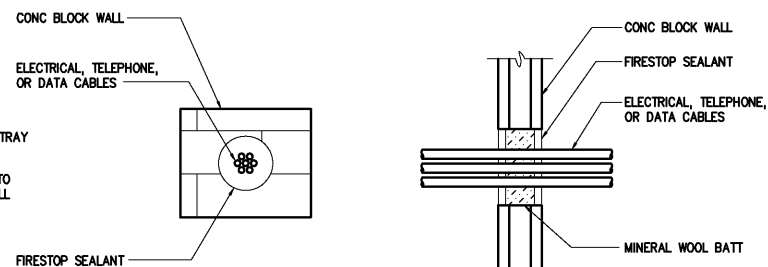
PLASTIC PIPE THROUGH CMU WALL  
UL DESIGN C-AJ-2063



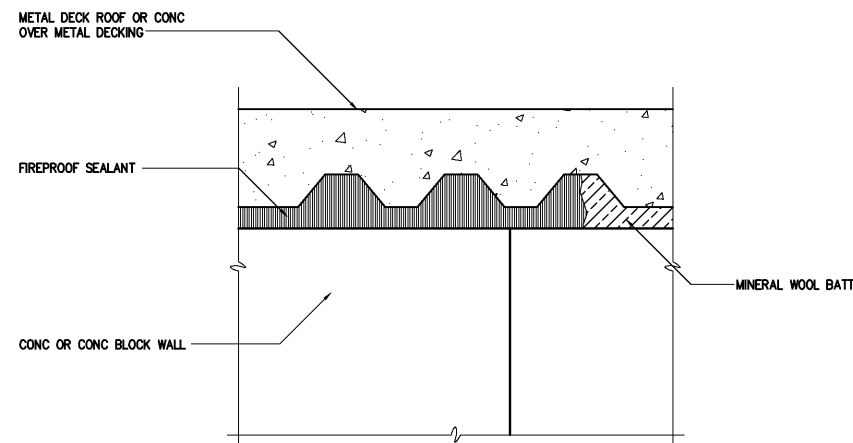
MULTIPLE PIPES THROUGH CMU OR CONC WALL  
UL DESIGN C-AJ-8033



MULTIPLE PIPE / CABLE TRAY THROUGH CMU WALL  
UL DESIGN C-AJ-8016

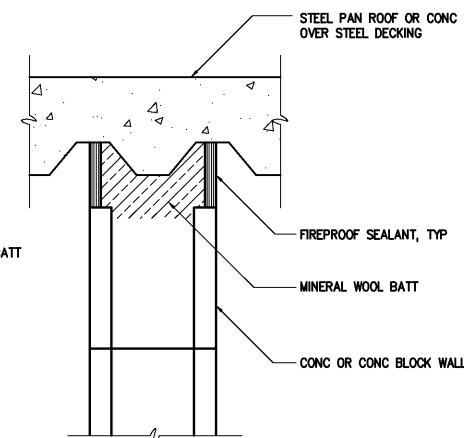


# ELECTRICAL CABLES THROUGH CMU WALL UL DESIGN C-AJ-3042



### PERPENDICULAR CONDITION

1, 2, 3, OR 4 HOUR RATED FIRESTOP FOR HEAD OF WALL  
UL DESIGN C-AJ-0014, HWD-1001, J900Z010 & U900Z020



### PARALLEL CONDITION

THIS DOCUMENT ORIGINALLY ISSUED  
FOR CONSTRUCTION AND SEALED BY  
ROBERT S. DIFIORE, SEAL NO. 22769

THIS DRAWING HAS BEEN MODIFIED TO REFLECT FIELD CHANGES REPORTED BY THE CONTRACTOR OR ANOTHER PARTY, BUT NOT VERIFIED BY THE CERTIFYING ENGINEER. THIS DOCUMENT ORIGINALLY ISSUED AND SEALED BY WILLIAM H. RUSSELL, SEAL NUMBER 008532. THIS MEDIA SHALL NOT BE CONSIDERED A CERTIFIED DOCUMENT.


THIS DOCUMENT ORIGINALLY ISSUED  
FOR CONSTRUCTION AND SEALED BY  
RONALD L. TAYLOR, SEAL NO. 024649

**HAZEN AND SAWYER**  
Environmental Engineers & Scientists  
4011 WestChase Blvd, Raleigh, North Carolina 27607

CITY OF ROANOKE  
VIRGINIA

## REGIONAL WATER POLLUTION CONTROL PLANT PROCESS TRAIN IMPROVEMENTS

## ARCHITECTURAL FIRESTOPPING DETAILS

THE SCALE BAR SHOWN BELOW MEASURES ONE INCH LONG ON THE ORIGINAL DRAWING. 	DATE JANUARY 2004	
	H & S JOB NUMBER 30788C	
	CONTRACT NUMBER C	DRAWING NUMBER A7