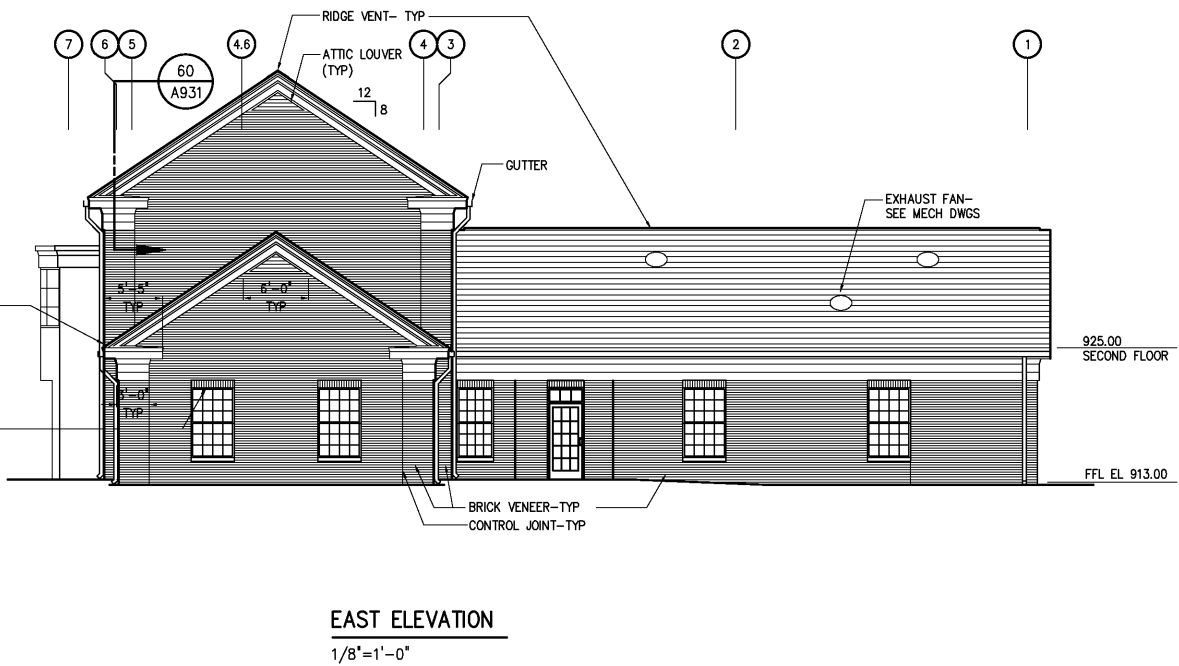
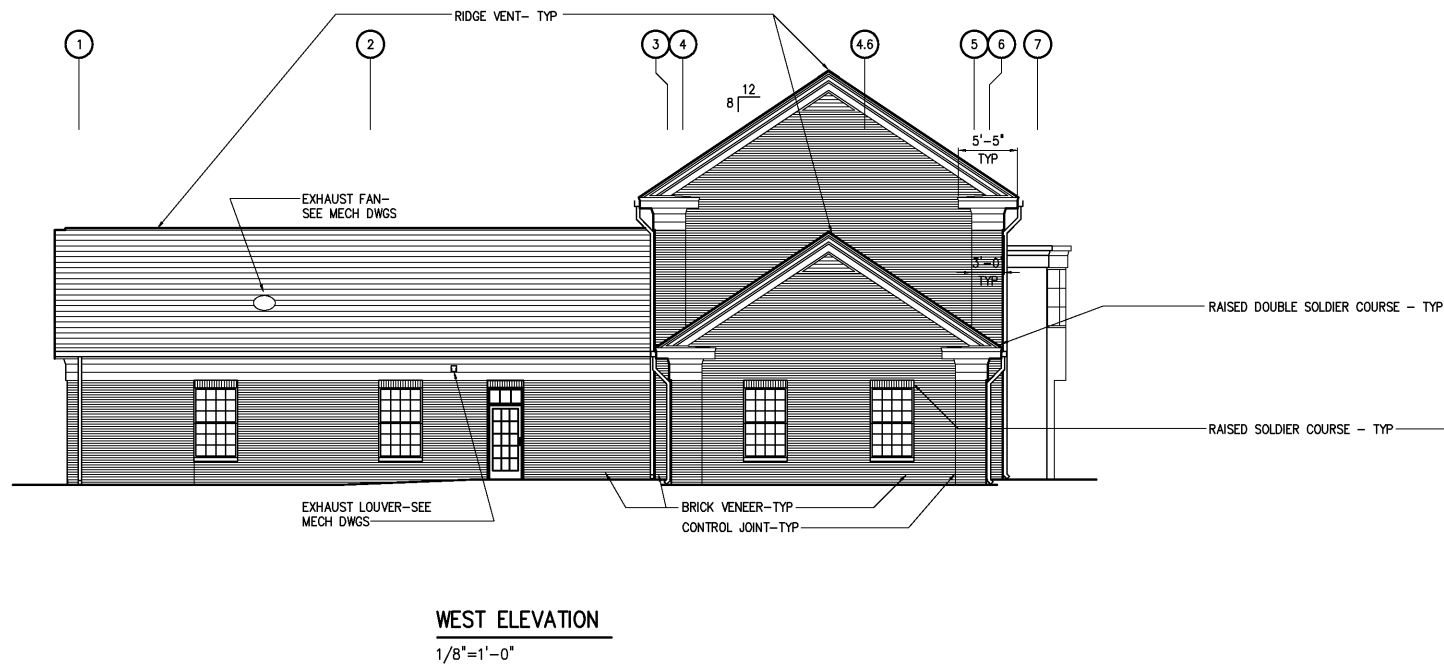
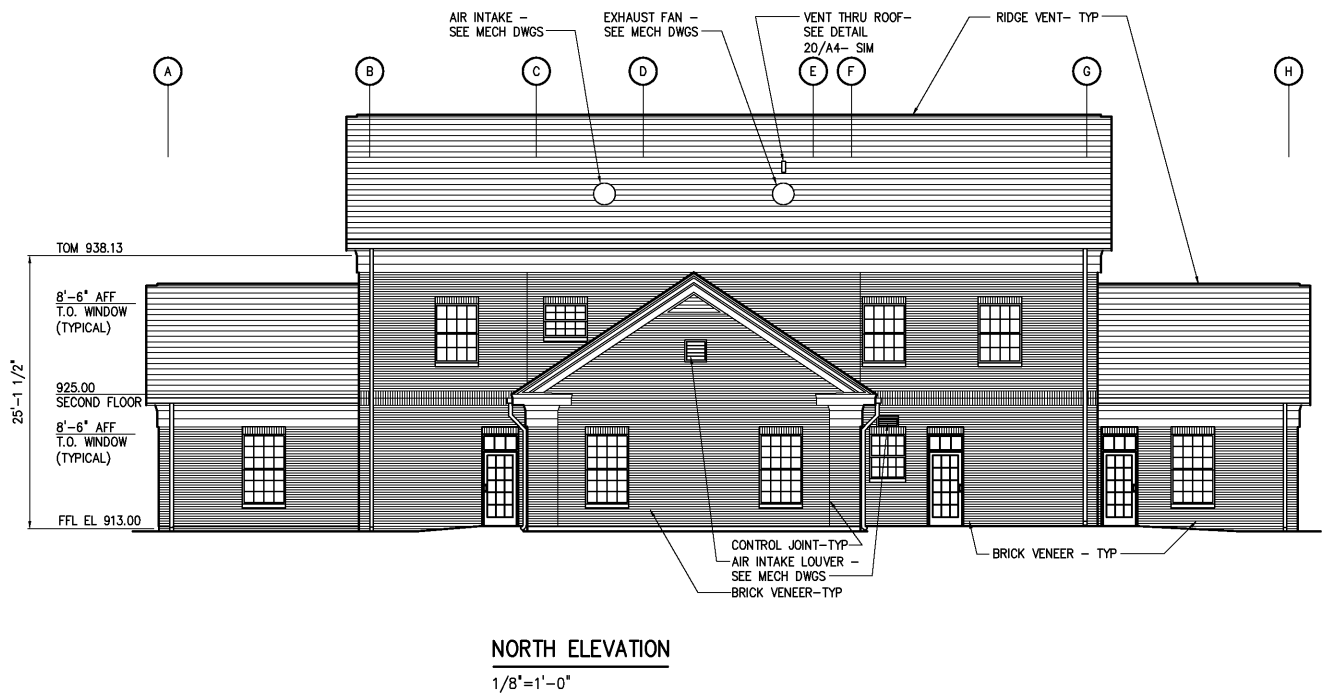
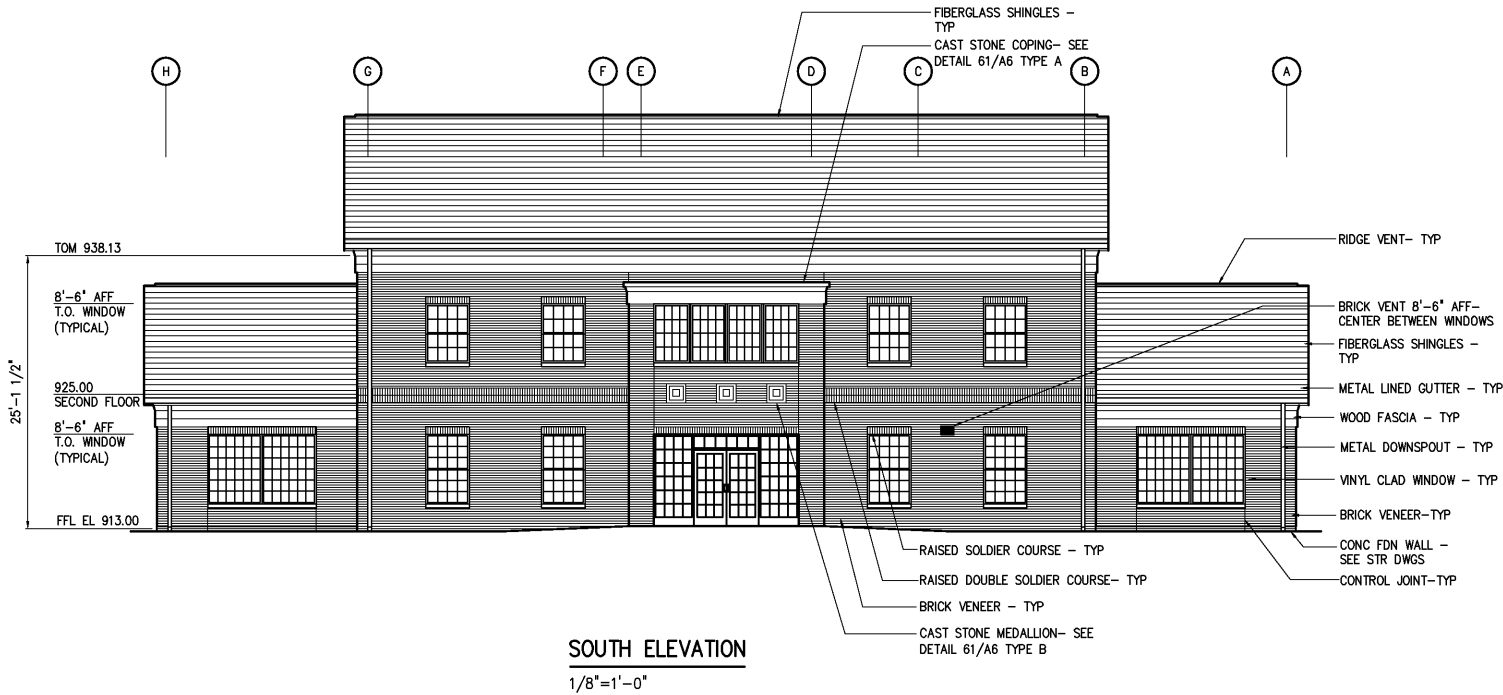


NOTES:
1. PROVIDE CONCRETE SPLASHBLOCK AT ALL DOWNSPOUTS



DESIGNED	WHR
DRAWN	ALB
CHECKED	
PROJ. ENGR.	DAN
APPROVED	
NO.	
3	RECORD DRAWING
2	CONSTRUCTION
1	REGULATORY APPROVAL
NO.	ISSUED FOR
DATE	BY
JAN 2006	RLT
JAN 2004	RLT
NOV 2003	RLT

THIS DOCUMENT ORIGINALLY ISSUED FOR CONSTRUCTION AND SEALED BY ROBERT S. DIFIORE, SEAL NO. 22769

THIS DOCUMENT ORIGINALLY ISSUED FOR CONSTRUCTION AND SEALED BY RONALD L. TAYLOR, SEAL NO. 024649

RECORD DRAWING

THIS DRAWING HAS BEEN MODIFIED TO REFLECT FIELD CHANGES REPORTED BY THE CONTRACTOR OR ANOTHER PARTY, BUT NOT VERIFIED BY THE CERTIFYING ENGINEER. THIS DOCUMENT ORIGINALLY ISSUED AND SEALED BY WILLIAM H. RUSSELL, SEAL NUMBER 008532. THIS MEDIA SHALL NOT BE CONSIDERED A CERTIFIED DOCUMENT.

HAZEN AND SAWYER
Environmental Engineers & Scientists
4011 WestChase Blvd, Raleigh, North Carolina 27607

CITY OF ROANOKE
VIRGINIA

REGIONAL WATER POLLUTION CONTROL PLANT
PROCESS TRAIN IMPROVEMENTS

ADMINISTRATION BUILDING
ARCHITECTURAL
ELEVATIONS AND DETAILS

THE SCALE BAR SHOWN BELOW MEASURES ONE INCH LONG ON THE ORIGINAL DRAWING.	DATE	JANUARY 2004
	H & S JOB NUMBER	30788C
	CONTRACT NUMBER	C
	DRAWING NUMBER	A923